

IEEE P802.15
Wireless Personal Area Networks

Project	IEEE P802.15 Working Group for Wireless Personal Area Networks (WPANs)	
Title	FCSL/PAL - MAC/MLME SAP Proposal	
Date Submitted	[10, September 2004]	
Source	[John Sarallo] [Appairent Technologies] [150 Lucius Gordon Drive, West Henrietta, NY 14586]	Voice: [585-727-2014] Fax: [585-214-2461] E-mail: [sarallo@appairent.com]
Re:	[]	
Abstract	[This document contains a list of proposed changes to IEEE Std 802.15.3.]	
Purpose	[The purpose of this document is to propose changes to IEEE Std 802.15.3 to improve compatibility, performance and clarity in the standard.]	
Notice	This document has been prepared to assist the IEEE P802.15. It is offered as a basis for discussion and is not binding on the contributing individual(s) or organization(s). The material in this document is subject to change in form and content after further study. The contributor(s) reserve(s) the right to add, amend or withdraw material contained herein.	
Release	The contributor acknowledges and accepts that this contribution becomes the property of IEEE and may be made publicly available by P802.15.	

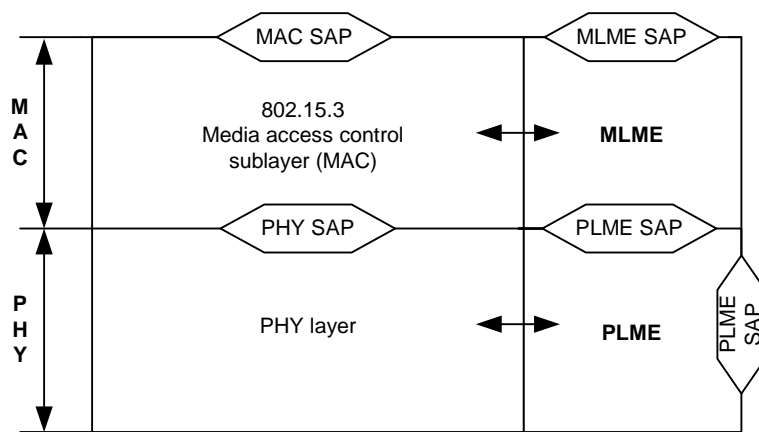
1. Introduction

At the July 2004 802.15.3b meeting in Portland it was determined that MLME SAP defined in IEEE Std 802.15.3-2003 should be modified in consideration to the DME functionality defined in the standard be part of the MLME entity. This allows the MLME SAP to be a defined exposed interface for a FCSL/PAL. This document proposes this new MLME SAP. Because the MLME SAP is to be an exposed interface, the MAC SAP would be assumed to be exposed as well. Therefore, a new more implementable MAC SAP interface is also presented in this document.

2. Standard Reference Model

Because it is being proposed that the DME functionality define in IEEE Std 802.15.3-2003 be considered part of the MLME functionality, the reference model shown in Figure 3 of the standard would no longer be valid. The figure below shows a proposal for a new reference model to be included in Clause 6 (and in Appendix A).

Because the purpose of the standard is to define the MAC, MLME, PHY, and PLME entities and their respective SAPs, references to the FCSL layer and the FCSL SAP have been omitted. This makes the reference model more in line with other MAC standards such as 802.15.4.



Proposed Reference Model (Figure 3)

3. Proposed MLME SAP Primitives

The table in this section proposes MLME primitives, their purpose, and their parameters based on a MLME entity that contains the DME functionality currently define in IEEE Std 802.15.3-2003. This interface would be the SAP for a PAL/FCSL using the 802.15.3 MLME.

Note that the MLME SAP as specified does not inherently support multiple FCSL/PALs at one time (for example, two separate FCSL/PALs requiring piconets with very different superframe durations). It is assumed that an additional coordination and multiplexing layer of some sort will be required above the MAC SAP and MLME SAP to support multiple FCSL/PALs at one time.

The MLME/SAP presented below would be identified in the standard as the minimal required interface to support higher layers.

MLME Primitive	Purpose	New Parameters (Values)
MLME-RESET.request	A request to reset the MAC/MLME.	SetDefaultPIB
MLME-RESET.confirm	After any reset (self initiated or MLME-RESET.request) the MAC/MLME will send a MLME-RESET.confirm to the FCSL/PAL to indicate that it is ready to accept requests.	ResultCode (READY, ERROR) ReasonCode
MLME-SCAN.request	A request to scan all channels for piconets. The FCSL/PAL can optionally supply a BSID, PNID, or PNCAddress to scan for.	ScanForBSID (TRUE, FALSE) BSID ScanForPNID (TRUE, FALSE) PNID ScanForPNCAddress (TRUE, FALSE) PNCAddress
MLME-SCAN.confirm	Report the piconets found as a result of a MLME-SCAN.request. Basic information about each piconet found is returned including any Application Specific Data broadcast by a PNC in the Beacon. <i>Note that Piconet Services are not broadcast in the Beacon and can therefore not be supplied as part of a scan result.</i>	ResultCode (SUCCESS, FAILURE) ReasonCode NumberOfPiconets PiconetDescriptionSet - BSID - PNID - PNCAddress - ChannelIndex - SECMODE - ApplicationSpecificDataSet - VendorOUI - Length - ApplicationSpecificData
MLME-START.request	A request to start operation as a PNC. The FCSL/PAL specifies the BSID, SuperframeDuration, SECMODE, and MaxTXPowerLevel for the piconet.	BSID SuperframeDuration SECMODE (TRUE, FALSE) MaxTXPowerLevel

MLME Primitive	Purpose	New Parameters (Values)
MLME-START.confirm	Report result of the start request. A ResultCode of FAILURE is returned if the MLME can not support the parameters supplied in the MLME-START.request	ResultCode (SUCCESS, FAILURE) ReasonCode DEVID (for DEV identity) DEVAddress (for DEV identity)
MLME-STOP.request	A request to stop operation as a PNC. The FCSL/MAC can specify if the shutdown of the piconet should be immediate or if there is time for an attempt to handover control of PNC operations to another DEV.	RequestType (IMMEDIATE, TIMED) AllowedTime (if RequestType = TIMED)
MLME-STOP.confirm	Report result of the stop request	ResultCode (SUCCESS, FAILURE) ReasonCode
MLME-ASSOCIATE.request	A request to associate with a specific piconet. The MLME will automatically synch with the target piconet before attempting to send an Association Request command. The capabilities of the DEV are implementation specific or are obtained from the PIB. The FCSL/PAL may request the PNC return the available Piconet Services after successful association.	BSID PNID PNCAddress PiconetServicesInquiry (TRUE, FALSE)
MLME-ASSOCIATE.confirm	Report the result of associate request. <i>Note, the Association Response command as currently defined may return a single Vendor IE.</i>	ResultCode (SUCCESS, FAILURE) ReasonCode DEVID DEVAddress VendorOUI Length VendorSpecificInformation
MLME-ASSOCIATE.indication	Report the association of a new DEV in the piconet.	DEVID DEVAddress
MLME-DISASSOCIATE.request	A request to disassociate from the current piconet.	ReasonCode

MLME Primitive	Purpose	New Parameters (Values)
MLME-DISASSOCIATE.indication	Report the disassociation of a DEV from the piconet. It may be this DEV that is now disassociated.	DEVID DEVAddress ReasonCode
MLME-NEW-PNC.indication	Report a change in PNC due to handover event. <i>Note: If this DEV is the new PNC the MLME will send this indication to the FCSL/PAL upon receipt of the first Handover IE in the Beacon. The FCSL/PAL shall recognize that it will be the new PNC FCSL/PAL and shall request the necessary security information from the previous PNC.</i>	BSID PNID PNCAddress SuperframeSize ChannelIndex SECMODE
MLME-DEV-INFO.request	A request for the membership status of one or more DEVs associated with the piconet.	RequestType (SINGLE, ALL) QueriedDEVID
MLME-DEV-INFO.confirm	Result of the request for membership status of one or more DEVs associated with the piconet.	ResultCode (SUCCESS, FAILURE) ReasonCode NumberOfDevs DevInfoSet - DEVID - DEVAddress - MembershipStatus
MLME-DEV-INFO.indication	Report a change in the membership status of one or more DEVs associated with the piconet	NumberOfDevs DevInfoSet - DEVID - DEVAddress - MembershipStatus (ASSOCIATED, MEMBER)
MLME-APPLICATION-SPECIFIC-DATA.request	A request to announce, remove, or modify application specific information. <i>NOTE: A new command is required to support this primitive</i>	RequestType (ADD, REMOVE, MODIFY) ApplicationSpecificID (if RequestType /= ADD) VendorOUI Length ApplicationSpecificData

MLME Primitive	Purpose	New Parameters (Values)
MLME-APPLICATION-SPECIFIC-DATA.confirm	Result of the request to announce, remove, or modify application specific information. <i>NOTE: A new command is required to support this primitive</i>	ResultCode (SUCCESS, FAILURE) ReasonCode ApplicationSpecificID (assigned by PNC)
MLME-APPLICATION-SPECIFIC-DATA.indication	Report a change in application specific information. <i>NOTE: In order for this primitive to only report changes to application specific data, the ApplicationSpecificID would need to be added to the ASIE along with a bit to indicate when the information in the ASIE has changed.</i>	NumberOfData ApplicationSpecificDataSet - VendorOUI - Length - ApplicationSpecificData
MLME-ANNOUNCE-SERVICE.request	A request to announce, remove, or modify the availability of a piconet service provided by this DEV.	RequestType (ADD, REMOVE, MODIFY) ServiceID (if RequestType /= ADD) VendorOUI Length PiconetServicesData
MLME-ANNOUNCE-SERVICE.confirm	The result of the request to announce, remove, or modify the availability of a piconet service provided by this DEV.	ResultCode (SUCCESS, FAILURE) ReasonCode ServiceID (assigned by PNC)
MLME-PICONET-SERVICES.request	Request information about the piconet services offered by the piconet or by a specific DEV.	TrgtID
MLME-PICONET-SERVICES.confirm	Report result of the request for piconet services information.	NumberOfServices PiconetServicesSet - DEVID - VendorOUI - Length - PiconetServicesData

MLME Primitive	Purpose	New Parameters (Values)
MLME-PICONET-SERVICES.indication	<p>Report a change in the piconet services offered by the piconet.</p> <p><i>NOTE: In order for this primitive to only report changes to piconet services, the ServicesID would need to be added to the Piconet Services IE along with a bit to indicate when the information in the Piconet Services IE has changed.</i></p>	<p>NumberOfServices PiconetServicesSet</p> <ul style="list-style-type: none"> - DEVID - VendorOUI - Length - PiconetServicesData
MLME-VENDOR-SPECIFIC.request	<p>Request to send vendor specific information to another device in the piconet as either an Information Element or as a Command.</p>	<p>RequestType (INFORMATION, COMMAND) ElementId (RequestType = INFORMATION) CommandType (RequestType = COMMAND) TrgtId VendorOUI Length VendorSpecificData</p>
MLME-VENDOR-SPECIFIC.confirm	<p>The result of the request to send vendor specific information to another device in the piconet.</p> <p><i>Note: If an Vendor Specific command is generated from the MLME-VENDOR-SPECIFIC.request, then this confirm can only indicate that the command was transmitted and not that a cooresponding Response command was received.</i></p>	<p>ResultCode (SUCCESS, FAILURE) ReasonCode</p>
MLME-VENDOR-SPECIFIC.indication	<p>Report the reception of vendor specific information.</p> <p><i>Note: This indication would be generated any time a VendorSpecifc IE or VendorSpecific command was received.</i></p>	<p>IndicationType (INFORMATION, COMMAND) ElementId (IndicationType = INFORMATION) CommandType (IndicationType = COMMAND) OrigID VendorOUI Length VendorSpecificData</p>

MLME Primitive	Purpose	New Parameters (Values)
MLME-CREATE-STREAM.request	<p>A request to create an an isochronous stream from the requesting DEV to another DEV in the piconet.</p> <p><i>Note: There is a question about whether the FCSL/PAL should supply the default number of retries per frame (NumRetries), or if the MLME should determine the proper number of retries depending on the value of MaxDroppedFrames. Note also that it is being proposed that the NumRetries value can be modified with each MAC-xxx-DATA.request.</i></p>	StreamRequestID TrgtID DSPSSetIndex ACKPolicy NumRetries UserPriority PMCTRqType MaxThroughput (MSDU payload in Kbytes per second) MaxFrameSize (Maximum MSDU payload in bytes) MaxLatency (msec) MaxJitter (msec) MaxDroppedFrames (% if ACKPolicy = Imm-ACK)
MLME-CREATE-STREAM.confirm	The result of the request to create an an isochronous stream from the requesting DEV to another DEV in the piconet.	ResultCode (SUCCESS, FAILURE) ReasonCode StreamRequestID StreamIndex MaxThroughput (MSDU payload in Kbytes per second) MaxLatency (msec) MaxJitter (msec)
MLME-CREATE-STREAM.indication	An indication to a DEV that it is the destination of an isochronous stream.	StreamIndex, OrigID
MLME-MODIFY-STREAM.request	A request to modify an an isochronous stream from the requesting DEV to another DEV in the piconet	StreamIndex UserPriority PMCTRqType DSPSSetIndex ACKPolicy NumRetries MaxThroughput (MSDU payload in Kbytes per second) MaxFrameSize (Maximum MSDU payload in bytes) MaxLatency (msec) MaxJitter (msec) MaxDroppedFrames (% if ACKPolicy = Imm-ACK)

MLME Primitive	Purpose	New Parameters (Values)
MLME-MODIFY-STREAM.confirm	The result of the request to modify an an isochronous stream from the requesting DEV to another DEV in the piconet	ResultCode (SUCCESS, FAILURE) ReasonCode StreamIndex MaxThroughput (MSDU payload in Kbytes per second) MaxLatency (msec) MaxJitter (msec)
MLME-MODIFY-STREAM.indication	An indication to the originator of an isochronous stream of a change in the quality parameters for the stream	StreamIndex MaxThroughput (MSDU payload in Kbytes per second) MaxFrameSize (Maximum MSDU payload in bytes) MaxLatency (msec) MaxJitter (msec)
MLME-TERMINATE-STREAM.request	A request by either the originator or the target of an isochronous stream to terminate the stream	StreamIndex
MLME-TERMINATE-STREAM.confirm	The result of the request by either the originator or the target of an isochronous stream to terminate the stream	ResultCode (SUCCESS, FAILURE) ReasonCode StreamIndex
MLME-TERMINATE-STREAM.indication	An indication that an isochronous stream has been terminated. If received by the originator it is an indication that the stream was terminated by the target DEV for the stream or the PNC. If received by the target it is an indication that the stream was terminated by the source DEVID for the stream or terminated by the PNC. <i>Note: In order to provide a reason code with this primitive, the definition of a Null CTA must be modified to pass a reason code.</i>	StreamIndex ReasonCode
MLME-STREAM-STATUS.request	A request by the originator of an isochrohous stream for a measurment of the quality parameters for the stream.	StreamIndex

MLME Primitive	Purpose	New Parameters (Values)
MLME-STREAM-STATUS.confirm	The result of a request by the originator of an isochronous stream for a measurement of the quality parameters for the stream.	ResultCode (SUCCESS, FAILURE) ReasonCode StreamIndex MeasurementWindowSize MeasuredThroughput (Bps) MeasuredLatency (msec) MeasuredJitter (msec) MeasuredDroppedFrames (if ACKPolicy = Imm-ACK)
MLME-PICONET-PARM-CHANGE.request	A request by a DEV currently acting as PNC to change the BSID, Superframe Size, or Max TX Power Level for the piconet.	ChangeType (BSID, SIZE, POWER) BSID SuperframeDuration MaxTXPowerLevel
MLME-PICONET-PARM-CHANGE.confirm	The result of the request by a DEV currently acting as PNC to change the BSID, Superframe Size, or Max TX Power Level for the piconet.	ResultCode (SUCCESS, FAILURE) ReasonCode
MLME-PICONET-PARM-CHANGE.indication	An indication to a DEV not acting as a PNC that the BSID, Superframe Size, or Max TX Power Level of the piconet has changed.	ChangeType (PNID, BSID, SIZE, POWER, CHANNEL) PNID (ChangeType = PNID) BSID (ChangeType = BSID) SuperframeDuration (ChangeType = SIZE) MaxTXPowerLevel (ChangeType = POWER) ChannelIndex (ChangeType = CHANNEL)
MLME-BEACON-EVENT.request	Request activation of the MAC synchronization support facility	RequestType (START, STOP)
MLME-BEACON-EVENT.confirm	Report result of request to activate the MAC synchronization support facility	ResultCode (SUCCESS, FAILURE) ReasonCode
MLME-BEACON-EVENT.indication	Report beginning of Beacon PHY preamble	TimeSinceBeaconStart

MLME Primitive	Purpose	New Parameters (Values)
MLME-MEMBERSHIP-UPDATE.request	A request that the membership status, SECID and keying information associated with a security relationship be included or updated.	TrgtID MembershipStatus SECID KeyType KeyOriginator KeyInfoLength KeyInfo
MLME-SECURITY-MESSAGE.request	A request to send security related information to another DEV in the piconet.	TrgtID VendorOUI Length SecurityMessage
MLME-SECURITY-MESSAGE.indication	Report security related information received from another DEV in the piconet.	OrigID VendorOUI Length SecurityMessage
MLME-SECURITY-ERROR.indication	Report failed security operation	ReceivedMACHeader ReceivedPayloadLength ReceivedFramePayload ReasonCode
MLME-SECURITY-INFO.request	A request for security information regarding either a single DEV or all of the DEVs in the piconet.	TrgtID QueriedDEVID
MLME-SECURITY-INFO.indication	Indicates the reception of a request by a DEV for security information it manages regarding either a specific DEV or all of the DEVs in the piconet.	OrigID QueriedDEVID
MLME-SECURITY-INFO.response	A response to the reception of a request by a DEV for security information it manages regarding either a specific DEV or all of the DEVs in the piconet.	OrigID NumSecurityRecordSet SecurityRecordSet - DEVAddress - DEVID - VerificationInfoLength - VerificationInfo

MLME Primitive	Purpose	New Parameters (Values)
MLME-SECURITY-INFO.confirm	An indication of the receipt of security information.	ResultCode (SUCCESS, FAILURE) ReasonCode TrgtID NumSecurityRecordSet SecurityRecordSet <ul style="list-style-type: none"> - DEVAddress - DEVID - VerificationInfoLength - VerificationInfo
MLME-MULTICAST-INFORMATION.request	Request information about existing Multicast groups.	<none>
MLME-MULTICAST-INFORMATION.confirm	Result of request for information about existing Multicast groups.	ResultCode (SUCCESS, FAILURE) ReasonCode MaxSupportedMulticastGroups NumCurrentMulticastGroups MulticastGroupSet <ul style="list-style-type: none"> - MulticastGroupID - MembersSet - DEVID
MLME-MULTICAST-GROUP.request	Request to create, join, or leave a Multicast group.	Operation (JOIN, LEAVE) MulticastGroupID (0xFE for CREATE)
MLME-MULTICAST-GROUP.confirm	Result of request to create, join, or leave a Multicast group.	ResultCode (SUCCESS, FAILURE) ReasonCode Operation MulticastGroupID (assigned by PNC)
MLME-PS-SET-INFORMATION.request	A request for the power save set information from the PNC.	<none>

MLME Primitive	Purpose	New Parameters (Values)
MLME-PS-SET- INFORMATION.confirm	Result of the request for the power save set information from the PNC.	ResultCode (SUCCESS, FAILURE) ReasonCode MaxSupportedPSSets NumCurrentPSSets PSSetStructureSet - PSSetIndex - WakeInterval - MembersSet - DEVID
MLME-SPS- CONFIGURE.request	Request to create, join, or leave a power save group.	OperationType (JOIN, LEAVE) SPSSetIndex (0xFE for CREATE) WakeInterval
MLME-SPS- CONFIGURE.confirm	Result of the request to create, join, or leave a power save group.	ResultCode (SUCCESS, FAILURE) ReasonCode OperationType (JOIN, LEAVE) SPSSetIndex WakeInterval
MLME-PM-MODE- CHANGE.request	A request to change the current power save mode.	PMMode
MLME-PM-MODE- CHANGE.confirm	Result of the request to change the current power save mode.	ResultCode (SUCCESS, FAILURE) ReasonCode PMMode
MLME-PM-MODE- CHANGE.indication	Report an unrequest change to the current power save mode.	PMMode PMActiveEvent (if PMMode = ACTIVE)
MLME-MONITOR-PM- MODE.request	Request to enable or disable the monitoring of the power save mode of another DEV in the piconet.	OperationType (ENABLE, DISABLE) TrgtID
MLME-MONITOR-PM- MODE.confirm	The result of the request to enable or disable the monitoring of the power save mode of another DEV in the piconet.	ResultCode (SUCCESS, FAILURE) ReasonCode OperationType (ENABLE, DISABLE) TrgtID PMMode (of TrgtID)

MLME Primitive	Purpose	New Parameters (Values)
MLME-MONITOR-PM-MODE.indication	Report a change in the power save mode of a DEV in the piconet that is currently being monitored.	TrgtID PMMode (of TrgtID)

4. MLMEs Removed or Renamed

This section lists the MLME primitives that are no longer required due to the fact that DME functionality is contained in the MLME entity.

4.1 MLME-START-DEPENDENT

If the MLME receives a request to start a piconet an attempt to start a dependent piconet will automatically be started if there are no open channels for a new piconet.

4.2 MLME-SYNCH

If the MLME receives a request to associate with a piconet, the MLME will automatically synch with the target piconet before attempting an association.

4.3 MLME-ATP-EXPIRED

The MLME will maintain an ATP timer required by the standard. If the ATP timer expires, the MLME will notify the FCSL/PAL with a MLME-DISASSOCIATE.indication. The ReasonCode will indicate that the reason for the disassociation was that the ATP timer expired.

4.4 MLME-DEV-ASSOCIATION-INFO (replaced with MLME-DEV-INFO)

The new MLME-DEV-INFO.confirm primitive will be used to report info requested by the FCSL/PAL about one or all DEVs in the piconet. The new MLME-DEV-INFO.indication primitive will report unsolicited information about one or all DEVs in the piconet to the FCSL/PAL.

4.5 MLME-REQUEST-KEY

Key origination is done in the MAC/MLME.

4.6 MLME-DISTRIBUTE-KEY

Key origination is done in the MAC/MLME.

4.7 MLME-PNC-HANDOVER

Handover of PNC operations will be initiated by the MLME itself.

4.8 MLME-PNC-INFO

The new MLME-DEV-INFO.request primitive is now used to request information about one or all DEVs in the piconet.

4.9 MLME-PROBE

Probe commands are issued by the MLME as needed.

4.10 MLME-ANNOUNCE

Announce commands are issued by the MLME as needed.

4.11 MLME-MULTICAST-RX-SETUP

The new primitives MLME-MULTICAST-INFORMATION and MLME-MULTICAST-GROUP are now used to inquiry about and configure multicast groups respectively.

4.12 MLME-CHANNEL-STATUS

The FCSL/PAL needs to know the overall quality of a stream due to many factors and not just the current status of the channel. The new primitive MLME-STREAM-QOS-STATUS replaces this primitive. The MLME may still issue Channel Status commands.

4.13 MLME-REMOTE-SCAN

The MAC/ MLME independently issues a Remote Scan Request command to other devices in the piconet as needed for interference mitigation.

4.14 MLME-TX-POWER-CHANGE

The MLME independently issues a TX Power Change Request command to other devices it is communicating with to increase QOS.

4.15 MLME-PM-MODE-ACTIVE

Replaced by MLME-PM-MODE-CHANGE.indication.

5. Proposed MAC SAP Primitives

The table in this section proposes MAC primitives, their purpose. This interface would be the SAP for a PAL/FCSL using the 802.15.3 MAC.

Note that the MAC SAP as specified does not inherently support multiple FCSSL/PALs at one time. It is assumed that an additional coordination and multiplexing layer of some sort will be required above the MAC SAP (and MLME SAP) to support multiple FCSSL/PALs at one time.

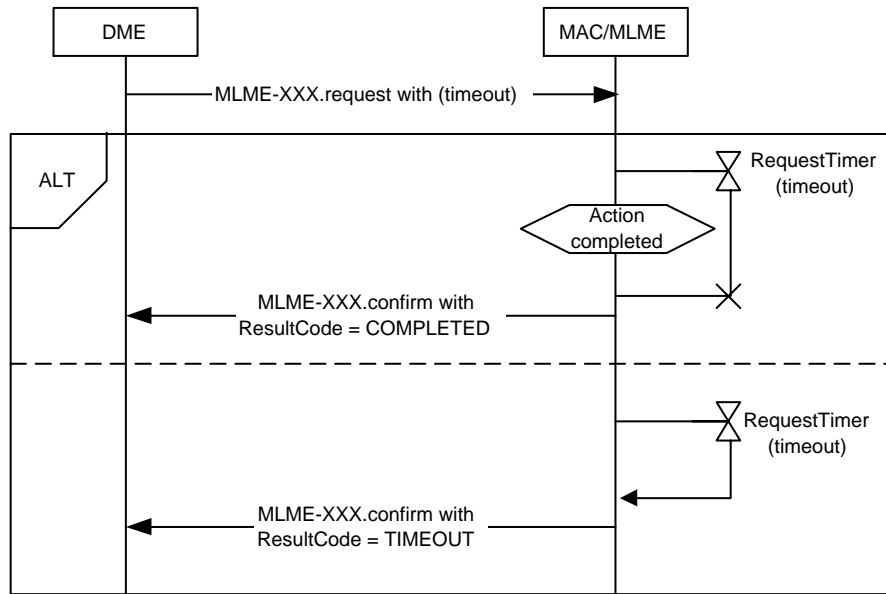
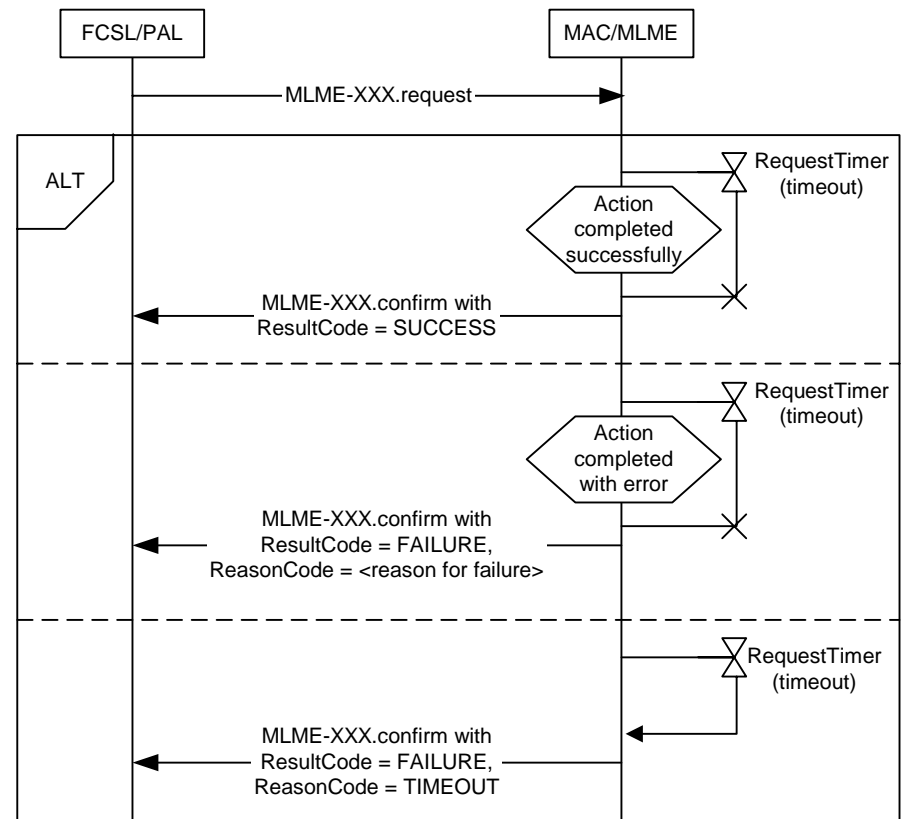
The MAC SAP presented below would be identified in the standard as the minimal required interface to support higher layers.

MAC Primitive	Purpose	New Parameters (Values)
MLME-ASYNC-DATA.request	Request the transfer asynchronous data to another DEV.	RequestID (to support concurrent requests) TrgtID UserPriority ACKPolicy TransmissionTimeout NumRetires (allows per frame control) SECMODE (TRUE, FALSE) ConfirmRequested (TRUE, FALSE) Length Data
MLME-ASYNC-DATA.confirm	Result of request to transfer asynchronous data to another DEV (only generated if confirmation was requested).	ResultCode (SUCCESS, FAILURE) ReasonCode RequestID
MLME-ASYNC-DATA.indication	Report the reception of asynchronous data from another DEV.	OrigID SECMODE (TRUE, FALSE) Length Data
MLME-ISOCH-DATA.request	Request the transfer isochronous data associated with a specific stream to another DEV.	RequestID (to support concurrent requests) StreamIndex TrgtID ACKPolicy TransmissionTimeout NumRetries (allows per frame control) SECMODE (TRUE, FALSE) ConfirmRequested (TRUE, FALSE) Length Data
MLME-ISOCH-DATA.confirm	Result of request to transfer isochronous data associated with a specific stream to another DEV (only generated if confirmation was requested).	ResultCode (SUCCESS, FAILURE) ReasonCode RequestID StreamIndex

MAC Primitive	Purpose	New Parameters (Values)
MLME-ISOCH-DATA.indication	Report the reception of isochronous data associated with a specific stream data from another DEV.	StreamIndex OrigID SECMODE (TRUE, FALSE) Length Data

6. Impact on MSCs

This section provides suggested new MSCs for those MSCs that currently exist in the standard. The suggested MSCs assume the MAC/MLME SAPs defined in this document.

Current**Figure 91 - MSC showing examples of primitive timers****Suggested****Figure 91 - MSC showing the possible results of a primitive request**

Current

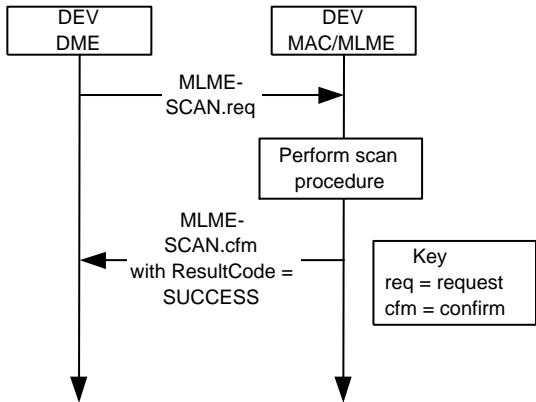


Figure 92 -MSC for scan operation

Suggested

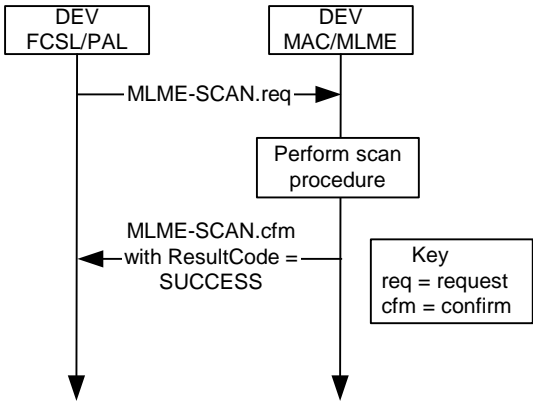


Figure 92 -MSC for scan operation

Current

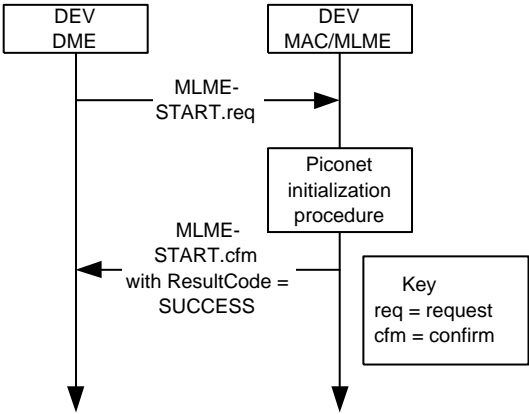


Figure 93 - MSC for starting a piconet

Suggested

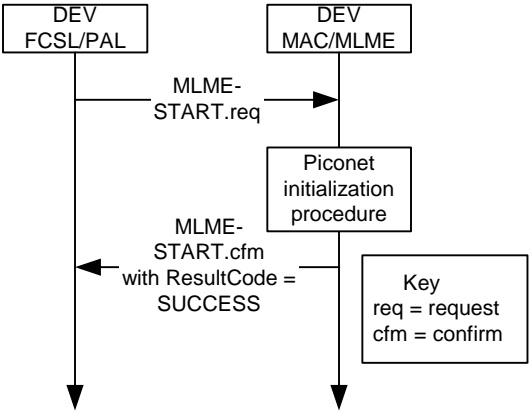
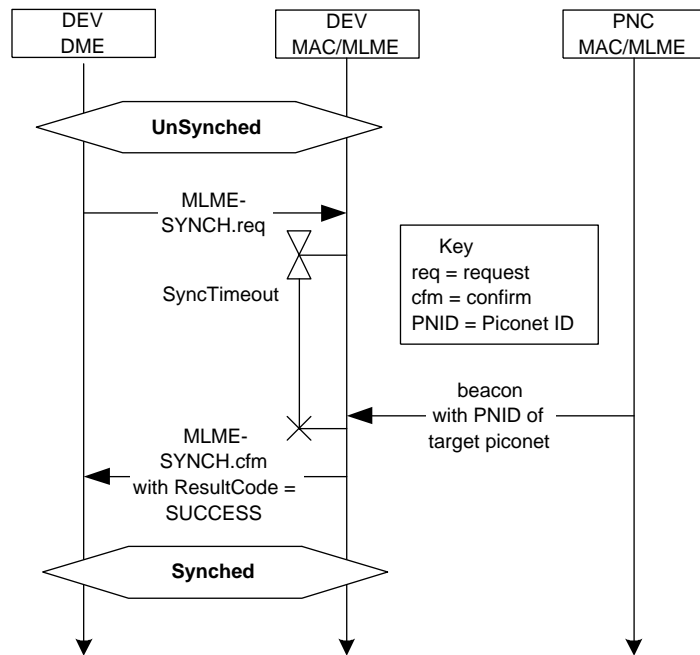


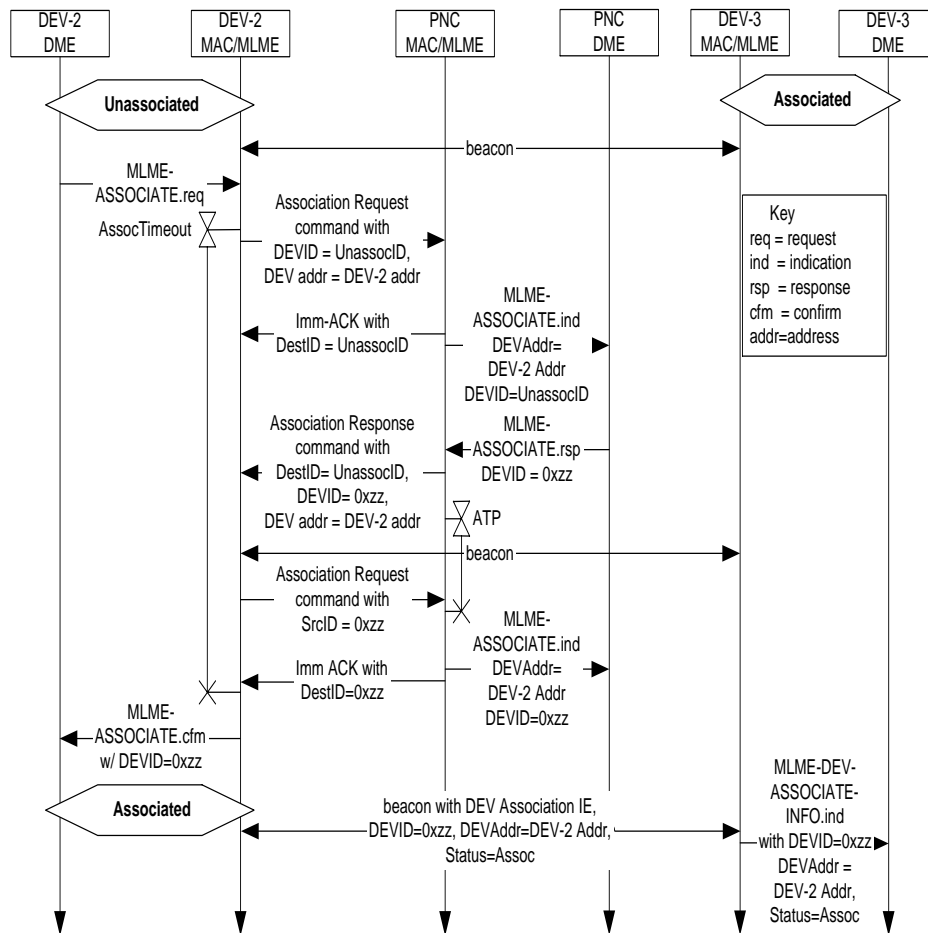
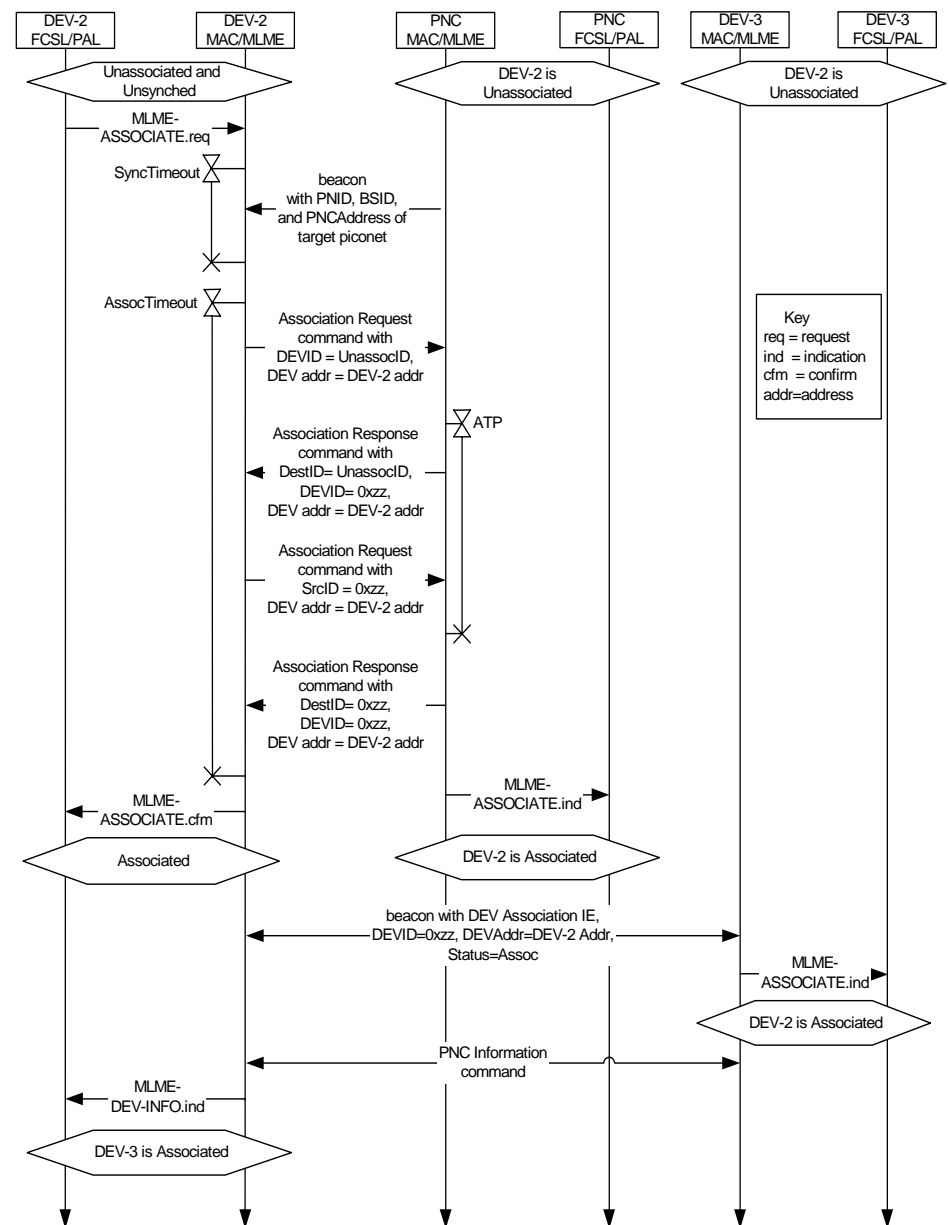
Figure 93 - MSC for starting a piconet

Current**Figure 125 - MSC of a DEV synchronizing with a PNC****Suggested**

REMOVED

Figure 125 - MSC of a DEV synchronizing with a PNC

- Synching now part of the association process.

Current**Figure 102 - MSC of DEV-2 associating****Suggested****Figure 102 - MSC of DEV-2 associating**

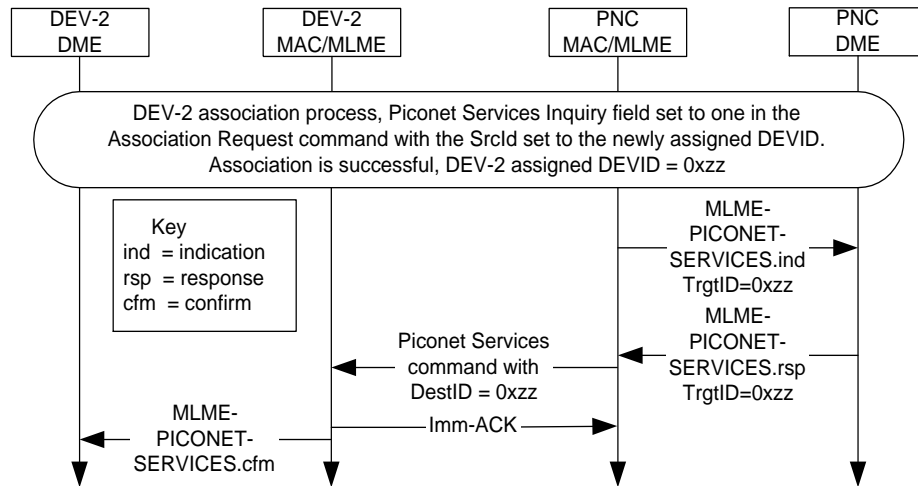
Current

Figure 103 - PNC sending the Piconet Services command to a newly associated DEV in response to a request in the association process

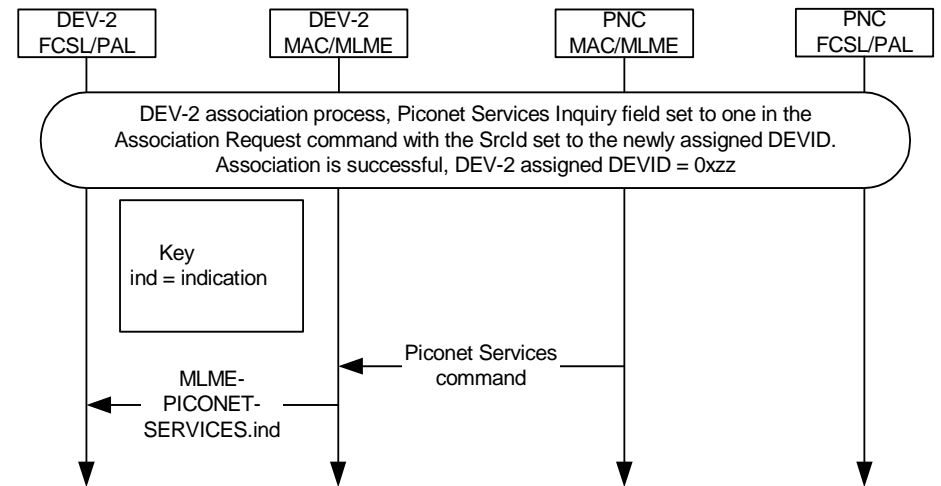
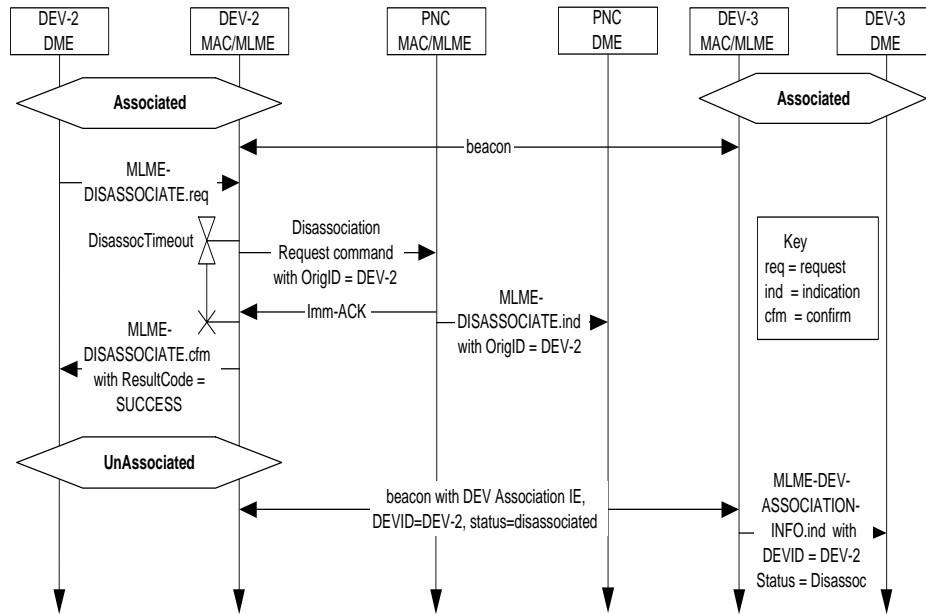
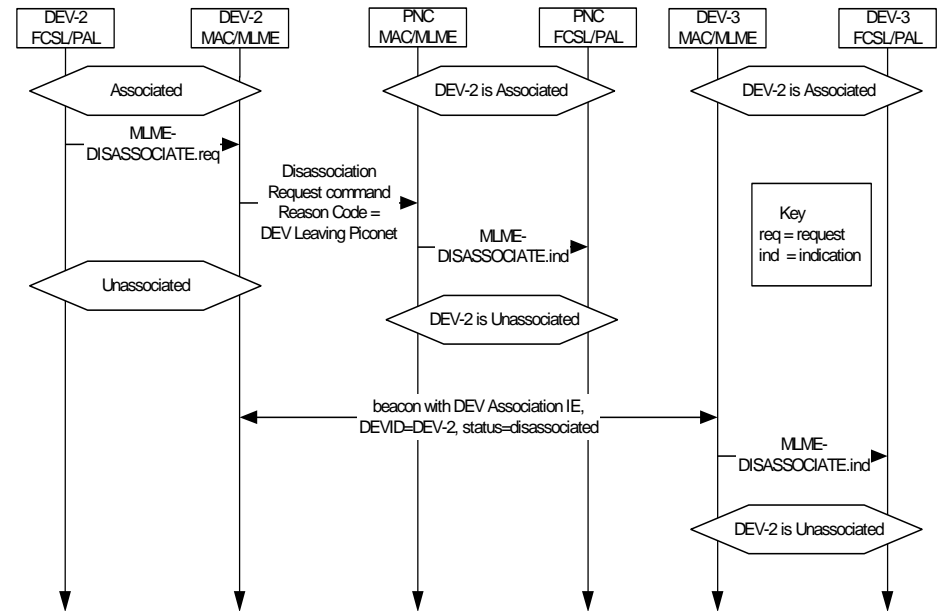
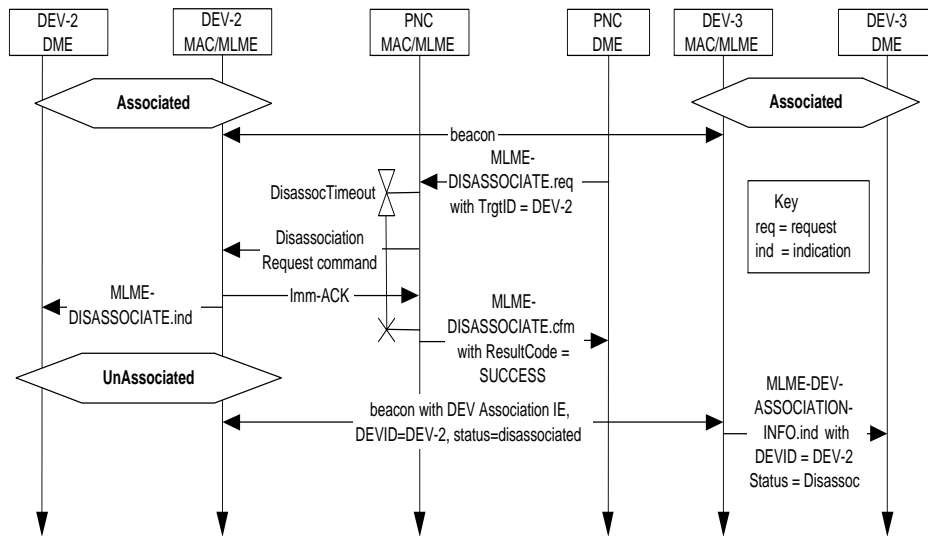
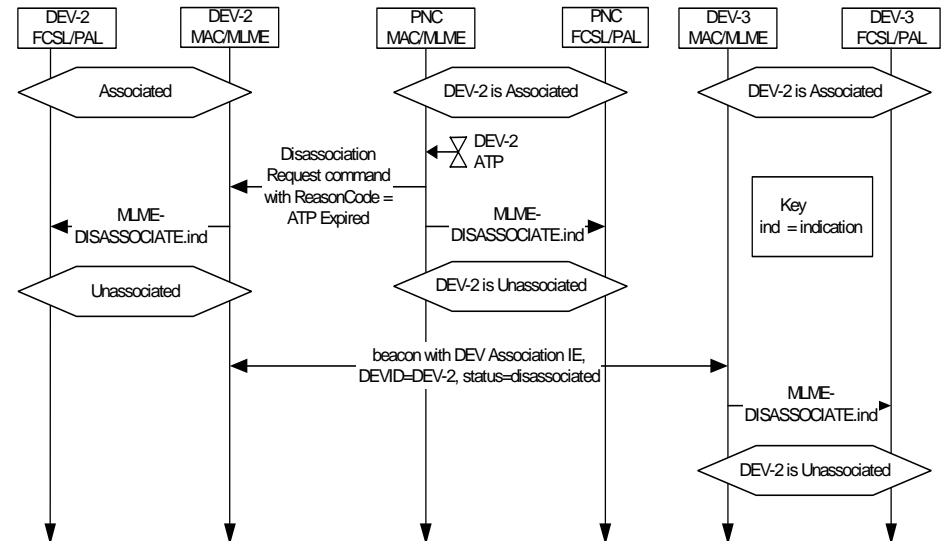
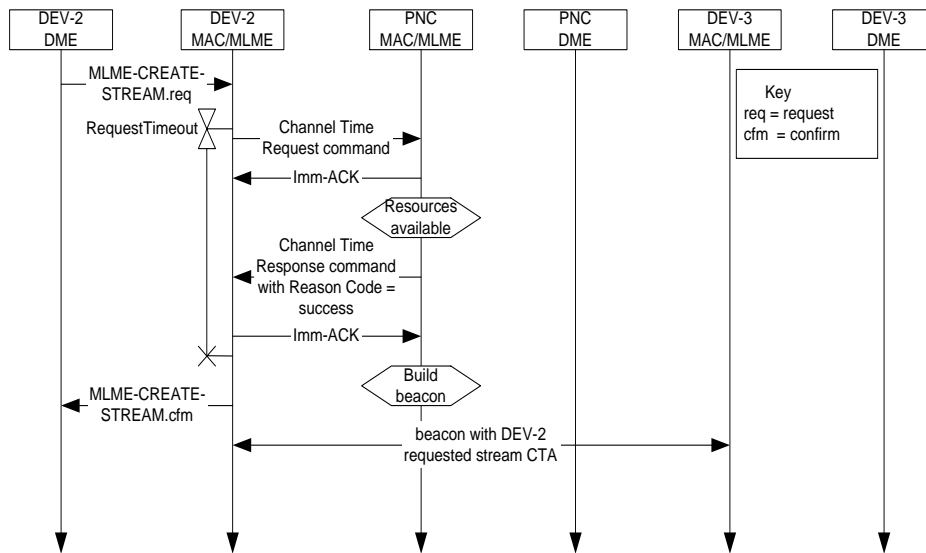
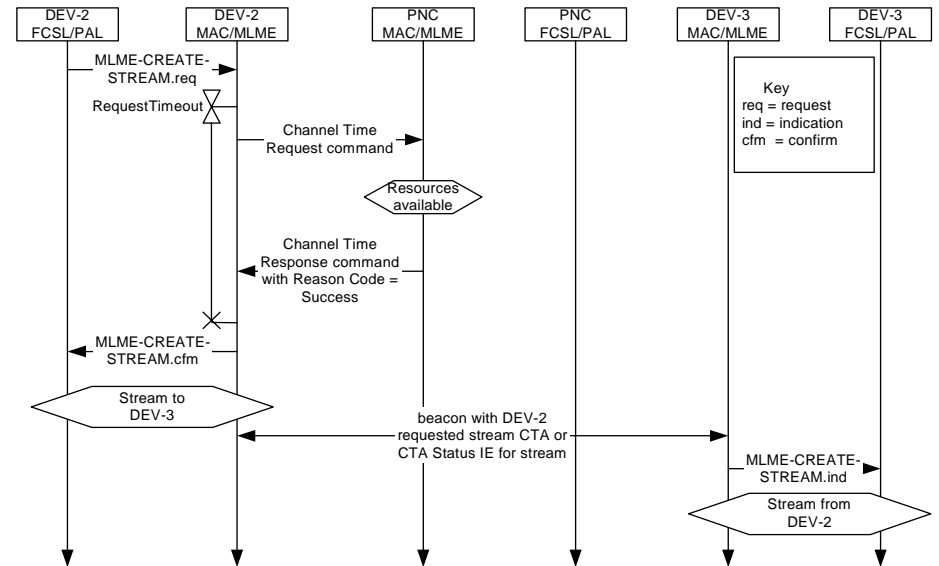
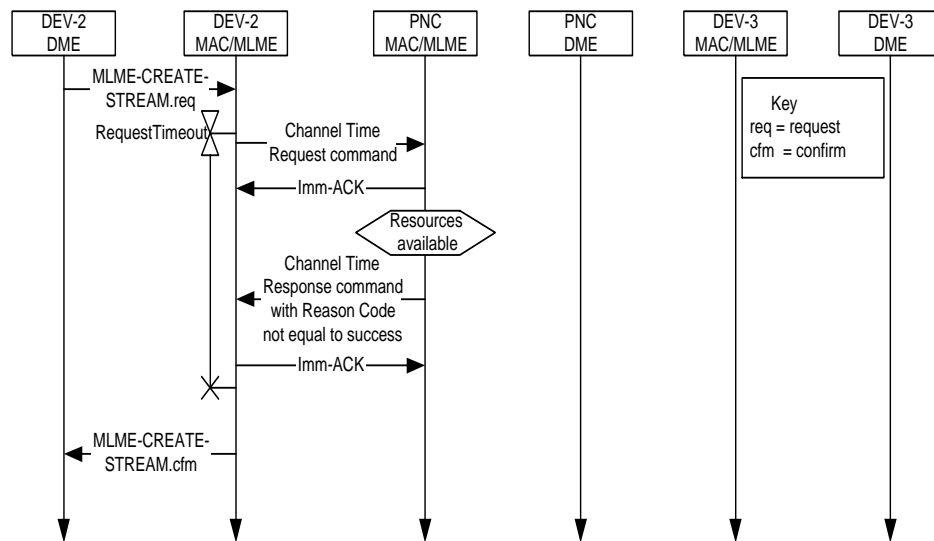
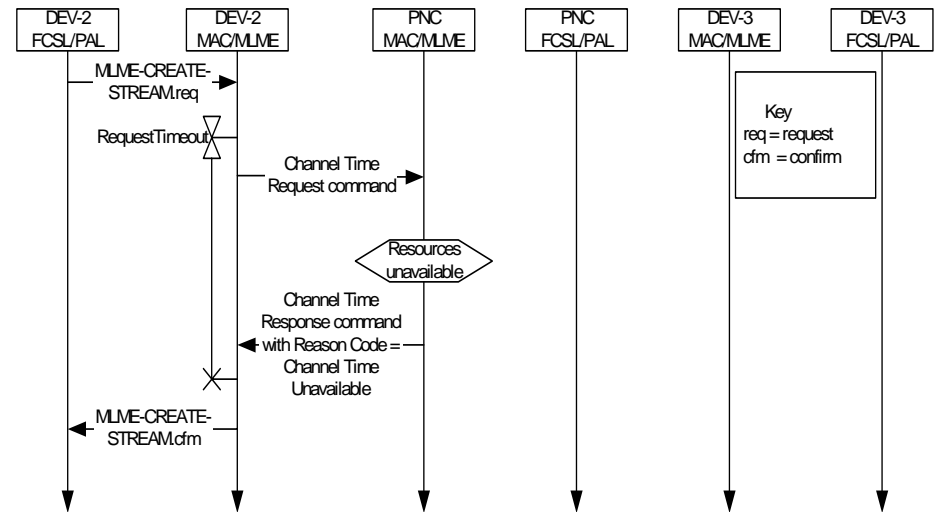
Suggested

Figure 103 - PNC sending the Piconet Services command to a newly associated DEV in response to a request in the association process

Current**Figure 104 - DEV initiated disassociation MSC****Suggested****Figure 104 - DEV initiated disassociation MSC**

Current**Figure 105 - PNC initiated disassociation MSC****Suggested****Figure 105 - PNC initiated disassociation MSC**

Current**Figure 114 - MSC for creating a DEV-2 to DEV-3 stream****Suggested****Figure 114 - MSC for creating a DEV-2 to DEV-3 stream**

Current**Figure 115 - MSC for a denied DEV-2 to DEV-3 stream****Suggested****Figure 115 - MSC for a denied DEV-2 to DEV-3 stream**

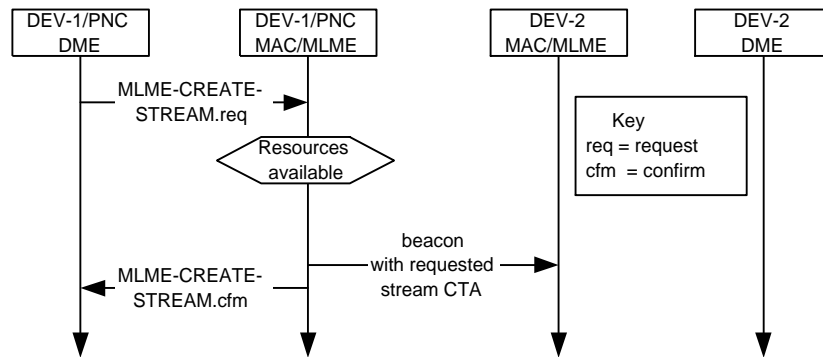
Current**Suggested**

Figure 116 - MSC for creating a DEV-1/PNC to DEV-2 stream

- Suggest removing this MSC and add text to standard that describes that the DEV component of the PNC does not send commands over the air when it wishes to communicate with the PME.

Current

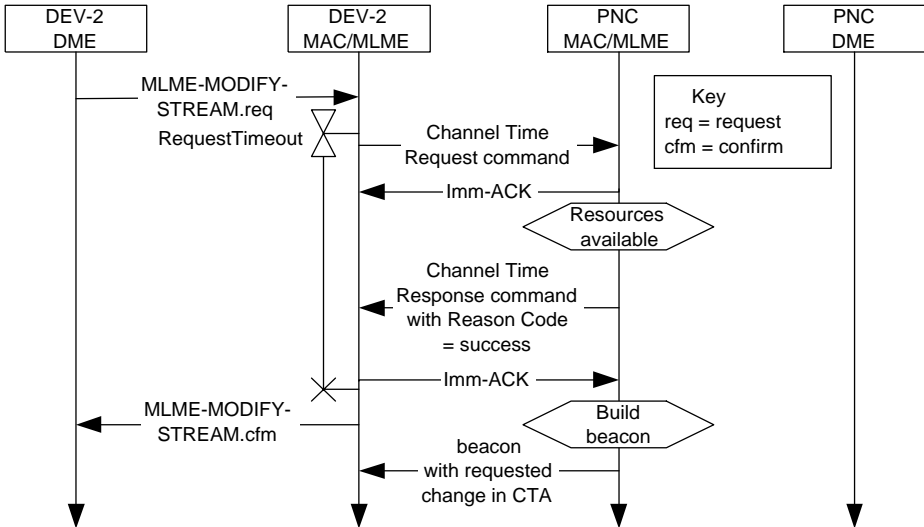


Figure 117 - MSC for modifying a stream

Suggested

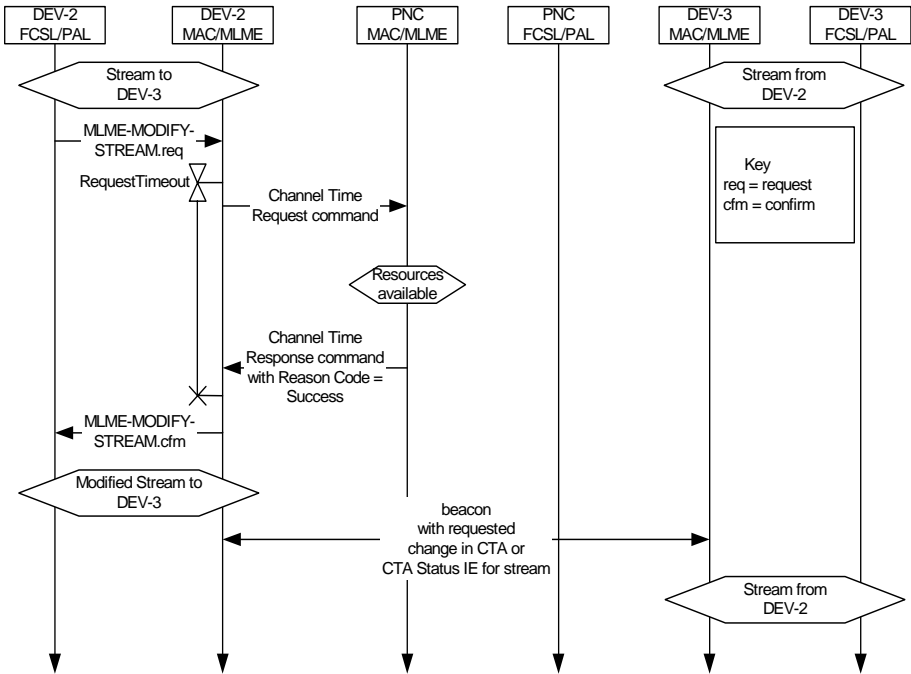
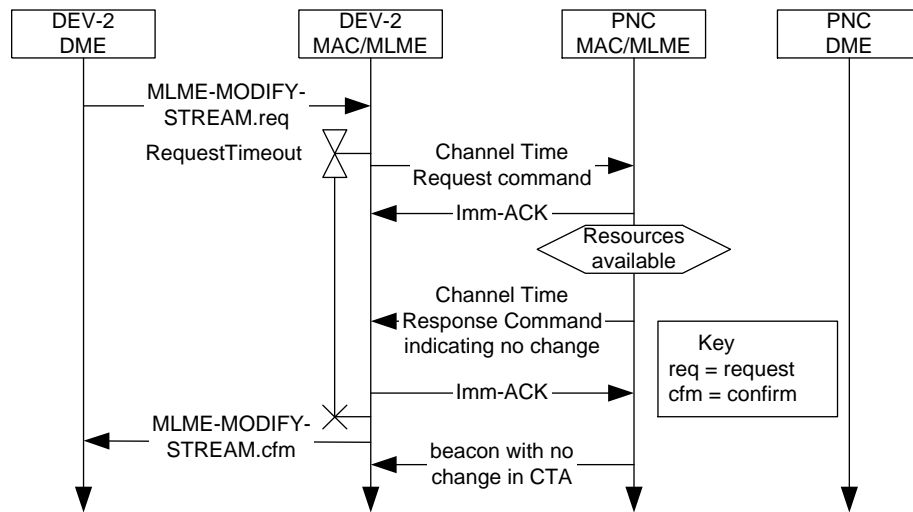
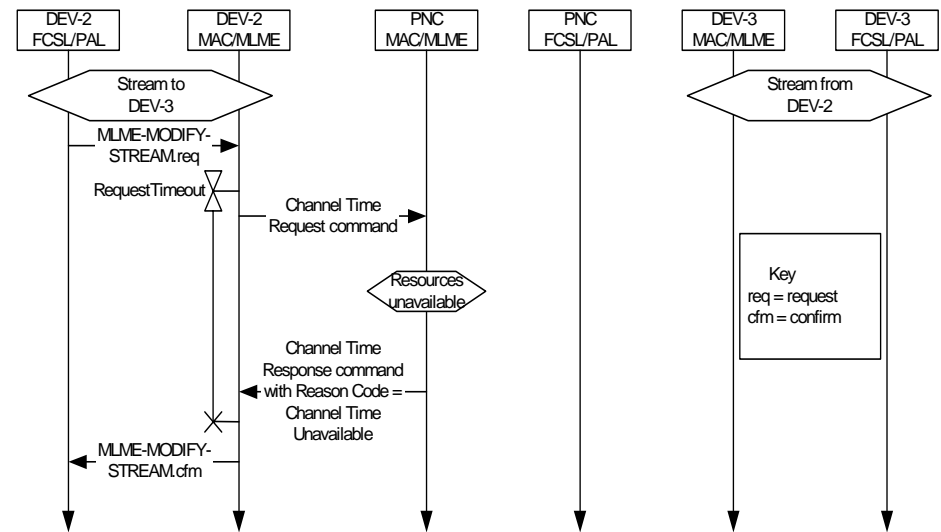


Figure 117 - MSC for modifying a stream

Current**Suggested****Figure 118 - MSC for a denied stream modification****Figure 118 - MSC for a denied stream modification**

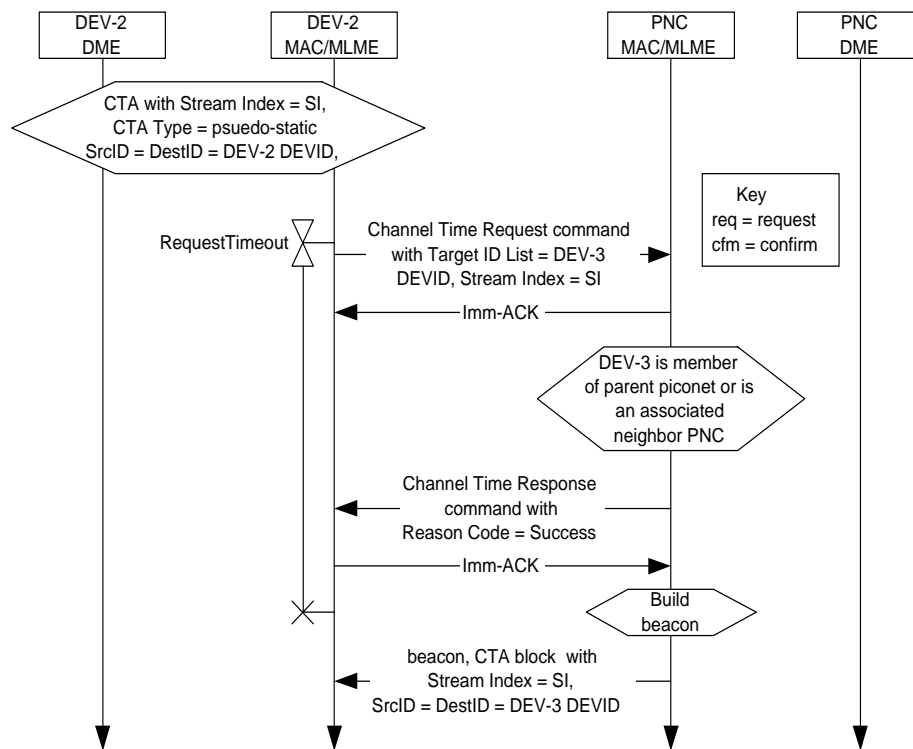
Current

Figure 119 - MSC for the handing over control of a private, pseudo-static CTA

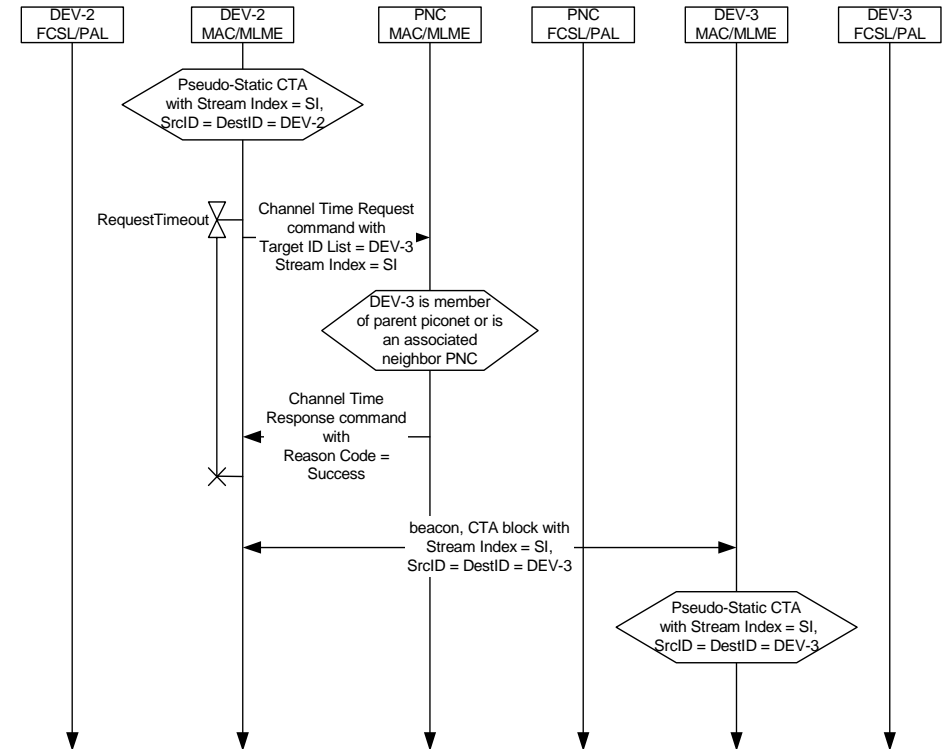
Suggested

Figure 119 - MSC for the handing over control of a private, pseudo-static CTA

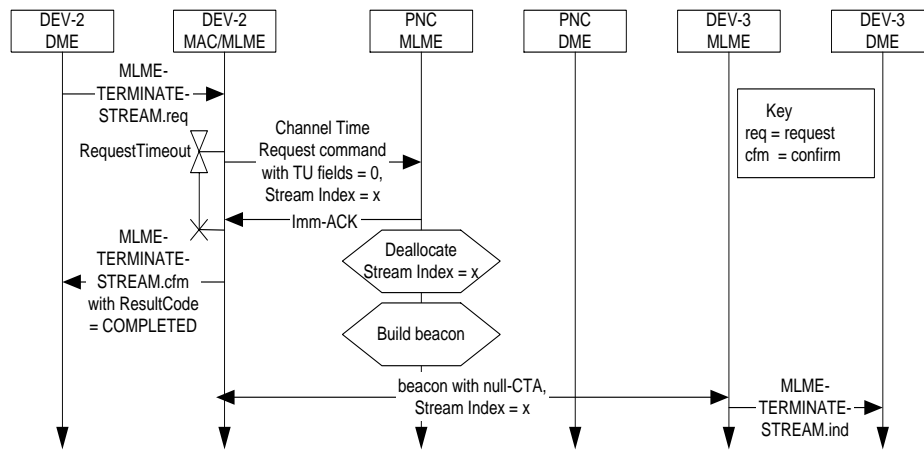
Current

Figure 120 - MSC of source DEV-2 requesting termination of its stream

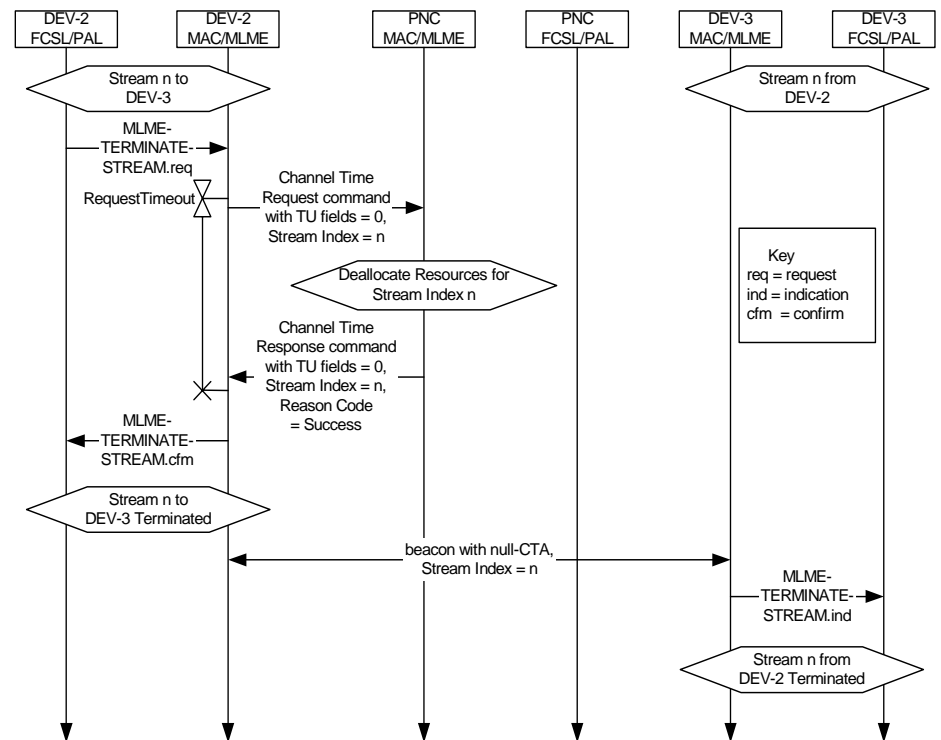
Suggested

Figure 120 - MSC of source DEV-2 requesting termination of its stream

- Suggest defining NULL CTA such that a reason code for the stream termination can be provided to the Target DEV for the stream.

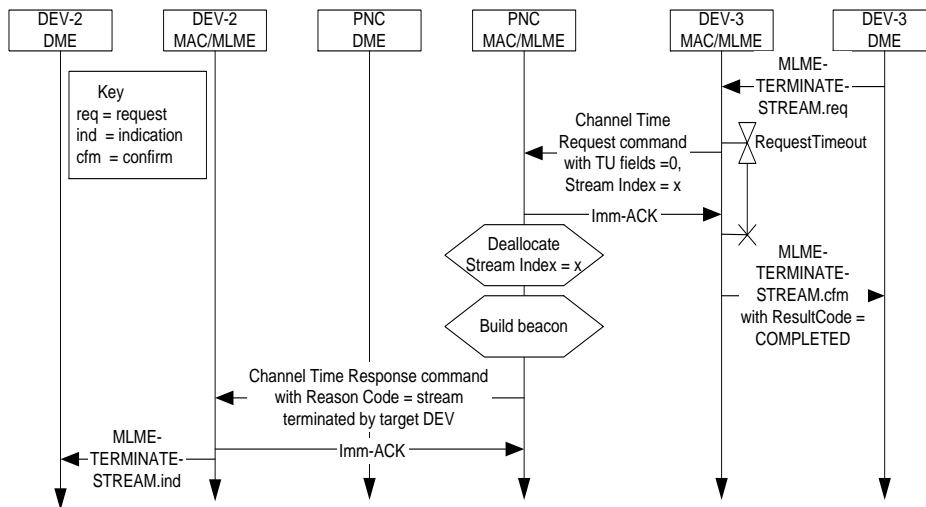
Current

Figure 121 - MSC of target DEV-3 requesting termination of source DEV-2's stream

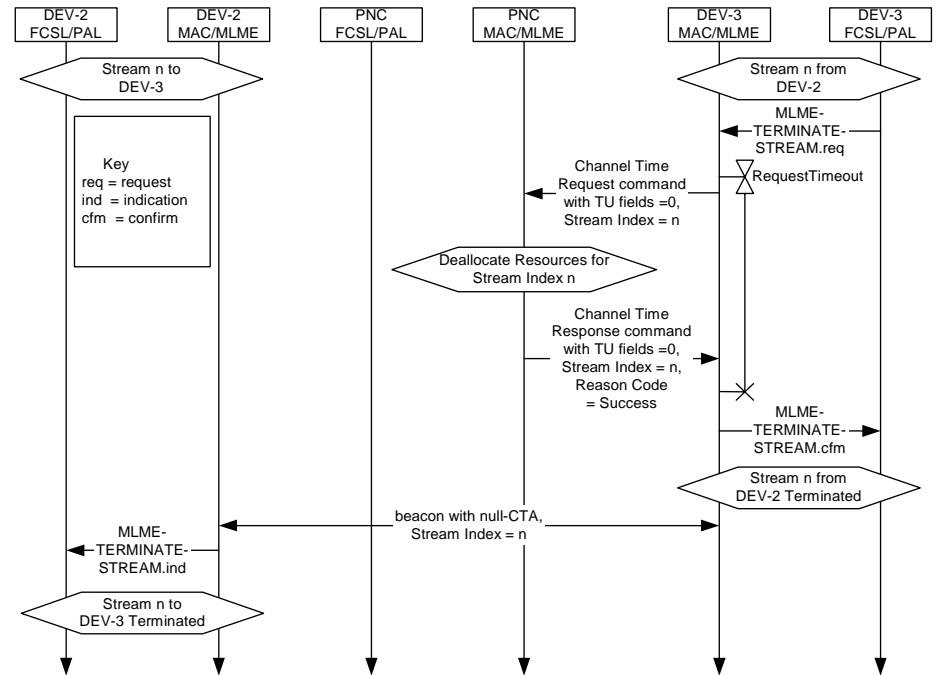
Suggested

Figure 121 - MSC of target DEV-3 requesting termination of source DEV-2's stream

- Suggest defining NULL CTA such that a reason code for the stream termination can be provided to the Source DEV for the stream.

Current

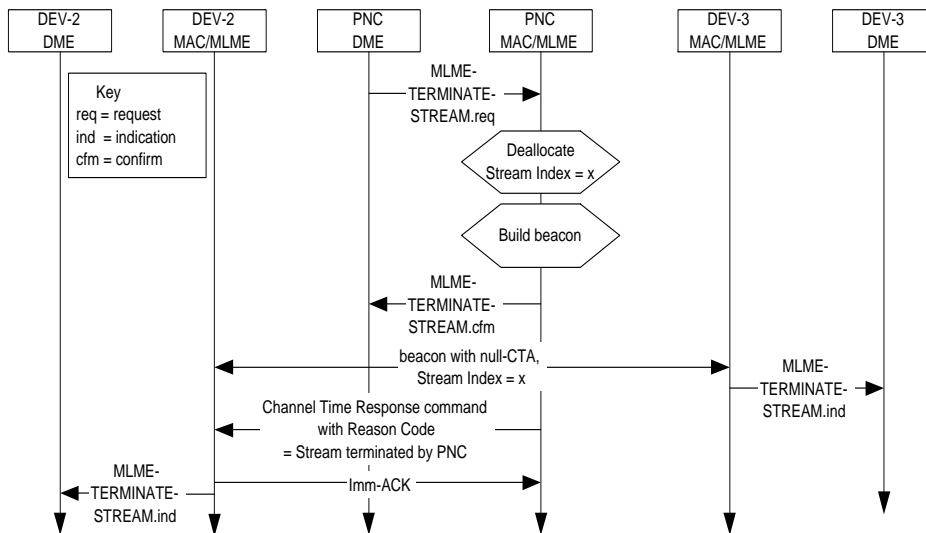


Figure 122 - MSC of PNC terminating a stream

Suggested

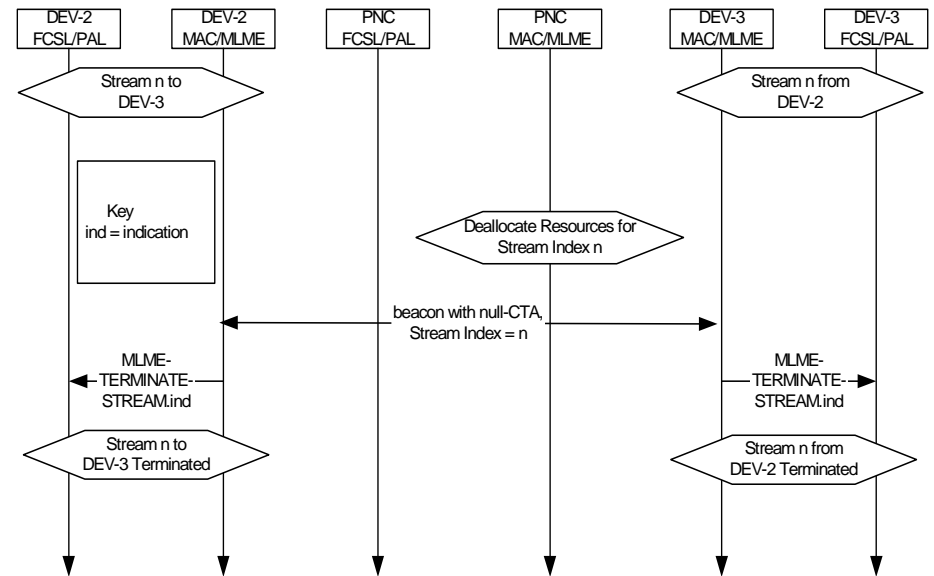


Figure 122 - MSC of PNC terminating a stream

- Suggest defining NULL CTA such that a reason code for the stream termination can be provided to both the Source and Target DEVs for the stream.

Current

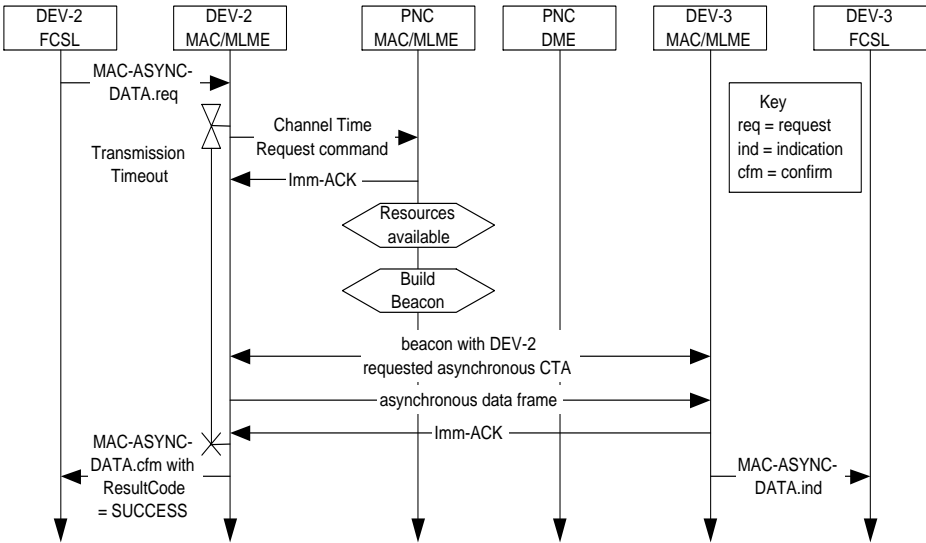


Figure 123 - MSC for reserving asynchronous data channel time

Suggested

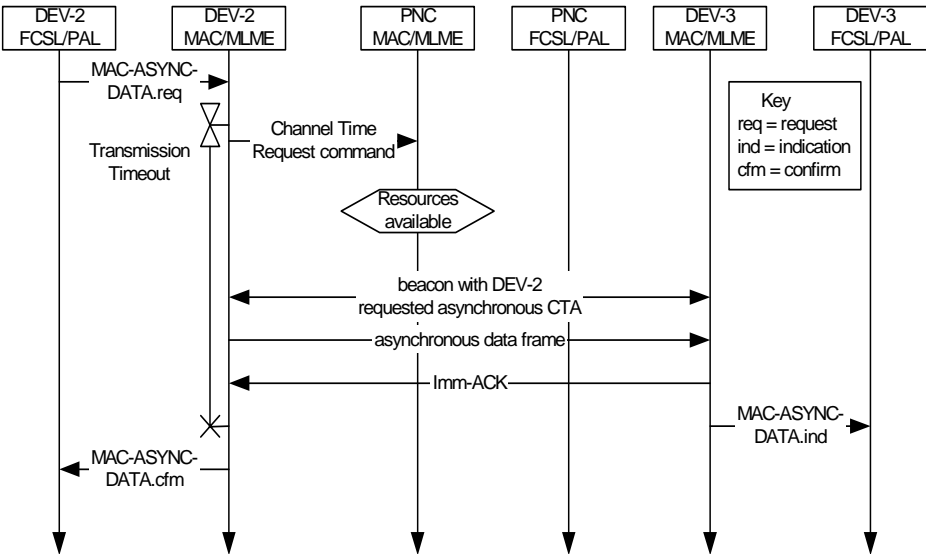


Figure 123 - MSC for reserving asynchronous data channel time

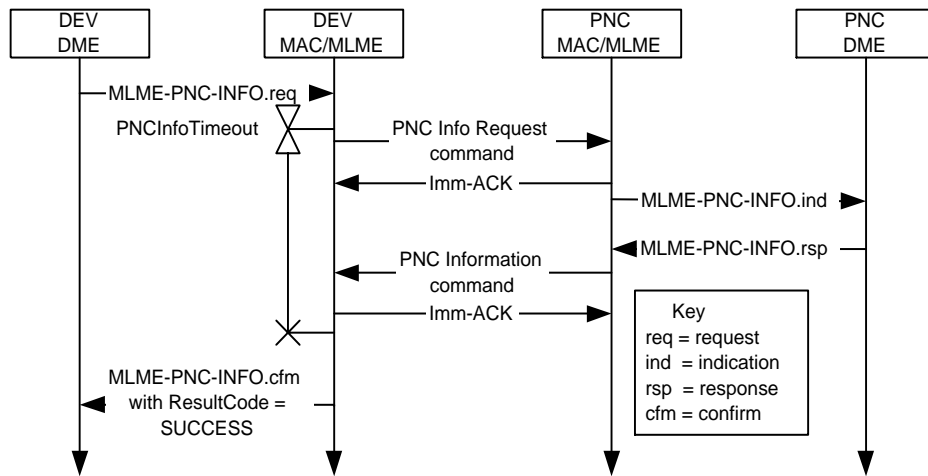
Current

Figure 127 - MSC for acquiring information regarding a specific DEV or all of the DEVs from the PNC using the PNC Information Request and PNC Information commands

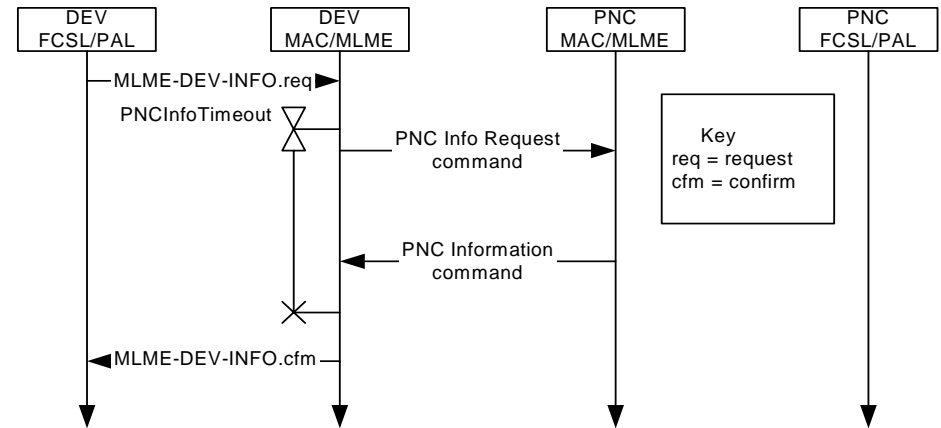
Suggested

Figure 127 - MSC for acquiring information regarding a specific DEV or all of the DEVs from the PNC using the PNC Information Request and PNC Information commands

Current

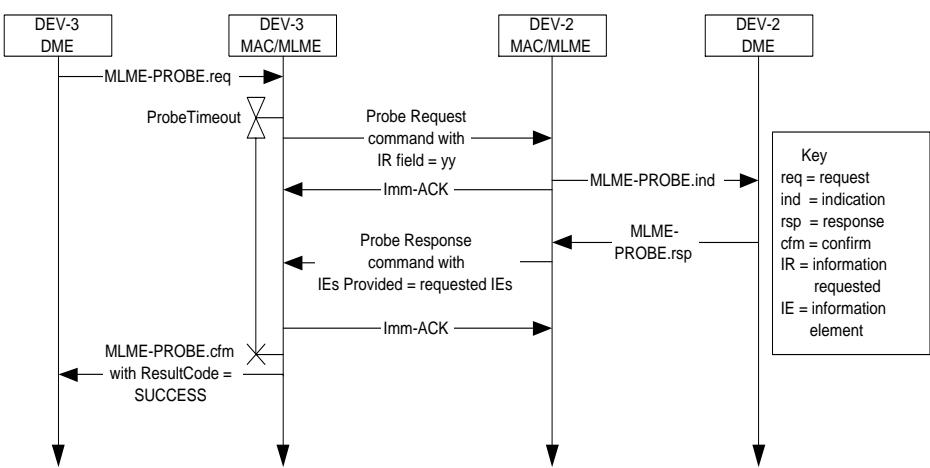


Figure 128 - MSC for acquiring DEV IEs using the Probe Request and Probe Response commands

Suggested

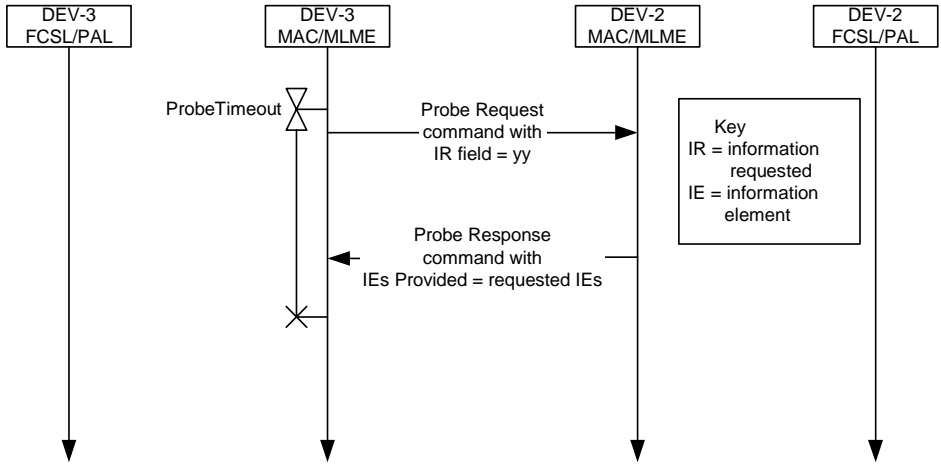


Figure 128 - MSC for acquiring DEV IEs using the Probe Request and Probe Response commands

Current

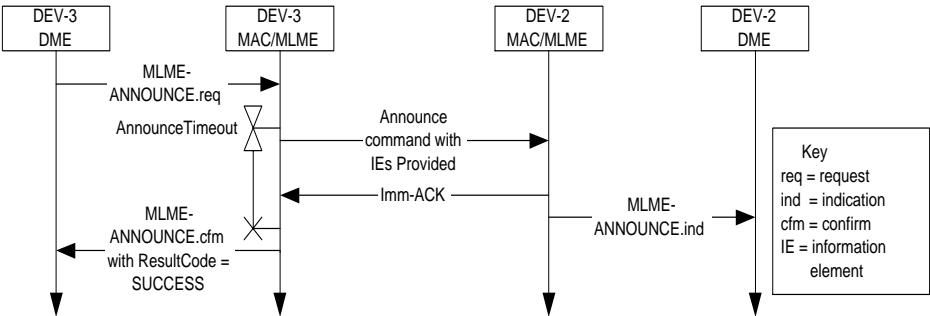


Figure 129 - MSC showing sending of information using the Announce command

Suggested

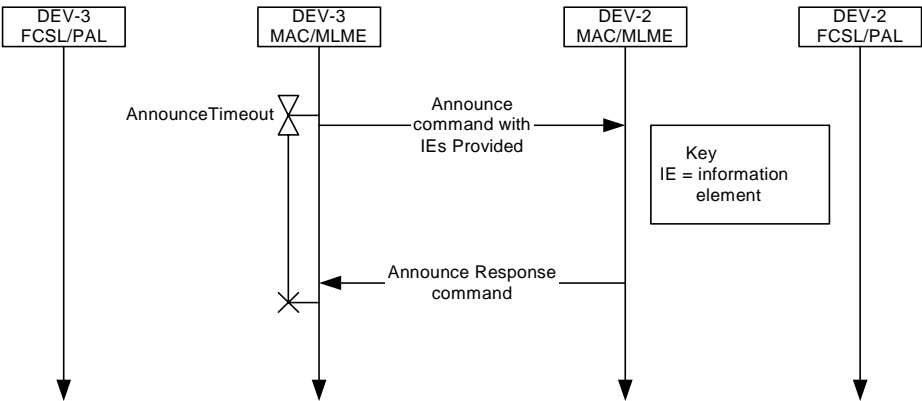


Figure 129 - MSC for sending unrequested DEV IEs using the Announce Request and Announce Response commands

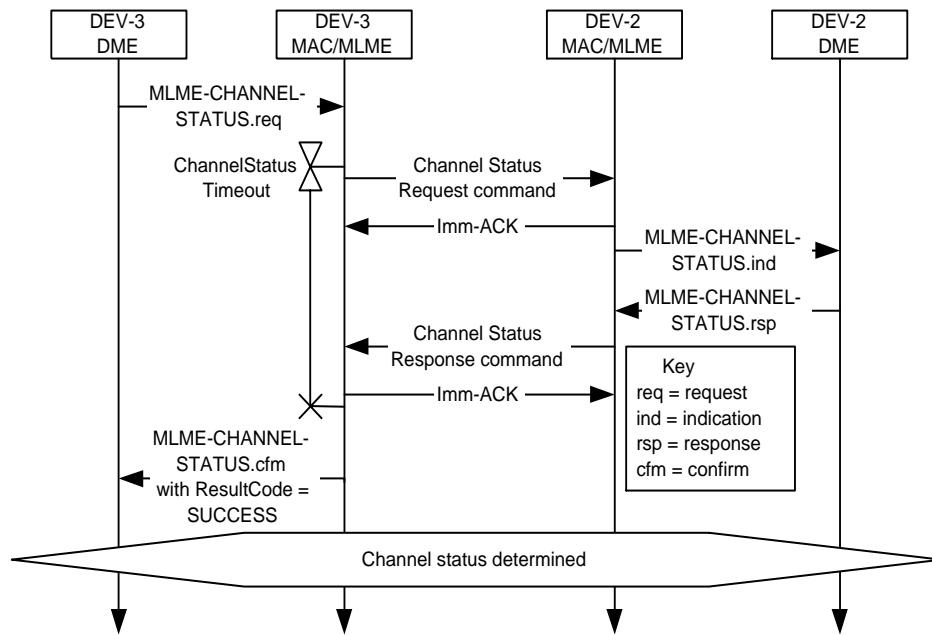
Current

Figure 130 - MSC for determining the channel status between two DEVs using the Channel Status Request and Channel Status Response commands

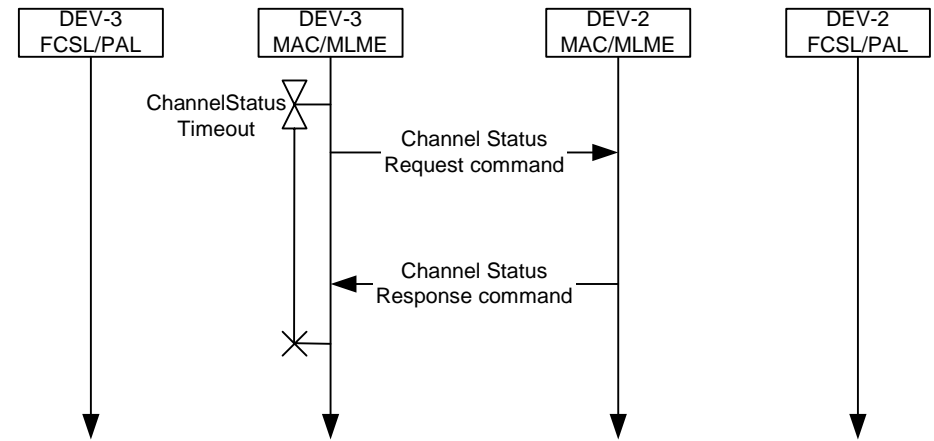
Suggested

Figure 130 - MSC for determining the channel status between two DEVs using the Channel Status Request and Channel Status Response commands

Current

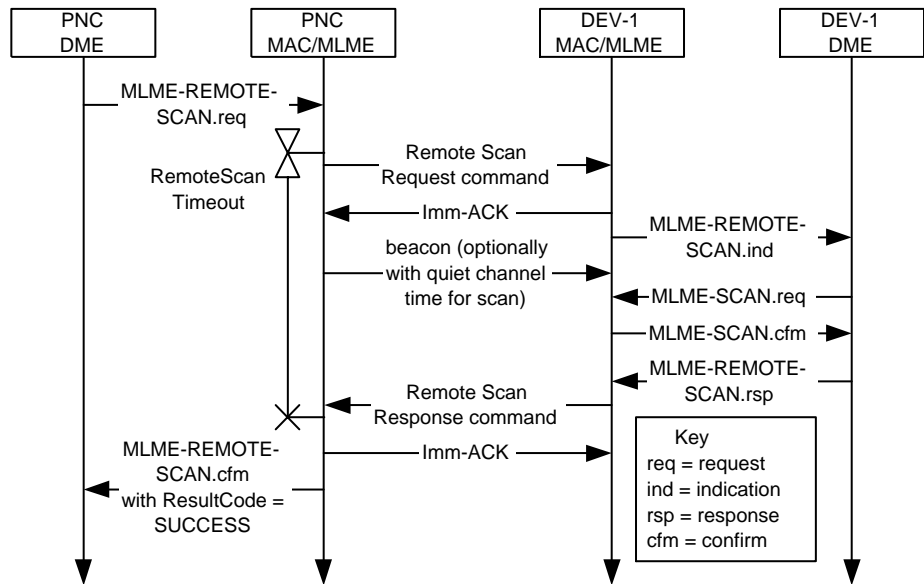


Figure 131 - Remote scan MSC

Suggested

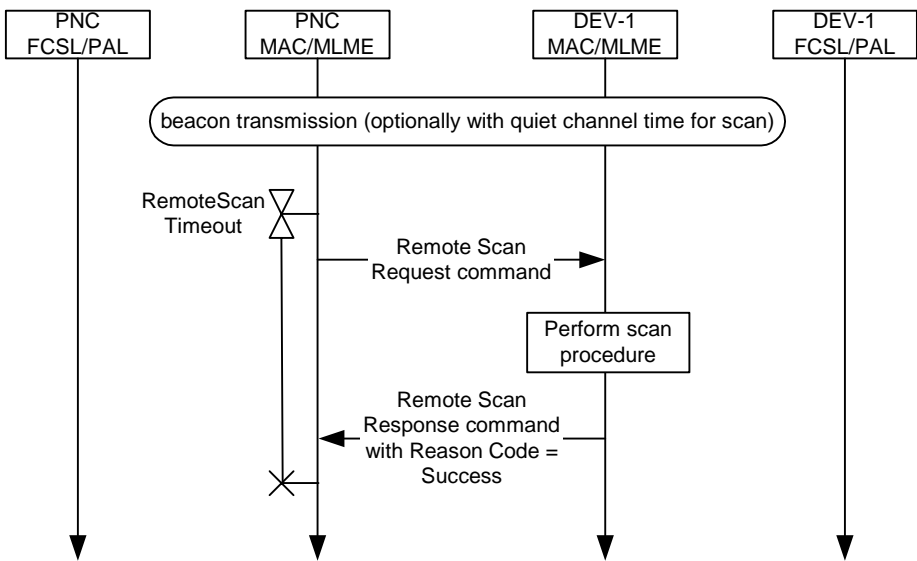


Figure 131 - Remote scan MSC

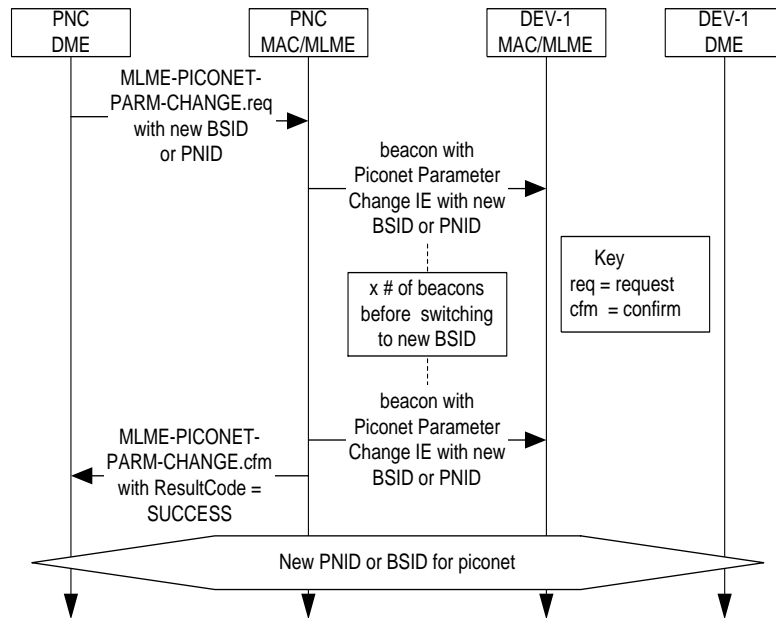
Current

Figure 134 - MSC for changing either the PNID or BSID for a piconet

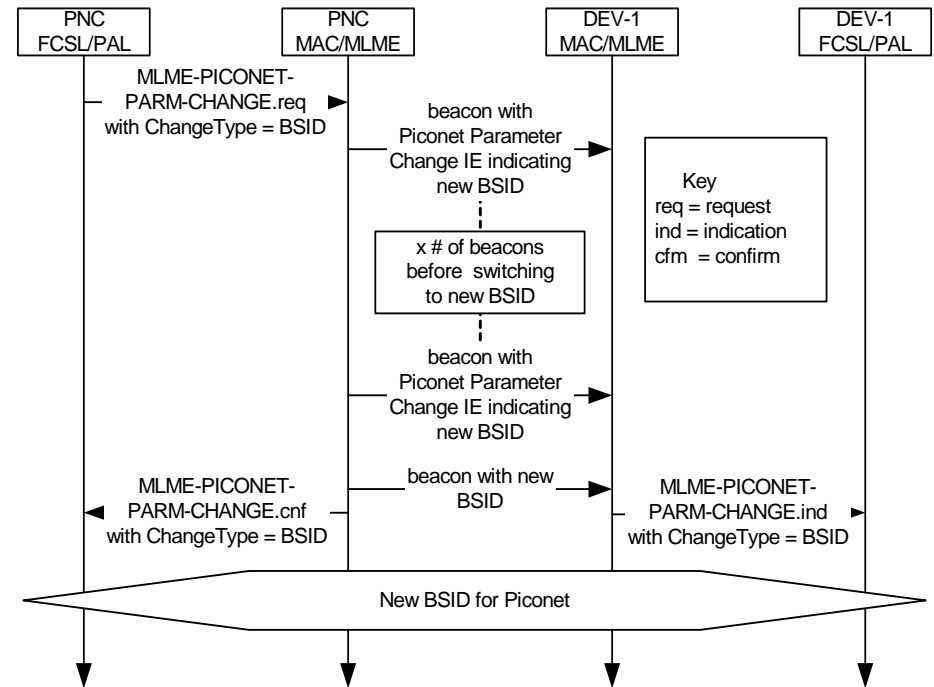
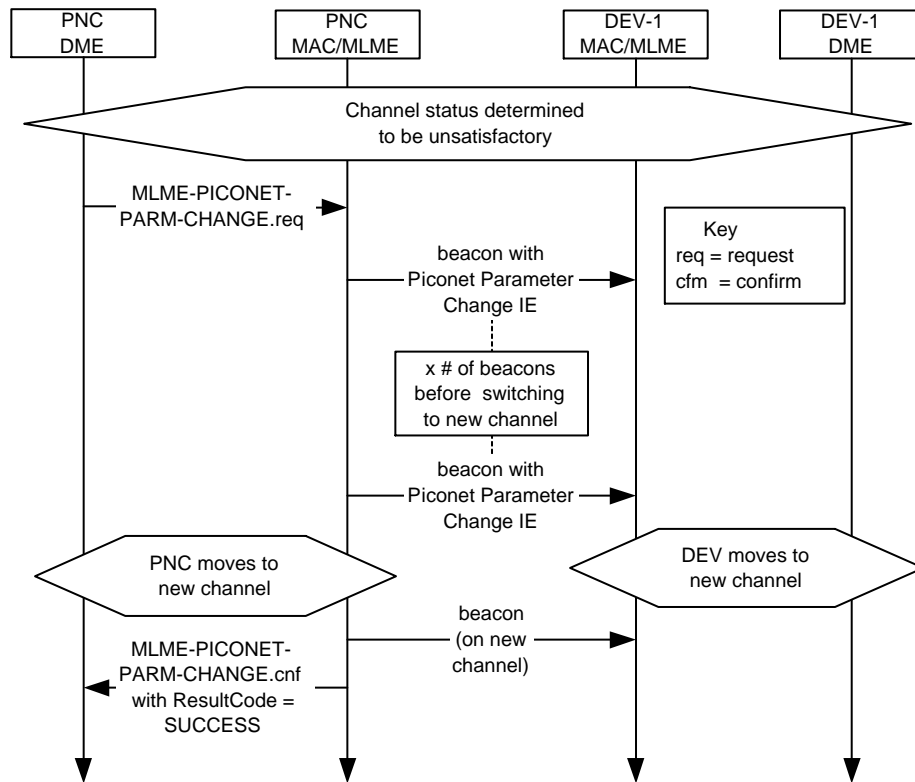
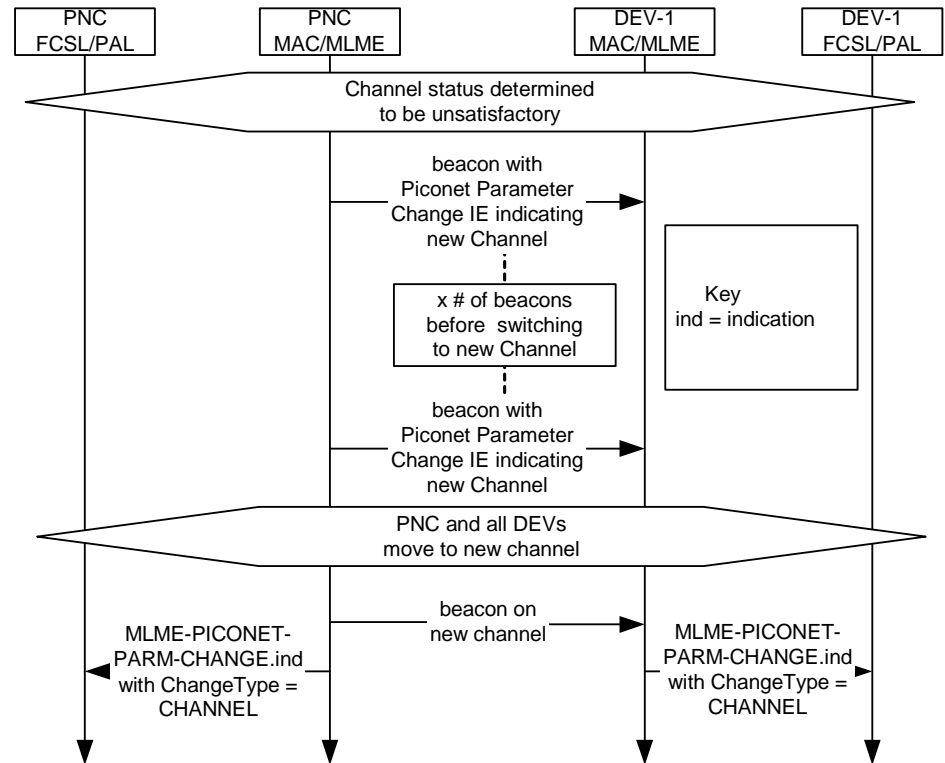
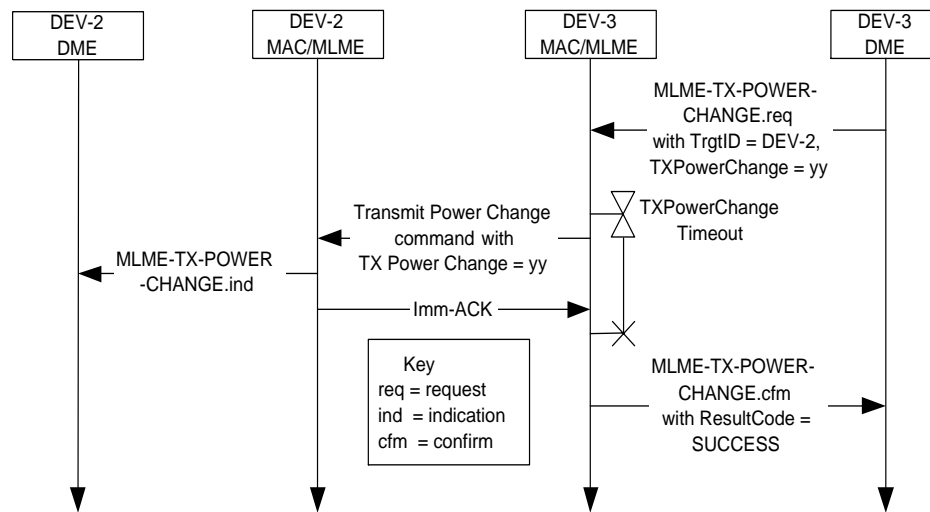
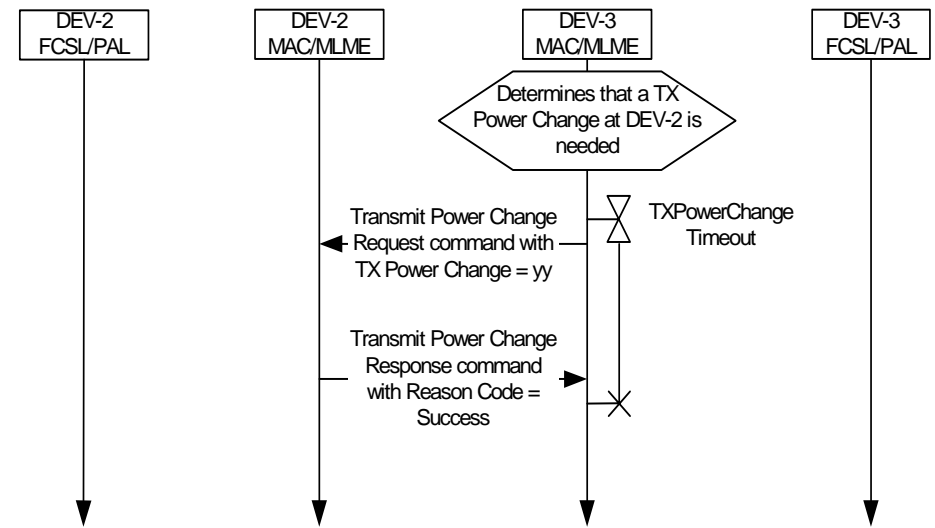
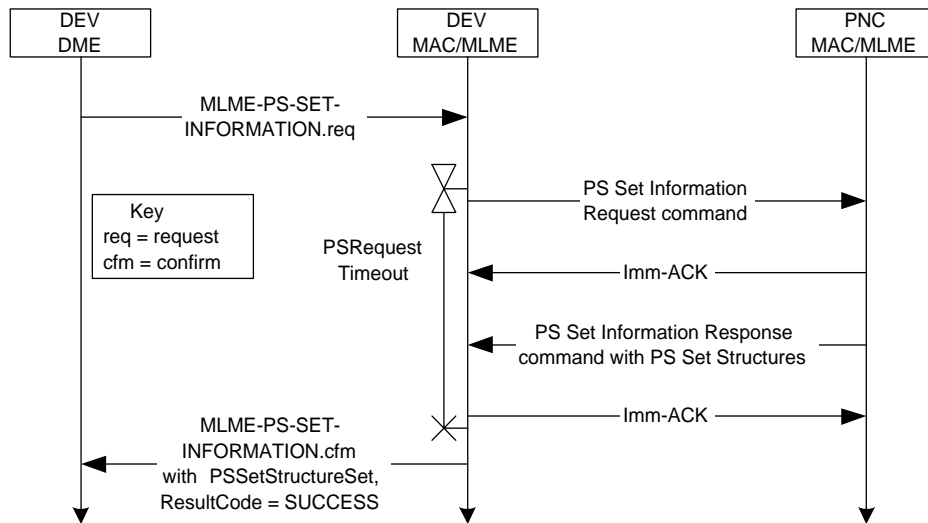
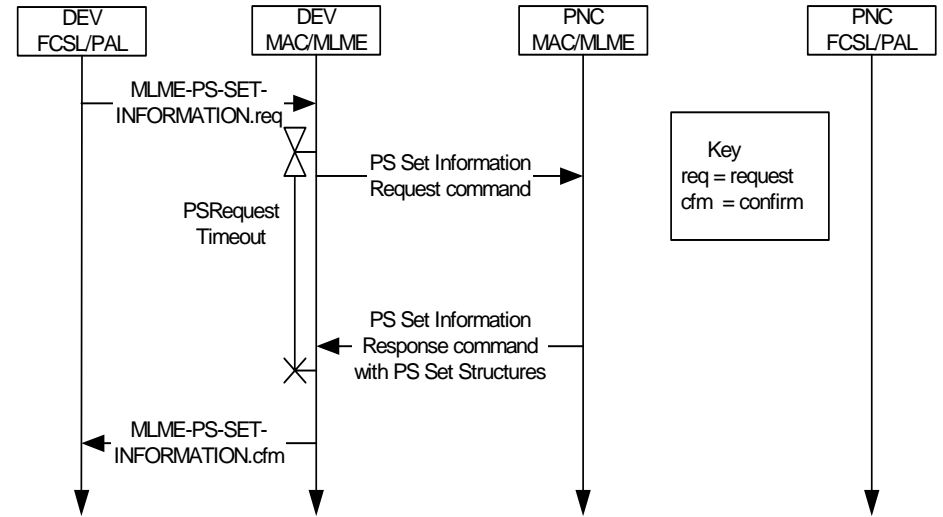
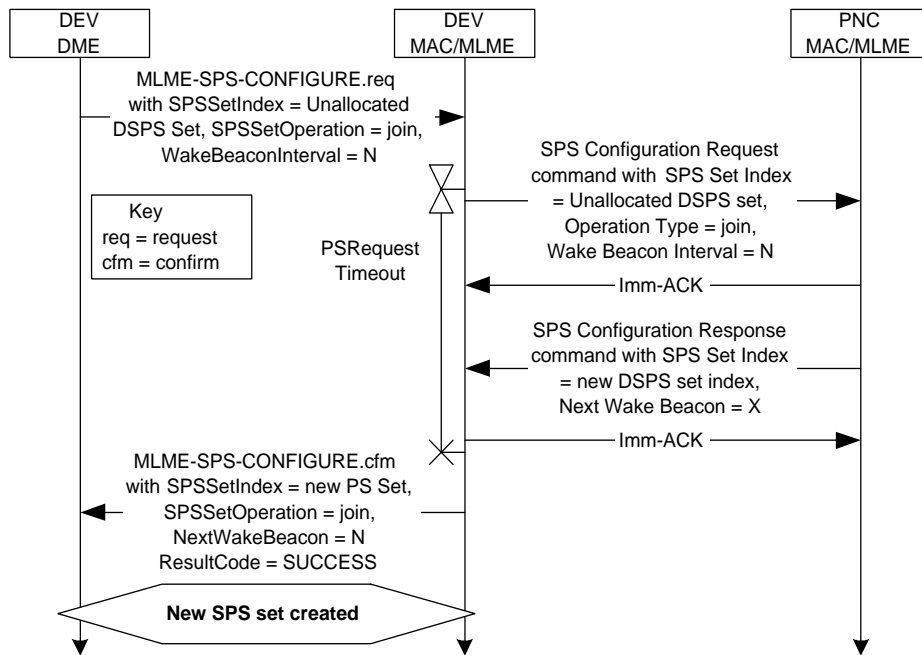
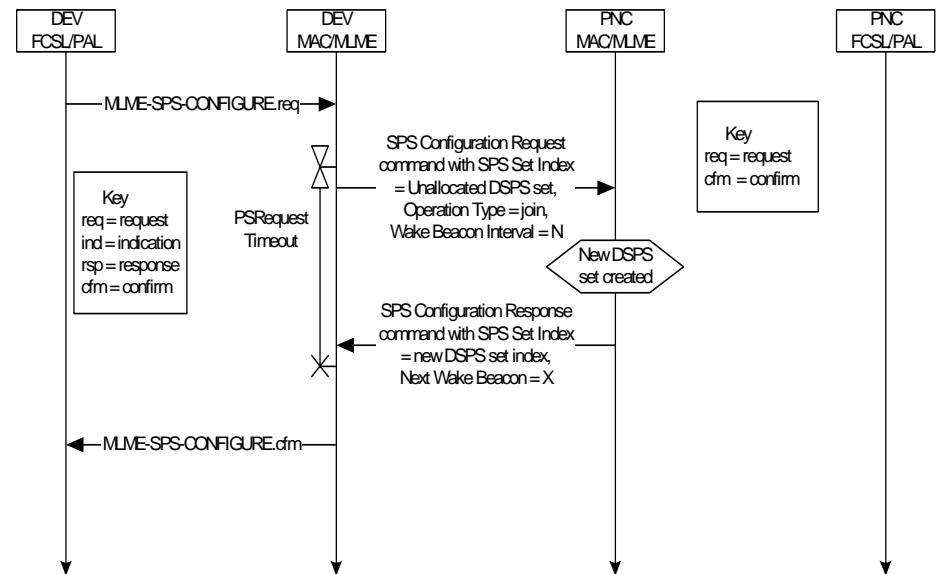
Suggested

Figure 134 - MSC for changing the BSID for a piconet

Current**Suggested****Figure 135 - MSC for changing piconet parameters****Figure 135 - MSC for changing the channel for a piconet**

Current**Figure 136 - Transmit power change MSC****Suggested****Figure 136 - Transmit power change MSC**

Current**Figure 140 - MSC for PS set information exchange****Suggested****Figure 140 - MSC for PS set information exchange**

Current**Figure 141 - MSC for DSPS set creation****Suggested****Figure 141 - MSC for DSPS set creation**

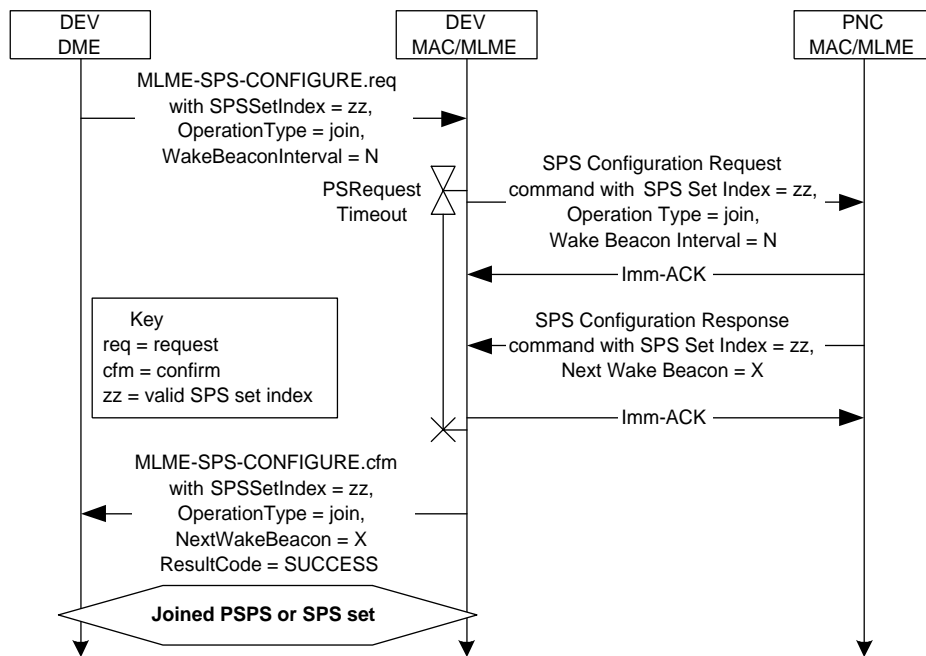
Current

Figure 142 - MSC showing a DEV joining an existing SPS set

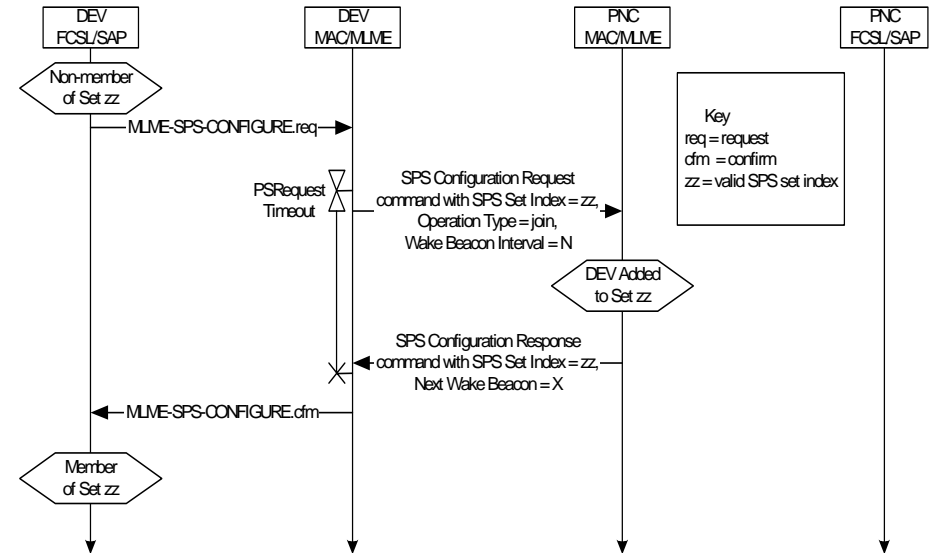
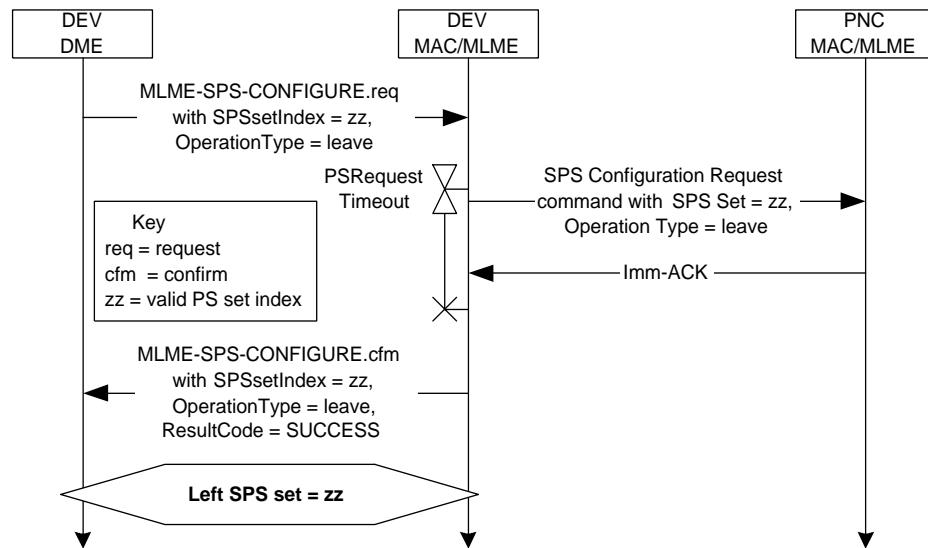
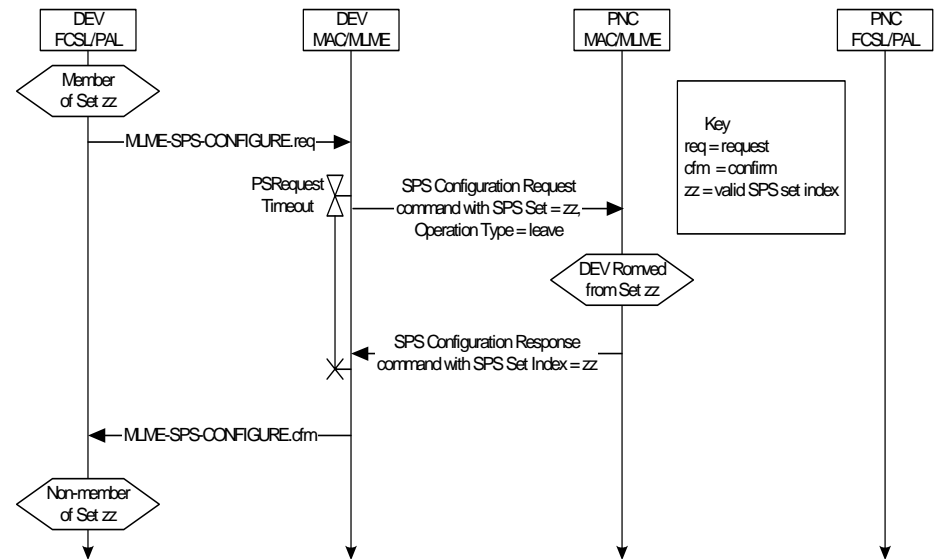
Suggested

Figure 142 - MSC showing a DEV joining an existing SPS set

Current**Figure 143 - MSC showing a DEV leaving an SPS set****Suggested****Figure 143 - MSC showing a DEV leaving an SPS set**

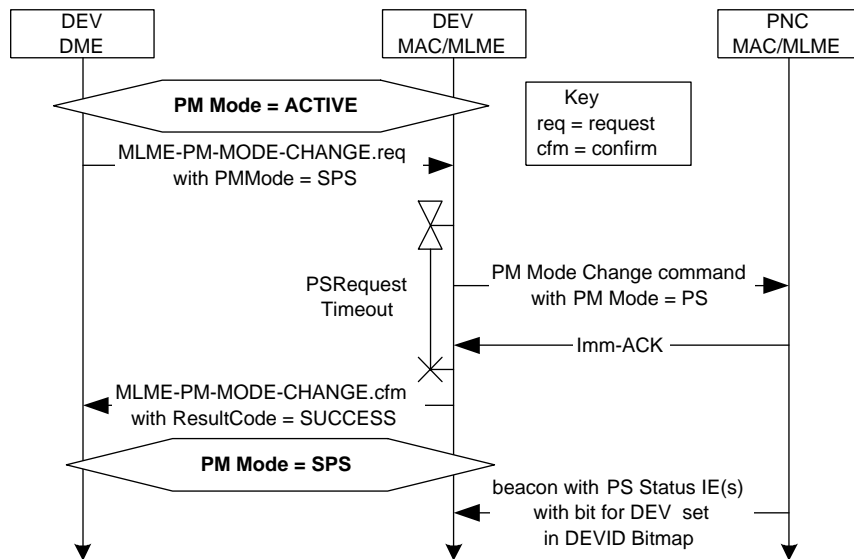
Current

Figure 144 - MSC showing DME initiated PM mode change from ACTIVE to an SPS mode

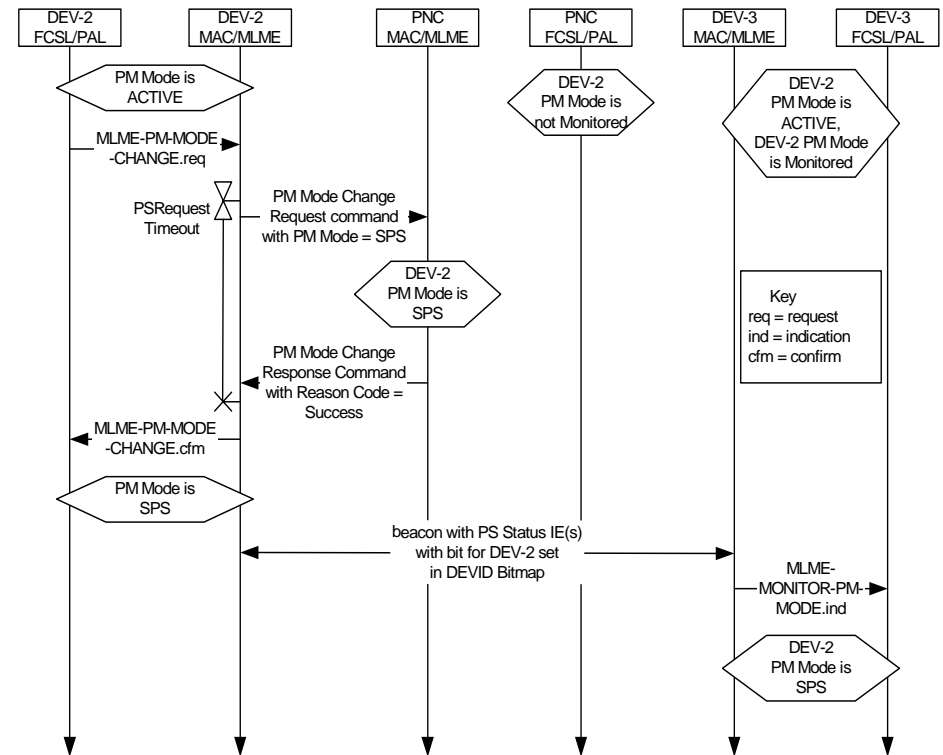
Suggested

Figure 144 - MSC showing DME initiated PM mode change from ACTIVE to an SPS mode

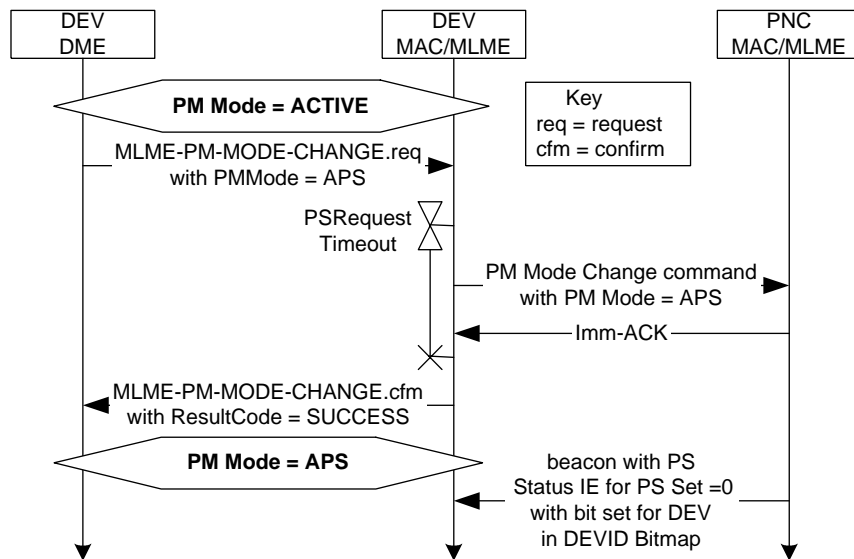
Current

Figure 145 - MSC showing DME initiated PM mode change from ACTIVE to APS

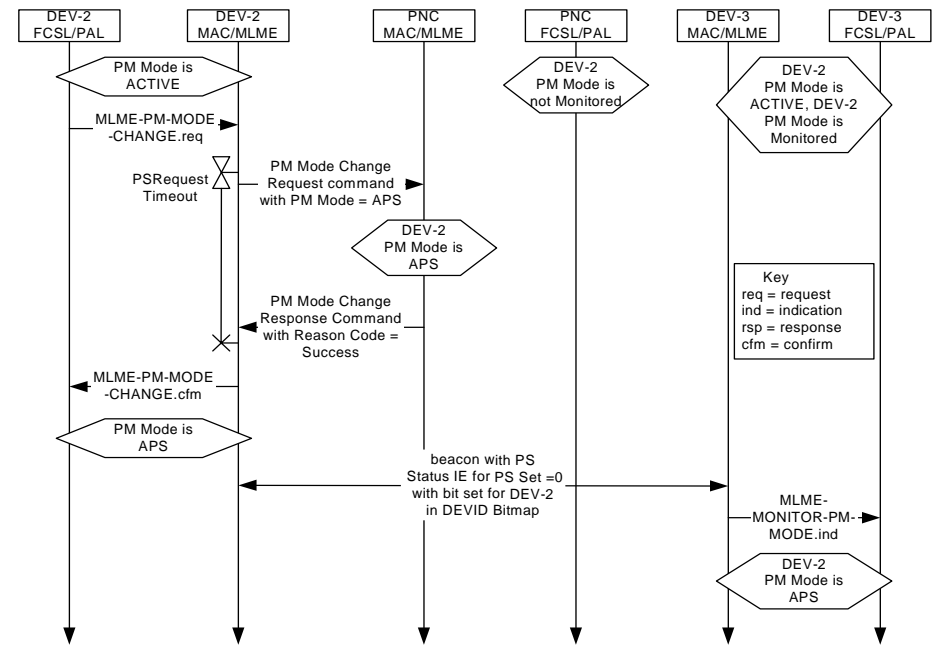
Suggested

Figure 145 - MSC showing DME initiated PM mode change from ACTIVE to APS

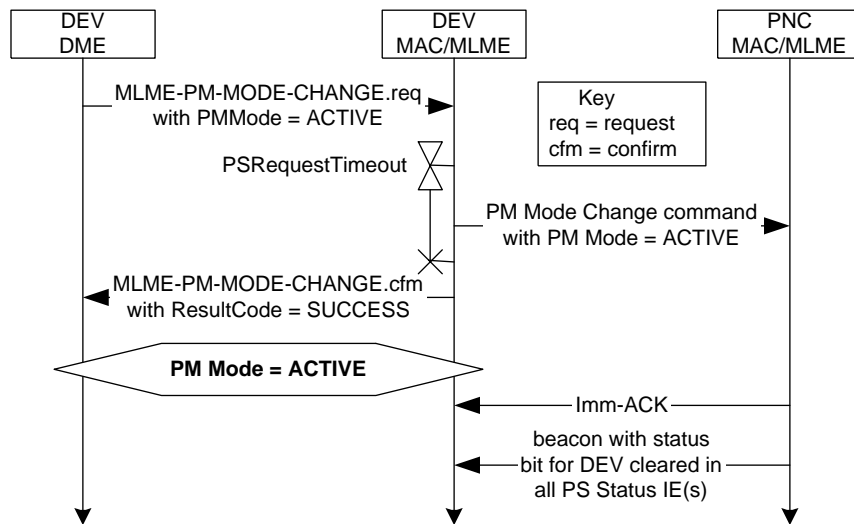
Current

Figure 146 - MSC showing DME initiated PM mode change from any PS mode to ACTIVE

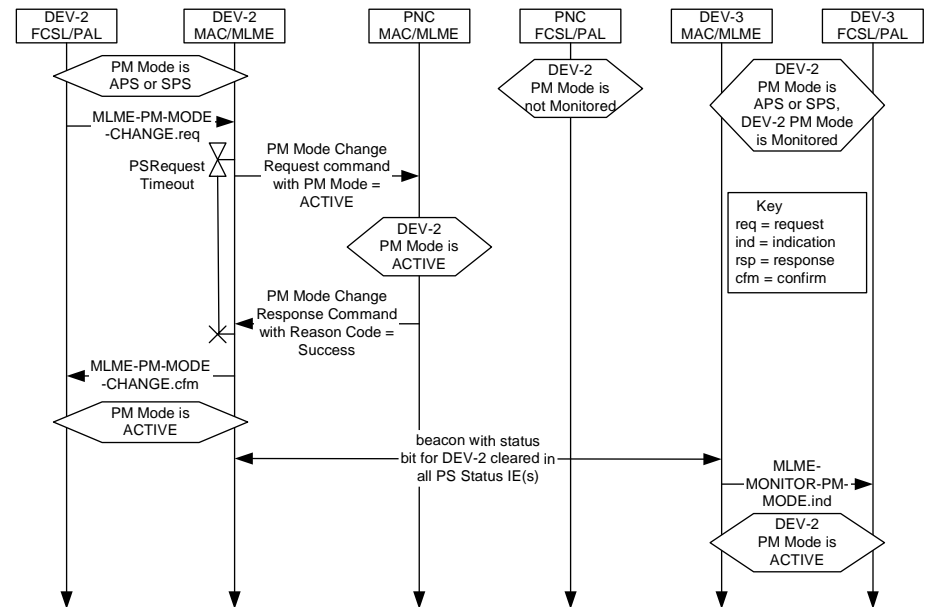
Suggested

Figure 146 - MSC showing DME initiated PM mode change from any PS mode to ACTIVE

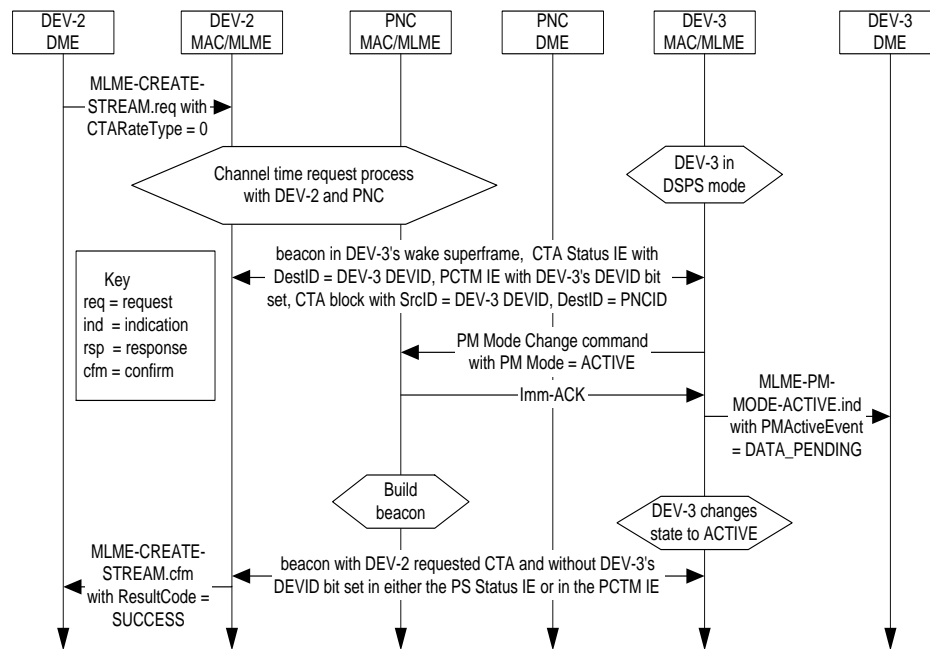
Current

Figure 147 - Message sequence showing MLME initiated PM mode change from DSPS to ACTIVE in response to a new channel time allocation

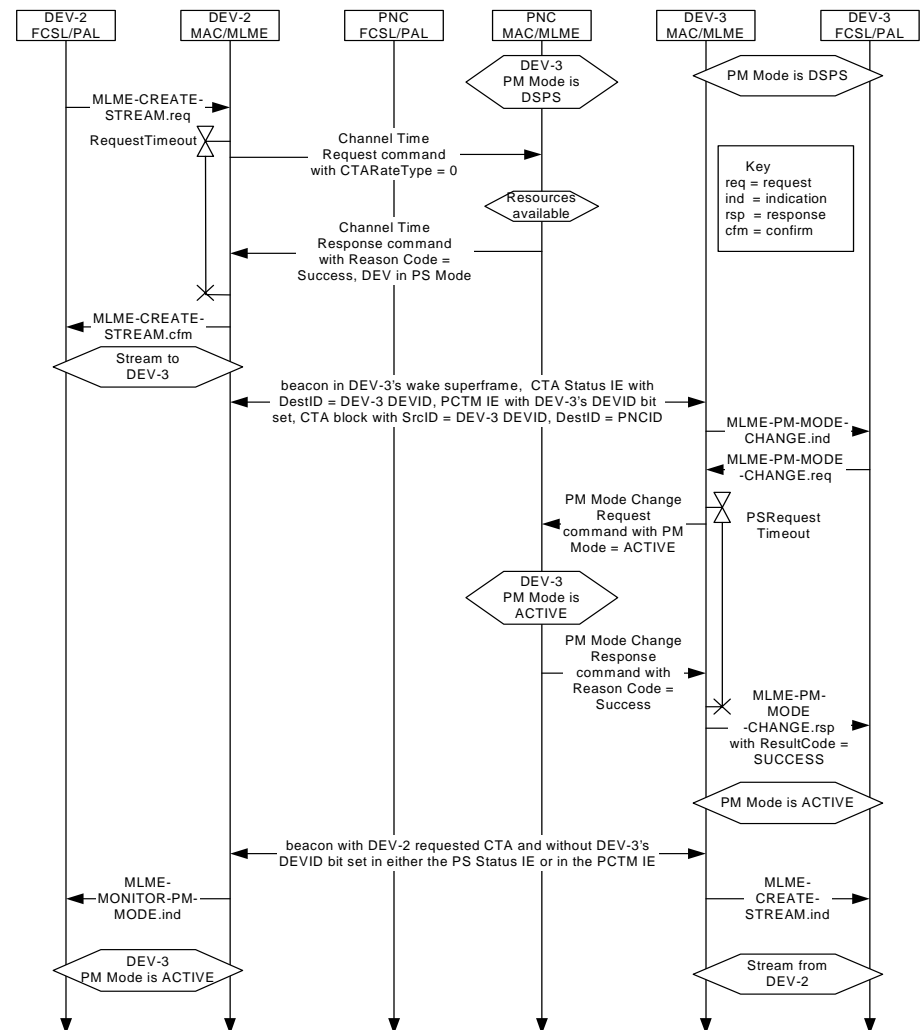
Suggested

Figure 147 - Message sequence showing MLME initiated PM mode change from DSPS to ACTIVE in response to a new channel time allocation

- Suggest monitoring of target DEV PS Mode be automatically activated in channel time request is received for a PS DEV.

urrent

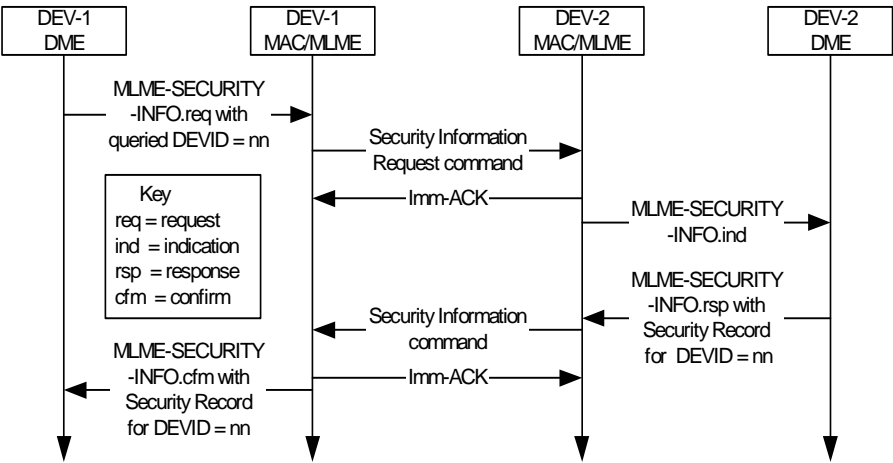


Figure 148—Message sequence chart for DEV-DEV Security information request

Suggested

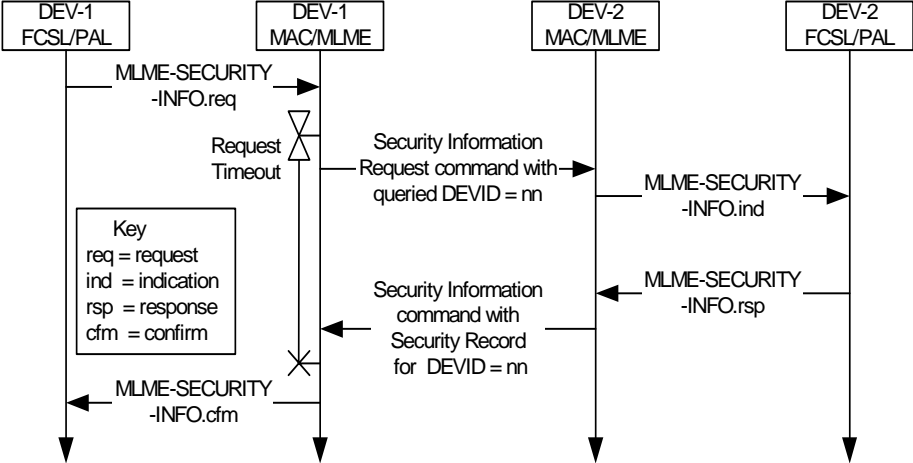


Figure 148—Message sequence chart for DEV-DEV Security information request

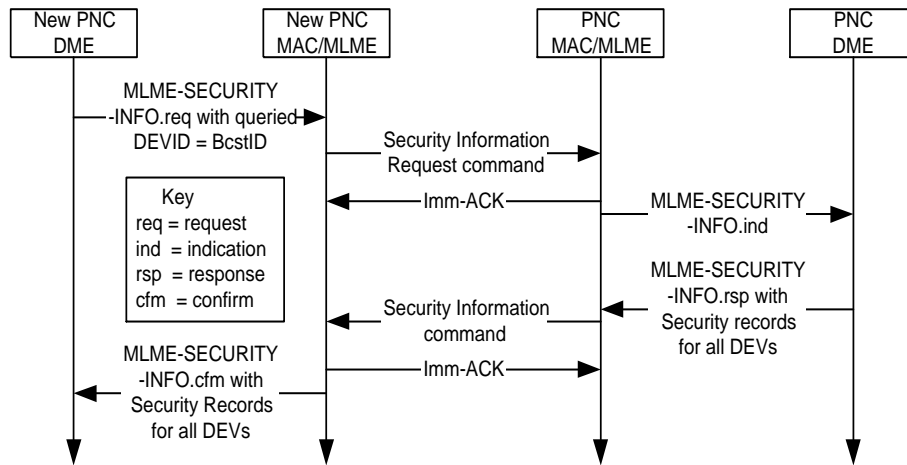
Current

Figure 149—Message sequence chart for New PNC-Old PNC Security Information transfer

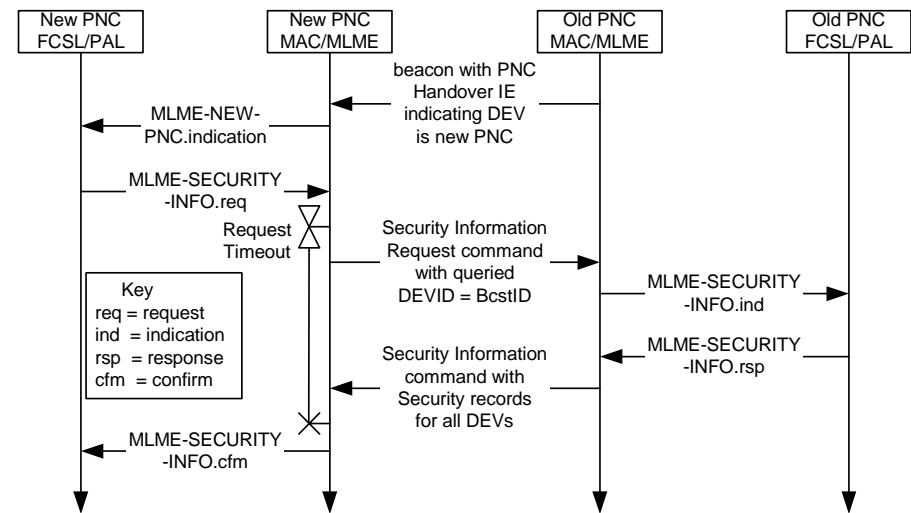
Suggested

Figure 149—Message sequence chart for New PNC-Old PNC Security Information transfer

- Suggest FCSL/PAL of new PNC told of handover at the reception of first Handover IE.

Current

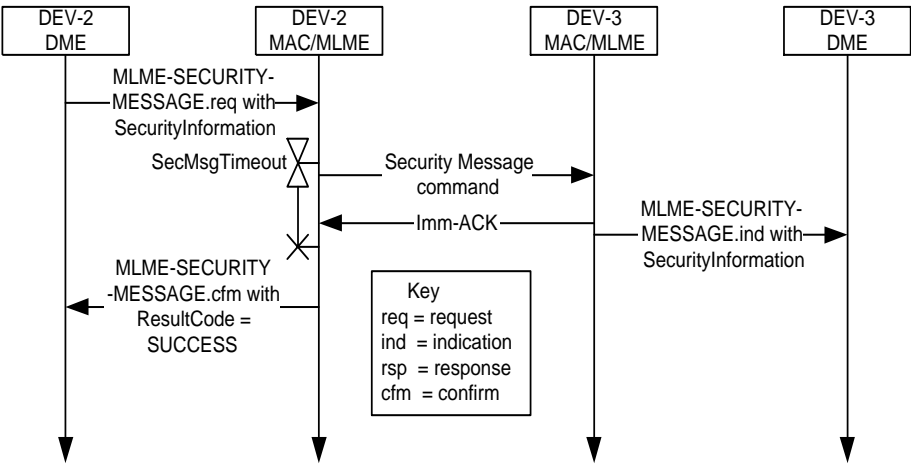


Figure 150—Message sequence chart for sending security information with the Security Message command

Suggested

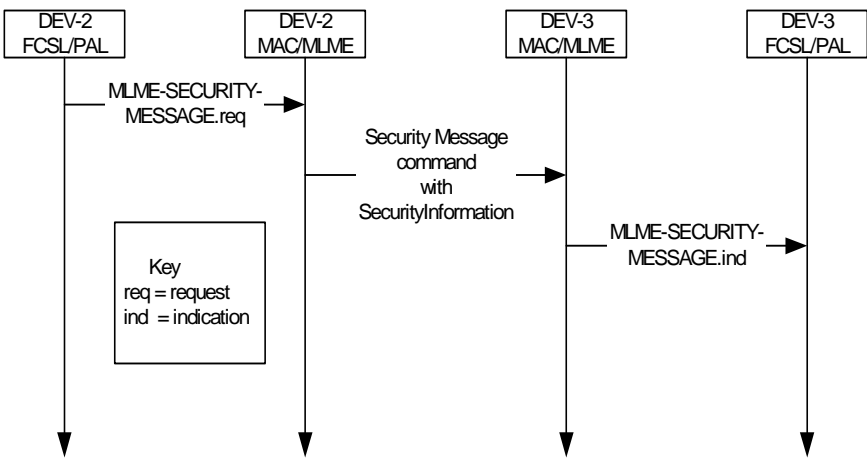


Figure 150—Message sequence chart for sending security information with the Security Message command

Current

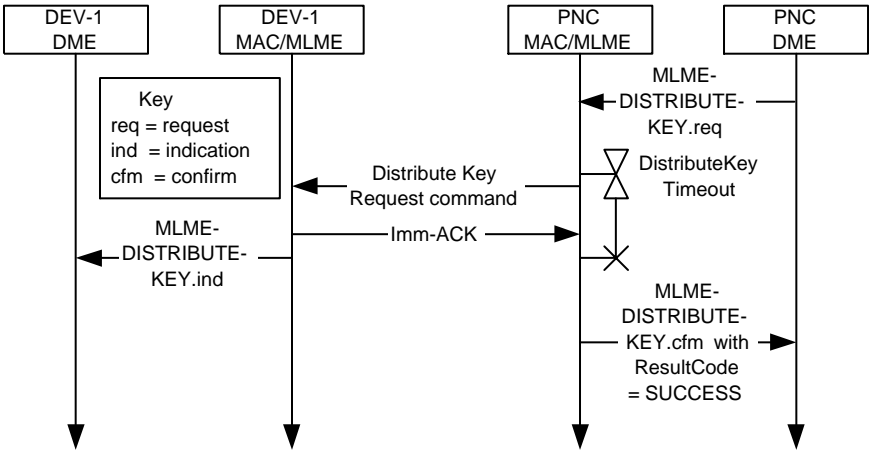


Figure 151—Message sequence chart for PNC-DEV key distribution

Suggested

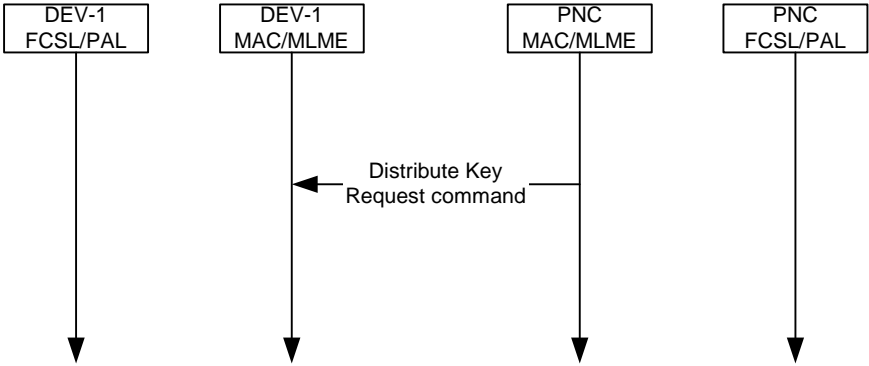


Figure 151—Message sequence chart for PNC-DEV key distribution

Current

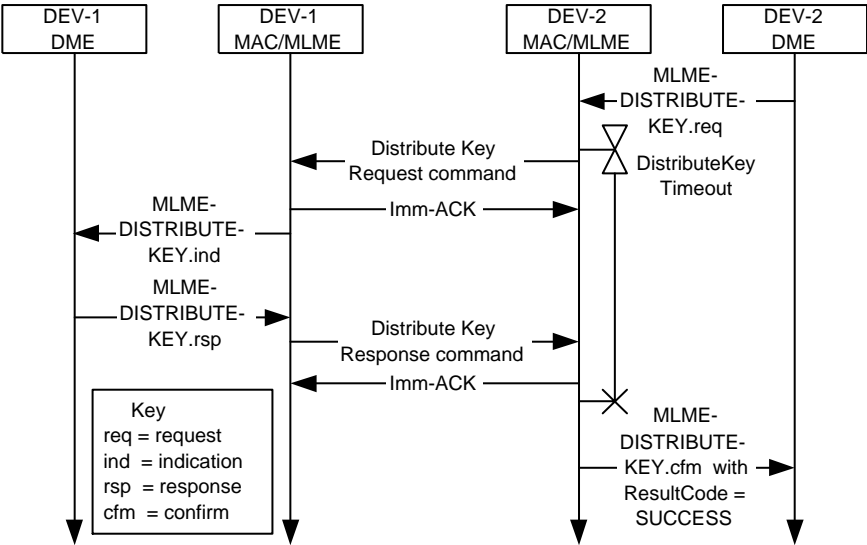


Figure 152—Message sequence chart for peer-to-peer key distribution

Suggested

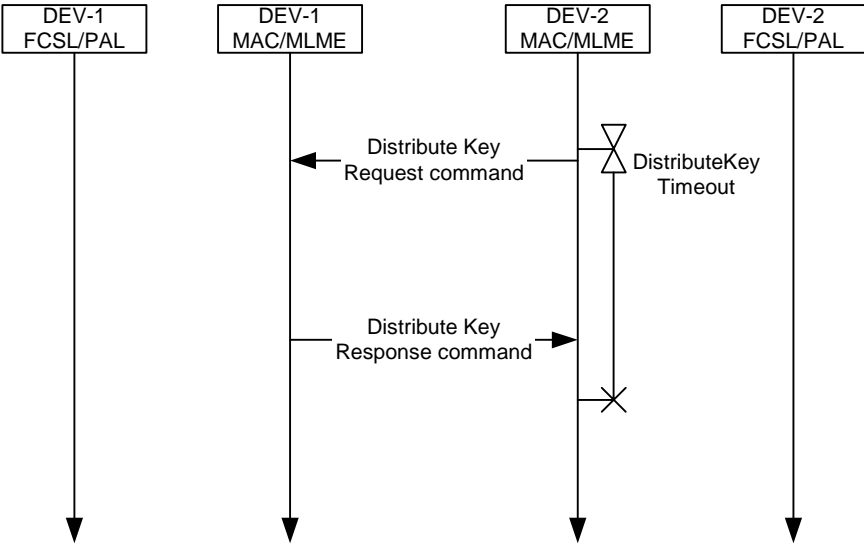


Figure 152—Message sequence chart for peer-to-peer key distribution

Current

Suggested

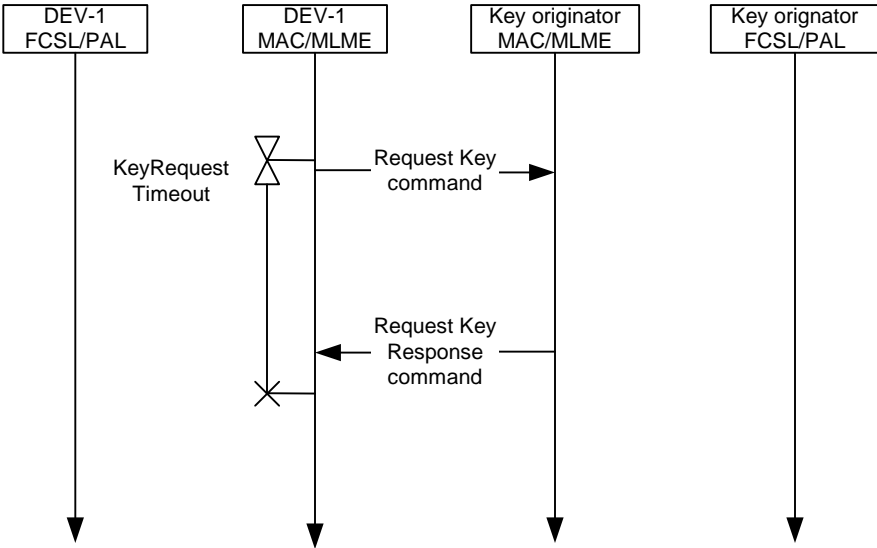
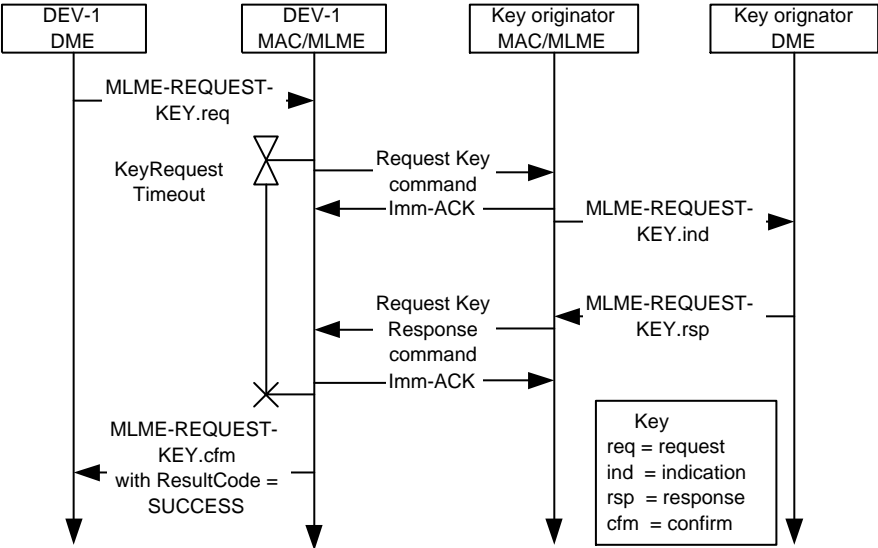


Figure 153—Message sequence chart for DEV key request

Figure 153—Message sequence chart for DEV key request

Current

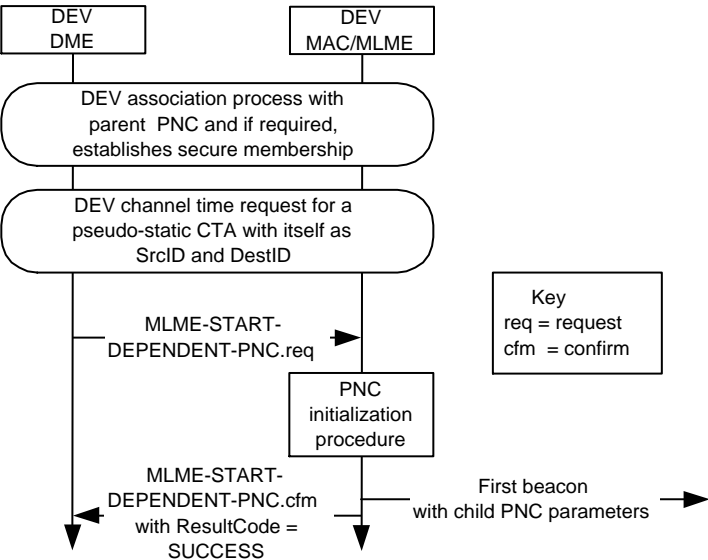


Figure 99 - MSC for creating a child piconet

Suggested

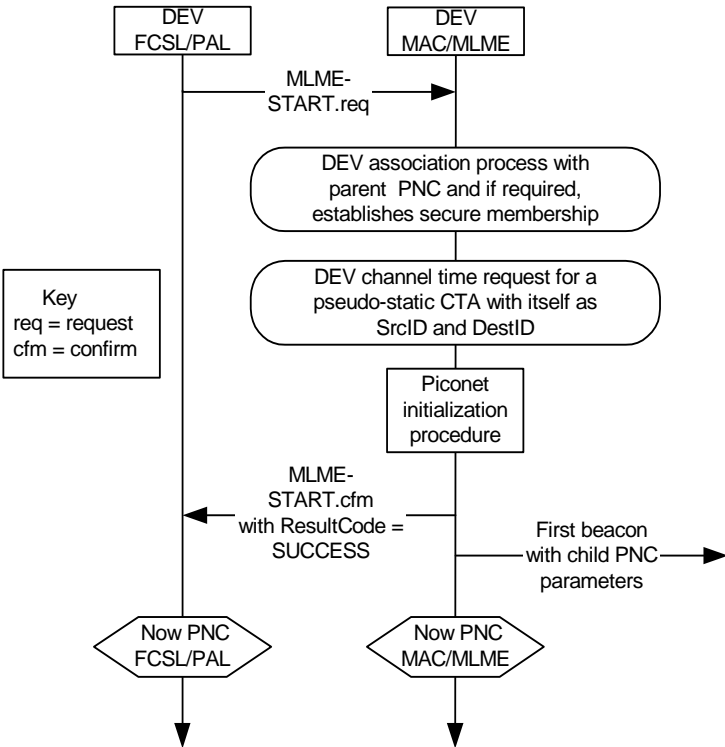
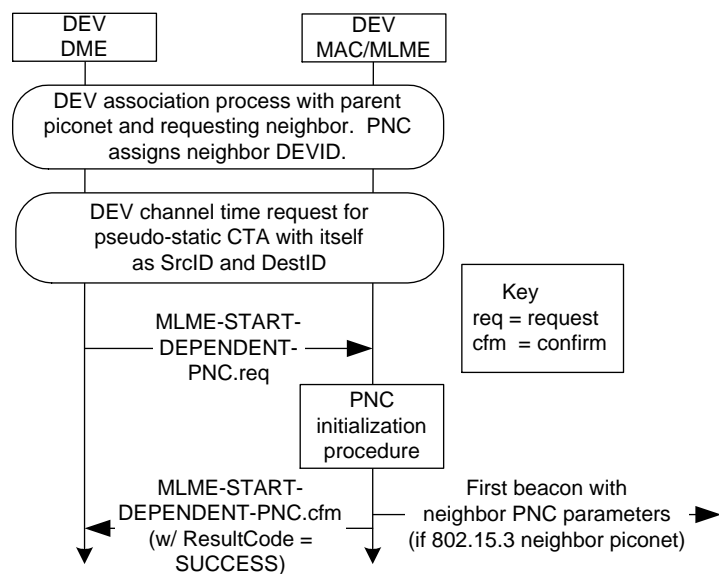
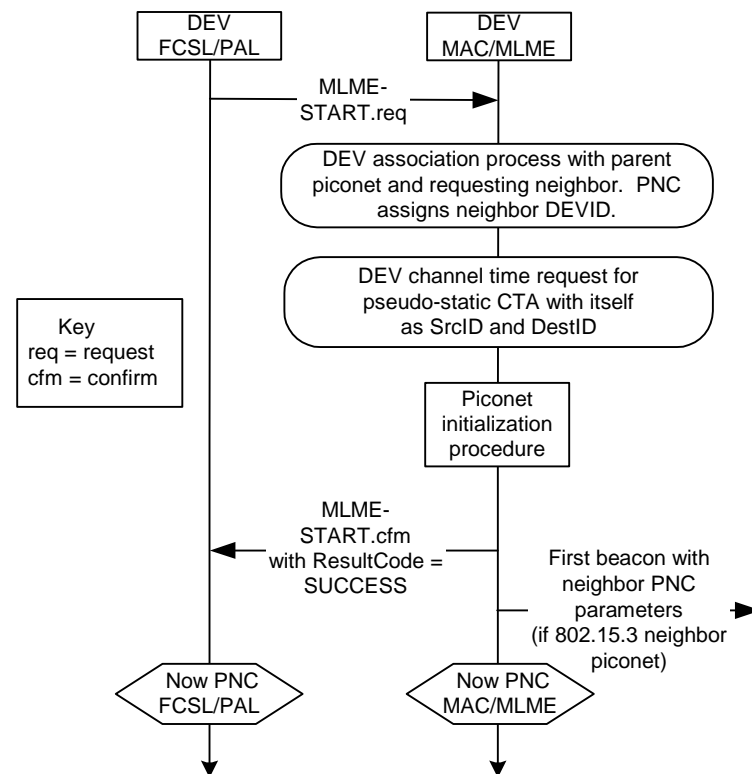


Figure 99 - MSC for creating a child piconet

Current**Figure 101 - MSC for initiating a neighbor piconet****Suggested****Figure 101 - MSC for initiating a neighbor piconet**

Current

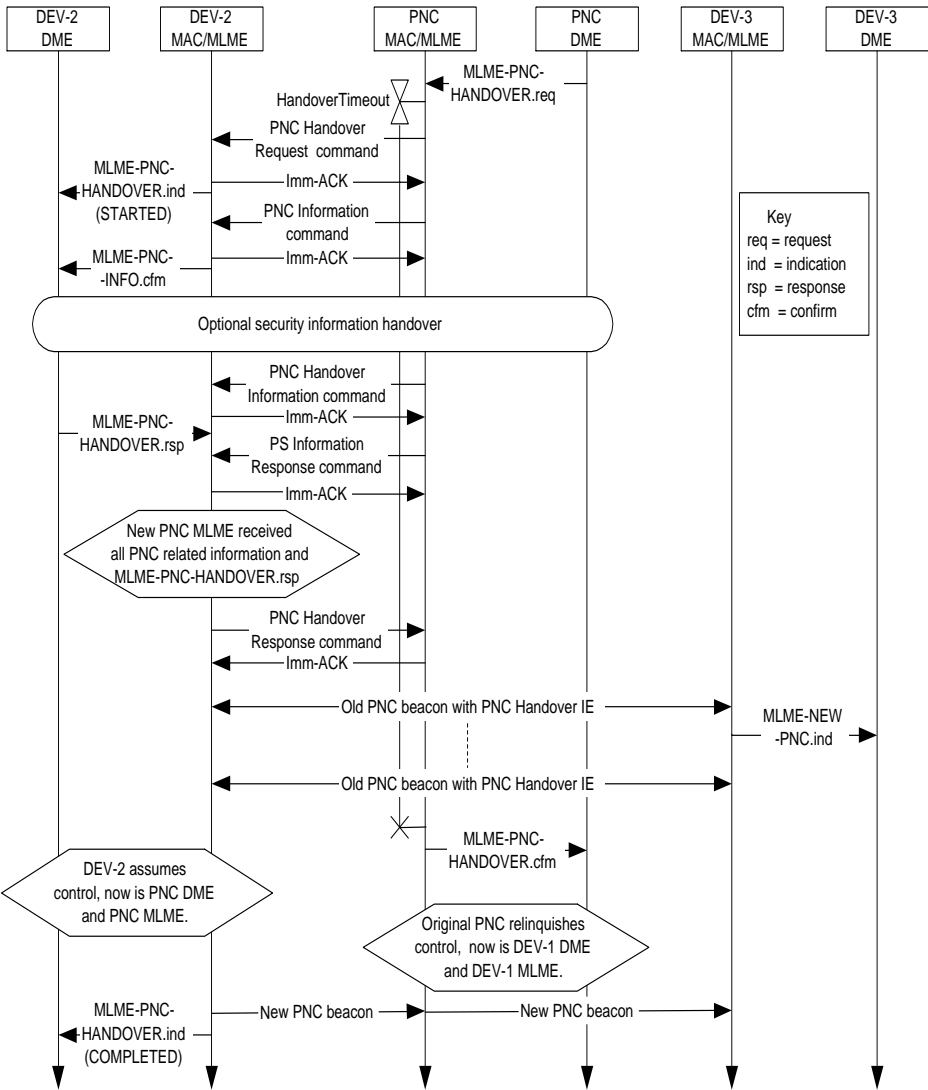


Figure 94 - PNC handover MSC

Suggested

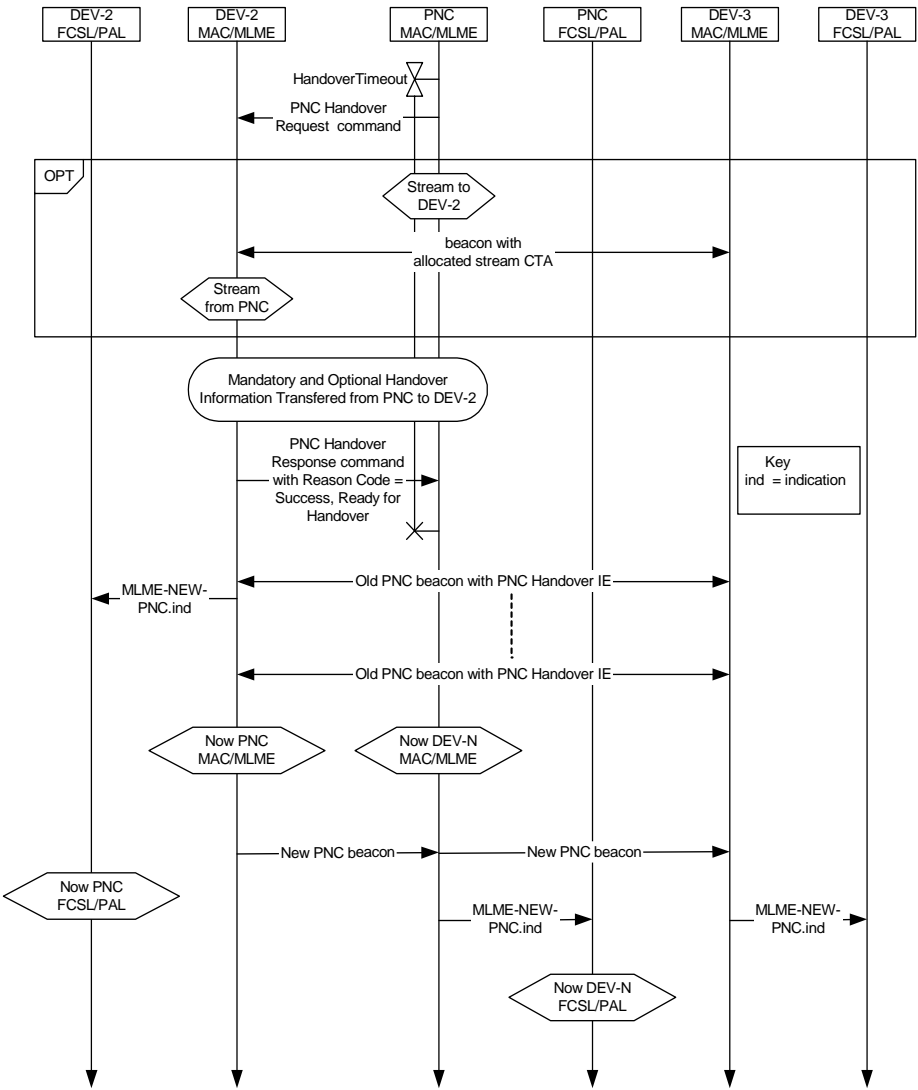


Figure 94 - PNC handover MSC

Current

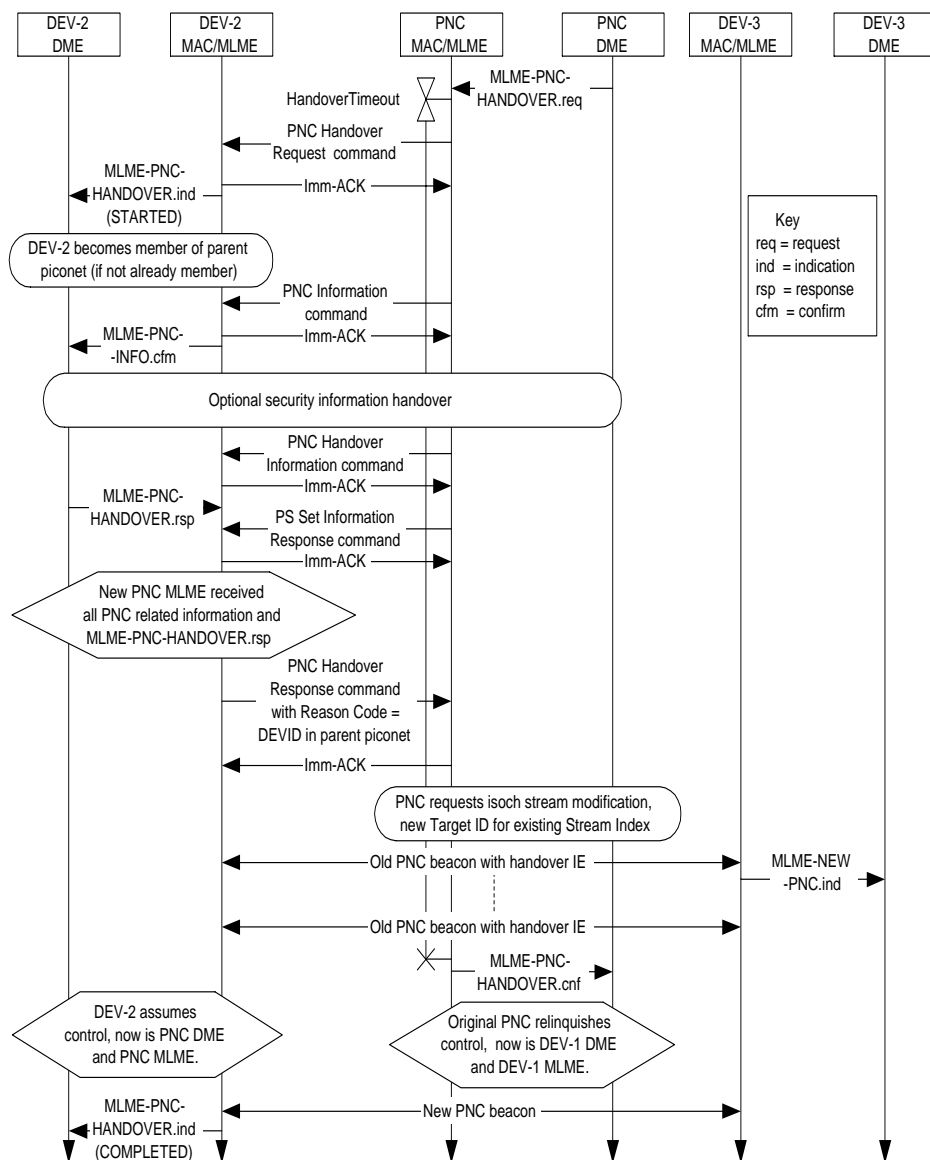


Figure 95 - Successful PNC handover in a dependent piconet

Suggested

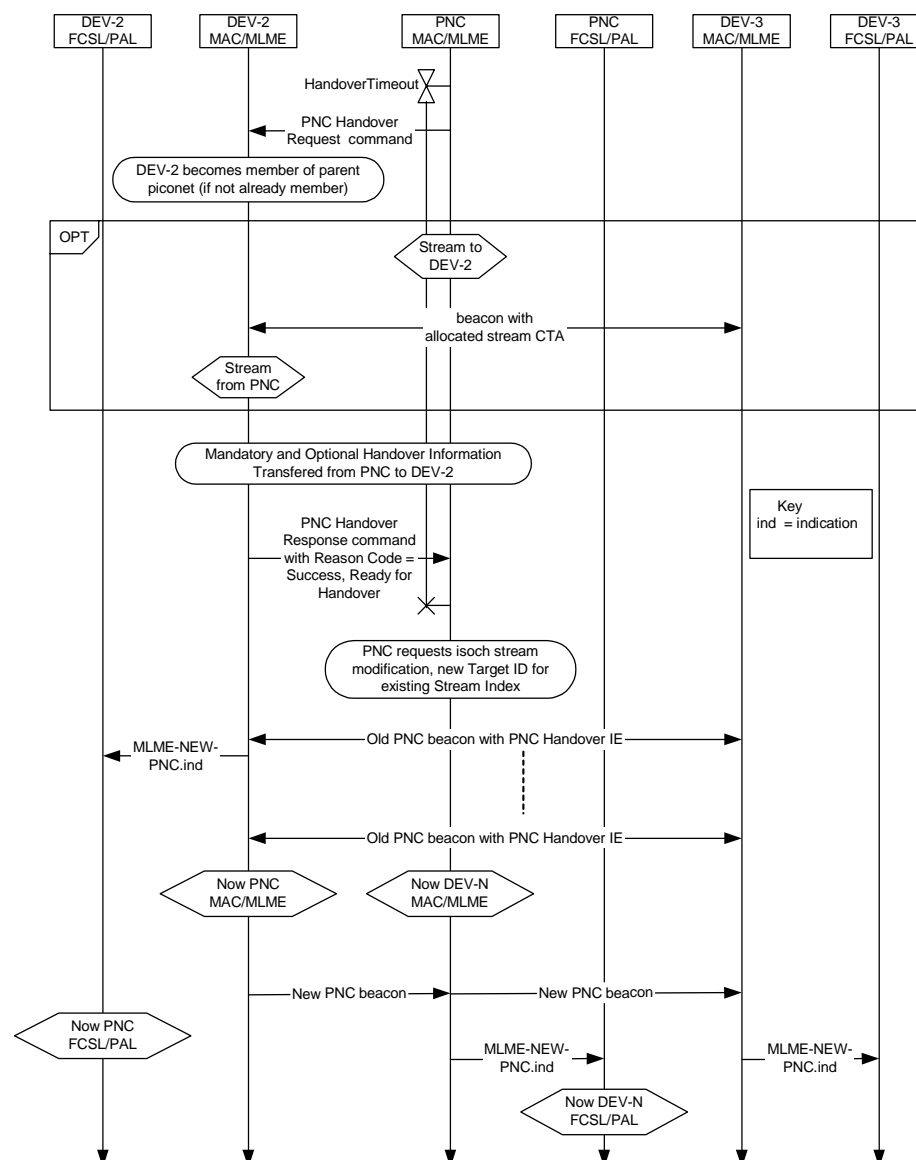


Figure 95 - Successful PNC handover in a dependent piconet

Current

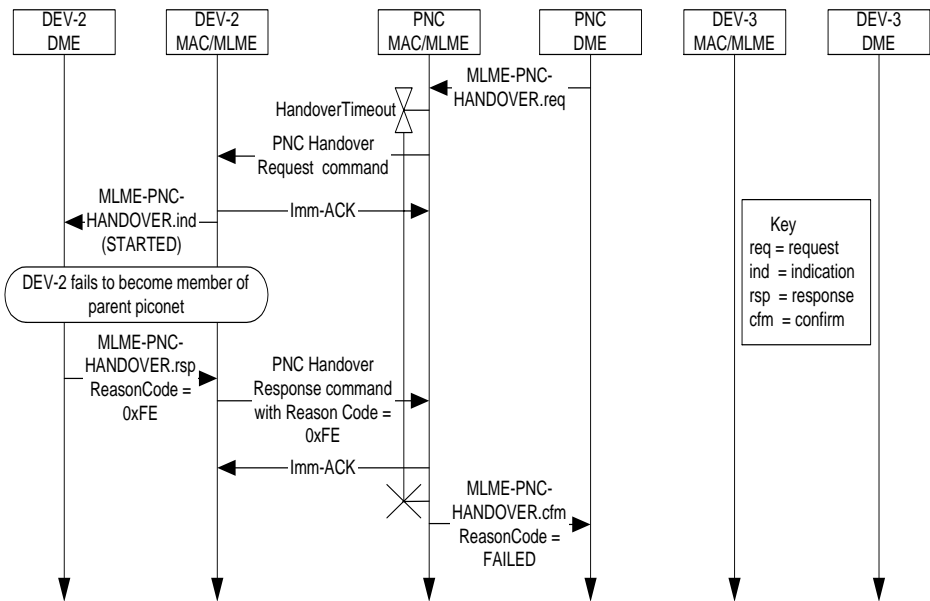


Figure 96 - Failed dependent PNC handover when target DEV fails to join parent piconet

Suggested

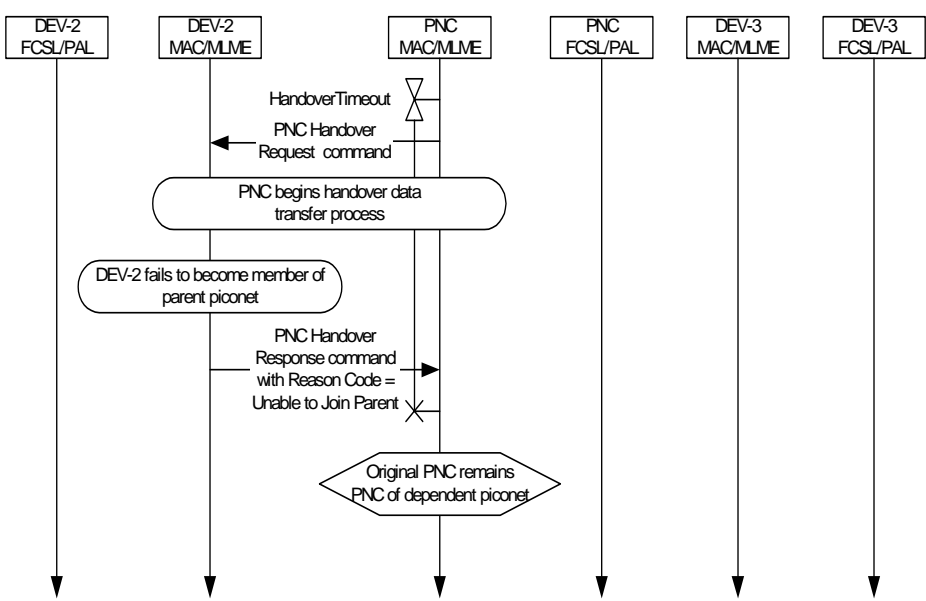


Figure 96 - Failed dependent PNC handover when target DEV fails to join parent piconet

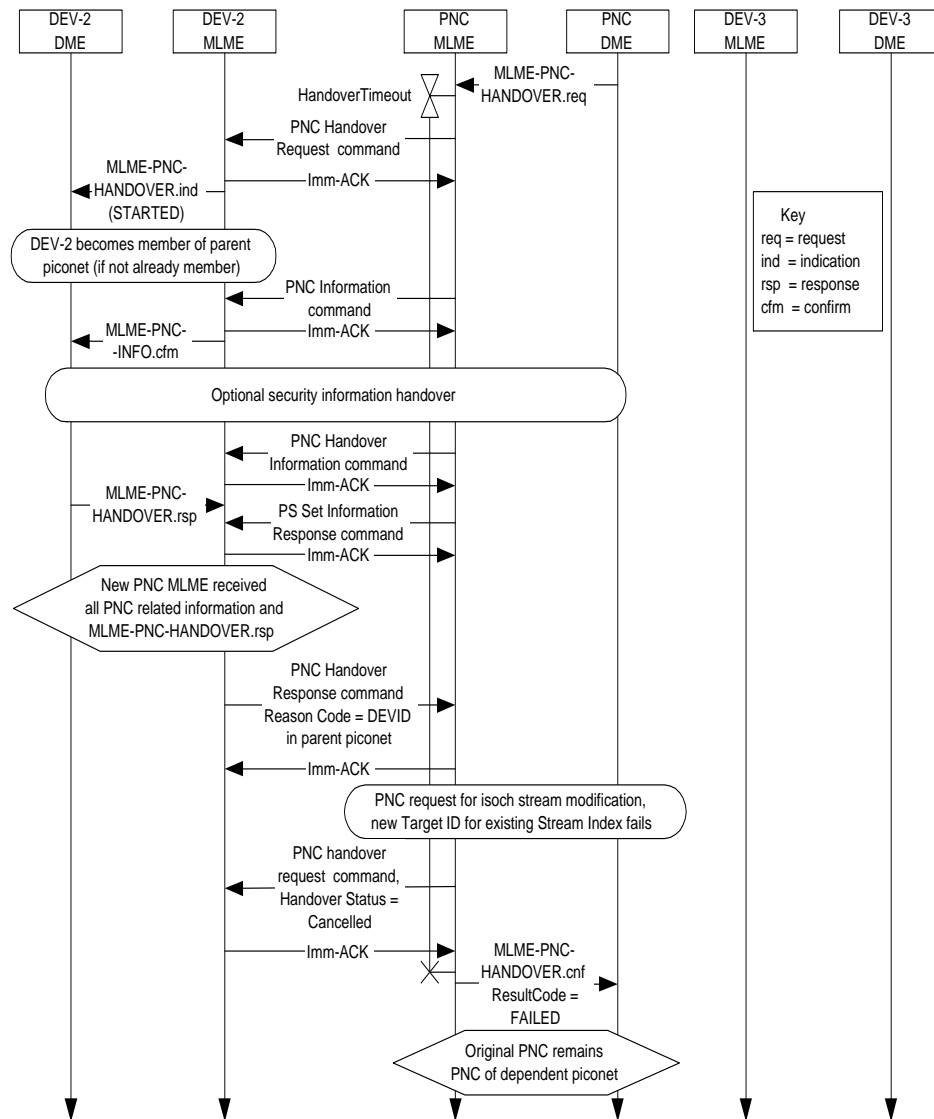
Current

Figure 97 - Failed dependent PNC handover when control for the dependent piconet CTA is handed over in the parent piconet

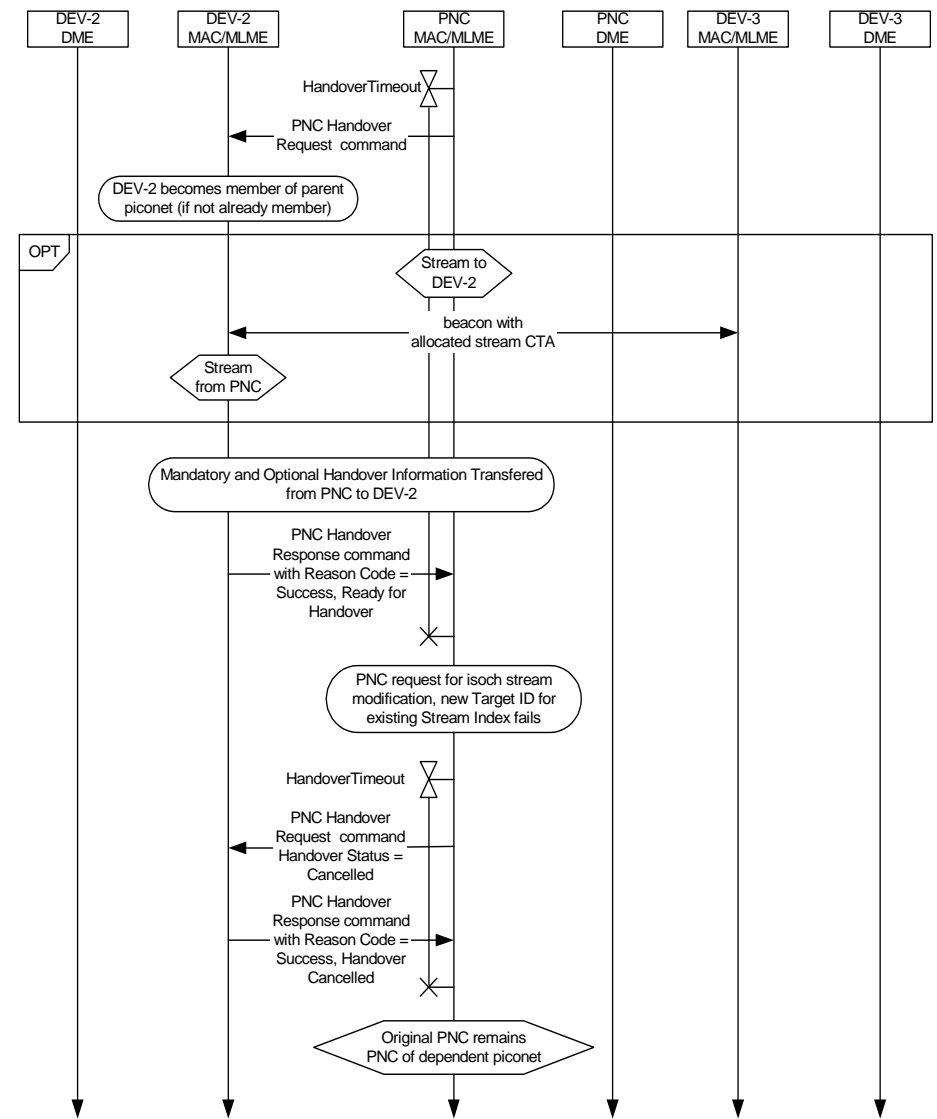
Suggested

Figure 97 - Failed dependent PNC handover when control for the dependent piconet CTA is handed over in the parent piconet

