

Proposal for hosting 802.16 interim session #49 in May 2007 in Portland, Oregon

IEEE 802.16 Presentation Submission Template (Rev. 8.3)

Document Number:

IEEE C802.16-06/010

Date Submitted:

2006-07-20

Source:

Jose Puthenkulam
Intel Corporation
2111 NE 25th Ave, JF3-336
Hillsboro, OR 97124

Voice: +1-503-264-6121
Fax: +1-503-264-454
E-mail: jose.p.puthenkulam@intel.com

Venue:

802.16 Session #44, San Diego, USA

Base Document:

None

Purpose:

Proposal for Hosting 802.16 interim session #49, in May 2007 in Portland, Oregon

Notice:

This document has been prepared to assist IEEE 802.16. It is offered as a basis for discussion and is not binding on the contributing individual(s) or organization(s). The material in this document is subject to change in form and content after further study. The contributor(s) reserve(s) the right to add, amend or withdraw material contained herein.

Release:

The contributor grants a free, irrevocable license to the IEEE to incorporate material contained in this contribution, and any modifications thereof, in the creation of an IEEE Standards publication; to copyright in the IEEE's name any IEEE Standards publication even though it may include portions of this contribution; and at the IEEE's sole discretion to permit others to reproduce in whole or in part the resulting IEEE Standards publication. The contributor also acknowledges and accepts that this contribution may be made public by IEEE 802.16.

IEEE 802.16 Patent Policy:

The contributor is familiar with the IEEE 802.16 Patent Policy and Procedures <<http://ieee802.org/16/ipr/patents/policy.html>>, including the statement "IEEE standards may include the known use of patent(s), including patent applications, provided the IEEE receives assurance from the patent holder or applicant with respect to patents essential for compliance with both mandatory and optional portions of the standard." Early disclosure to the Working Group of patent information that might be relevant to the standard is essential to reduce the possibility for delays in the development process and increase the likelihood that the draft publication will be approved for publication. Please notify the Chair <<mailto:chair@wirelessman.org>> as early as possible, in written or electronic form, if patented technology (or technology under patent application) might be incorporated into a draft standard being developed within the IEEE 802.16 Working Group. The Chair will disclose this notification via the IEEE 802.16 web site <<http://ieee802.org/16/ipr/patents/notices>>.

**Proposal for
802.16 Interim Session #49**

May ~~21-24~~, 2007
Portland, Oregon

Overview

- City of Portland Highlights
- Host Hotel Information
- Registration
- Traveling to and around Portland

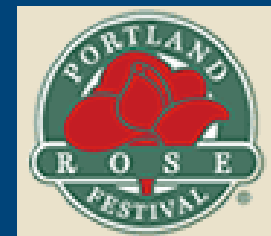


Portland Facts

- Part of the Pacific Northwest
- Located on the Columbia River near the northwest tip of the state of Oregon
- Businesses
 - Intel, OSDL (linux), Nike World Headquarters, HP, Sun, Tektronics



Portland Attractions



- Museums, galleries and art centers
 - Oregon Museum of Science & Industry (OMSI)
 - Portland Art Museum (PAM)
- Outdoors & Recreation
 - Parks & gardens throughout the region; including Washington Park, home of: Oregon Zoo, Hoyt Arboretum, Rose Gardens & Japanese Tea Gardens
 - Cycling & hiking trails
 - Golf courses
 - Nearby snow sports & fishing
 - Riverplace Esplanade
- Powell's Books (world's largest book store)
- Riverplace Esplanade, Waterfront



Portland Attractions, con't

- Spectator Sports

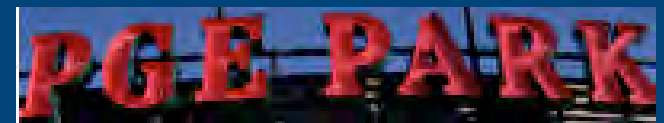
- Rose Garden arena, home to:

- NBA's Portland Trail Blazers
 - Pre-NHL Portland Winter Hawks hockey team
 - Portland LumberJax indoor lacrosse team



- Historic PGE Park, home to:

- Triple-A baseball's Portland Beavers, an affiliate of the San Diego Padres
 - A-League Portland Timbers' soccer



- Portland International Raceway

- Host location of Champ Car Grand Prix of Portland, the largest auto racing event in the Pacific Northwest

- Portland Meadows, a horse-racing track

Portland Dining

- Variety restaurants featuring local seafood
- Diverse ethnic cuisine
- Dining cruises on the Willamette and Columbia Rivers
- Numerous microbreweries & wineries throughout the region
- Portland Farmers' Market



Doubletree Hotel & Executive Meeting Center

- Hotel with 750 sleeping rooms (most in Portland)
- Features on property
 - Business Center
 - Concierge
 - Fitness Center
 - High Speed Internet Access
 - Pool
 - Restaurant & Room Service
- Perks
 - Only 9 miles from PDX
 - Located in near Lloyd Center, home to Portland's Largest Shopping Center
 - Walking distance to Rose Garden Arena & Memorial Coliseum
 - Part of the MAX "Fareless Square"

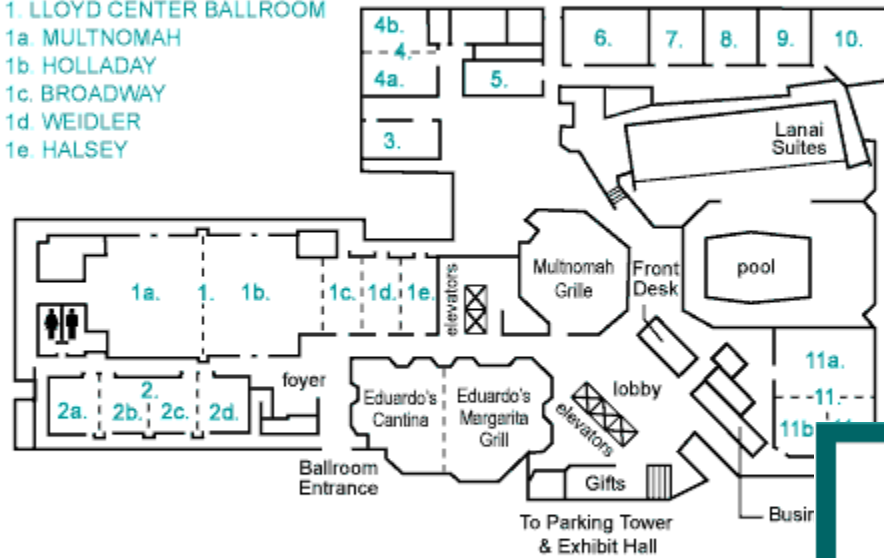


Meeting Rooms

- Meeting Facilities – 38,000 sq ft. total
 - We will reserve five meeting rooms
 - WLAN Connectivity throughout meeting spaces
- Meeting Room options, set Classroom-style
 - Cascade Ballroom - 260pp
 - Can be broken into four 70pp rooms
 - Lloyd Center Ballroom - 600pp
 - Can be broken into two 180pp rooms
 - Pacific Northwest Ballroom - 175pp
 - Can split to make one 70pp
 - Willamette Ballroom - 125pp

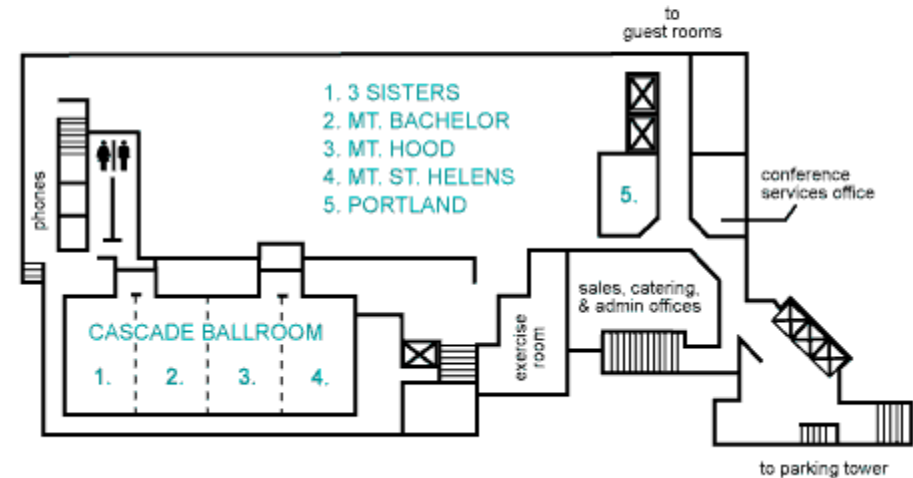
DOUBLETREE HOTEL & EXECUTIVE MEETING CENTER PORTLAND-LLOYD CENTER - FIRST LEVEL

1. LLOYD CENTER BALLROOM
1a. MULTNOMAH
1b. HOLLADAY
1c. BROADWAY
1d. WEIDLER
1e. HALSEY



2. WILLAMETTE BALLROOM
2a. HAWTHORNE
2b. SELLWOOD
2c. ROSS ISLAND
2d. MORRISON
3. WASHINGTON
4. ADAMS/JEFFERSON
- 4a. ADAMS
4b. JEFFERSON
5. HAMILTON
6. ROOSEVELT
7. MADISON
8. LINCOLN
9. GRANT
10. JACKSON
11. PACIFIC NORTHWEST
11a. OREGON
11b. ALASKA
11c. IDAHO

DOUBLETREE HOTEL & EXECUTIVE MEETING CENTER PORTLAND-LLOYD CENTER - SECOND LEVEL



1. 3 SISTERS
2. MT. BACHELOR
3. MT. HOOD
4. MT. ST. HELENS
5. PORTLAND

Registration/Rates

■ Registration Fees

- \$400 for early registration

- Cut-off ~~May 1, 2007~~

- Will include daily breakfast, lunch & Wednesday night reception

- \$450 for late registration, after ~~May 1, 2007~~

■ Hotel Rates

- Approx: \$110-150 per night

- Rates Available for nights of May ~~20-24, 2007~~

Getting to Portland

- Portland International Airport (PDX)
 - Direct connections from San Francisco (SFO), Seattle (SEA), Los Angeles (LAX), Chicago (OHR), Frankfurt (FRA), Singapore (SIN)
- Ground Transportation from PDX
 - Rental Cars, taxi cabs and personal shuttles all available from PDX
 - Parking at hotel - \$18/night
 - Around Portland – www.trimet.org
 - 44-mile MAX light rail system
 - Bus system

US Visa Information

- Intel will provide invitation letter
- Resources & Assistance
 - Visa Network
 - Event Management company (tbd)

Links

- Official City of Portland website - <http://www.portlandonline.com/>
- Portland Oregon Visitors Association - <http://www.pova.com/>
- Doubletree Hotel & Exec. Meeting Center - <http://doubletree.hilton.com/en/dt/hotels/index.jhtml?ctyhocn=RLLC-DT>

Thank You.
Hope to see you in Portland!