

Project	<b>IEEE 802.16 Broadband Wireless Access Working Group</b> < <a href="http://ieee802.org/16">http://ieee802.org/16</a> >
Title	Correction of Figure D.7
Date Submitted	<b>2006-11-04</b>
Source(s)	Yerang Hur <a href="mailto:yehur@posdata-usa.com">yehur@posdata-usa.com</a> POSDATA Co., Ltd.
Re:	Call for Maintenance Change Requests on IEEE Std 802.16
Abstract	This document suggests correcting Figure D.7 in Annex D.2 Sleep Mode MSCs.
Purpose	Adopt change requests on IEEE 802.16e-2005.
Notice	This document has been prepared to assist IEEE 802.16. It is offered as a basis for discussion and is not binding on the contributing individual(s) or organization(s). The material in this document is subject to change in form and content after further study. The contributor(s) reserve(s) the right to add, amend or withdraw material contained herein.
Release	The contributor grants a free, irrevocable license to the IEEE to incorporate material contained in this contribution, and any modifications thereof, in the creation of an IEEE Standards publication; to copyright in the IEEE's name any IEEE Standards publication even though it may include portions of this contribution; and at the IEEE's sole discretion to permit others to reproduce in whole or in part the resulting IEEE Standards publication. The contributor also acknowledges and accepts that this contribution may be made public by IEEE 802.16.
Patent Policy and Procedures	The contributor is familiar with the IEEE 802.16 Patent Policy and Procedures < <a href="http://ieee802.org/16/ipr/patents/policy.html">http://ieee802.org/16/ipr/patents/policy.html</a> >, including the statement "IEEE standards may include the known use of patent(s), including patent applications, provided the IEEE receives assurance from the patent holder or applicant with respect to patents essential for compliance with both mandatory and optional portions of the standard." Early disclosure to the Working Group of patent information that might be relevant to the standard is essential to reduce the possibility for delays in the development process and increase the likelihood that the draft publication will be approved for publication. Please notify the Chair < <a href="mailto:chair@wirelessman.org">mailto:chair@wirelessman.org</a> > as early as possible, in written or electronic form, if patented technology (or technology under patent application) might be incorporated into a draft standard being developed within the IEEE 802.16 Working Group. The Chair will disclose this notification via the IEEE 802.16 web site < <a href="http://ieee802.org/16/ipr/patents/notices">http://ieee802.org/16/ipr/patents/notices</a> >.

## Correction of Figure D.7

*Yerang Hur*  
*POSDATA Co., Ltd*

### 1. Problem Statement

These editorial corrections are required In Figure D.7 of Annex D.2.

- a. Min-sleeping interval and Max-sleeping interval are not defined in sleep mode operation. Those should be Initial-sleep window and Final-sleep window, respectively.
- b. Two notations L' and L1 are used for the Listening interval. It should be L1 in the figure.
- c. Description on the starting point of sleep window is not consistent with description in 6.3.21.2. The size of sleep window should be counted from the last expiration of listening window according to 6.3.21.2 and Figure 130a.

### 2. Suggested Remedy

[Adopt a revised figure in the next page as Figure D.7:]

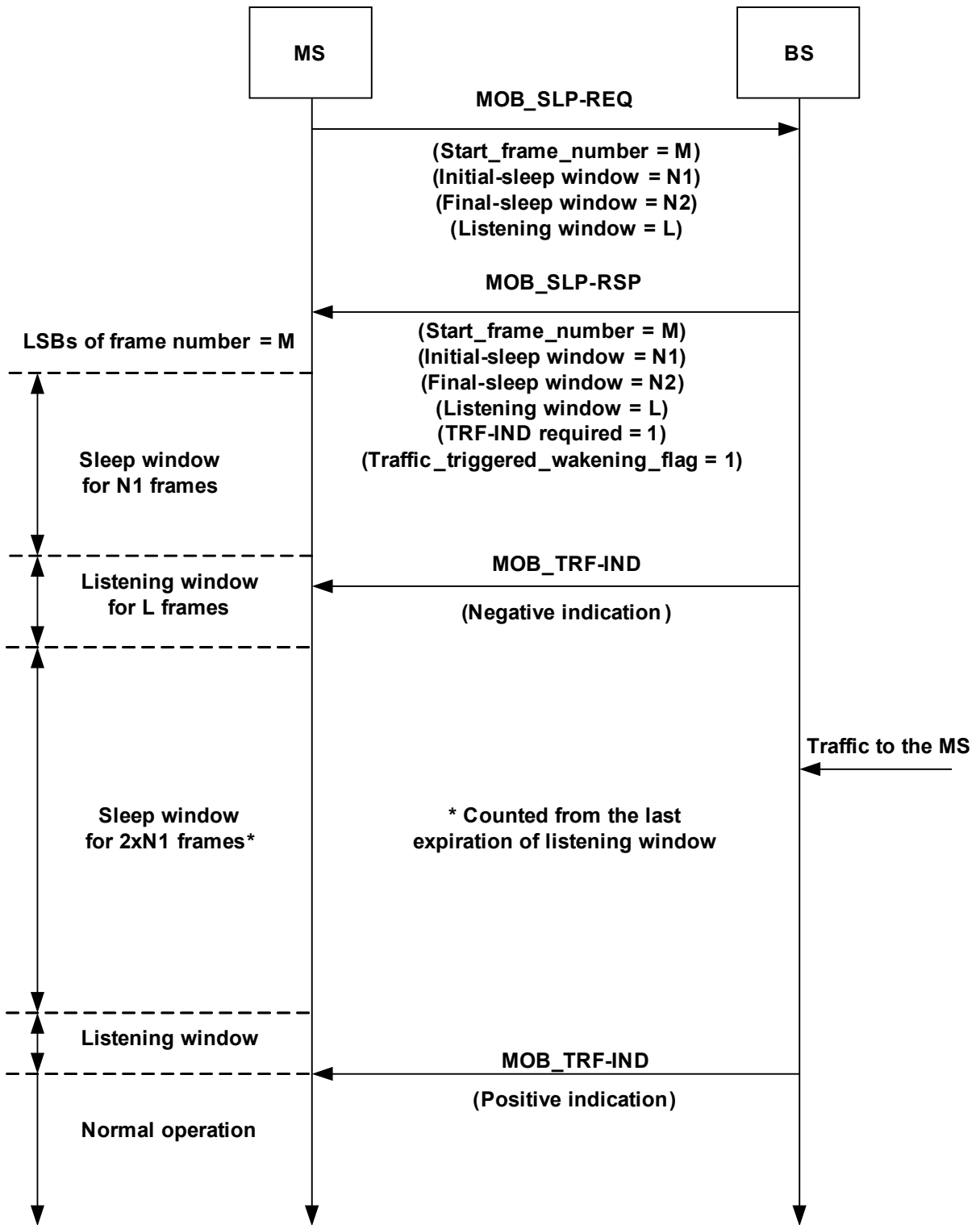


Figure D.7 Example sleep mode - MS initiated [for the case of TRF\\_IND required =1 and Traffic\\_triggering\\_wakening\\_flag = 1](#)