

Project	IEEE 802.16 Broadband Wireless Access Working Group < http://ieee802.org/16 >	
Title	MS Network Entry with RS	
Date Submitted	2006-11-07	
Source(s)	Kanchei (Ken) Loa, Yung-Ting Lee, Yi-Hsueh Tsai, Heng-Iang Hsu, Chih-Chiang Hsieh, Shiann-Tsong Sheu Institute for Information Industry 8F, No. 218, Sec. 2, Dunhua S. Rd., Taipei City 106, Taiwan, ROC. add co-author here	Voice: +886-2-2739-9616 Fax: +886-2-2378-2328 loa@nmi.iii.org.tw
Re:	IEEE 802.16j-06/027: "Call for Technical Proposals regarding IEEE Project P802.16j"	
Abstract	This document is to define Network Entry procedure in 6.3.9.16 of IEEE 802.16j-06/026 for mobile station (MS) to join Multihop Relay network.	
Purpose	Adopt the text proposal in this document	
Notice	This document has been prepared to assist IEEE 802.16. It is offered as a basis for discussion and is not binding on the contributing individual(s) or organization(s). The material in this document is subject to change in form and content after further study. The contributor(s) reserve(s) the right to add, amend or withdraw material contained herein.	
Release	The contributor grants a free, irrevocable license to the IEEE to incorporate material contained in this contribution, and any modifications thereof, in the creation of an IEEE Standards publication; to copyright in the IEEE's name any IEEE Standards publication even though it may include portions of this contribution; and at the IEEE's sole discretion to permit others to reproduce in whole or in part the resulting IEEE Standards publication. The contributor also acknowledges and accepts that this contribution may be made public by IEEE 802.16.	
Patent Policy and Procedures	The contributor is familiar with the IEEE 802.16 Patent Policy and Procedures < http://ieee802.org/16/ipr/patents/policy.html >, including the statement "IEEE standards may include the known use of patent(s), including patent applications, provided the IEEE receives assurance from the patent holder or applicant with respect to patents essential for compliance with both mandatory and optional portions of the standard." Early disclosure to the Working Group of patent information that might be relevant to the standard is essential to reduce the possibility for delays in the development process and increase the likelihood that the draft publication will be approved for publication. Please notify the Chair < mailto:chair@wirelessman.org > as early as possible, in written or electronic form, if patented technology (or technology under patent application) might be incorporated into a draft standard being developed within the IEEE 802.16 Working Group. The Chair will disclose this notification via the IEEE 802.16 web site < http://ieee802.org/16/ipr/patents/notices >.	

MS Network Entry with RS

Introduction

The purpose of this document is to define Network Entry procedure in 6.3.9.16 of IEEE 802.16j-06/026 for mobile station (MS) to join Multihop Relay network.

Explanation of Problem

There are two scenarios of MS Network Entry in a Multihop Relay system. In the scenario of MS entering the network by communicating with MR-BS directly, legacy network entry procedure as defined by IEEE 802.16e-2005 shall be applied. Whereas, the other scenario of MS entering the network via RS requires modified network entry procedure that is depicted in the following sections.

Design Objectives

1. The Network Entry procedure shall support MS to join Multihop Relay network without any modification on MS.
2. The Network Entry procedure should support MS to enter and register the Multihop Relay network via various RS modes.
3. The Network Entry procedure executed by the RS should be centralized controlled by the MR-BS.
4. The modifications to legacy Network Entry Procedure should be minimized.

Proposed Remedy

Figure 1 depicts the legacy procedure for initialization of MS. We propose the following modifications such that the procedures of Network Entry and Initialization defined in IEEE 802.16-2004 and IEEE 802.16e-2005 could be adopted for MS to enter and register to a Multihop Relay network via RS.

1. Relaying messages are defined to transport the information in the relay path required for completing the Network Entry procedures.
2. The phase of “Ranging & Automatic Adjustment” in Figure 1 should be modified to facilitate the Network Entry procedure with various RS modes.

Two examples are given in the following figures to illustrate the relaying messages and the modified procedure for performing ranging with various modes of RSs.

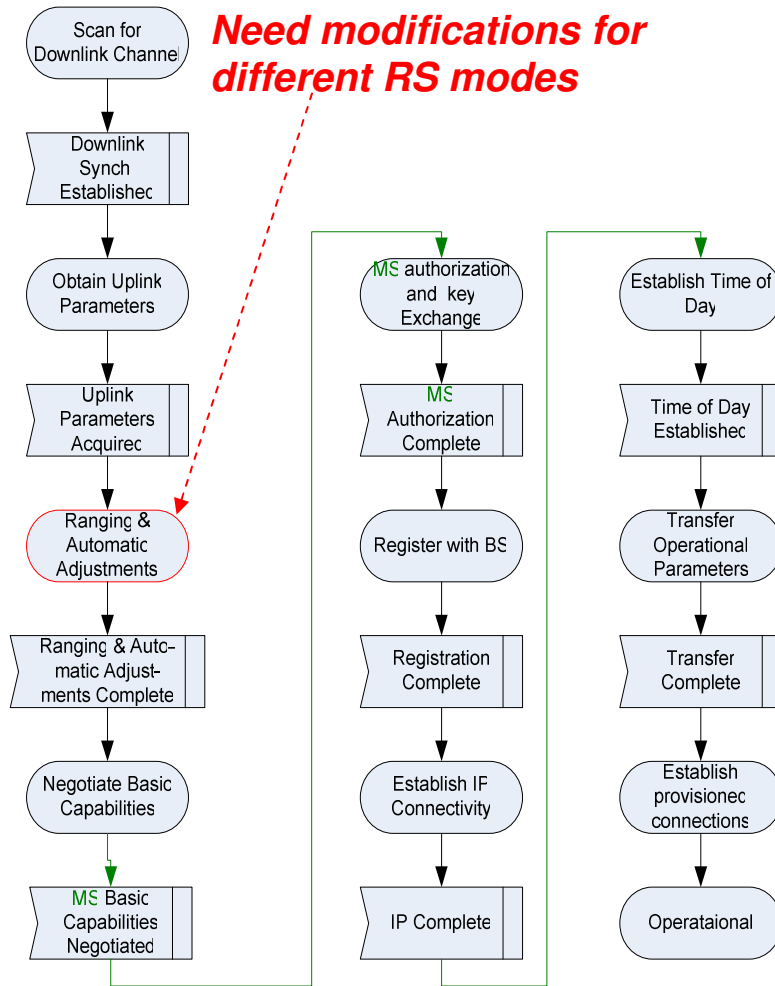


Figure 1: Network Entry Procedure for MS

Example 1: MS joins Multihop Relay network via RS. In this example, only RS₁ can decode messages from the MS and vice versa. Moreover, MR-BS assigns the MS to join the network via RS₁. Figure 2 below shows the procedure of performing initial ranging and basic capability negotiation.

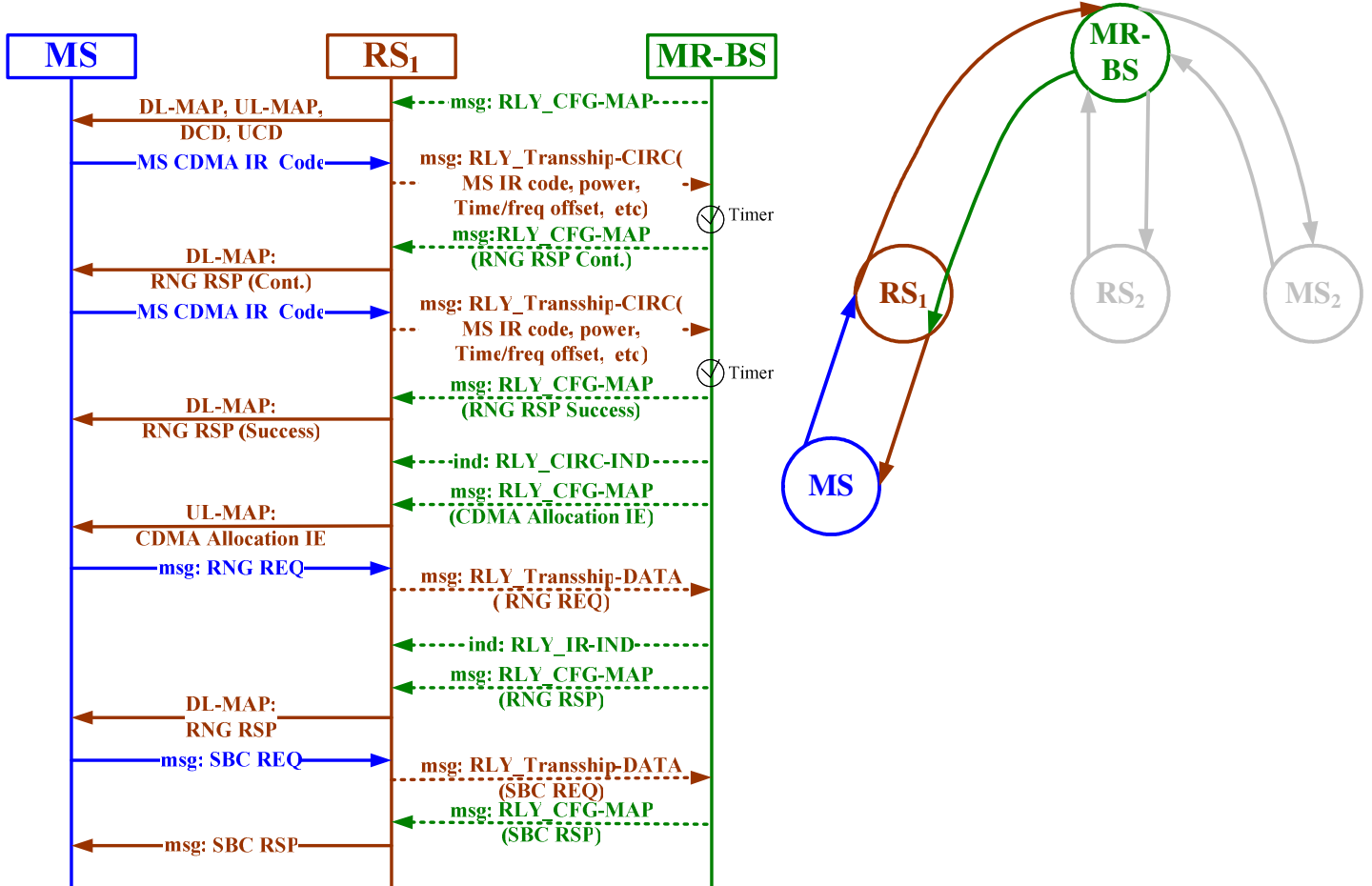


Figure 2: MS joins the Multihop Relay network via RS

Example 2: MS joins the Multihop Relay network via RS. In this example, both RS₁ and RS₂ can decode messages from the MS and vice versa. The MS can also decode messages from MR-BS. Moreover, MR-BS assigns the MS to join the network via RS₁. The procedures of performing initial ranging and basic capability negotiation is shown in Figure 3.

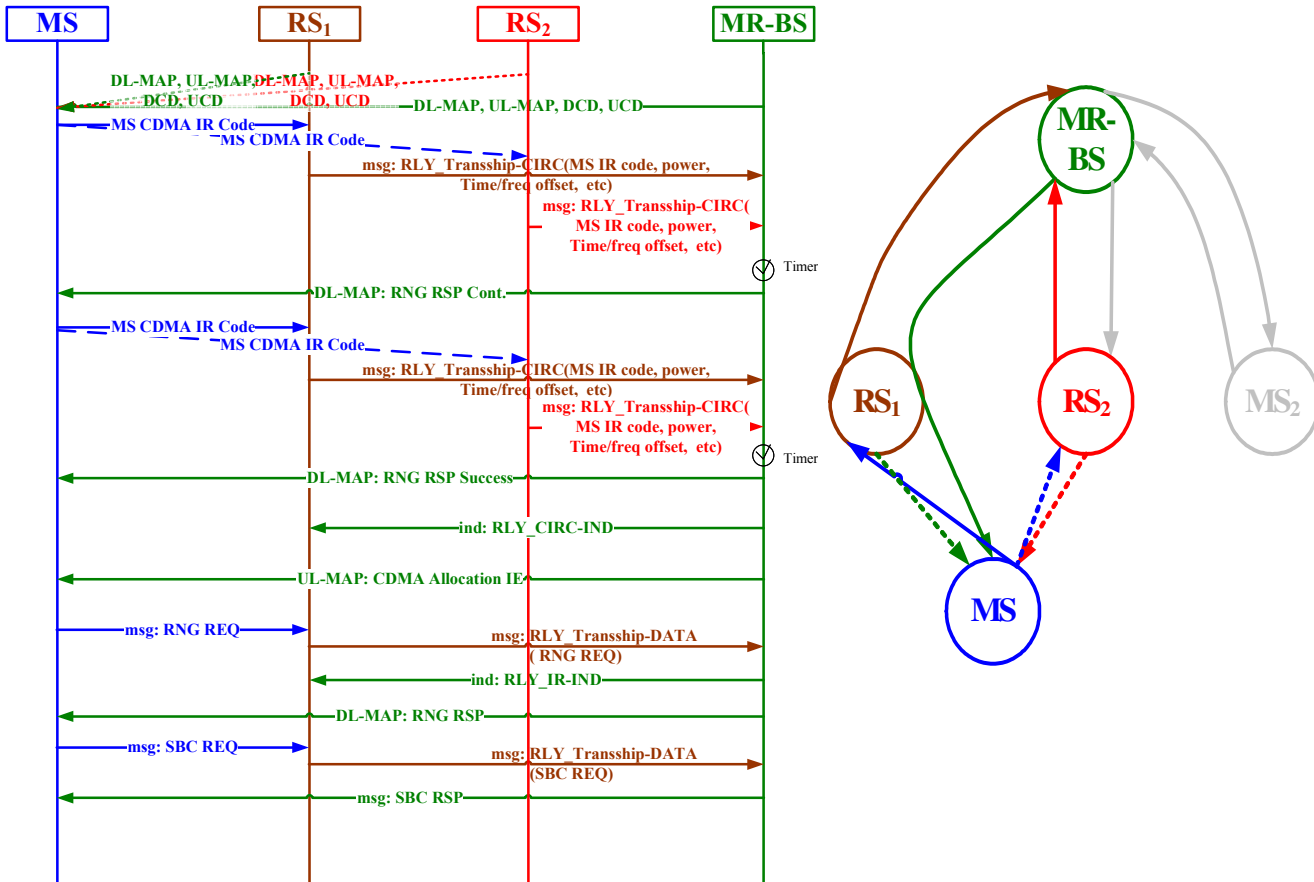


Figure 3: MS joins the Multihop Relay network via RS

Text Proposal

1. Adopt the following text in “6.3.9.16 Support for network entry and initialization in relay mode”
2. Insert the following text in “6.3.2.3 MAC management messages”.

6.3.9.16 Support for network entry and initialization in relay mode

6.3.9.16.1 Network entry and initialization for MS with RS

Multihop Relay system shall support applicable procedures for entering and registering an MS to the network via RS. The procedures for initialization of MS shall be the same as those defined in IEEE 802.16-2004 and IEEE 802.16e-2005 (see 6.3.9). During the initialization process, the MAC request and response messages defined in IEEE 802.16-2004 and IEEE 802.16e-2005 for Network Entry procedure shall be transmitted and received by the MS. Relaying messages between MR-BS and RS are required to transport the information in order to complete the initialization process.

6.3.9.16.1.1 MS performs initial ranging

1. The MR-BS and/or RS associated with the MR-BS shall broadcast downlink synchronization and uplink transmission parameters.
2. The MS, after acquiring downlink synchronization and uplink transmission parameters, shall choose randomly a Ranging Slot (with the use of a binary truncated exponent algorithm to avoid possible re-collisions) at the time to perform the ranging, then it chooses randomly a Ranging Code form the assigned Ranging Code Sets and sends a CDMA ranging request.
3. After an associated RS received the CDMA ranging request in access link, the RS should send RLY Transship-CIRC message to the serving MR-BS through the relay path, which includes the CDMA ranging request and measurements on the CDMA ranging request (e.g., time, power, and possibly frequency offset).
4. Upon receiving RLY Transship-CIRC message(s) from associated RS(s) and/or receiving the CDMA ranging request from the MS directly, the MR-BS should select one of associated RS or itself to broadcast the Ranging Response message. In case that MR-BS selects an RS to be the candidate RS, the MR-BS should send RLY CFG-MAP message to the candidate RS, which may include the associated adjustments for ranging. Afterward, the candidate RS shall broadcast a Ranging Response message. Otherwise, the MR-BS shall broadcast a Ranging Response message by itself. The Ranging Response message advertises the received Ranging Code as well as the ranging slot (OFDMA symbol number, subchannel, etc.) where the CDMA ranging code has been identified. This information is used by the MS that sent the CDMA ranging code to identify the Ranging Response message that corresponds to its ranging request. The Ranging Response message contains all the needed adjustment (e.g., time, power, and possibly frequency corrections) and a status notification.
5. Upon receiving a Ranging Response message with continue status, the MS shall continue the ranging process as done on the first entry with ranging codes randomly chosen from the Initial Ranging domain sent on the Periodic Ranging region.
6. If the MR-BS receives an RLY Transship-CIRC message that triggers an RNG-RSP message with success status, the MR-BS shall use RLY CIRC-IND message to notify the candidate RS that the RS Ranging Code is accepted and the MR-BS should send RLY CFG-MAP message (include the information of CDMA Allocation IE) to candidate RS. Afterward, the candidate RS broadcasts the CDMA Allocation IE to provide BW allocation such that the MS could send an RNG-REQ message.
7. If the MR-BS receives an initial-ranging CDMA code that results in sending an RNG-RSP message with success status, the MR-BS shall broadcast CDMA Allocation IE to provide BW allocation such that the MS could send an RNG-REQ message.
8. After the candidate RS received a RNG-REQ message in access link, the candidate RS shall transport the RNG-REQ message to the MR-BS through the relay path.
9. When the MR-BS received the transported RNG REQ message that triggers a RNG RSP message with success status, the MR-BS shall use RLY IR-IND message to notify the candidate RS that the RNG REQ message is accepted and then the MR-BS sends RLY CFG-MAP message (include the information of RNG RSP) to the candidate RS. Afterward, the candidate RS shall broadcast the RNG_RSP message to the MS.
10. Initial ranging process is completed after the MS receiving RNG-RSP message, which includes a valid basic CID (following a RNG-REQ transmission on a CDMA Allocation IE). If this RNG-RSP message includes 'continue' indication, the ranging process should be continued using the periodic ranging mechanisms.
11. The timeout required for the MS to wait for RNG-RSP message, following or not following CDMA Allocation IE, is defined by T3.
12. Using the OFDMA ranging mechanism, the periodic ranging timer is controlled by the MS, not the MR-BS

and/or associated RS(s).

6.3.2.3 MAC management messages

[Insert the following text into this section]

Add the columns into Table 14 as indicated.

Table 14—MAC Management messages

Type	Message name	Message description	Connection
69	<u>RLY_CFG-MAP</u>	<u>MR-BS configure associated RS for RS broadcasting</u>	<u>Broadcast/Multicast/Basic</u>
70	<u>RLY_Transship-CIRC</u>	<u>RS transport RS/MS CDMA initial ranging code to associated MR-BS</u>	<u>Basic</u>
71	<u>RLY_Transship-DATA</u>	<u>RS transport RS/MS data to associated MR-BS</u>	<u>Primary</u>
72	<u>RLY_CIRC-IND</u>	<u>MR-BS notify candidate RS to accept the new coming RS/MS CDMA initial ranging code</u>	<u>Basic</u>
73	<u>RLY_IR-IND</u>	<u>MR-BS notify candidate RS to accept the new coming RS/MS</u>	<u>Basic</u>

Relay station Configure Map (RLY_CFG-MAP) message

[TBD]

Relay station Transship CDMA Initial Ranging Code (RLY_Transship-CIRC) message

[TBD]

Relay station Transship Date (RLY_Transship-DATA) message

[TBD]

Relay station CDMA Initial Ranging Code Indication (RLY_CIRC-IND) message

[TBD]

Relay station Initial Ranging Indication (RLY_IR-IND) message

[TBD]

Appendix