

Deleted: 4

Deleted: 25

Deleted: 3

Project IEEE 802.16 Broadband Wireless Access Working Group <<http://ieee802.org/16>>

Title MMR Network distributed tunnel connection management

Date Submitted 2007-05-03

Deleted: 4

Deleted: 25

Source(s) G.Q. Wang, Wen Tong, Peiying Zhu Voice: 1-613-763-1315
 Hang Zhang, David Steer, Gamini [mailto:wentong@nortel.com]
 Senarath, Derek Yu, Mo-Han Fong [mailto:pyzhu@nortel.com]

Nortel
 3500 Carling Avenue
 Ottawa, Ontario K2H 8E9

Erwu Liu, Dongyao Wang, Gang Shen, Kaibin Zhang, Jimin Liu, Shan Jin
 Alcatel Lucent, R&I Shanghai, No.388, Ningqiao Road, Shanghai, P.R.C.
 Voice: 86-21-50551240-8194
 Fax: 96-21-50554554
 {Erwu.liu, Dongyao.Wang, Gang.A.Shen, Kaibin.Zhang, Jimin.Liu, Shan.Jin }
 @alcatel-sbell.com.cn
 Voice: +4971182132163
 Fax: +4971182132453
 Torsten Fahldieck [mailto:torsten.fahldieck@alcatel-lucent.de]
 Alcatel-Lucent R&I
 Holderaeckerstr.35, Stuttgart, Germany

[Chie Ming Chou](mailto:chieming@itri.org.tw) [mailto:chieming@itri.org.tw]

[ITRI](http://www.itri.org.tw)

[195,Sec. 4, Chung Hsing Rd.](http://www.itri.org.tw)
[Chutung, Hsinchu, Taiwan 310,](http://www.itri.org.tw)

R.O.C

Re:	A response to a Call for Technical Proposal, http://www.wirelessman.org/relay/docs/80216j-07_007r2.pdf
Abstract	This document provides text descriptions for routing and connection management sections defined in ToC of IEEE 802.16j-06/026r2
Purpose	To incorporate the proposed text into the P802.16j Baseline Document (IEEE 802.16j-06/026r1)
Notice	This document has been prepared to assist IEEE 802.16. It is offered as a basis for discussion and is not binding on the contributing individual(s) or organization(s). The material in this document is subject to change in form and content after further study. The contributor(s) reserve(s) the right to add, amend or withdraw material contained herein.
Release	The contributor grants a free, irrevocable license to the IEEE to incorporate material contained in this contribution, and any modifications thereof, in the creation of an IEEE Standards publication; to copyright in the IEEE's name any IEEE Standards publication even though it may include portions of this contribution; and at the IEEE's sole discretion to permit others to reproduce in whole or in part the resulting IEEE Standards publication. The contributor also acknowledges and accepts that this contribution may be made public by IEEE 802.16.
Patent Policy and Procedures	The contributor is familiar with the IEEE 802.16 Patent Policy and Procedures < http://ieee802.org/16/ipr/patents/policy.html >, including the statement "IEEE standards may include the known use of patent(s), including patent applications, provided the IEEE receives assurance from the patent holder or applicant with respect to patents essential for compliance with both mandatory and optional portions of the standard." Early disclosure to the Working Group of patent information that might be relevant to the standard is essential to reduce the possibility for delays in the development process and increase the likelihood that the draft publication will be approved for publication. Please notify the Chair < mailto:chair@wirelessman.org > as early as possible, in written or electronic form, if patented technology (or technology under patent application) might be incorporated into a draft standard being developed within the IEEE 802.16 Working Group. The Chair will disclose this notification via the IEEE 802.16 web site < http://ieee802.org/16/ipr/patents/notices >.

Deleted: 4

Deleted: 25

Deleted: 3

Formatted: Font: (Asian) PMingLiU, (Asian) Chinese Taiwan

MMR Network End-to-End Distributed Tunnel Connection Management

*G.Q. Wang, Wen Tong, Peiyong Zhu, Hang Zhang, Gamini Senarath,
David Steer, Derek Yu, Mo-Han Fong*

Nortel

Erwu Liu, Torsten Fahldieck, Dongyao Wang, Shen Gang, Kaibin Zhang, Jimin Liu, Shan Jin

Alcatel-Lucent

Chie Ming Chou

ITRI

Formatted: Font color: Black

Formatted: Font color: Black, English U.S.

Formatted: Font color: Black

1 Introduction

In MR network, topological information creation (i.e., adjacent radio link and derived tree structure) is subject to the constraints of radio resource utilization (e.g., radio resource allocation, channel/link status, transmission power, bandwidth allocation, and global traffic situation). In the other word, the current radio resource situation would determine how a mobile node should attach to MR and to whom it should attach to. Based on these constraints, the routing domain is formed and the routing path is selected.

Deleted: M

Deleted: M

In IEEE 802.16j-06/026r3 it has defined the concept of tunnel and related centralized tunnel connectivity management. The centralized tunnel management has the following characteristics:

- End-to-end tunnel creation is subject to the radio resource control in centralized topology schema

Deleted: 4

Deleted: 25

Deleted: 3

- In centralized routing schema, the tunnel scope is global in a single routing domain, where the end-to-end routing path is determined by BS.
- The routing path consists of all the nodes which are visible from BS's routing database

But in distributed MR network, some RS may involve radio resource allocation to the other nodes. For example, in baseline document 026r3, section 6.3.9.16.3.1, it defined RS group concept. A group of RSs can form a virtual group based on certain criteria. Within a virtual group, there is group leader RS which is responsible to allocate radio resource to other group members (i.e., leader RS transmits preamble/FCG/MAP to all other group members). Each RS group is assigned a multicast RSID as group ID, and BS will manage RS group collectively using the assigned group ID. This implies from BS perspective, it treats RS group as one routing object, and the details of the topology within the group may not be visible to BS. In the other word, the RS group provides a level of abstraction on radio resource and related topology, which is a black box to the BS. Hiding certain level information to BS is not only helpful to deal with the large-scale MR network; as well it is benefit for mobility efficiency. For example, from the definition, all the group members may share the same radio resource. When a roaming RSm moves around RS group radio coverage area and frequently changes its access point to the RS group, there is no need to trigger global handover procedure. The local mobility is handled by leader RS by selectively forwarding the data to the specific member RS to which the roaming RSm is attaching to. This scenario is applicable to relay situation where RSm is installed on the train or moving vehicle.

Deleted: M

Deleted: M

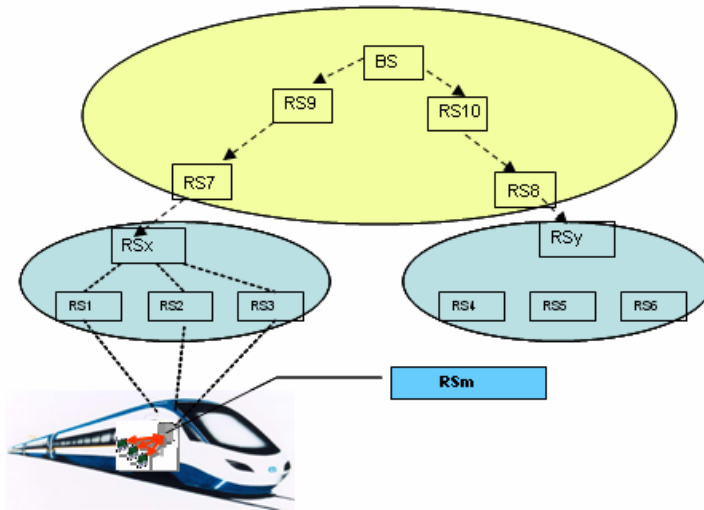


Figure 1. Multi-routing domain usage model

Figure 1 is an example showing tunnel management in a distributed relay system with multi-routing domain.

MR-BS is a group header of its MR-BS group and it also, configured two RS groups with leader RSx and RSy, and assigned RS group ID to each group. In RS group, the leader RS, saying RSx, would allocate radio resource to group members such as RS1, RS2 and RS3.

Deleted: MR-BS

Network entry: When RSm conducts network entry by selecting RS1, RS1 forwards RNG-REQ to RSx following the typical procedure. When RSx receives RNG-REQ, it would forward RNG-REQ to BS by telling BS that RSm is attaching to RSx (i.e., using RSx's basic CID). BS then would create a path (BS, RS7, RSx, RSm) in its routing table. Note although physically RSm is attaching to RS1, but this link is not visible to BS.

Deleted: req

Deleted: req

Tunnel creation: When BS uses DSx to signaling a tunnel to RSm, it would select path (BS, RS7, RSx, RSm) and specify RS7 basic CID as destination in MAC header. When DSx goes to the boundary of MR-BS group,

Deleted: 4

Deleted: 25

Deleted: 3

RS7 may encapsulate a relay MAC header with the Basic CID of RSx and transmit it to RSx. Once RSx receive this MPDU, the RSx will de-encapsulate relay MAC header with its Basic CID and update the path as (RSx, RS1, RSm) for the tunnel creation. The tunnel CID may not be the same when the tunnel goes across the boundary (this is an implementation issue). If the tunnel CID is local to routing domains, then RSx shall allocate a new tunnel CID within its own domain, and create a mapping between the original tunnel CID (used in MR-BS group) and the new tunnel CID (used in RSx group).

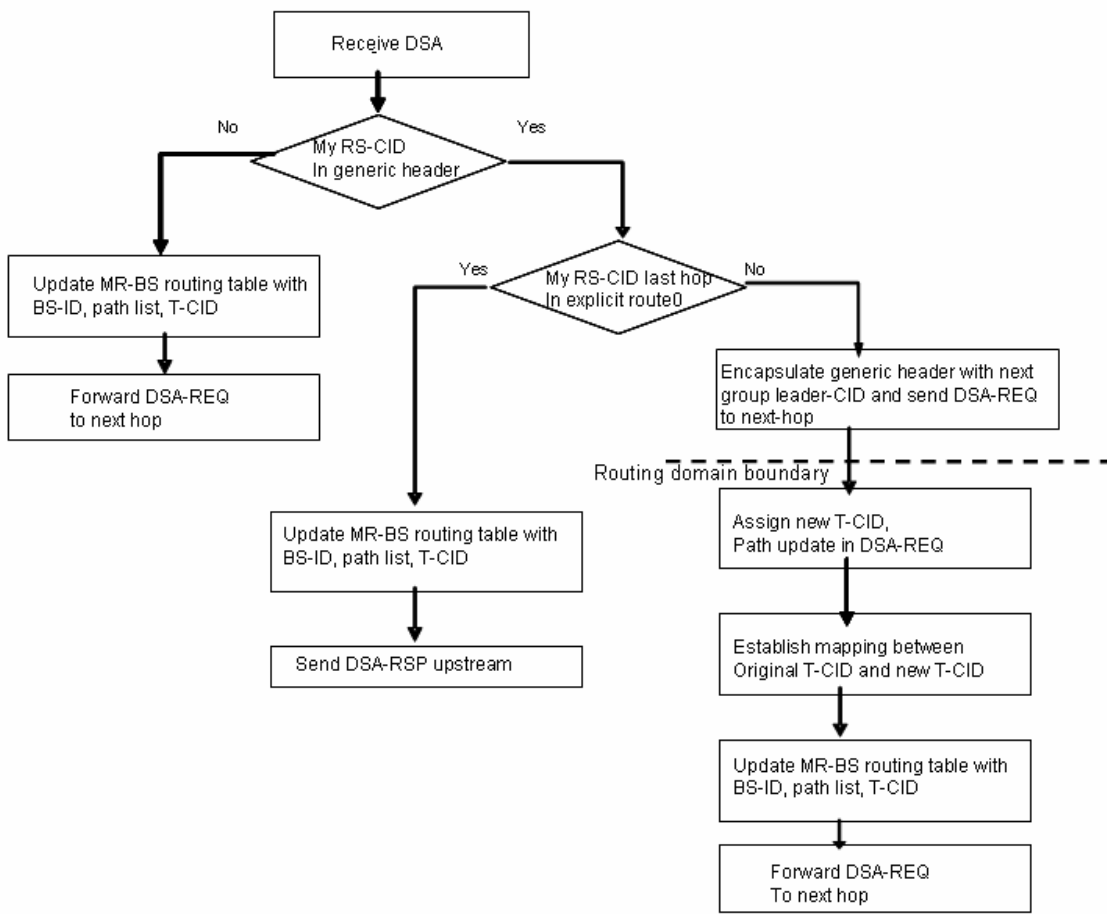
Deleted: DSx goes across the routing domain boundary

Deleted: BS,

Data forwarding: In distributed tunnel case, the data forwarding is same as centralized tunnel system. Except that if the tunnel CIDs are different, CID swapping in the MAC header needs to be done at the boundary of routing domains.

Figure 2 shows the working flow behavior at each RS which specifies how constraint-based routing is used to support end-to-end distribute connection management.

Deleted: 4
Deleted: 25
Deleted: 3



Formatted: Normal, Left

Figure 2. Constraint-based DSA signaling call flow for sectionized connection creation

Deleted: tunnel

- Deleted: 4
- Deleted: 25
- Deleted: 3

2. Proposed text changes

+++++ start text proposal +++++

[Insert the followings after the end of section 6.3.3.8.1:]

6.3.3.8.1.2 Distributed tunnel management

Sectionized connection in distributed routing domain

In distributed routing control schema, there exist multiple routing domains. In each routing domain, the routing controller either resides on MR-BS, or the RS cell head. In distributed manner, the routing path within each cell is determined individually by the routing controller with their own radio resource allocation and localized topology knowledge. In this case, the tunnel CID may only have local sense for connections within the defined domain. The end-to-end connection from MR-BS to the designated RS is represented by the concatenation of localized tunnel CIDs and Basic CIDs, along the given path. When a data burst received by the boundary RS (i.e., egress RS in tunnel connection) which isn't the last hop in explicit route, RS may encapsulate the R-MAC header with Basic CID of next-boundary RS and forward it to next routing domain. If the original tunnel CID is locally scoped within the routing domain, then the next boundary RS (i.e., RS cell head) shall replace the original tunnel CID by a new tunnel CID. This operation is called "CID swapping".

- Deleted: T
- Inserted: Then
- Deleted: travels across the boundary of the routing domains, t
- Deleted: tunnel
- Deleted: tunnel

Constraint-based Routing for sectionized connection

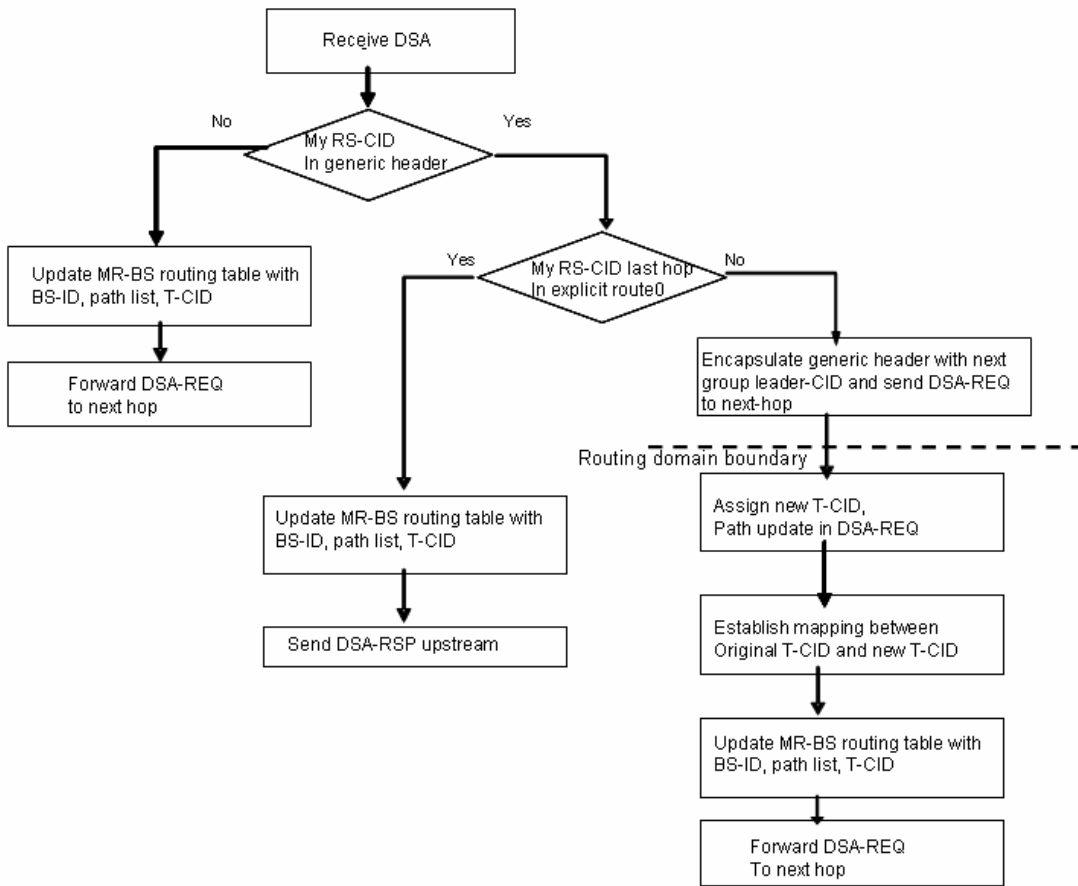
Similar to globalize tunnel management, constraint-based routing is also used to support sectionized tunnel connections within distributed routing domains. In distributed case, the explicit route and associated path ID are specified in signaling message such as DSx (x represents Add, Change or Delete) by MR-BS. Different from globalize tunnel creation, in the initial explicit route, the MR-BS only specifies its local topology (the MR-BS cell boundary destination node), next cell routing domain boundary node and the destination node. In DSA message header, the initial tunnel-end-point RS CID is the next RS cell head and the body contains the transport tunnel CID (global or local). Upon received DSA, the RS cell head should check whether itself is the targeted destination node (by examining the explicit route), and should it create a new sectionized tunnel for the rest of the relay path. If it needs, the RS cell head should replace the next tunnel-end-point RS CID in generic MAC header, assign the new transport tunnel CID in DSA body, and update the explicit route accordingly. RS cell head may also create a mapping relationship between the original transport tunnel CID and the newly assigned

transport tunnel CID. This procedure will be repeated cell-by-cell until the destination access RS in the explicit route is reached.

Forwarding by sectionized tunnel CID

If the tunnel CID is global, the data forwarding process is same as centralized tunnel management. In the local CID case, the tunnel CID in the header may be changed once the data packet goes across the routing boundary. The determination of the new CID and the type of forwarding action is done by a forwarding table lookup. Similar to the centralized case the tunnel end point should determine the mapping/aggregation between tunnel CID and per-service-flow CID.

Deleted: 4
Deleted: 25
Deleted: 3



Deleted: <sp>

Figure 2. Constraint-based DSA signaling call flow for sectionized connection creation

- Deleted: 4
- Deleted: 25
- Deleted: 3

+++++++ *End of text proposal* ++++++