

Project	IEEE 802.16 Broadband Wireless Access Working Group < http://ieee802.org/16 >	
Title	Flow charts for MS Initial Ranging with Non-transparent RS (Centralized)	
Date Submitted	2007-07-05	
Source(s)	Kanchei (Ken) Loa, Yi-Hsueh Tsai, Yung-Ting Lee, Hua-Chiang Yin, Shiann-Tsong Sheu, Youn-Tai Lee, Institute for Information Industry 8F, No. 218, Sec. 2, Dunhua S. Rd., Taipei City 106, Taiwan	Voice: +886-2-27399616 Fax: +886-2-23782328 loa@nmi.iii.org.tw
Re:	IEEE 802.16j-07/019: "Call for Technical Comments Regarding IEEE Project 802.16j"	
Abstract	This contribution proposes flow charts for MS Initial Ranging with Non-transparent RS	
Purpose	Text proposal for 802.16j Baseline Document.	
Notice	<i>This document does not represent the agreed views of the IEEE 802.16 Working Group or any of its subgroups. It represents only the views of the participants listed in the "Source(s)" field above. It is offered as a basis for discussion. It is not binding on the contributor(s), who reserve(s) the right to add, amend or withdraw material contained herein.</i>	
Release	The contributor grants a free, irrevocable license to the IEEE to incorporate material contained in this contribution, and any modifications thereof, in the creation of an IEEE Standards publication; to copyright in the IEEE's name any IEEE Standards publication even though it may include portions of this contribution; and at the IEEE's sole discretion to permit others to reproduce in whole or in part the resulting IEEE Standards publication. The contributor also acknowledges and accepts that this contribution may be made public by IEEE 802.16.	
Patent Policy	The contributor is familiar with the IEEE-SA Patent Policy and Procedures: < http://standards.ieee.org/guides/bylaws/sect6-7.html#6 > and < http://standards.ieee.org/guides/opman/sect6.html#6.3 >. Further information is located at < http://standards.ieee.org/board/pat/pat-material.html > and < http://standards.ieee.org/board/pat >.	

Flow charts for MS Initial Ranging with Non-transparent RS

Kanchei (Ken) Loa, Yi-Hsueh Tsai, Yung-Ting Lee,
Hua-Chiang Yin, Shiann-Tsong Sheu, Youn-Tai Lee
Institute for Information Industry (III)

Introduction

According to Comment # 1125 of 802.16j-07_014r4.cmt, this contribution provides the flow charts for MS initial ranging with non-transparent RS in section 6.3.9.16.2.1 of baseline working document IEEE 802.16j-07/026r4. These flow charts are consistent with P802.16-2004 Cor2/D4. In order to facilitate the incorporation of this proposal into IEEE 802.16j standard, specific changes to the baseline working document IEEE 802.16j-06/026r4 are listed below.

Moreover, the flow charts of MS network entry procedures in Corrigenda 2/Draft 4 are provided in figure 1 for reference.

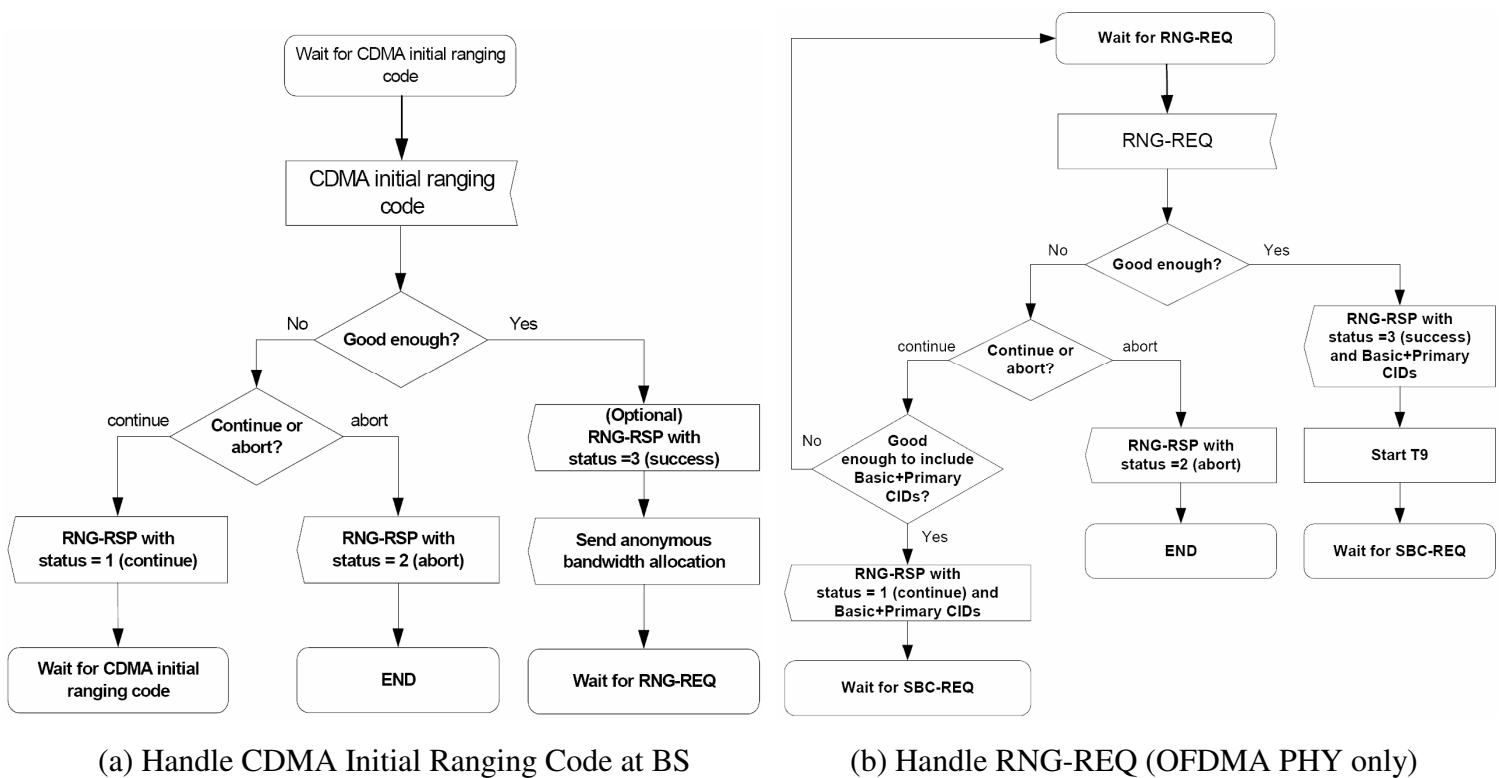


Figure 1 MS network entry procedures

Text Proposal

6.3.9.16.2 MS network entry procedures in non-transparent RS systems

6.3.9.16.2.1 Non-transparent RS with Centralized scheduling

[change subclause 6.3.9.16.2.1 in line 35 of page 83 as following index:]

The message sequences chart (Table ~~xxx-1~~199b) and flow charts (Figure 95e, Figure 95f, Figure 95g, and

Figure 95h) on the following pages defines the ranging and adjustment process that shall be followed by compliant RSs and MR-BSs. For CDMA ranging process between RS and MS, these details can be found in 6.3.10.3.

[Insert the following figures at the end of subclause 6.3.9.16.2.1:]

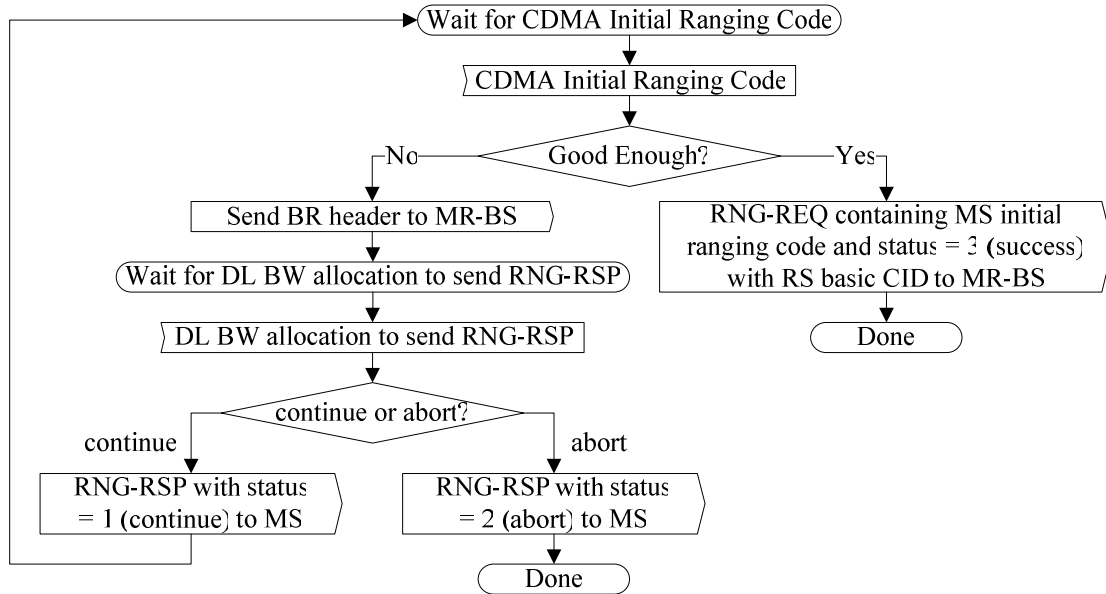


Figure 95e Handle CDMA Initial Ranging Code at Non-transparent RS (Part 1)

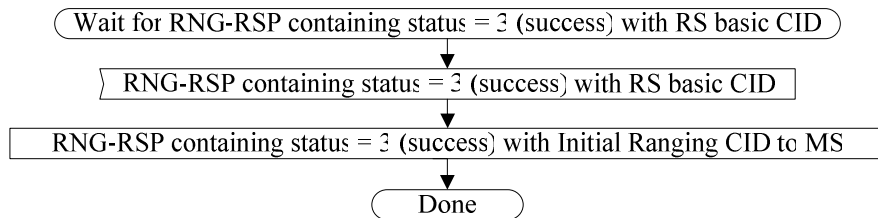


Figure 95e Handle CDMA Initial Ranging Code at Non-transparent RS (Part 2)

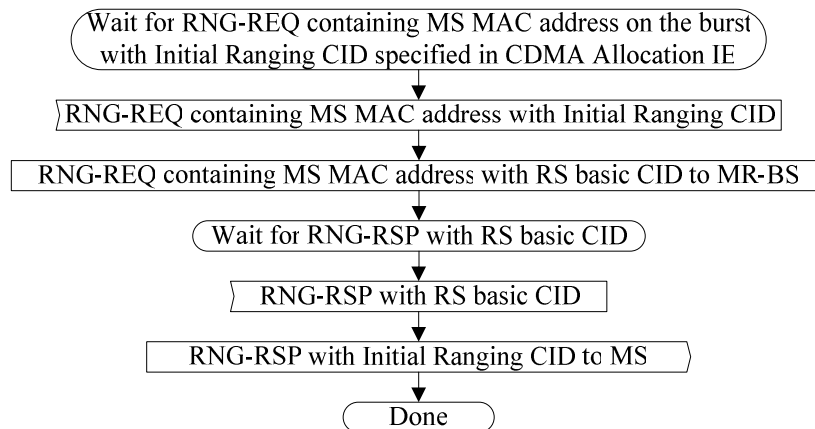


Figure 95f Handle RNG-REQ at Non-transparent RS

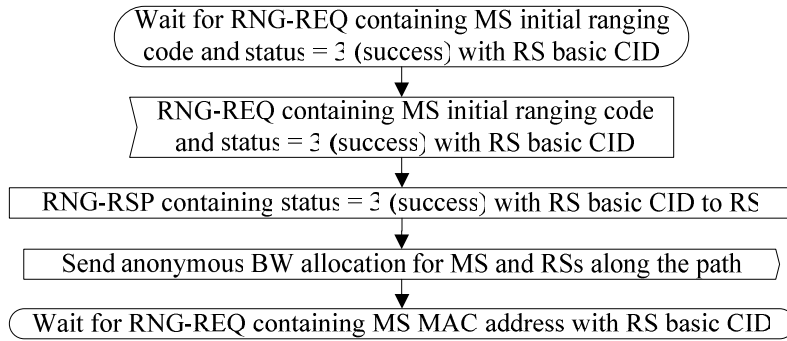


Figure 95g Handle CDMA Initial Ranging in non-transparent mode at MR-BS

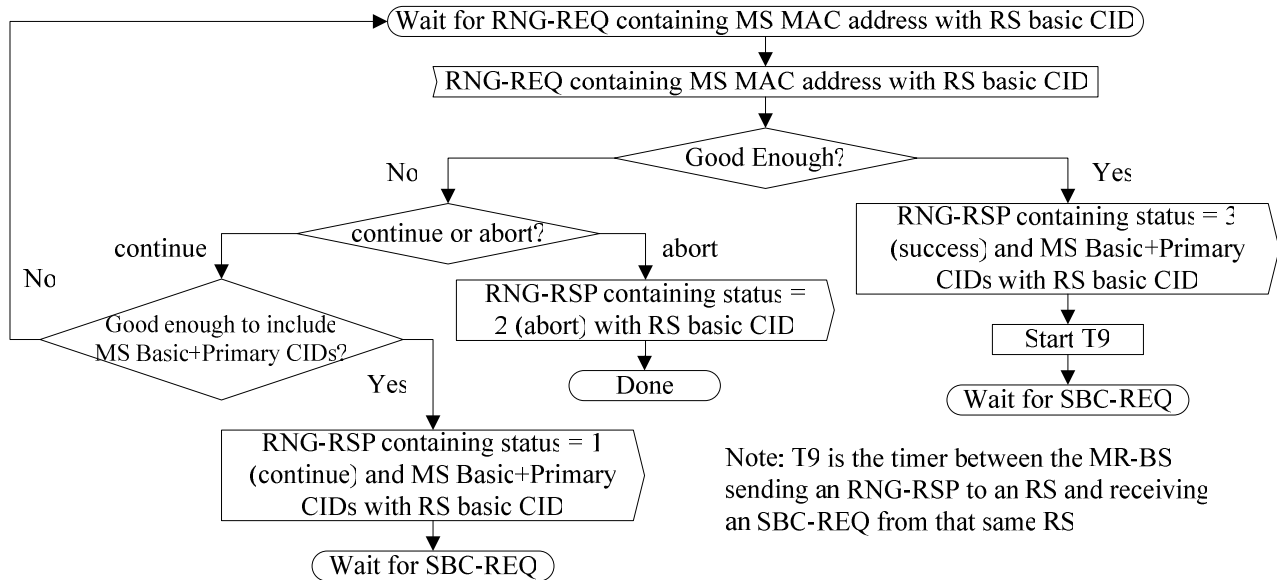


Figure 95h Handle RNG-REQ in non-transparent mode at MR-BS