

# Resource Request for Bandwidth

## IEEE 802.16 Presentation Submission Template (Rev. 8.3)

Document Number:

IEEE S802.16j-06/189

Date Submitted:

2006-11-07

Source:

Yousuf Saifullah, Shashikant Maheshwari, Haihong Zheng  
Nokia  
6000 Connection Drive, Irving, TX 75039

Voice: +1-972 894 5000

Fax: [Fax Number]

E-mail: [Yousuf.Saifullah@nokia.com](mailto:Yousuf.Saifullah@nokia.com),  
[Shashikant.Maheshwari@nokia.com](mailto:Shashikant.Maheshwari@nokia.com), [Haihong.Zheng@nokia.com](mailto:Haihong.Zheng@nokia.com)

Venue:

Session #46; Dallas, TX, USA.

Base Document:

IEEE C80216j-06\_189.doc

Purpose:

This contribution proposes MS sleep mode interworking with RS. It also proposes RS sleep mode procedure.

Notice:

This document has been prepared to assist IEEE 802.16. It is offered as a basis for discussion and is not binding on the contributing individual(s) or organization(s). The material in this document is subject to change in form and content after further study. The contributor(s) reserve(s) the right to add, amend or withdraw material contained herein.

Release:

The contributor grants a free, irrevocable license to the IEEE to incorporate material contained in this contribution, and any modifications thereof, in the creation of an IEEE Standards publication; to copyright in the IEEE's name any IEEE Standards publication even though it may include portions of this contribution; and at the IEEE's sole discretion to permit others to reproduce in whole or in part the resulting IEEE Standards publication. The contributor also acknowledges and accepts that this contribution may be made public by IEEE 802.16.

IEEE 802.16 Patent Policy:

The contributor is familiar with the IEEE 802.16 Patent Policy and Procedures <<http://ieee802.org/16/ipr/patents/policy.html>>, including the statement "IEEE standards may include the known use of patent(s), including patent applications, provided the IEEE receives assurance from the patent holder or applicant with respect to patents essential for compliance with both mandatory and optional portions of the standard." Early disclosure to the Working Group of patent information that might be relevant to the standard is essential to reduce the possibility for delays in the development process and increase the likelihood that the draft publication will be approved for publication. Please notify the Chair <<mailto:chair@wirelessman.org>> as early as possible, in written or electronic form, if patented technology (or technology under patent application) might be incorporated into a draft standard being developed within the IEEE 802.16 Working Group. The Chair will disclose this notification via the IEEE 802.16 web site <<http://ieee802.org/16/ipr/patents/notices>>.

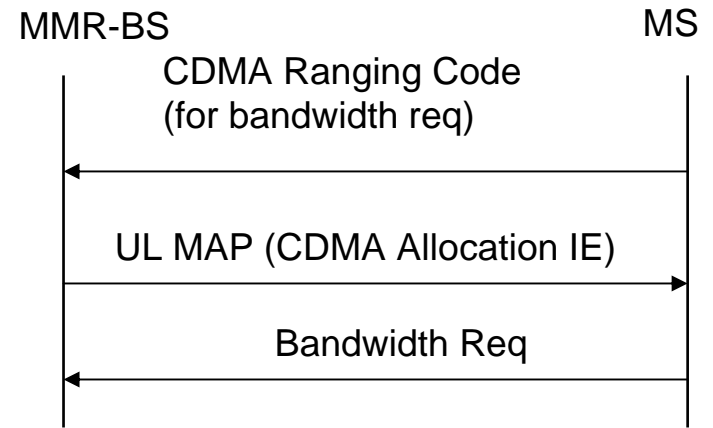
# Introduction

- In the existing spec, a CDMA ranging code is used for requesting UL allocation
- It is used for bandwidth request, and ranging procedures
- This contribution extends the same mechanism for Relays

# Problem in using Ranging Code procedure with Relays

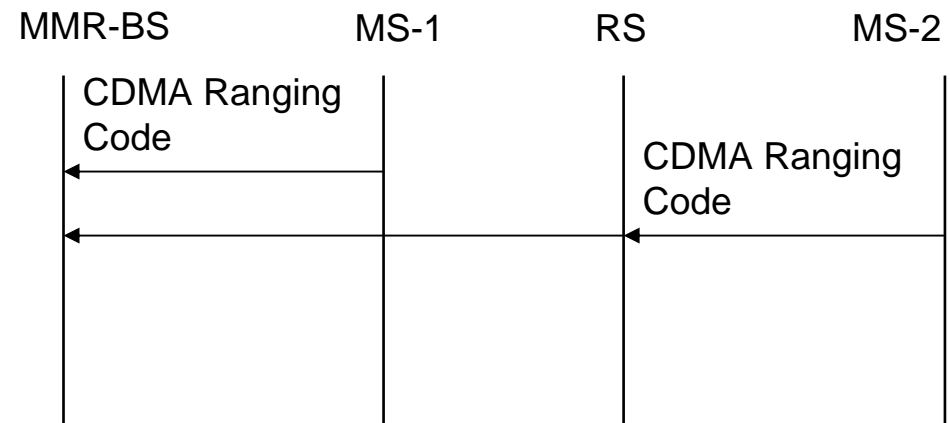
## Without Relay

- MMR-BS receives code directly and does UL allocation for the only link



## With Relay

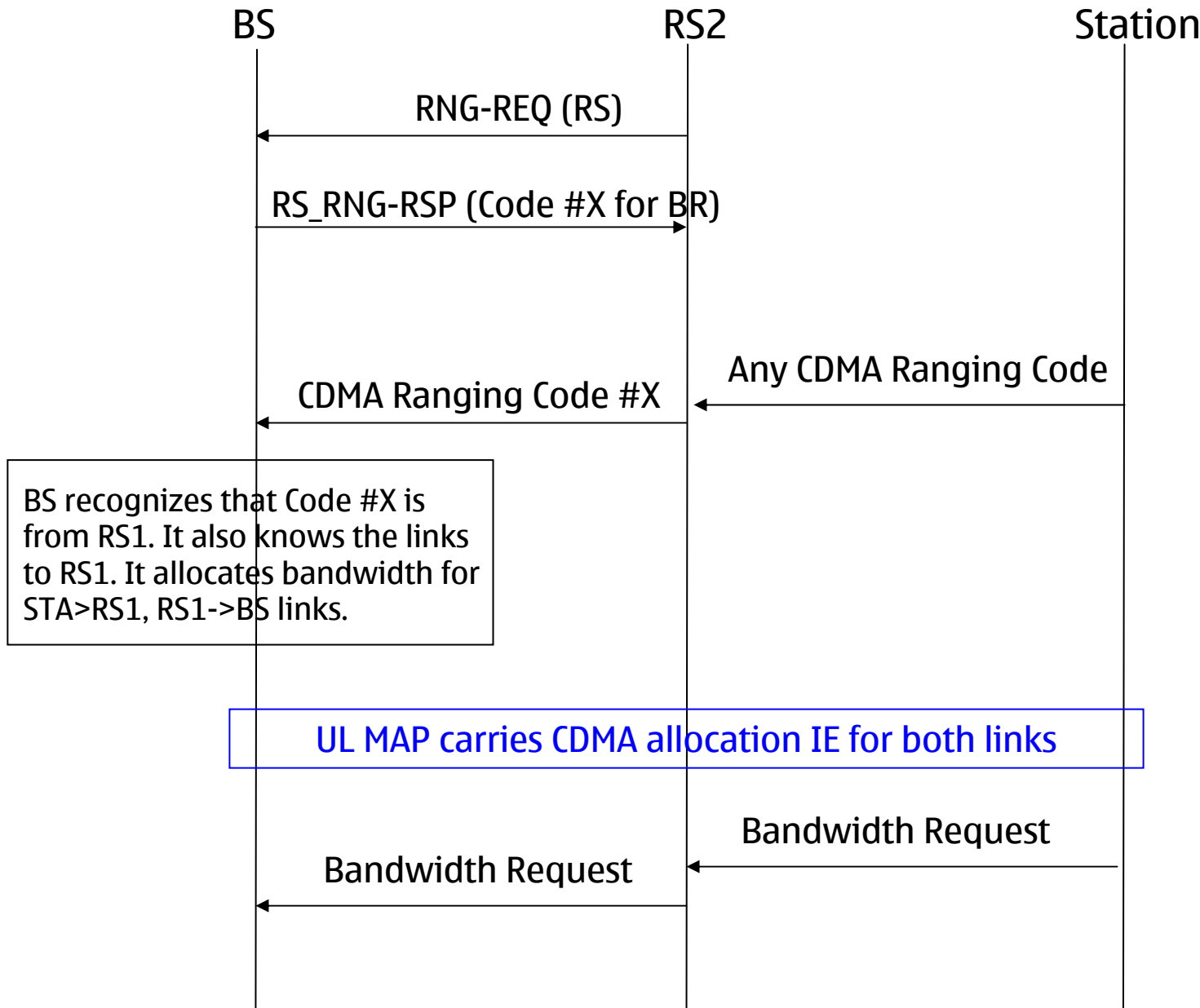
- MS-1 needs UL allocation for MS-1 -> MMR-BS link
- MS-2 needs UL allocation for MS-2 -> RS & RS->MMR-BS link
- How MMR-BS can distinguish the above with only CDMA code?



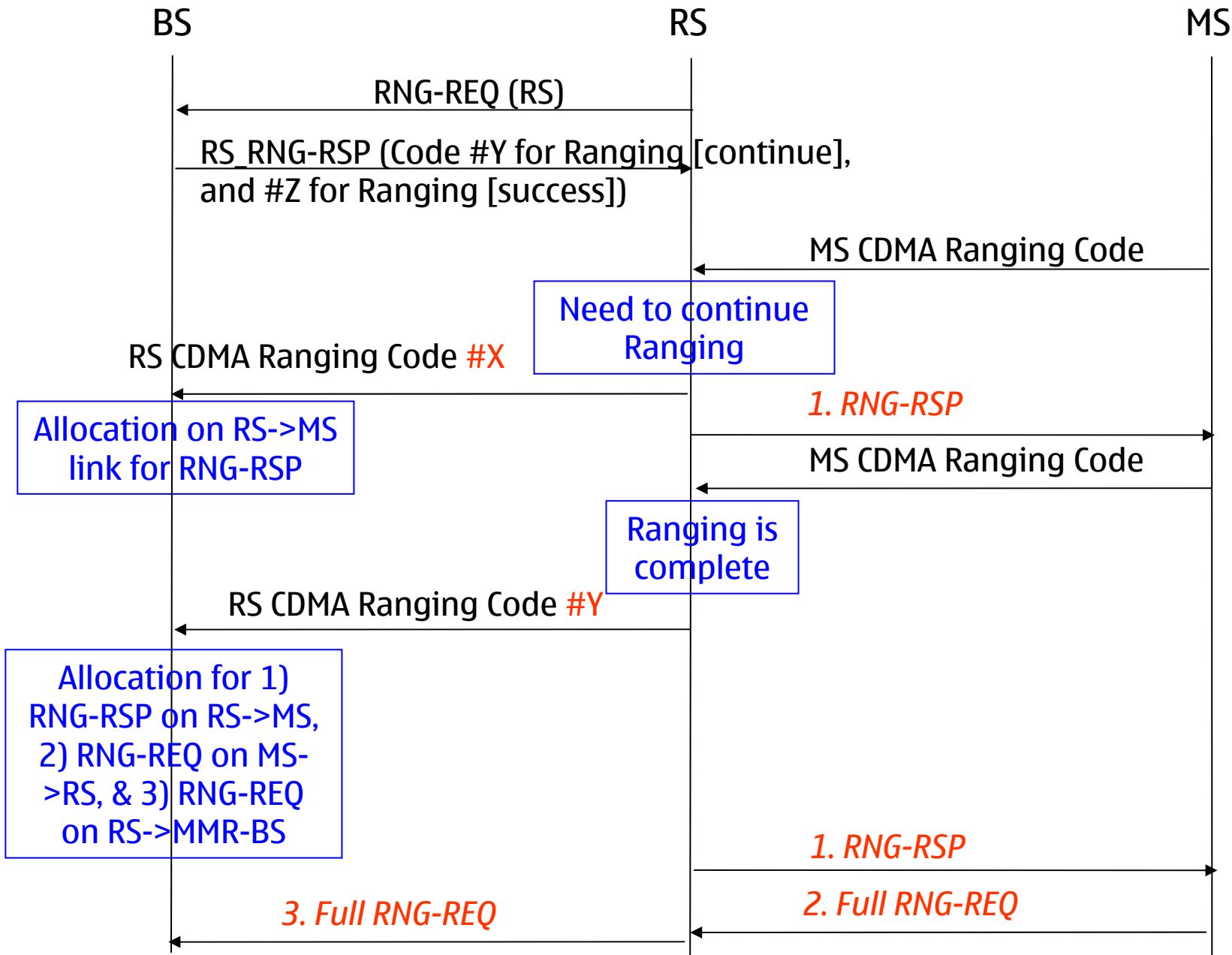
# Solution

- The MMR-BS allocates a set of CDMA codes for RS. It sends UCD with the CDMA ranging codes excluding the RS CDMA codes.
- A station performs initial ranging with the MMR-BS with a code broadcast in the UCD.
  - If the station is RS, it is assigned RS\_CDMA\_Codes in RS\_RNG-RSP.
  - If the station is MS/SS, no code assignment is done.
- The MMR-BS finds the path to the RS by using Path Determination procedure to an RS. (separate contribution)
- When a station in the system needs bandwidth, it sends a ranging code (from the UCD) on the access link.
  - If the station is one hop away, the MMR-BS receives a ranging code (from the UCD) and does UL allocation as in existing section 6.3.6.5.
  - If the station is multiple hops away, the access RS replaces the received ranging code (from the UCD) and replaces it with its assigned RS ranging code. The code is relayed toward the MMR-BS. The MMR-BS recognizes the RS with the help of the assigned RS code. It assigns uplink allocation for each relay link and the access link.

# Using Assigned Ranging Code for BR



# Using Assigned RS Ranging Code for Ranging



# Proposed Additions in the Spec

- RNG-REQ to carry RS indication, needed by other contributions also
- RS\_RNG-RSP to carry RS CDMA ranging code list
- Description of the bandwidth request and ranging procedures

# Advantages

- Solves the problem not only for Bandwidth Request, but for also initial ranging and periodic ranging.
- Same for fixed, nomadic, and mobile RS.
- Completely transparent to the existing procedures, and requires no changes on the MS.
- Same for two hop or more than two hop relay network.
- Minimal additions to the specifications