

1		
2		
3		
4	Project	IEEE 802.16 Broadband Wireless Access Working Group <http://ieee802.org/16>
5		
6	Title	Figures pertaining to comments submitted in LB#6
7		
8	Date Submitted	2002-06-27
9		
10	Source(s)	Carl Eklund Voice: +358-7180 36566
11		Nokia Fax: +358-7180 36851
12		P.O. Box 407 mailto:carl eklund@nokia.com
13		Fin-00045 Nokia Group
14		
15	Re:	Working Group LB #6
16		
17	Abstract	Figures pertaining to LB comments
18		
19	Purpose	
20		
21	Notice	This document has been prepared to assist IEEE 802.16. It is offered as a basis for discussion and is not binding on the contributing individual(s) or organization(s). The material in this document is subject to change in form and content after further study. The contributor(s) reserve(s) the right to add, amend or withdraw material contained herein.
22		
23	Release	The contributor grants a free, irrevocable license to the IEEE to incorporate material contained in this contribution, and any modifications thereof, in the creation of an IEEE Standards publication; to copyright in the IEEE's name any IEEE Standards publication even though it may include portions of this contribution; and at the IEEE's sole discretion to permit others to reproduce in whole or in part the resulting IEEE Standards publication. The contributor also acknowledges and accepts that this contribution may be made public by IEEE 802.16.
24		
25	Patent Policy and Procedures	The contributor is familiar with the IEEE 802.16 Patent Policy and Procedures (Version 1.0) < http://ieee802.org/16/ipr/patents/policy.html >, including the statement "IEEE standards may include the known use of patent(s), including patent applications, if there is technical justification in the opinion of the standards-developing committee and provided the IEEE receives assurance from the patent holder that it will license applicants under reasonable terms and conditions for the purpose of implementing the standard." Early disclosure to the Working Group of patent information that might be relevant to the standard is essential to reduce the possibility for delays in the development process and increase the likelihood that the draft publication will be approved for publication. Please notify the Chair < mailto:r.b.marks@ieee.org > as early as possible, in written or electronic form, of any patents (granted or under application) that may cover technology that is under consideration by or has been approved by IEEE 802.16. The Chair will disclose this notification via the IEEE 802.16 web site < http://ieee802.org/16/ipr/patents/notices >.
26		
27		
28		
29		
30		
31		
32		
33		
34		
35		
36		
37		
38		
39		
40		
41		
42		
43		
44		
45		
46		
47		
48		
49		
50		
51		
52		
53		
54		
55		
56		
57		
58		
59		
60		
61		
62		
63		
64		
65		

In figure 48. A box should be added with the action 'Start T2' after the 'Start Lost UL-MAP Interval'

On page 112 replace figure 52 with Figure 1.

On page 112 replace Figure 53 with Figure 2.

1
2
3
4
5
6
7
8
9
10
11
12
13
14
15
16
17
18
19
20
21
22
23
24
25
26
27
28
29
30
31
32
33
34
35
36
37
38
39
40
41
42
43
44
45
46
47
48
49
50
51
52
53
54
55
56
57
58
59
60
61
62
63
64
65

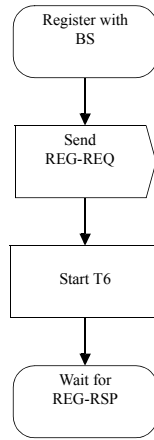


Figure 1—Registration — SS

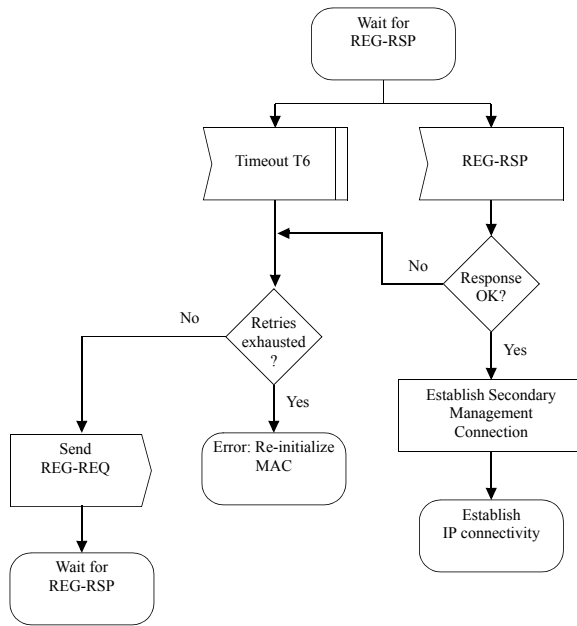


Figure 2—Wait for REG-RSP — SS

1 Replace figure 54 on page 113 with Figure 3 below. On page 113 in the second paragraph change “T9
 2 (defined in Table 118)” to “T17(defined in Table 118).
 3
 4
 5
 6
 7
 8
 9
 10
 11
 12
 13
 14
 15
 16
 17
 18
 19
 20
 21
 22
 23
 24
 25
 26
 27
 28
 29
 30
 31
 32
 33
 34
 35
 36
 37
 38
 39
 40
 41
 42
 43
 44
 45
 46
 47
 48
 49
 50
 51
 52
 53
 54
 55
 56
 57
 58
 59
 60
 61
 62
 63
 64
 65

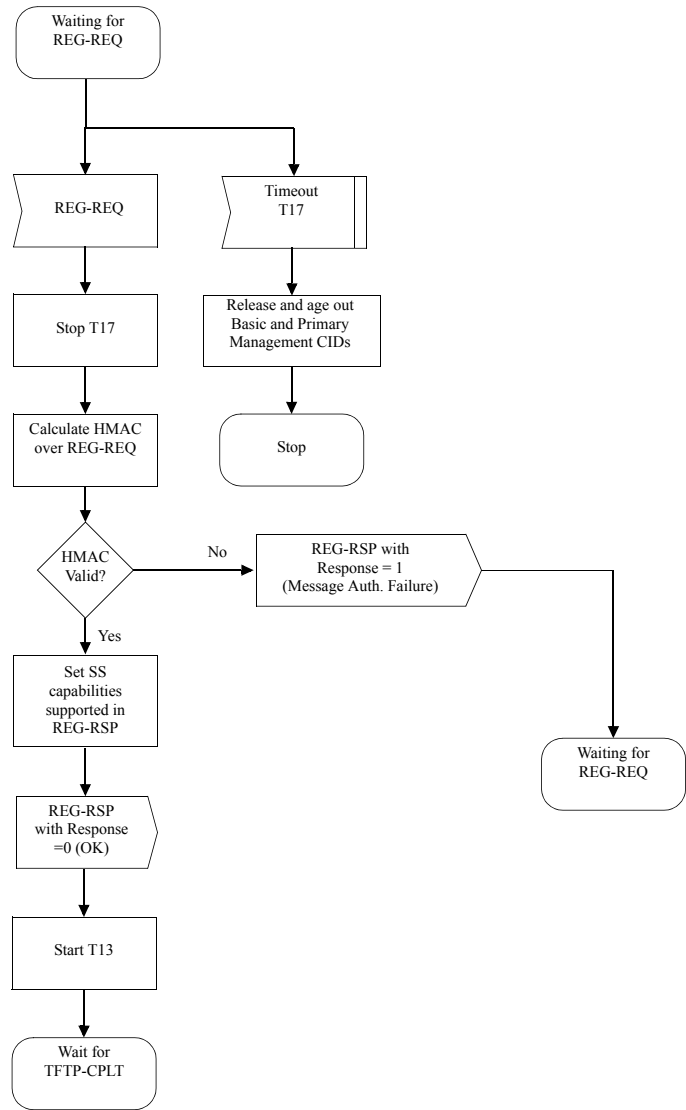


Figure 3—Registration — BS

Add sentences to the end of paragraph 6.2.9.7 with the text “ The procedures that shall be followed by the SS are shown in Figure 4 and Figure 5. The BS shall follow the procedure shown in Figure 6.

1
2
3
4
5
6
7
8
9
10
11
12
13
14
15
16
17
18
19
20
21
22
23
24
25
26
27
28
29
30
31
32
33
34
35
36
37
38
39
40
41
42
43
44
45
46
47
48
49
50
51
52
53
54
55
56
57
58
59
60
61
62
63
64
65

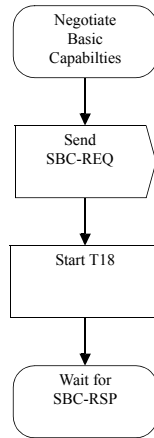


Figure 4—Negotiate Basic Capabilities— SS

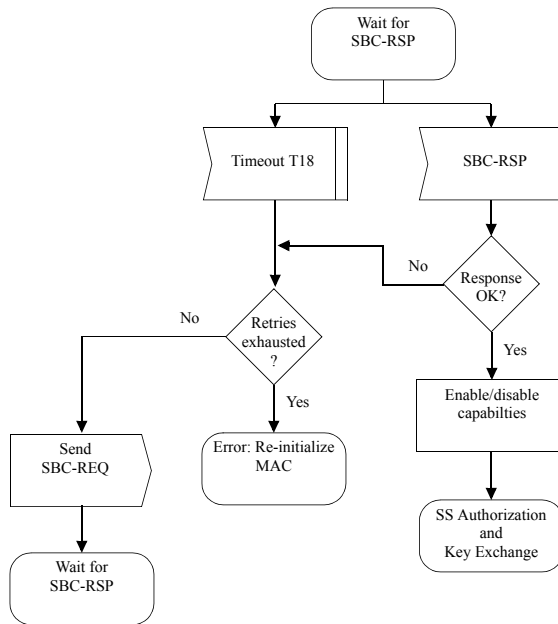


Figure 5—Wait for SBC-RSP — SS

1
2
3
4
5
6
7
8
9
10
11
12
13
14
15
16
17
18
19
20
21
22
23
24
25
26
27
28
29
30
31
32
33
34
35
36
37
38
39
40
41
42
43
44
45
46
47
48
49
50
51
52
53
54
55
56
57
58
59
60
61
62
63
64
65

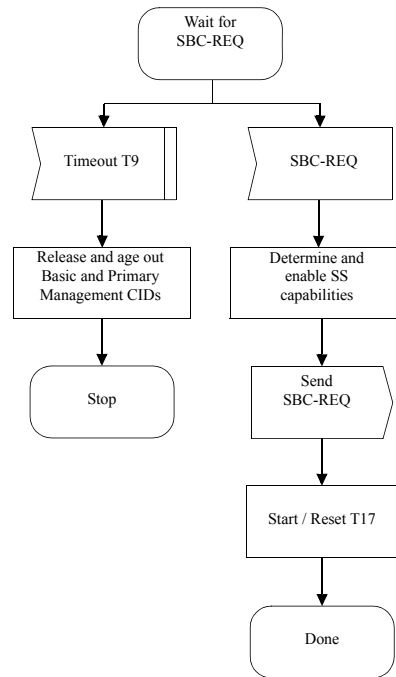


Figure 6—Negotiate Basic Capabilities— BS

1
2
3
4
5
6
7
8
9
10
11
12
13
14
15
16
17
18
19
20
21
22
23
24
25
26
27
28
29
30
31
32
33
34
35
36
37
38
39
40
41
42
43
44
45
46
47
48
49
50
51
52
53
54
55
56
57
58
59
60
61
62
63
64
65

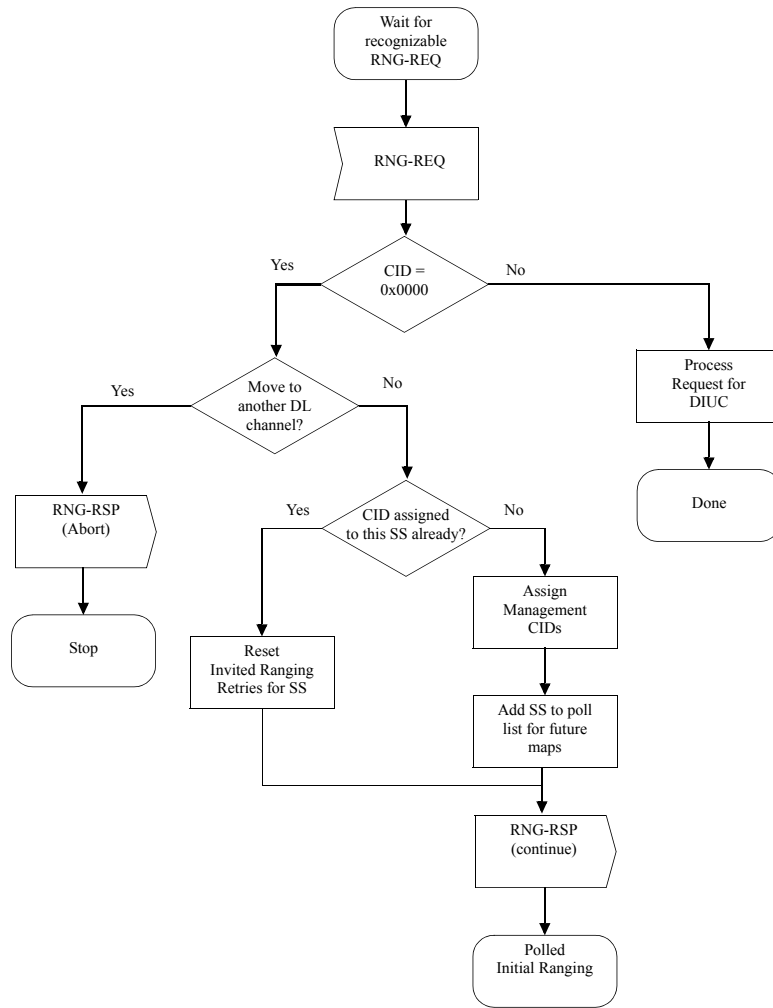
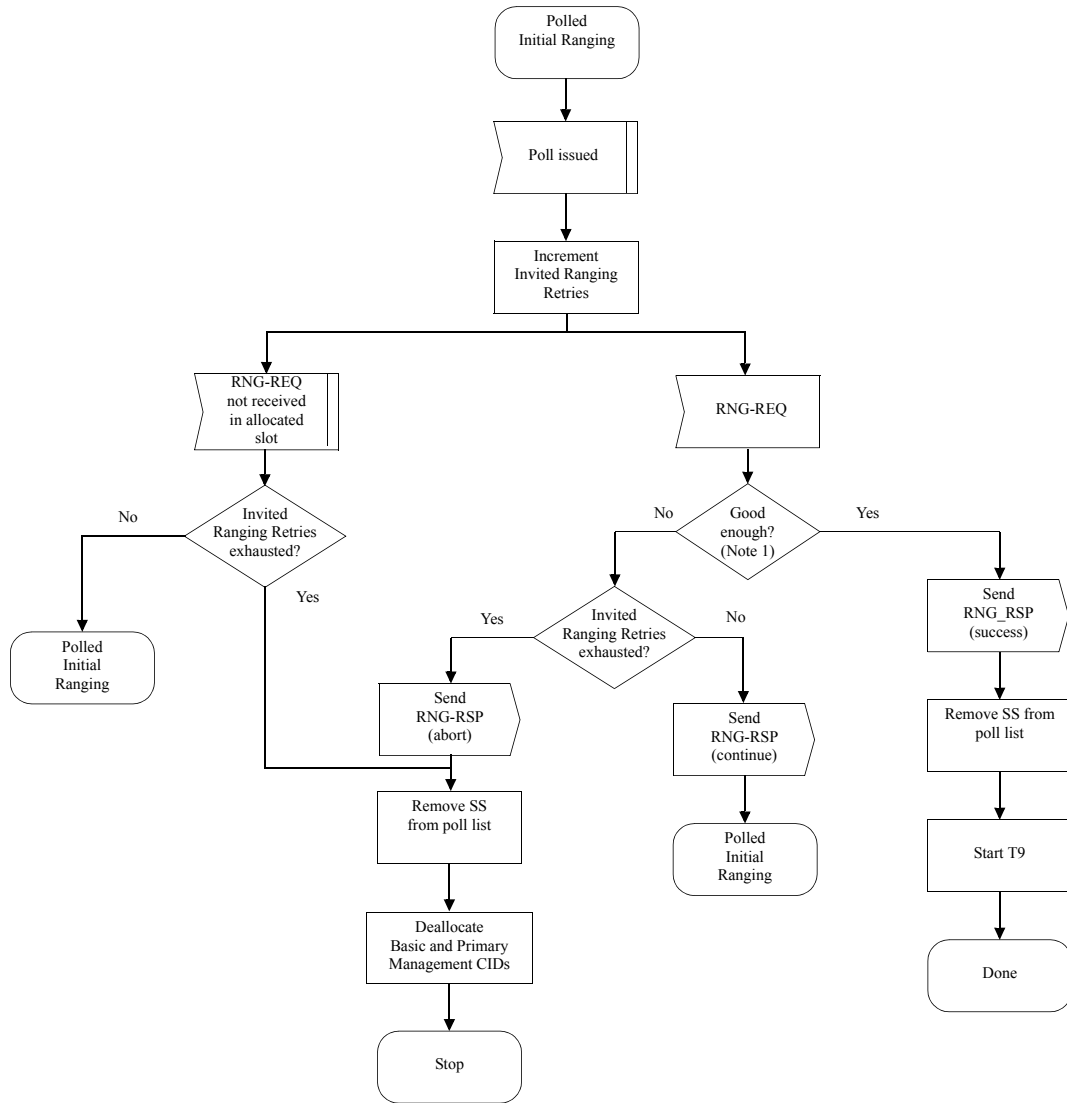


Figure 7—Initial Ranging - BS

1
2
3
4
5
6
7
8
9
10
11
12
13
14
15
16
17
18
19
20
21
22
23
24
25
26
27
28
29
30
31
32
33
34
35
36
37
38
39
40
41
42
43
44
45
46
47
48
49
50
51
52
53
54
55
56
57
58
59
60
61
62
63
64
65



NOTE 1—Means ranging is within the tolerable limits of the BS.

NOTE 2—RNG-REQ pending-until-complete was nonzero, the BS should hold off the station maintenance opportunity accordingly unless needed, for example, to adjust the SS's power level.

Figure 8—Initial Ranging, Polled Phase- BS

1
2
3
4
5
6
7
8
9
10
11
12
13
14
15
16
17
18
19
20
21
22
23
24
25
26
27
28
29
30
31
32
33
34
35
36
37
38
39
40
41
42
43
44
45
46
47
48
49
50
51
52
53
54
55
56
57
58
59
60
61
62
63
64
65

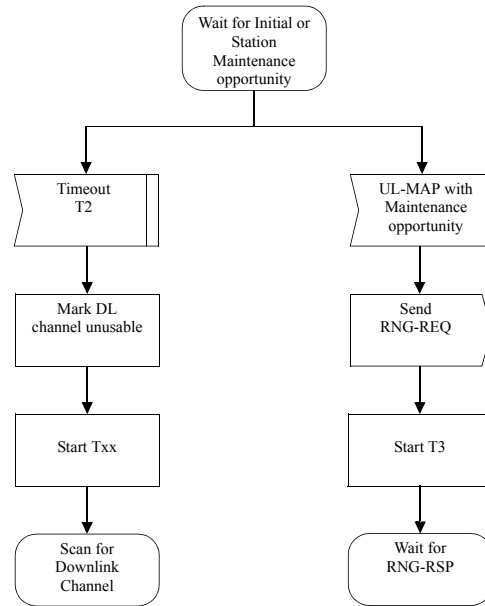


Figure 9—Initial Ranging 1-SS

Note: Timeout T3 may occur because the RNG-REQs from multiple SSs collided. T3 timeouts can also occur during multi-channel operation. On a system with multiple uplink channels, the SS must attempt initial ranging on every suitable uplink channel before marking the DL channel unusable and moving to the next available downlink channel.

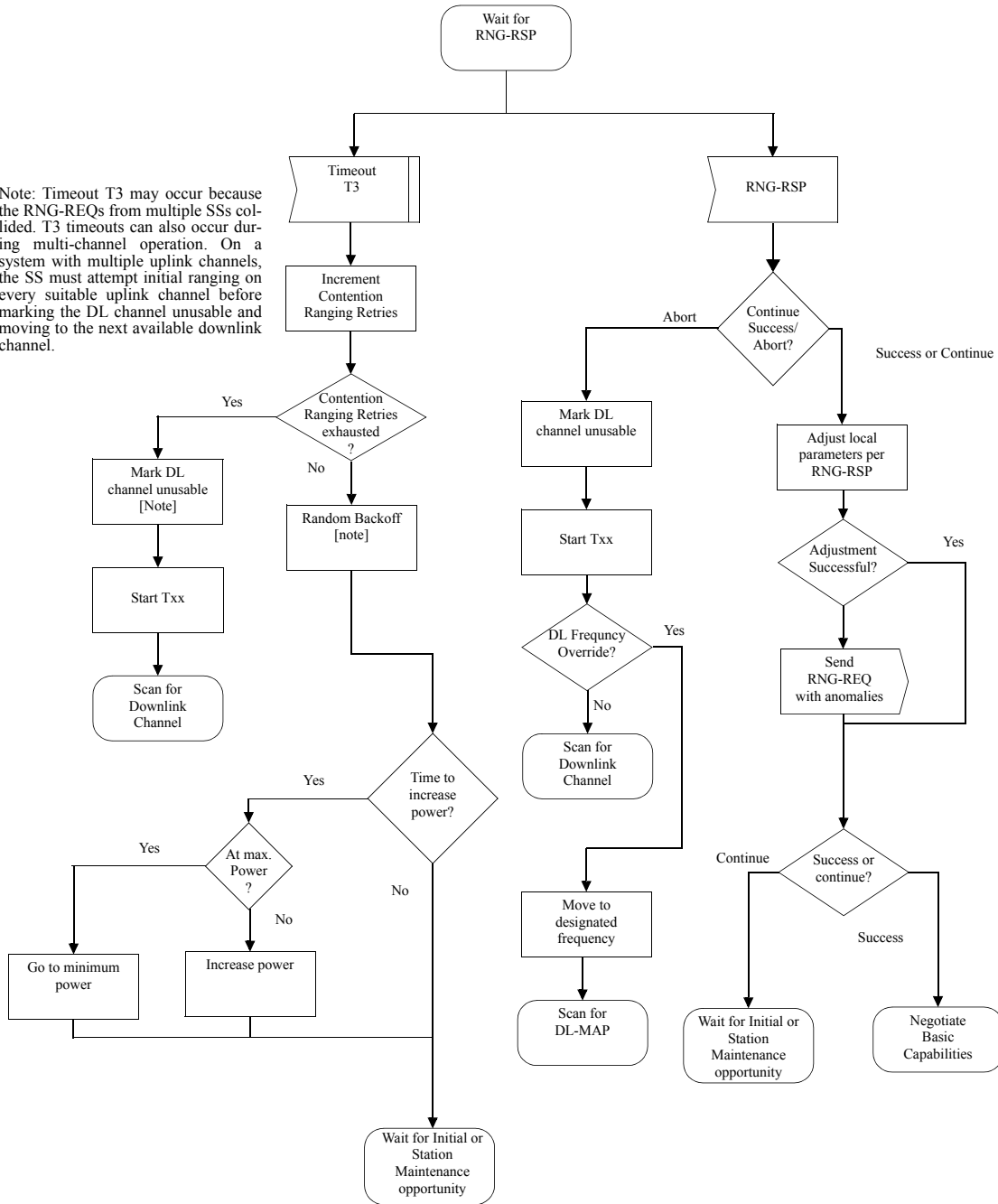


Figure 10—Initial Ranging 2-SS