

|                |  |   |
|----------------|--|---|
| Project        | <b>IEEE 802.16 Broadband Wireless Access Working Group</b> < <a href="http://ieee802.org/16">http://ieee802.org/16</a> >   |   |
| Title          | <b>Comments on CDMA-based HO Ranging Procedure for IEEE 802.16m/D1 (15.2.5.10.5.1)</b>   |   |
| Date Submitted | <b>2009-08-28</b>  |   |
| Source(s)      | Yih-Guang Jan, Yang-Han Lee,<br>Hsien-Wei Tseng, Ming-Hsueh Chuang,<br>Jheng-Yao Lin<br><b>Tamkang University (TKU)</b>  | Yih-Guang Jan, Yang-Han Lee,<br>Hsien-Wei Tseng, Ming-Hsueh Chuang,<br>Jheng-Yao Lin<br><b>Tamkang University (TKU)</b> |
|                | Youn-Tai Lee, Chun-Yen Hsu<br><b>Institute for Information Industry (III)</b>  | Youn-Tai Lee, Chun-Yen Hsu<br><b>Institute for Information Industry (III)</b>   |
|                | Shiann-Tsong Sheu<br><b>National Central University (NCU)</b>  | Shiann-Tsong Sheu<br><b>National Central University (NCU)</b>   |
|                | Whai-En Chen<br><b>National Ilan University (NIU)</b>  | Whai-En Chen<br><b>National Ilan University (NIU)</b>   |
|                | Shiunn-Jang Chern<br><b>National Sun Yat-sen University(NSYSU)</b>   | Shiunn-Jang Chern<br><b>National Sun Yat-sen University(NSYSU)</b>  |
| Re:            | IEEE 802.16 Working Group Letter Ballot #30: P802.16m/D1   |   |
| Abstract       | Comments on CDMA-based HO Ranging Procedure for IEEE P802.16m/D1 (15.2.5.10.5.1)   |   |
| Purpose        | To be discussed and adopted by TGm for IEEE P802.16m/D1.   |   |
| Notice         | <i>This document does not represent the agreed views of the IEEE 802.16 Working Group or any of its subgroups. It represents only the views of the participants listed in the "Source(s)" field above. It is offered as a basis for discussion. It is not binding on the contributor(s), who reserve(s) the right to add, amend or withdraw material contained herein.</i>   |   |
| Release        | The contributor grants a free, irrevocable license to the IEEE to incorporate material contained in this contribution, and any modifications thereof, in the creation of an IEEE Standards publication; to copyright in the IEEE's name any IEEE Standards publication even though it may include portions of this contribution; and at the IEEE's sole discretion to permit others to reproduce in whole or in part the resulting IEEE Standards publication. The contributor also acknowledges and accepts that this contribution may be made public by IEEE 802.16.   |   |
| Patent Policy  | The contributor is familiar with the IEEE-SA Patent Policy and Procedures:<br>< <a href="http://standards.ieee.org/guides/bylaws/sect6-7.html#6">http://standards.ieee.org/guides/bylaws/sect6-7.html#6</a> > and<br>< <a href="http://standards.ieee.org/guides/opman/sect6.html#6.3">http://standards.ieee.org/guides/opman/sect6.html#6.3</a> >.<br>Further information is located at < <a href="http://standards.ieee.org/board/pat/pat-material.html">http://standards.ieee.org/board/pat/pat-material.html</a> > and<br>< <a href="http://standards.ieee.org/board/pat">http://standards.ieee.org/board/pat</a> >. |   |

## **Comments on CDMA-based HO Ranging Procedure for IEEE P802.16m/D1 (15.2.5.10.5.1)**

*Yih-Guang Jan, Yang-Han Lee, Hsien-Wei Tseng, Ming-Hsueh Chuang, Jheng-Yao Lin*

*Tamkang University (TKU)*

*Youn-Tai Lee, Chun-Yen Hsu*

*Institute for Information Industry (III)*

*Shiann-Tsong Sheu*

*National Central University (NCU)*

*Whai-En Chen*

*National Ilan University (NIU)*

*Shiunn-Jang Chern*

*National Sun Yat-sen University(NSYSU)*

### **1. Introduction**

This contribution provides the corrected figure in the description of CDMA-based Ranging Procedure. It has some errors in Figure 405 in the description of ‘MS based state machine during HO network re-entry’.

### **2. Proposed IEEE P802.16m/D1 Text Modification**

*[In IEEE P80216m/D1, Section 15.2.5.10.5.1, replace Figure 405 by the following corrected figure]*

=====*Start of Proposed Text*=====

15.2.5.10.5.1 CDMA-based HO Ranging Procedure

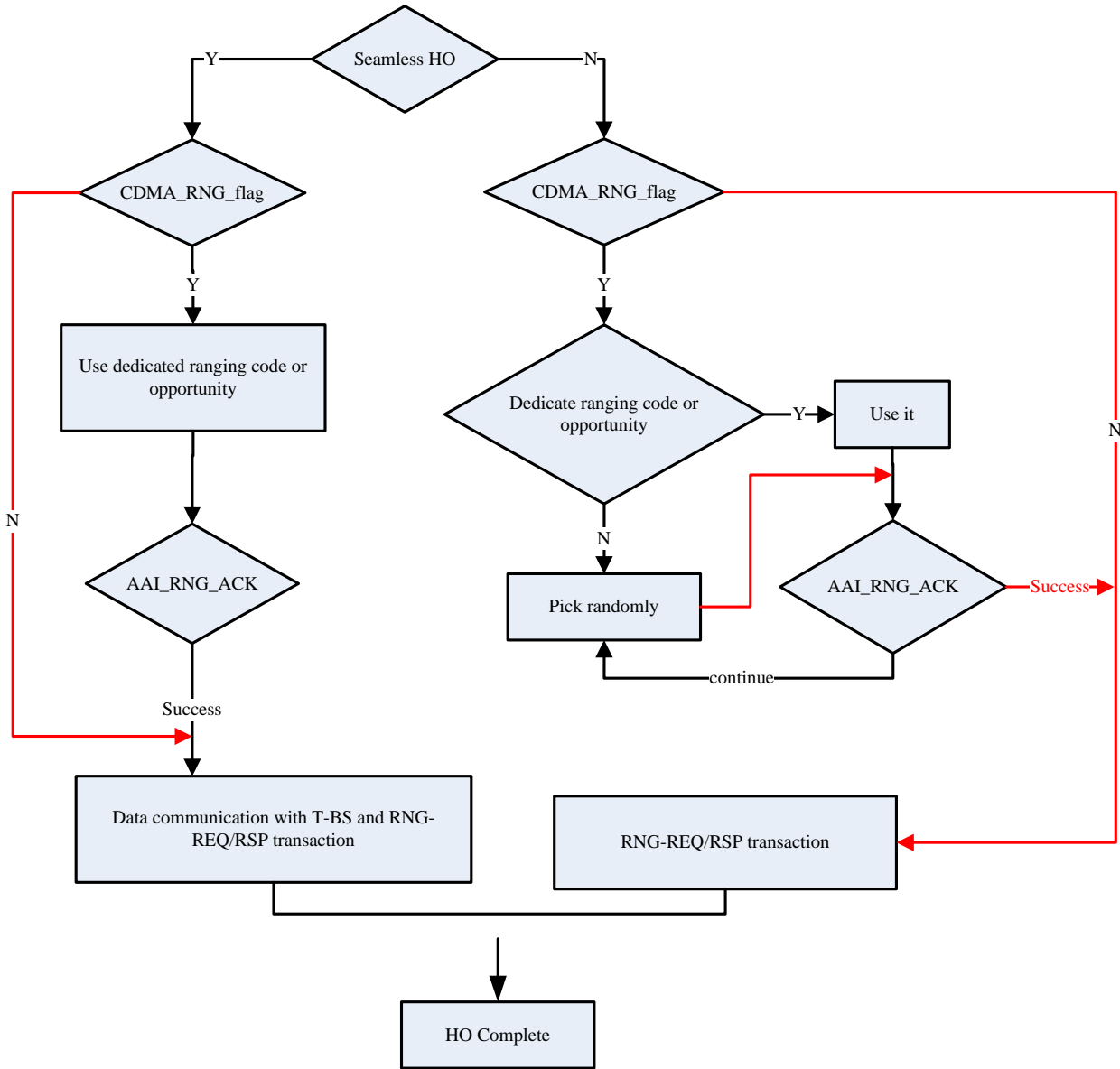


Figure 405-MS State machine during HO network re-entry

=====*End of Proposed Text*=====