

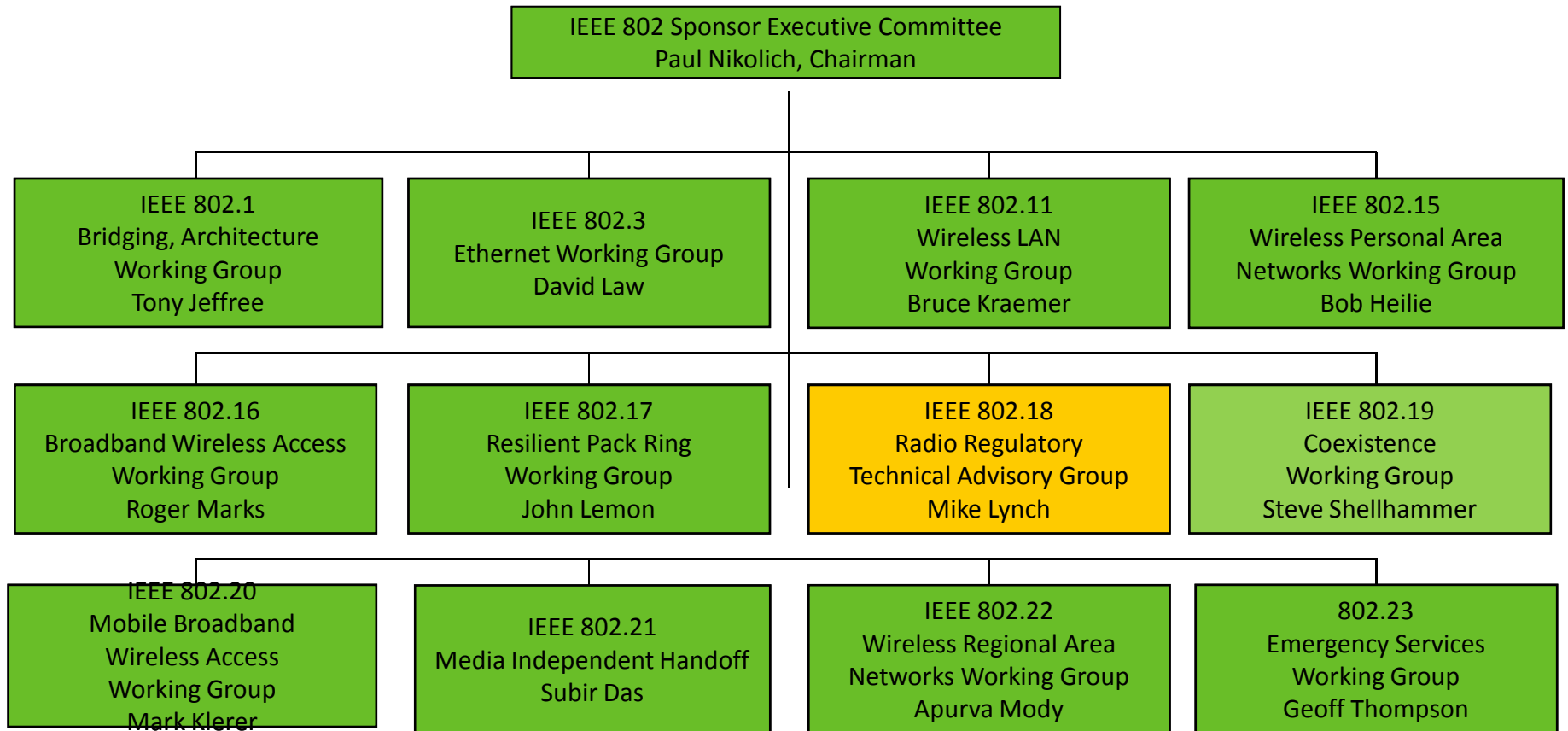
IEEE 802 LAN/MAN Standards Committee

March 2011 802 Workshop

Agenda

- 1) Welcome-- PaulN 5 min
- 2) IEEE, IEEE-SA Overview--~~Bob Grow~~ PaulN 5 min
- 3) 802- process overview--~~JonR~~ PaulN 5 min
- 4) SA/802-policy and procedure--~~MatS~~ PaulN 5 min
- 5) 802 Architecture and 802.1 TonyJ 30 min
- 7) 802.3 -- DavidL 30 min
- 8) 802.11 -- BruceK 30 min
- break--15min
- 9) 802.15 -- BobH 30 min
- 10) 802.16-- ~~MatS~~ BruceK 30 min
- 11) 802.17-- JohnL 10 min
- 12) 802.18-- MikeL 5 min
- 13) 802.19-- ~~Tuncer Baykas~~ MikeL 15 min
- 14) 802.20-- ~~Canchi~~ PaulN 15 min
- 15) 802.21-- ~~Subir~~ ApurvaM 20 min
- 16) 802.22-- ApurvaM 20 min
- 17) 802.23-- GeoffT 10 min
- 18) Q&A
- 19) Wrap up--Paul

IEEE 802 Executive Committee



Appointed members:

1st VC: Pat Thaler,

Recording Secretary: James Gilb,

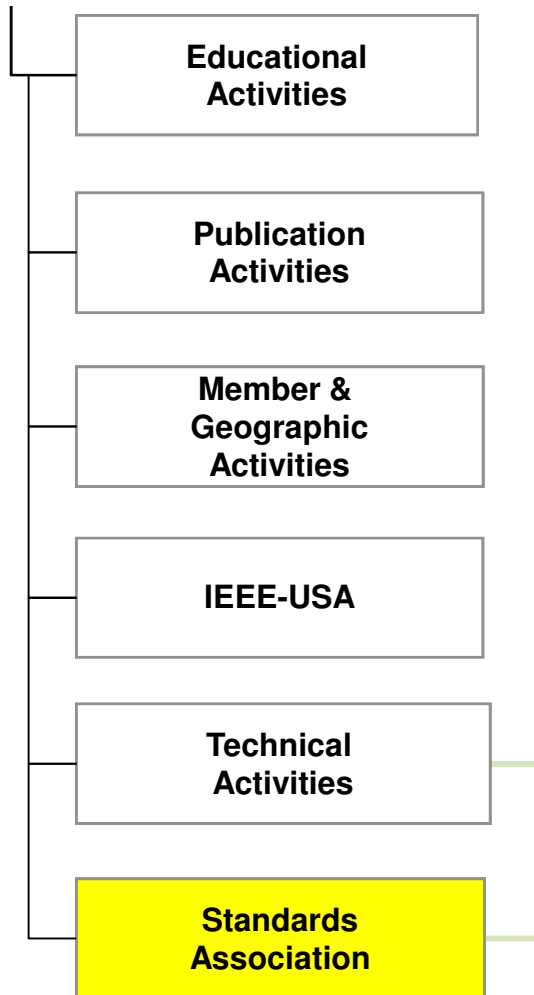
Treasurer: Bob Grow,

2nd VC: Mat Sherman,

Executive Secretary: Jon Rosdahl,

Member Emeritus Mtg Mgr: Buzz Rigsbee

IEEE Board of Directors



**How IEEE-802 fits
within the
high level IEEE
Organizational
Unit
structure**

← IEEE 802 LMSC fits here

IEEE Members (December 2009)

North America

229,442 (1%)

Europe

53,215 (3%)

Africa

5,651 (4%)

Asia

85,116 (12%)

**Latin America
& Caribbean**

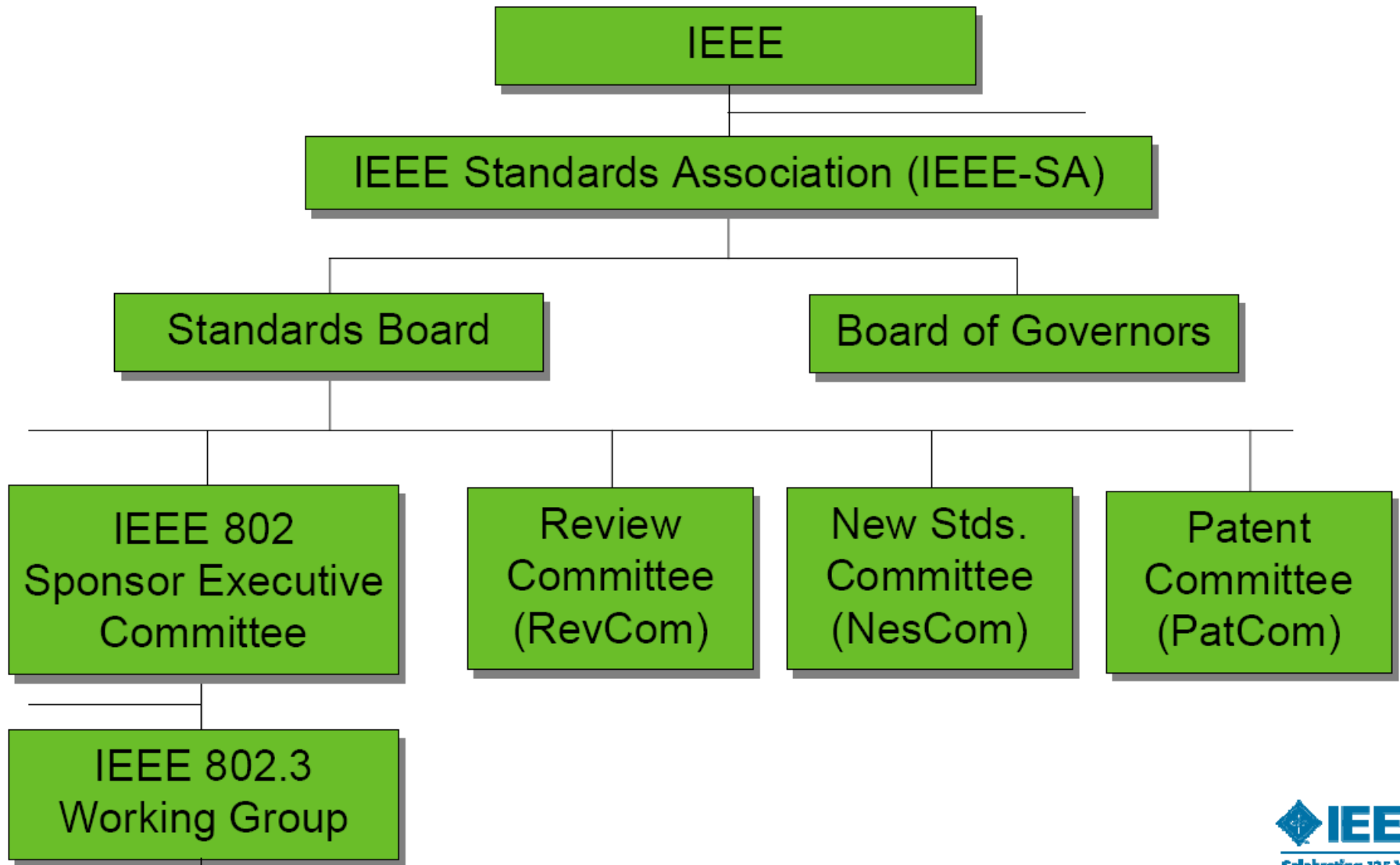
14,827 (0.5%)

Oceania

8,340 (6%)

(% Annual Growth in 2009)

IEEE-SA Overview



IEEE Technical Societies/Councils

- Aerospace & Electronic Systems
- Antennas & Propagation
- Broadcast Technology
- Circuits & Systems
- Communications
- Components, Packaging, & Manufacturing Technology
- Computer ← IEEE 802 fits here
- Computational Intelligence
- Consumer Electronics
- Control Systems
- Council on Electronic Design Automation
- Council on Superconductivity
- Dielectrics & Electrical Insulation
- Education
- Electromagnetic Compatibility
- Electron Devices
- Engineering in Medicine & Biology
- Geosciences & Remote Sensing
- Industrial Electronics
- Industry Applications
- Information Theory
- Intelligent Transportation Systems
- Instrumentation & Measurement
- Lasers & Electro-Optics
- Magnetics
- Microwave Theory & Techniques
- Nanotechnology Council
- Nuclear & Plasma Sciences
- Oceanic Engineering
- Power Electronics
- Power & Energy
- Product Safety Engineering
- Professional Communication
- Reliability
- Robotics & Automation
- Sensors Council
- Signal Processing
- Social Implications of Technology
- Solid-State Circuits
- Systems Council
- Systems, Man, & Cybernetics
- Technology Management Council
- Ultrasonic's, Ferroelectrics, & Frequency Control
- Vehicular Technology

What is a “Standard”?

- IEEE SA definition:

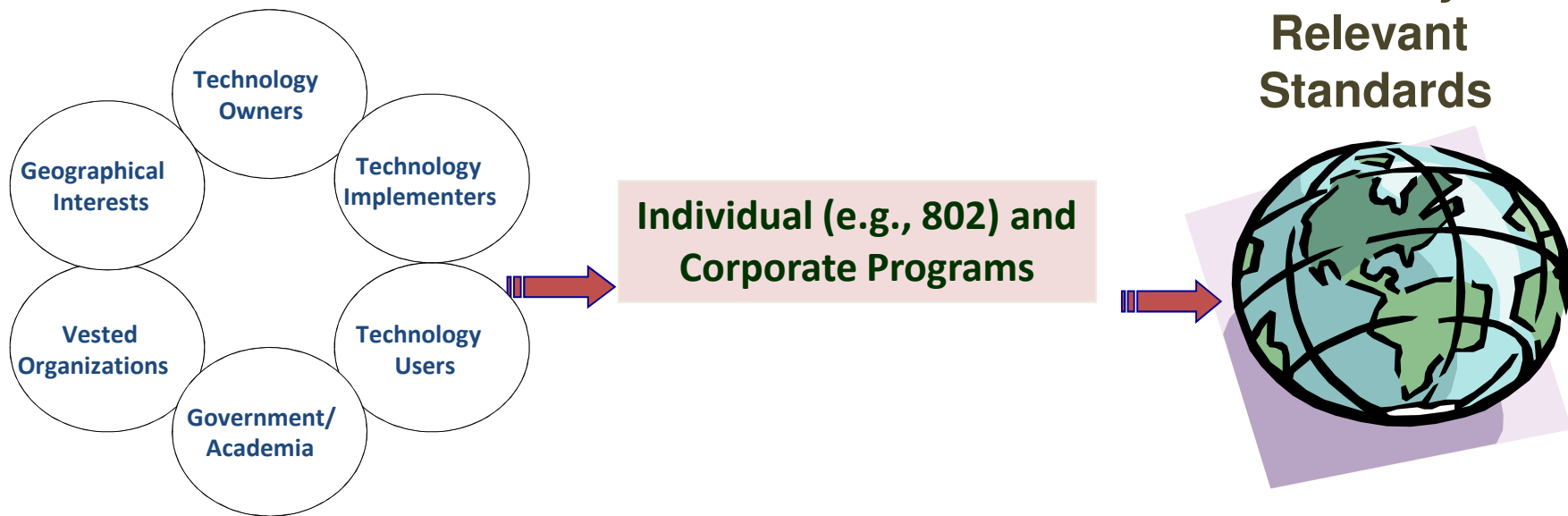
Technical standards are established norms or requirements.

- They are usually available as **formal documents** that determine uniform criteria, methods, processes and practices for:

engineering,
technical,
performance and
interoperability ←----IEEE 802 LAN/MAN Standards

Among their uses are the setting of specifications at the onset of a design, defining constraints during the detailed design process, and serving as benchmarks during testing.

IEEE-802 Supports Standards-Development Constituents



Recognizing the expanding breadth of constituents and stakeholders in the adoption of global standards

IEEE-SA Values

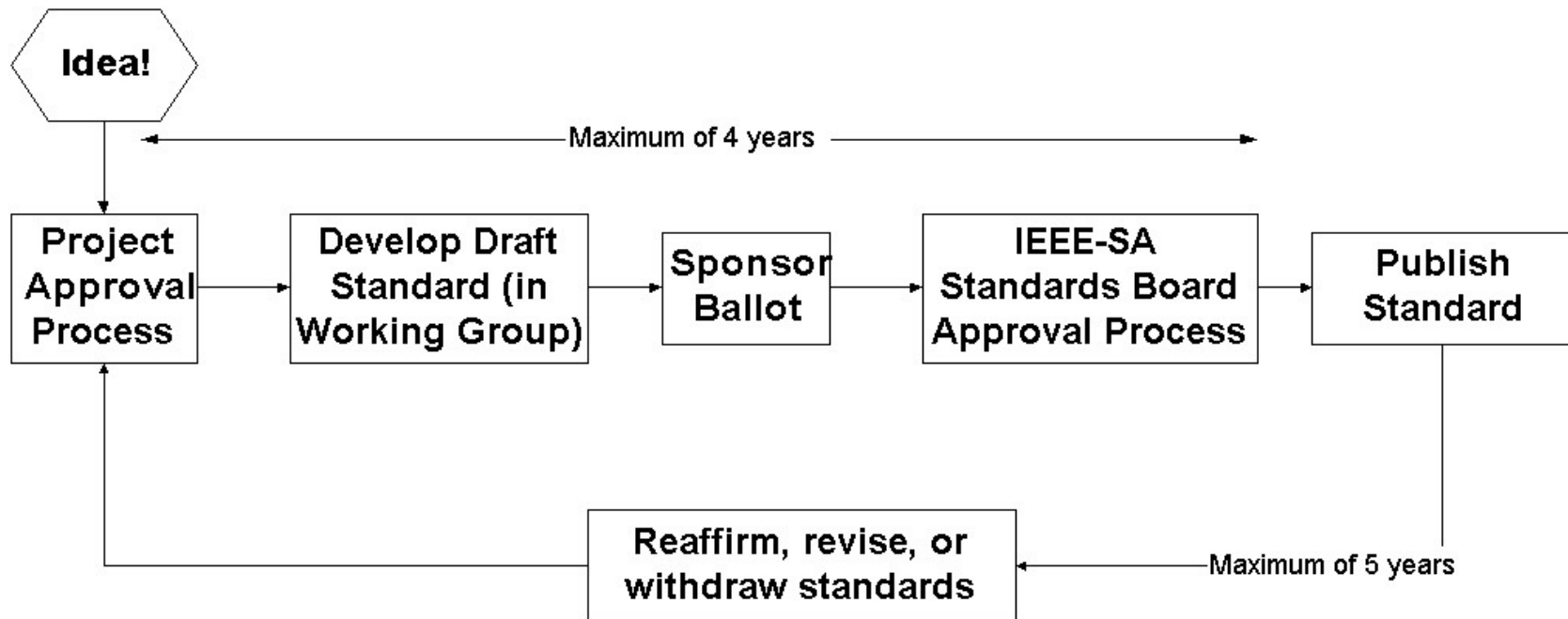
Five principles guide
IEEE standards development
and ensure adherence requirements of the World Trade
Organization



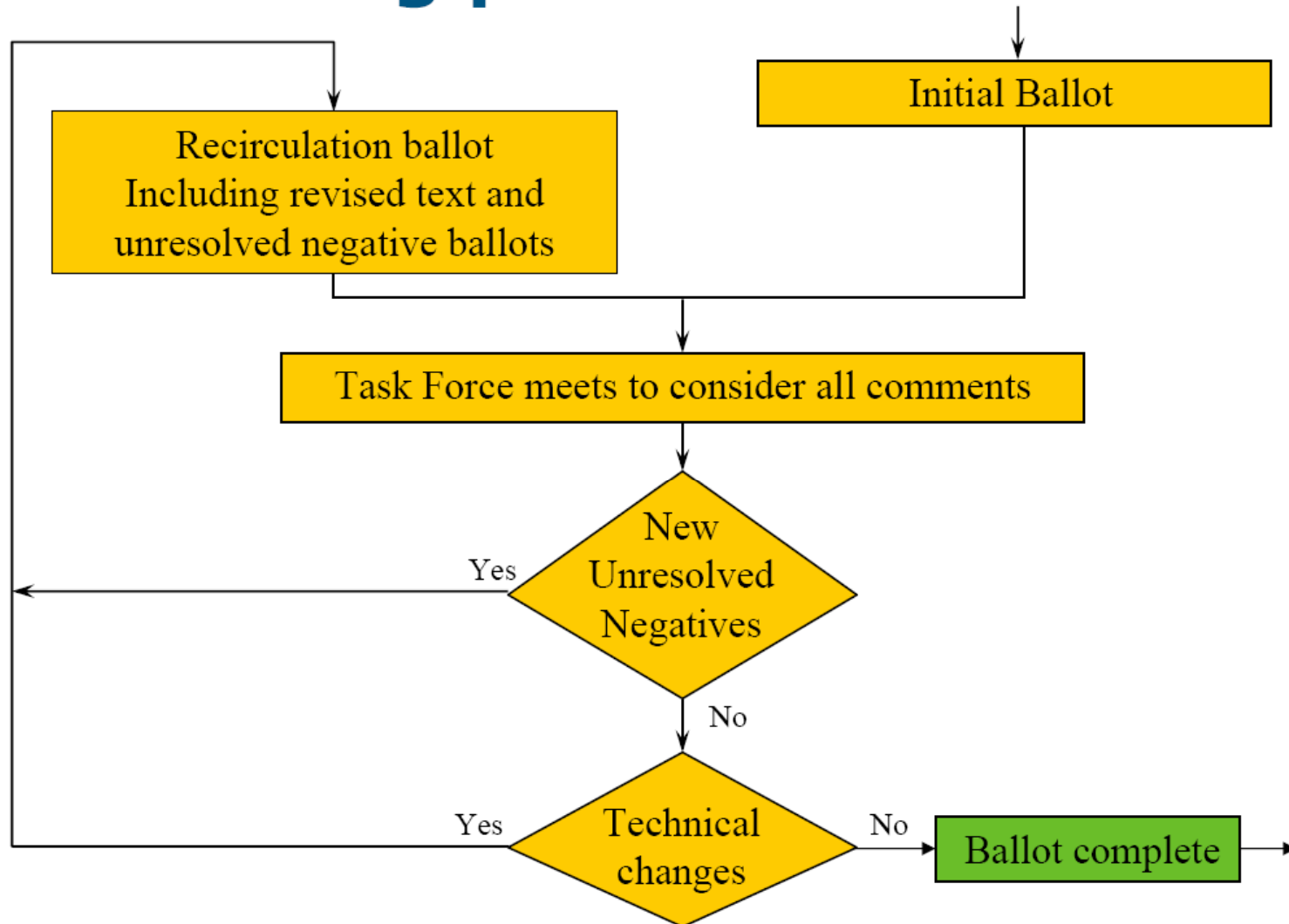
To ensure

- Collaboration and community building
- Global and timely market relevance
- Technical integrity and excellence

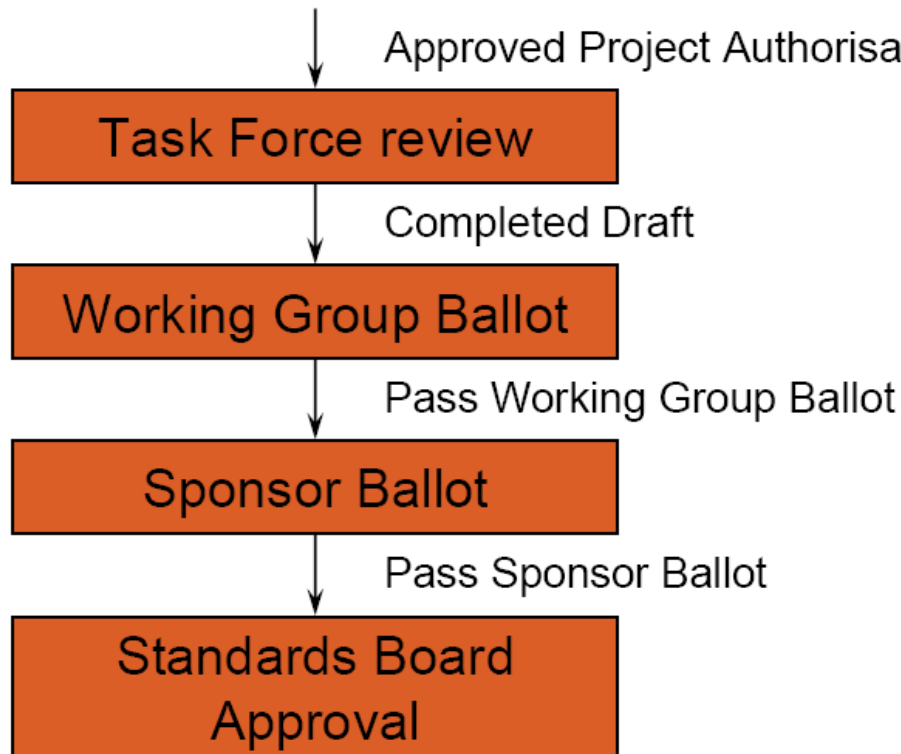
IEEE Standards Development: Process Flow



Balloting process



IEEE 802 Standards Development Overview



Votes on technical issues requires a minimum of 75% approval to pass

Work Process

- Activity/Workload
 - Approx 12 new projects approved per year
 - Approx 50 projects simultaneously in process
 - Approx 12 standards approved per year
- 3 Plenary Sessions per year (MAR, JUL, NOV)
 - Entire 802 LMSC assemblies
 - Participation around 1000 individuals
- 3 Interim Sessions per year (JAN, MAY, SEP)
 - Individual WGs or collection of WGs
 - Participation numbers varies per group
- Teleconferences
 - many held between sessions, number and frequency depends on project workload

Why have rules?

- Orderly conduct of business
- Foster fairness and openness
- Avoid running afoul of the law
 - Patents
 - Anti-trust
 - Etc.

What are the rules?

- [New York State Not-For-Profit Corporation Law](#)
 - [IEEE Certificate of Incorporation](#)
 - [IEEE Constitution](#)
 - [IEEE Bylaws](#)
 - [IEEE Policies](#)
 - IEEE Board of Directors Resolutions
 - [IEEE Standards Association Operations Manual](#)
 - IEEE-SA Board of Governors Resolutions
 - [IEEE-SA Standards Board Bylaws](#)
 - [IEEE-SA Standards Board Operations Manual](#)
 - IEEE-SA Standards Board Resolutions
 - IEEE Computer Society (CS) Constitution
 - IEEE CS Bylaws
 - IEEE CS Policies and Procedures Manual (PPM), Section 10
 - IEEE CS Board of Governors Resolutions
 - IEEE CS Standards Activities Board Policies and Procedures (SAB P&P)
 - [IEEE Project 802 LAN/MAN Standards Committee \(LMSC\) Sponsor Policies and Procedures \(LMSC P&P\)](#)
 - [IEEE Project 802 LAN/MAN Standards Committee \(LMSC\) Operations Manual \(LMSC OM\)](#)
 - [IEEE Project 802 LAN/MAN Standards Committee \(LMSC\) Working Group P&P \(LMSC WG P&P\)](#)
 - IEEE 802 LMSC WG Operations Manuals
 - *Robert's Rules of Order (Revised)*
 - The recommended guide on questions of parliamentary procedure not addressed above...
-
- The diagram uses brackets to group the items in the list into four categories:
- IEEE**: Includes the first five items (New York State Not-For-Profit Corporation Law, IEEE Certificate of Incorporation, IEEE Constitution, IEEE Bylaws, IEEE Policies).
 - IEEE SA**: Includes items 6 through 11 (IEEE Board of Directors Resolutions, IEEE Standards Association Operations Manual, IEEE-SA Board of Governors Resolutions, IEEE-SA Standards Board Bylaws, IEEE-SA Standards Board Operations Manual, IEEE-SA Standards Board Resolutions).
 - IEEE CS**: Includes items 12 through 16 (IEEE Computer Society (CS) Constitution, IEEE CS Bylaws, IEEE CS Policies and Procedures Manual (PPM), Section 10, IEEE CS Board of Governors Resolutions, IEEE CS Standards Activities Board Policies and Procedures (SAB P&P)).
 - LMSC**: Includes items 17 through 19 (IEEE Project 802 LAN/MAN Standards Committee (LMSC) Sponsor Policies and Procedures (LMSC P&P), IEEE Project 802 LAN/MAN Standards Committee (LMSC) Operations Manual (LMSC OM), IEEE Project 802 LAN/MAN Standards Committee (LMSC) Working Group P&P (LMSC WG P&P)).

What should you know?

- **Active Participant**

- IEEE Project 802 LAN/MAN Standards Committee (LMSC) Sponsor Policies and Procedures (LMSC P&P)
- IEEE Project 802 LAN/MAN Standards Committee (LMSC) Operations Manual (LMSC OM)
- IEEE Project 802 LAN/MAN Standards Committee (LMSC) Working Group P&P (LMSC WG P&P)
- WG Operations Manuals
- *Robert's Rules of Order (Revised)*

- **Additional for Officers**

- IEEE-SA Standards Board Operations Manual

Other important documents

- [IEEE 802 LMSC Chair's Guidelines](#)
 - IEEE 802 “Conventions”
- [The IEEE-SA Standards Style Manual](#)

IEEE 802 Working Groups

