



Welcome to IEEE 802 Newcomer Orientation

www.ieee802.org

IEEE 802 Plenary Session
Last updated, October 6, 2011



Contents

- Introduction to IEEE 802
- Introduction to IEEE standards process
- Getting more information



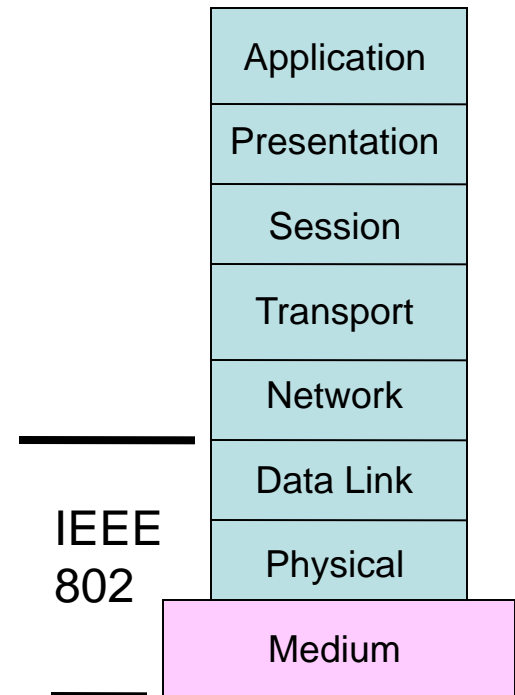
Introduction to IEEE 802



Who we are

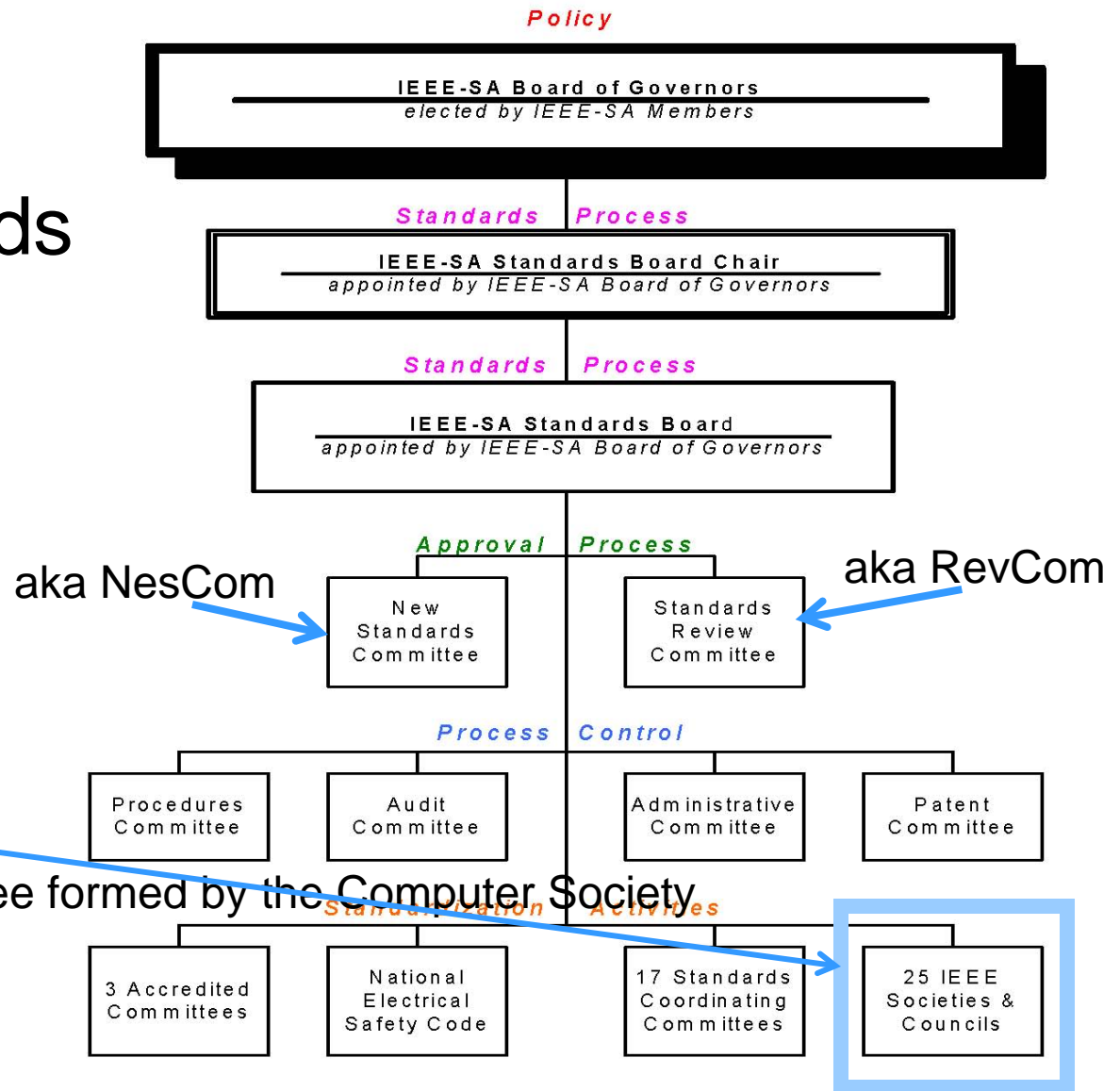
- IEEE Project 802 LAN/MAN Standards Committee (aka IEEE 802 or LMSC)
 - Develop LAN and MAN standards
 - Mainly for link and physical layers of the network stack
 - In operation since March 1980

OSI Reference Model





IEEE Standards Organization



IEEE 802 is here:
a standards committee formed by the Computer Society

Some terms

- PAR – project authorization request – the document that authorizes work on a project.
- WG - Working group – responsible for developing standards in an area
- TAG – Technical Advisory Group – experts on a topic area that crosses working groups – may develop a recommended practice.
- Task group or task force – a part of a working group which focuses on a particular project.



All those dots....decoder ring

- 802.1 Bridging and Architecture – generally the top of the link layer
- 802.3 Ethernet
- 802.11 Wireless LAN (WLAN)
- 802.15 Wireless Personal Area Network (WPAN)
- 802.16 Broadband Wireless Access (BWA)
- 802.18 Radio Regulatory TAG
- 802.19 Coexistence
- 802.21 Media Independent Handover
- 802.22 Wireless Regional Area Networks (WRAN)
- 802.24 Smart Grid TAG



IEEE 802 Organization

EXECUTIVE COMMITTEE (EC)

CHAIR
Paul Nikolich

Working Group/TAG Chairs

802.1
BRIDGING/ARCH
Tony Jeffree

802.3
Ethernet
David Law

802.11
WLAN
Bruce Kraemer

802.15
WPAN
Bob Heile

802.16
BWA
Roger Marks

802.18 TAG
Radio Regulatory
Mike Lynch

802.19
Coexistence
Steve Shellhammer

802.21
Media indep. handd
Subir Das

802.22 WRAN
Apurva Mody

802.24 Smart Grid
James P.K. Gilb

OmniRAN Study Group
Max Riegel

Hibernating WG Chairs (non voting)

802.17 Resilent Packet
Ring
John Lemon

802.20 MBWA
Mark Klerer

Appointed Officers

1st VICE CHAIR
Pat Thaler

2nd VICE CHAIR
James P.K. Gilb

EXECUTIVE SECY
Jon Rosdahl

RECORDING SECY
John D'Ambrosia

TREASURER
Clint Chaplin

Appointed Officers (non voting)

MEETING MGR
MEMBER
EMERITUS
Buzz Rigsbee

MEMBER
EMERITUS
Geoff
Thompson

DISBANDED

- 802.2 LLC
- 802.5 Token Ring
- 802.7 Broadband TAG
- ISLAN
- 802.12 Demand Priority

- 802.4 Token Bus
- 802.6 DQDB
- 802.8 Fiber Optic TAG
- 802.10 Security
- 802.14 CATV

- ECSG TV Whitespace
- ECSG Emergency Services
- 802.23 Emergency Services
- 802.9

General structure of the week

	Sun	Mon	Tue	Wed	Thu	Fri
A M	Some task forces / task group meetings	- Opening EC - 802-newcomer orientation - 802.11-newcomer - Some WG Opening plenaries	Task force and task group meetings		Task force and task group	WG plenary
P M		-Remaining WG opening plenaries -Task force and task group mtgs			WG plenary or task force or group	Closing EC
E v e		tutorials	TF/TG mtgs	social	WG plenary	

Check WG agendas for details – there is some variation between groups



Introduction to IEEE standards process



Principles of the process

- **Due process** – procedures are publicly available and followed consistently
- **Consensus** – requiring agreement of a majority or supermajority – for technical decisions here = 75%
- **Openness** – ensuring materially interested and affected parties can participate
- **Balance** – representation from all interested parties without overwhelming influence from any one party
- **Right of appeal** – process to ensure due process

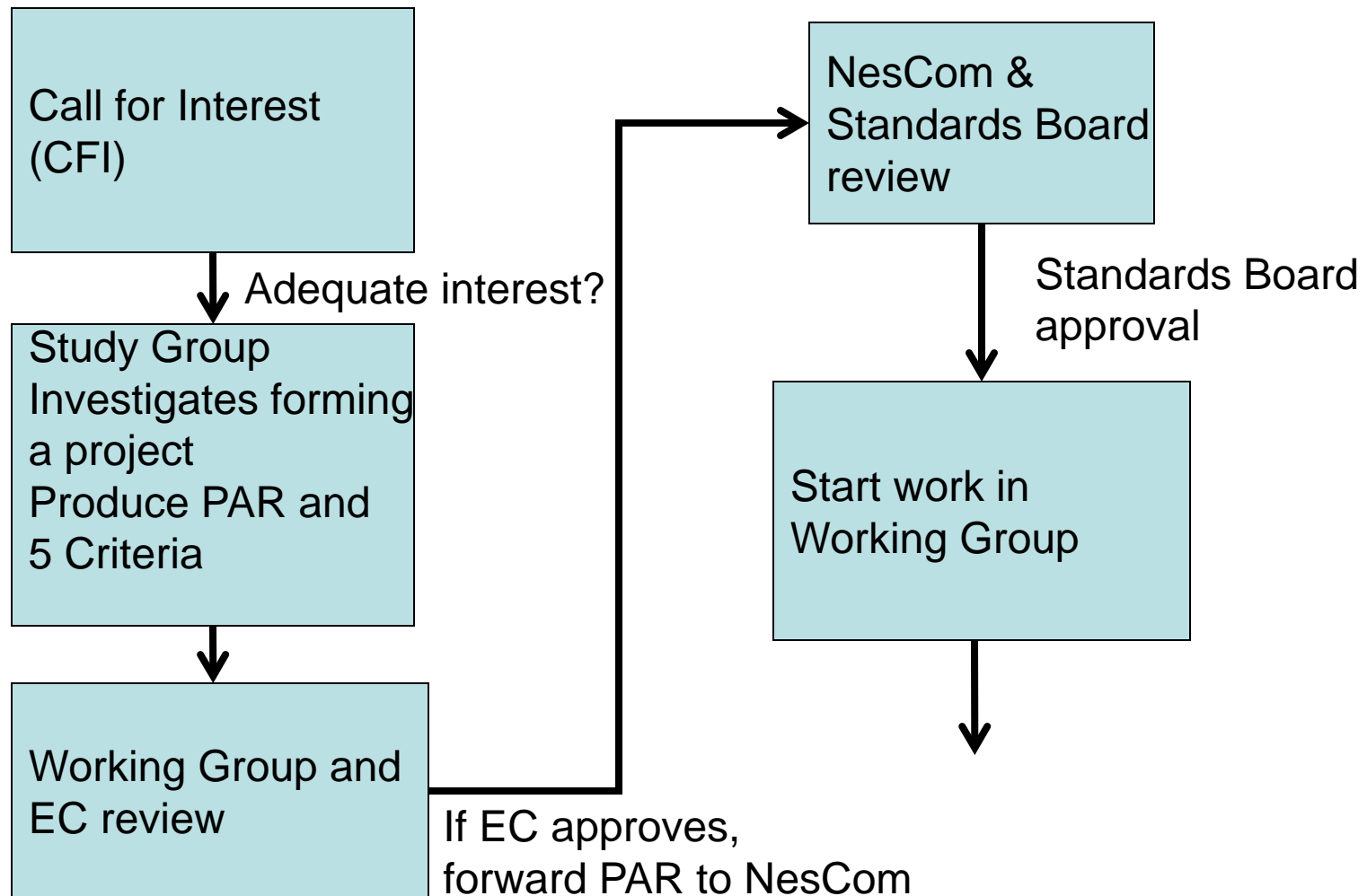


More terms

- PAR – Project Authorization Request – the charter for a standards project
- CFI – Call for interest – a brief meeting to outline a topic and determine if there is interest in investigating possible project
- Study Group – a group formed to investigate a project and produce a PAR
- Five Criteria – In IEEE 802 the basis for determining whether to forward a PAR.



IEEE 802 standards development life cycle – part 1



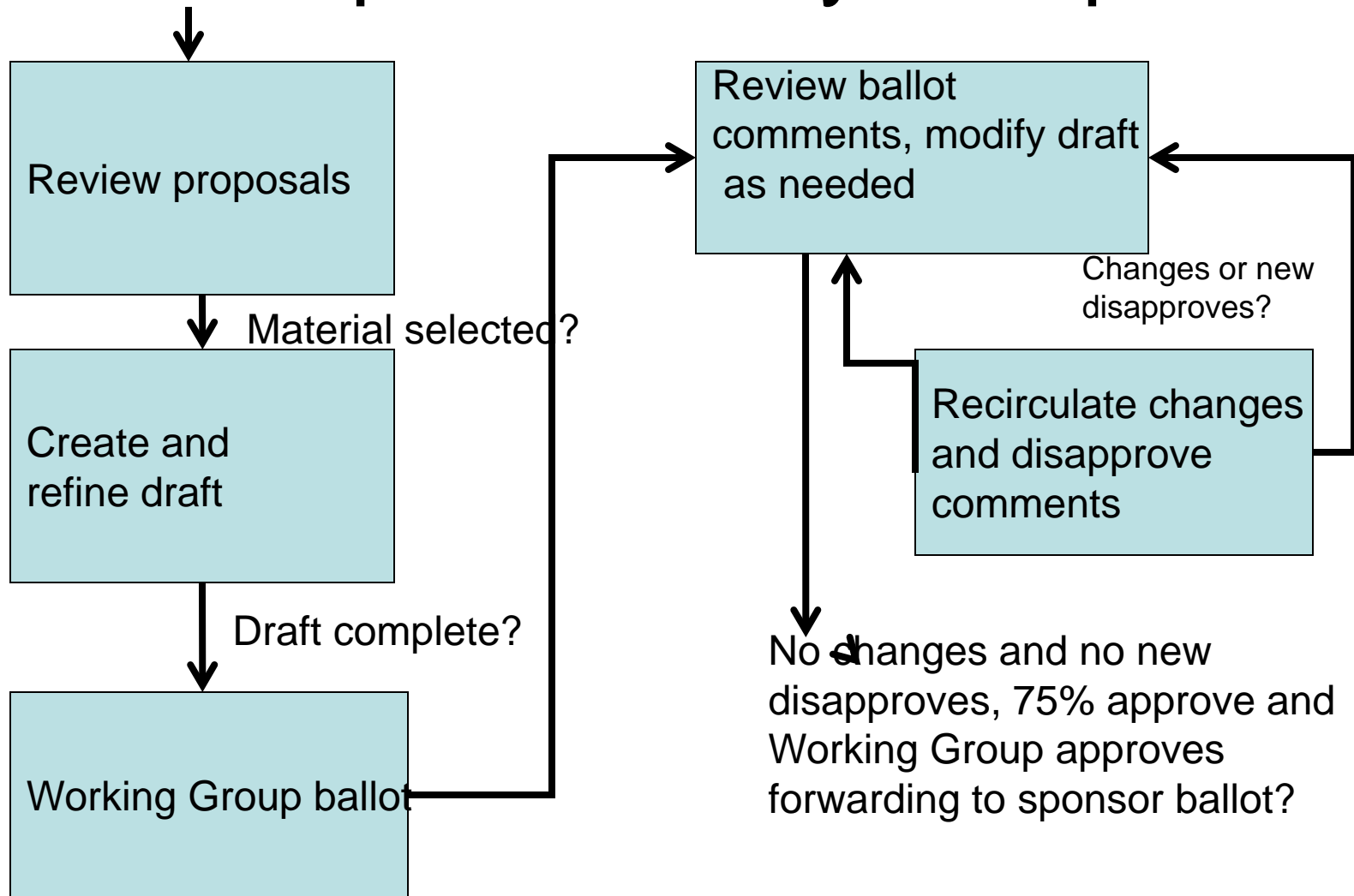


IEEE 802 Five Criteria

- Broad Market Potential
- Compatibility
- Distinct Identity
- Technical Feasibility
- Economic Feasibility

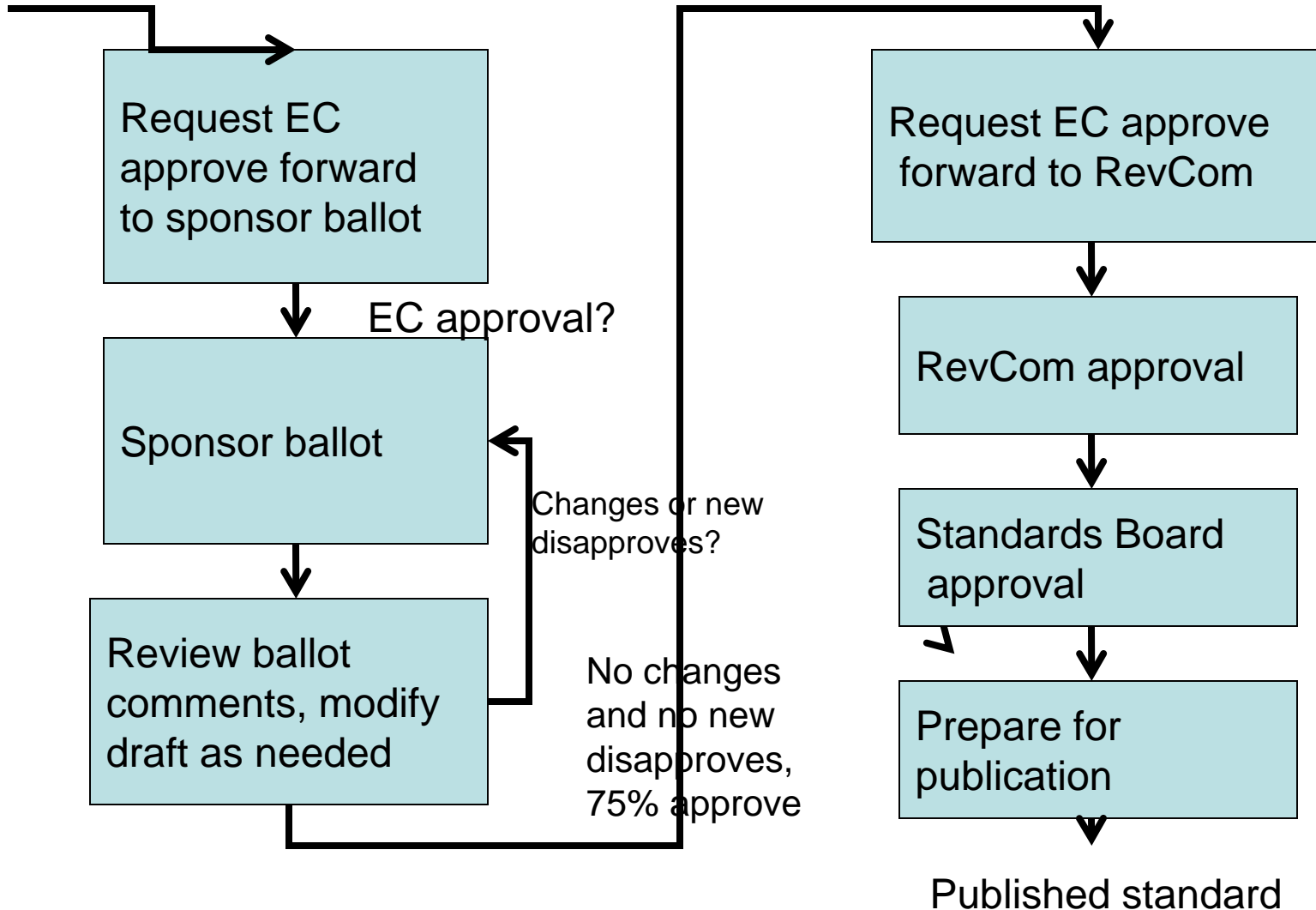


IEEE 802 standards development life cycle – part 2





IEEE 802 standards development life cycle – part 3





Standards life cycle – part 4

And then there is maintaining the standard

- Respond to request for interpretation
- Keep the standard current by producing amendments and corrigenda (corrections)
- Renew the life of the standard with reaffirmation or revision
- When the standard is out of date, withdraw it.



Voting and membership

- Voters have responsibility to vote on letter ballots
- Three levels of voting occur in IEEE 802 standards development:
 - Sponsor ballot
 - Open to all interested parties
 - Via IEEE SA-membership or paying a per ballot fee
 - Participation requires an IEEE Web Account
 - Working group
 - Requirements on next page
 - Task force or task group
 - Requirements vary – consult Working group.



Acquiring Working Group voting membership

- Participating at a meeting = at least 75% presence.
- For a new Working Group, persons participating in the initial meeting become members.
- For an existing Working Group, after attending 2 of last 4 plenary sessions or 1 plenary and 1 interim, membership starts at the next plenary attended.
 - May require submitting a letter of intent.



Retaining Working Group voting membership

- Participate in 2 of the last 4 plenary sessions.
 - An interim may substitute for one of the 2 plenary sessions.
- Return working Group letter ballots
 - Membership may be lost for failing to respond or responding abstain for reason other than “lack of technical expertise” to 2 of the last 3 ballots.



Affiliation

- IEEE-SA Standards Board By-Laws, Section 5.2.1.5
–(<http://standards.ieee.org/guides/bylaws/sect5.html>)
- Disclosure of Affiliation
 - “Every member and participant in a working group, Sponsor ballot, or other standards development activity shall disclose his or her affiliation.”
- What is “Affiliation”
 - “An individual is deemed "affiliated" with any individual or entity that has been, or will be, financially or materially supporting that individual's participation in a particular IEEE standards activity. This includes, but is not limited to, his or her employer and any individual or entity that has or will have, either directly or indirectly, requested, paid for, or otherwise sponsored his or her participation.”
- Affiliation and participation
 - “Failure to disclose every such affiliation may result in complete or partial loss of rights to participate in IEEE-SA activities. An individual is not excused from compliance with this policy by reason of any claim of a conflicting obligation (whether contractual or otherwise) that prohibits disclosure of affiliation.”



Ground rules

- Respect ... give it, get it
- NO product pitches
- NO corporate pitches
- NO prices
- NO restrictive notices – presentations must be openly available
- Silence your cell phone ringers



IEEE Patent policy see the slide set

at: <http://standards.ieee.org/board/pat/pat-slideset.ppt>



Getting more information



Resources

- IEEE 802 home page:
 - <http://www.ieee802.org>
- IEEE 802 chairs, etc.
 - <http://www.ieee802.org/wgchairs.shtml>
- Links to IEEE and IEEE 802 procedural documents:
 - <http://www.ieee802.org/devdocs.shtml>
- Links to IEEE 802 WG and TAG pages:
 - <http://www.ieee802.org/dots.shtml>
- Links to these slides and IEEE 802 orientation
 - <http://ieee802.org/orientation.shtml>