

Proposal update for the May 2025 interim meeting in Rennes, France

Christophe Mangin

2024/7/12

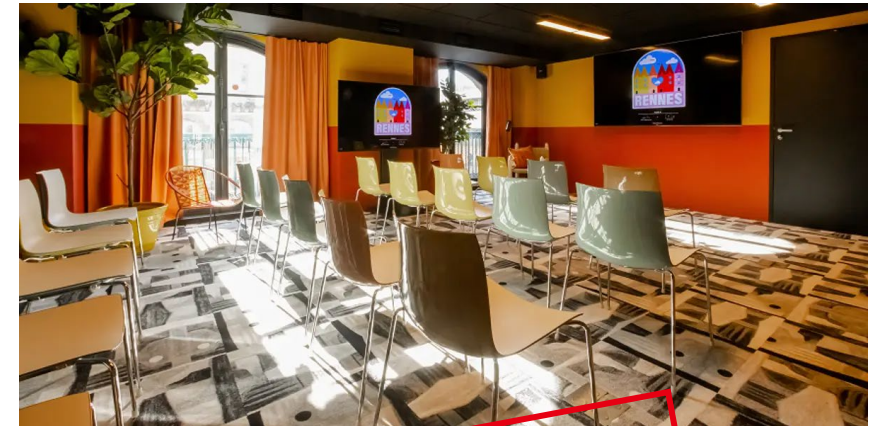
MITSUBISHI ELECTRIC R&D CENTRE EUROPE

- MAMA Shelter Hotel ****
 - May 17 to May 25, 2025
 - Room block
 - 40 rooms (“medium”)
 - Blocked from Jan 17 until Apr 17
 - Price (incl. breakfast)
 - Single occupancy : 174€
 - Double occupancy : 189€
 - Tourist tax : 1,98€ /pax/night
 - Price guaranteed, upon availability, up to May 10
 - Public retail price after May 10
 - Cancellation policy
 - Free of charge up to May 14, 6pm (CET)
 - Full charge after May 14
 - Location
 - Place de la Trinité / Place des Lices
 - In city center
 - Walking distance from all points of interest and restaurant areas

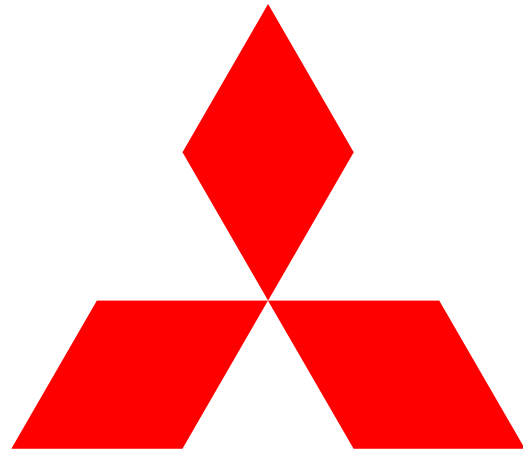


Registration information

- Fees
 - Early : 700-750€ (provisional)
 - Standard : TBC
 - Late/on-site : TBC
 - Refund :TBC
 - Deadlines : TBC
 - Includes meeting rooms, network, A/V, lunch, morning/afternoon breaks
 - On-site/remote attendance support
- 3 meeting rooms
 - 110m², 60m², 40m²
- Lunch
 - 3-course menu
 - Buffet style, 2 options per dish
 - Monday to Friday
- Morning and afternoon breaks
 - Savory and sweet snacks, fruits, hot/cold drinks
- Optional social event
 - Food and drinks at the hotel's rooftop bar
 - Other options under consideration



The hotel cannot not guarantee their ability to block the meeting rooms as planned so far, if the on-site attendance is too low e.g., less than 25 persons

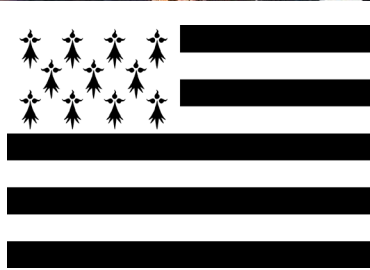


**MITSUBISHI
ELECTRIC**

Changes for the Better

Welcome to Rennes

- Capital of Brittany



Travel to Rennes

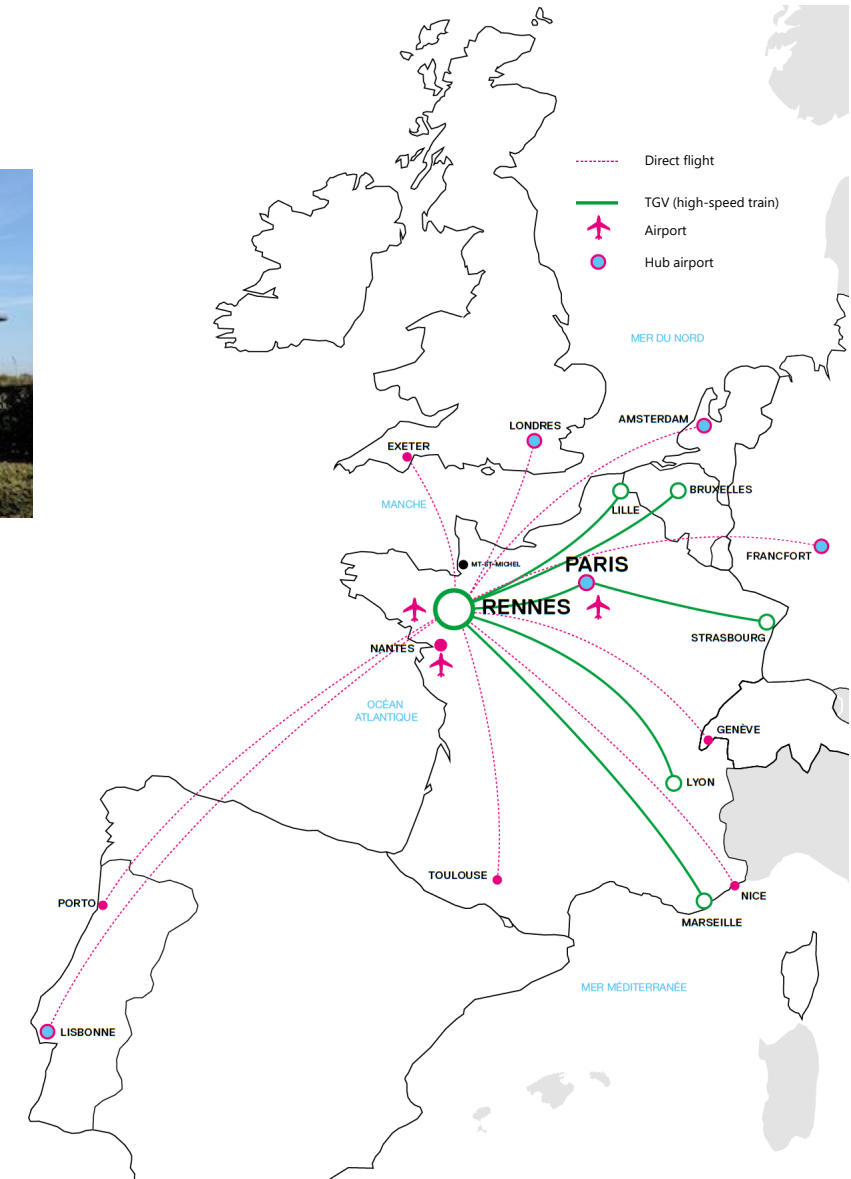
- Plane

- Paris-CDG : 45min
- London : 1h
- Amsterdam : 1h30
- Frankfurt : 1h30



- Train (TGV)

- Paris : 1h30
- Paris-CDG : 2h45



Points of interest around Rennes

- Saint-Malo



- Mont-Saint-Michel



- Further West into Brittany...

<https://youtu.be/qWgJfVboKgo>
<https://www.brittanytourism.com/>

