

802.4L/87-012

NEC

NEC Corporation

Tamagawa Plant
1753, Shimonumabe,
Nakahara-ku
Kawasaki, Kanagawa 211, Japan

Telephone: (044) 433-1111
Telex: NECTOK J22686

Date : July 9, 1987
To : David J. Greenstein, Chairman IEEE 802.4L
From : TOSHIO SAITO *Toshio Saito*
Subject : About my investigation for your request at New Orleans.
C/C : Chandos A. Rypinski

Attached is the short document that shows the optical atmospheric transmission equipment.

There is no more information about the experimental data of the transmission characteristic.

I regret that I found no information about the data terminal equipment where the optical atmospheric transmission technique were applied.

802.4L /
87-012

Atmospheric Laser Communications Equipment

NEC has developed a portable laser transmitter/receiver, LE-9102 T/R, with the technical advice of NHK (Japan Broadcasting Corporation).

It transmits one video and one audio signal via a laser beam. Using a laser diode as the optical source, it is compact and light on account of its good coupling efficiency even to a transmission optics of small diameter.

The new transmitter/receiver adopts a novel modulation technique PIM (Pulse Interval Modulation) to drive the laser diode. PIM permits smaller circuit size and lower power consumption than PCM, to achieve good quality for wide band analog signal transmission. This PIM technique is used in signal conversion of both video and audio signals to pulse stream. Other features of a laser atmospheric transmission system are: capability of parallel transmissions in a limited area, resistance to interference from other radio waves, and ease of installation.

LE-9102 T/R laser transmitter/receiver has a wide range of applications such as ENG (Electronic News Gathering), ITV system for security, CATV system, and so on.

Millimeter Wave and Video Communications Development Laboratory

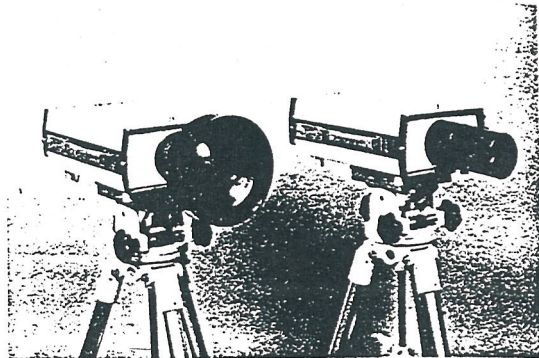


Photo 1 LE-9102 T/R laser transmitter (right) and receiver.

* * * * *

Super Minicomputer MS190

The super minicomputer MS190 was announced in January, 1982 as the high end machine of the minicomputer MS series. The MS190 was developed to provide a three to four times improved performance over the former high end unit, the MS70. Some of the MS190's remarkable features are as follows:

The MS190 has 32 bit general registers and instruction set, which makes possible 32 bit processing, keeping upward compatibility with the current minicomputers, MS30, MS50, and MS70.

The capacity of the main memory can be increased up to 16 Mbytes. Thirty-seven addressing methods are supported for the addressing mode. Many advanced new technologies and

devices are adopted, such as connection of up to three high-speed standard 32 bits buses, a 4-way interleaved main memory, a cache memory with 32 Kbytes capacity, pipeline-processing, Current Mode Logic (CML) with 0.5 nsec delay per gate, CML-LSI with 1200 gates per chip, 64K RAM chips and others.

Scientific Instruction Processor (SIP), for high-speed processing of floating point arithmetic, and Vector Instruction Controller (VIC), for high-speed processing of vector arithmetic, are provided optionally.

Computer Engineering Division

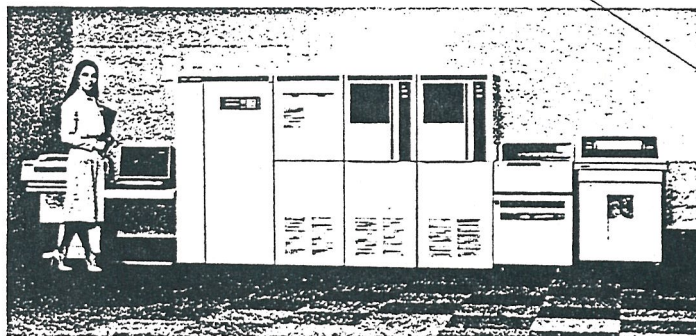


Photo 1 Super minicomputer MS190.

TECHNO

JAPAN

Vol.20 No.2
Feb. 1987

¥2,500

Formerly **TECHNOCRAT**

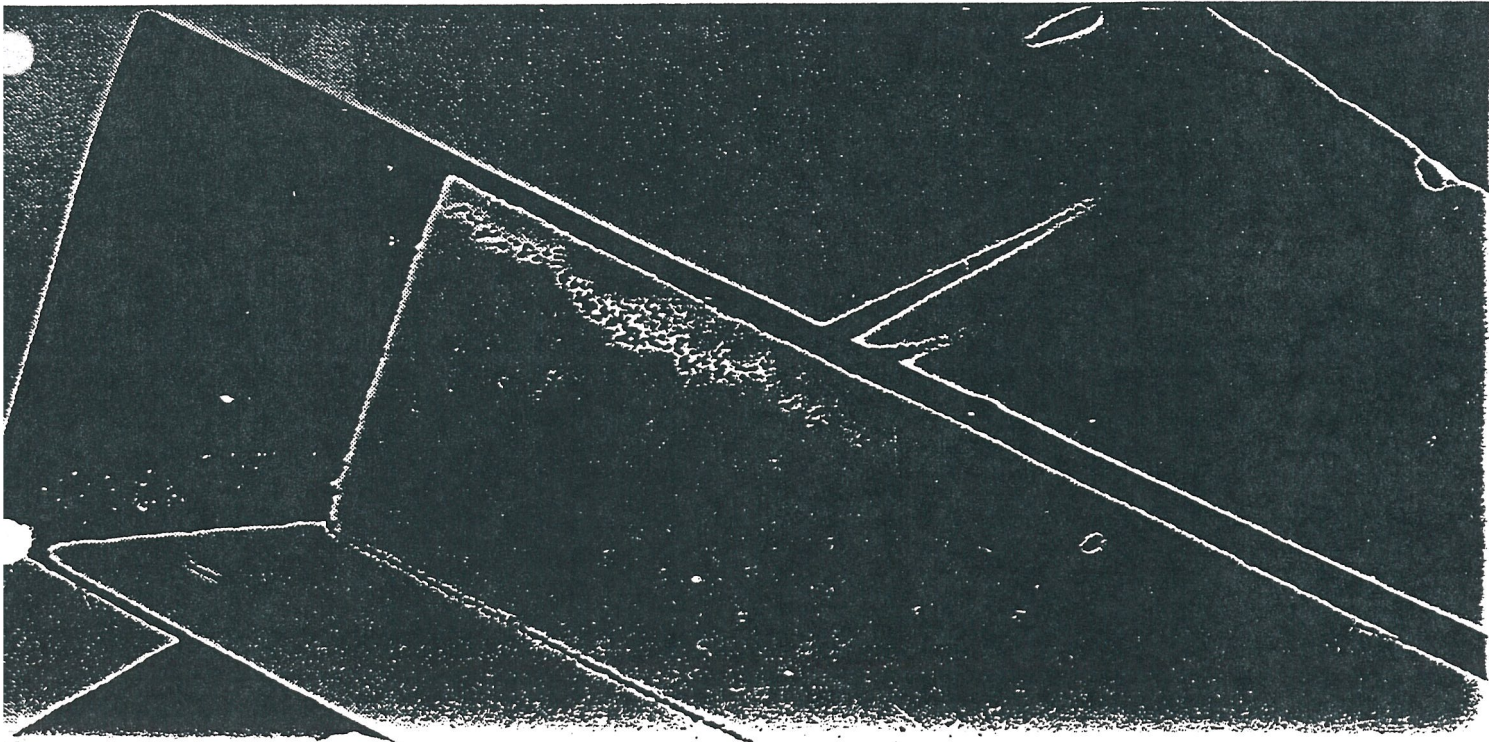
Monthly Review of Japanese Technology and Industry

Epoxy Resin Substrate for Computer-Use Optical
Memory Disks

Stamping Technology — Drawing and Forming IV —

Reactor Dismantlement Has Begun

Plan for Teleterminal System



TECHNO JAPAN

Vol.20 No.2
Feb. 1987

Editorial Advisory Board

Prof. Hideo Aiso	: Keio University
Prof. Jun Akaoka	: Tamagawa University
Dr. Masako Yamadaya	: Technical Advisor
Prof. Masao Kametaka	: University of Tokyo
Prof. Junji Kihara	: University of Tokyo
Prof. Keizaburo Kubo	: University of Tokyo
Dr. Yoshiro Masuda	: Technical Advisor
Prof. Takuya Nomura	: Sophia University
Prof. Yasushi Oyanagi	: Kogakuin University
Prof. Tadashi Sato	: Tsukuba University
Mr. Hiroshi Sawabe	: Technical Advisor
Mr. Hajime Inaba	: Technical Advisor
Dr. Shigeru Suzuki	: Technical Advisor
Prof. Takeshi Yasui	: Kanazawa University

TECHNO JAPAN VOL.20 No.2 Feb., 1987

Published Monthly by

FUJI MARKETING RESEARCH CO., LTD.

7F Daini Bunsei Bldg., 11-7, Toranomon
Chome, Minato-ku, Tokyo 105, Japan
Tel: 03-508-0051~4 Fax (03) 592-0648

Copyright ©: No part of this publication may be reproduced, stored in a retrieval system, or transmitted, in any form or by any means, electronic, mechanical, photocopying, recording, or otherwise, without the prior written permission of the publishers.

Editor in Chief	Takuji Yamane
Editor	Keiji Hayashi
Associate Editor	Junko Tsuyama
	Chizuru Shibata
Art Director	Prof. Yuji Isa
Assistant	Rei Hidaka
Publisher	Keiji Hayashi

One copy ¥2,500

1 Year Surface Mail ¥24,000

Air Mail ¥32,000 (Asia & Oceania)

¥34,000 (North & Central America)

¥36,000 (Europe & other areas)

TECHNO JAPAN Vol.20-No.2, Feb. 1987

CONTENTS

Editor's Note	2
Technical Cooperation	3

FEATURES

□ Epoxy Resin Substrate for Computer-Use Optical-Memory Disks	7
□ Stamping Technology – Drawing and Forming IV –	14
□ Reactor Dismantlement Has Begun	23
□ Teleterminal System To Be Developed	32

MAIN TOPICS

□ MOS-1 Launched – Satellite With Three Axis Control System for Earth Observation	42
□ JEM Moch - UP Completed	48
□ New JRR-3	52
□ Flying Robot	55
□ Dynamic Mass-measurement under Weightless Condition	57
□ Organic Molecular Beam Epitaxy	60
□ Scanning Tunneling Microscopes Being Developed	61
□ Production of Feed from the Fermentation of Biomass	65

Research Institute in Japan

□ NRCDP, National Research Center for Disaster Prevention, Science and Technology Agency	67
□ Kajima Institute of Construction Technology	71

INDUSTRY & TECHNOLOGY

BASIC INDUSTRIES

Energy	74
Steels & Metals	76
Ceramics & Material Science	78

MACHINERY INDUSTRIES

Miscellaneous Machines	80
Precision Engineering & Fine Finishing	82
Factory Automation	84
Transportation & Material Handling	86

ELECTRONICS INDUSTRIES

Electronic Devices	88
Telecommunications	90
Information Processing	92
Office Automation	94
Home Automation & Broadcasting	96
Electronics Instruments	98
Medical Engineering	100
Electronic Machine Manufacturing & Assembly	102

CHEMICAL INDUSTRIES

Chemicals	104
Polymers	106
Fine Chemicals	108
Biotechnology	110

SYSTEMS INDUSTRIES

Disaster Prevention	112
Agribusiness	114
Monthly Economic Report	5
Economic Indicators	116
Daily Record: January 1987	120

Running Control of a Self-Controlled Vehicle

National Mechanical Engineering Laboratory is developing an auto-mobile communication system which employs weak waves and controls the movement of the vehicles which are connected without physical contact by means of digital communication respectively.

Non-contact connection of mobile communication is defined as vehicles which mutually exchange information necessary for running to produce an effect on each other. Separation is also carried out automatically. The vehicles equipped with this system have the ability to locate their position and to measure their direction, as well as the capacity to navigate with the help of a map stored in the system. A typical example of such a vehicle is the automatic guided vehicle (AVG).

The vehicle used in the study of the system is an AVG having a dead recognizing function and navigation function used in intelligent vehicles (unmanned control passenger car).

The aim of the non-contact connected vehicle system is to improve the efficiency of transport systems through the increase in traffic density. This system is not only applicable to in factory conveyance systems. It is also applied in highway automation as an elemental technology such as follow-up driving, route guidance, crash prevention, etc.

Communication between the non-contact connected vehicles is divided into two categories: macroscopic and microscopic information. Macroscopic information includes route, destination, and work to be finished on the way. Micro-information comprises the location and the speed of the vehicles. In this system, each vehicle communicates with the control center at various key points of the route. Therefore, the road-vehicle communication equipment is mounted on the vehicle.

The vehicle is controlled by a steering control and speed control. The speed control algorithm is formulated as an LQ problem (regulator question). The aim of the speed control is to maintain a predetermined distance between the car and the following car. The information necessary for the control is derived from a predetermined distance (0.9m) and its differential time.

Fig.1 and Fig.2 show the results of simulation. Fig.4 shows the optical communication system fabricated on trial by MEL. Fig.5 shows its modulation unit.

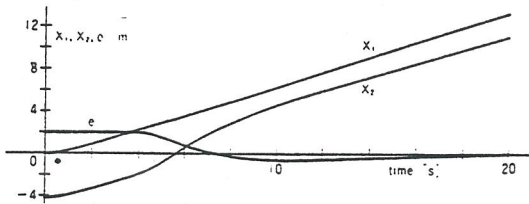


Fig. 1. Speed control of two cars by bidirectional communication

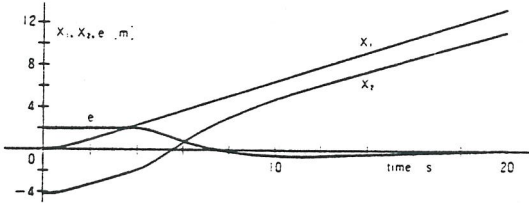


Fig. 2. Speed control of unidirectional communication

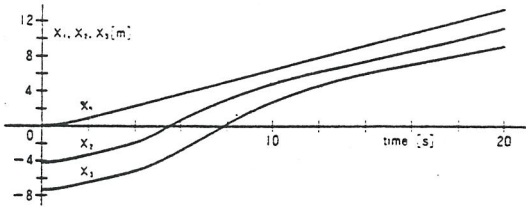


Fig. 3. Speed control of three cars by unidirectional communication

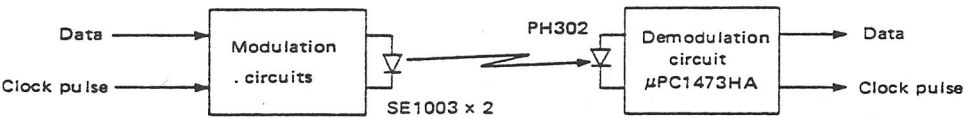


Fig. 4. Optical communication system

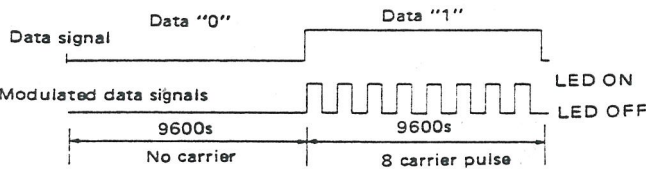


Fig. 5. Modulation system

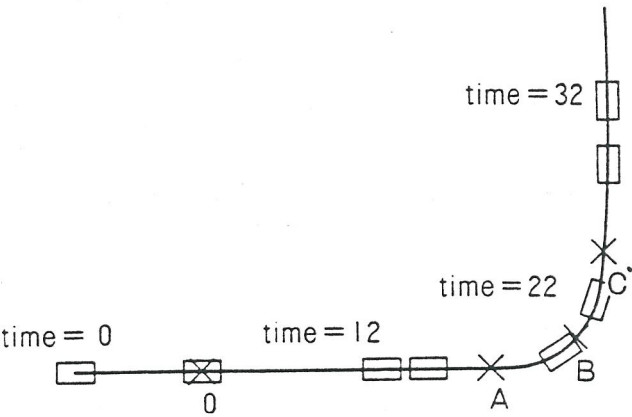


Fig. 6. Steering control for 90° turning to left of two cars