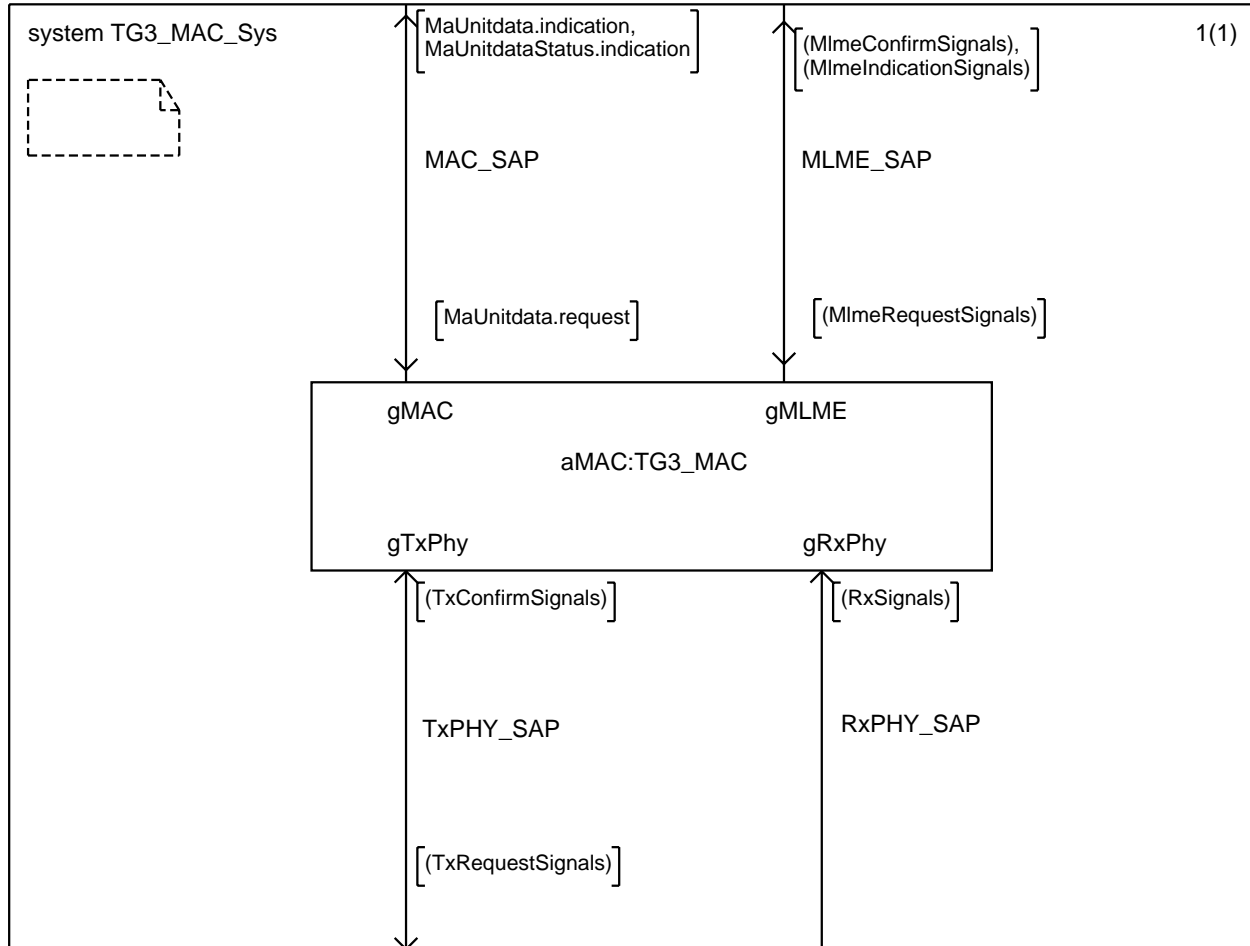

IEEE P802.15
Wireless Personal Area Networks

Project	IEEE P802.15 Working Group for Wireless Personal Area Networks (WPANs)		
Title	TG3 MAC architecture SDL		
Date Submitted	[6 December 2000]		
Source	[Allen Heberling] [Eastman Kodak Company] [4545 East River Road Rochester, NY 14650-0898 USA]	Voice: [+1 716 781 9328] Fax: [+1 716 781 9733] E-mail: [allen.heberling@kodak.com]	
Re:	[]		
Abstract	[Post Session #9/Tampa baseline for MAC Sublayer discussions.]		
Purpose	[This contribution is a of a TG3 MAC architecture SDL [TG3_MAC_Arch.pdf] which was part of the discussion during the TG3 MAC committee con-call 5Dec00 at 11:00am CST. The following is an updated draft version of the architecture file I sent out 5Dec00. The differences between this version and the one yesterday are: 1) this one has an official document number: -00/408r0 2) signal route names and gate names were added to the diagram.]		
Notice	This document has been prepared to assist the IEEE P802.15. It is offered as a basis for discussion and is not binding on the contributing individual(s) or organization(s). The material in this document is subject to change in form and content after further study. The contributor(s) reserve(s) the right to add, amend or withdraw material contained herein.		
Release	The contributor acknowledges and accepts that this contribution becomes the property of IEEE and may be made publicly available by P802.15.		

use TG3_MACpkg;





package TG3_MACpkg

1(1)

