

Preparation Update of IEEE 802.16 Interim Session #57 in Kobe - Japan

IEEE 802.16 Presentation Submission Template (Rev. 9)

Document Number: **IEEE S802.16-08/014r1**

Date Submitted: 2008-07-17

Source:

Mitsuo Nohara
KDDI R&D Labs.
3-10-10, Iidabashi, Chiyoda-ku
Tokyo 102-8460 Japan

Voice: +81 3 6678 6128

E-mail: mi-nohara@kddilabs.jp

*<http://standards.ieee.org/faqs/affiliationFAQ.html>>

Venue:

IEEE 802.16-04/067

IEEE C802.16-07/027

Base Contribution:

IEEE C802.16-08/014, updates to the session proposal: IEEE C802.16-07/027 (2007-11-15)

Purpose:

Update the preparation status of IEEE 802.16 Interim Session #57 in Kobe, Japan, revised with some information updates

Notice:

This document does not represent the agreed views of the IEEE 802.16 Working Group or any of its subgroups. It represents only the views of the participants listed in the "Source(s)" field above. It is offered as a basis for discussion. It is not binding on the contributor(s), who reserve(s) the right to add, amend or withdraw material contained herein.

Release:

The contributor grants a free, irrevocable license to the IEEE to incorporate material contained in this contribution, and any modifications thereof, in the creation of an IEEE Standards publication; to copyright in the IEEE's name any IEEE Standards publication even though it may include portions of this contribution; and at the IEEE's sole discretion to permit others to reproduce in whole or in part the resulting IEEE Standards publication. The contributor also acknowledges and accepts that this contribution may be made public by IEEE 802.16.

Patent Policy:

The contributor is familiar with the IEEE-SA Patent Policy and Procedures:

<http://standards.ieee.org/guides/bylaws/sect6-7.html#6> and <http://standards.ieee.org/guides/opman/sect6.html#6.3>.

Further information is located at <http://standards.ieee.org/board/pat/pat-material.html> and <http://standards.ieee.org/board/pat>.

Preparation Update of IEEE 802.16 Interim Session #57 in Kobe - Japan



Session: #57 IEEE 802.16WG Interim Session
Venu: Hotel Okura Kobe, Kobe, Hyogo, Japan
http://www.svc-net.com/ieee80216_kobe/

***Kobe is one of the beautiful and scenic harbor cities in Japan, within easy access from Kansai International, Osaka International and Kobe Airports.**

Dates: Tue. 16- Fri. 19 September, 2008

Host: KDDI Corp. as a primal host.

Supporters: Intel, KDDI, Fujitsu Group, Hitachi, Mitsubishi Electric, NEC, ACCA Networks, Motorola Japan, Samsung Japan, Sumitomo Electric Networks

Meeting facilities: Meeting rooms booked.

Room assignment plan: as defined in Annex A.

Accommodation: Hotel rooms available, with capacity of 250.

Pre-booking hotel fee: ¥21,000 (\$200, @105¥/\$) incl. breakfast, service charge and a 5% consumption tax. An alternative of Hotel New Otani Kobe Harborland is also provided on the hotel registration Web site.

See Annex A, the Checklist.

Annex A: Checklist to Accompany IEEE 802.16 Interim Session Proposals (1/2)

- | | |
|---|---------------------|
| • Individual Host (normally a Working Group Member) | Mitsuo Nohara |
| • Corporate Host or Hosts | KDDI |
| • Additional Corporate Supporters | As Listed |
| • City | Kobe, Japan |
| • Hotel | Hotel Okura Kobe |
| • Dates | 16-19 Sept. 2008 |
| • Does Corporate Host agree to accept any financial loss? | Yes |
| • Does Corporate Host agree to turn over any financial surplus? | Yes |
| • Advance Registration Fee | ¥48,000 |
| • Advanced Registration cutoff date | 15 Aug. 2008 |
| • Registration Fee after the cutoff date | ¥72,000 |
| • Hotel status (reserved? contract offered?) | Reserved |
| • Number of sleeping rooms offered in block | 250 |
| • Sleeping Room cutoff date | 22 Aug. 2008 |
| • Sleeping Room Rate | ¥21,000* |
| • Will the Host provide a registration desk? | Yes |
| • Will the Host maintain a list of paid registrants? | Yes |

Note: *: incl. breakfast, service charge and a 5% consumption tax.

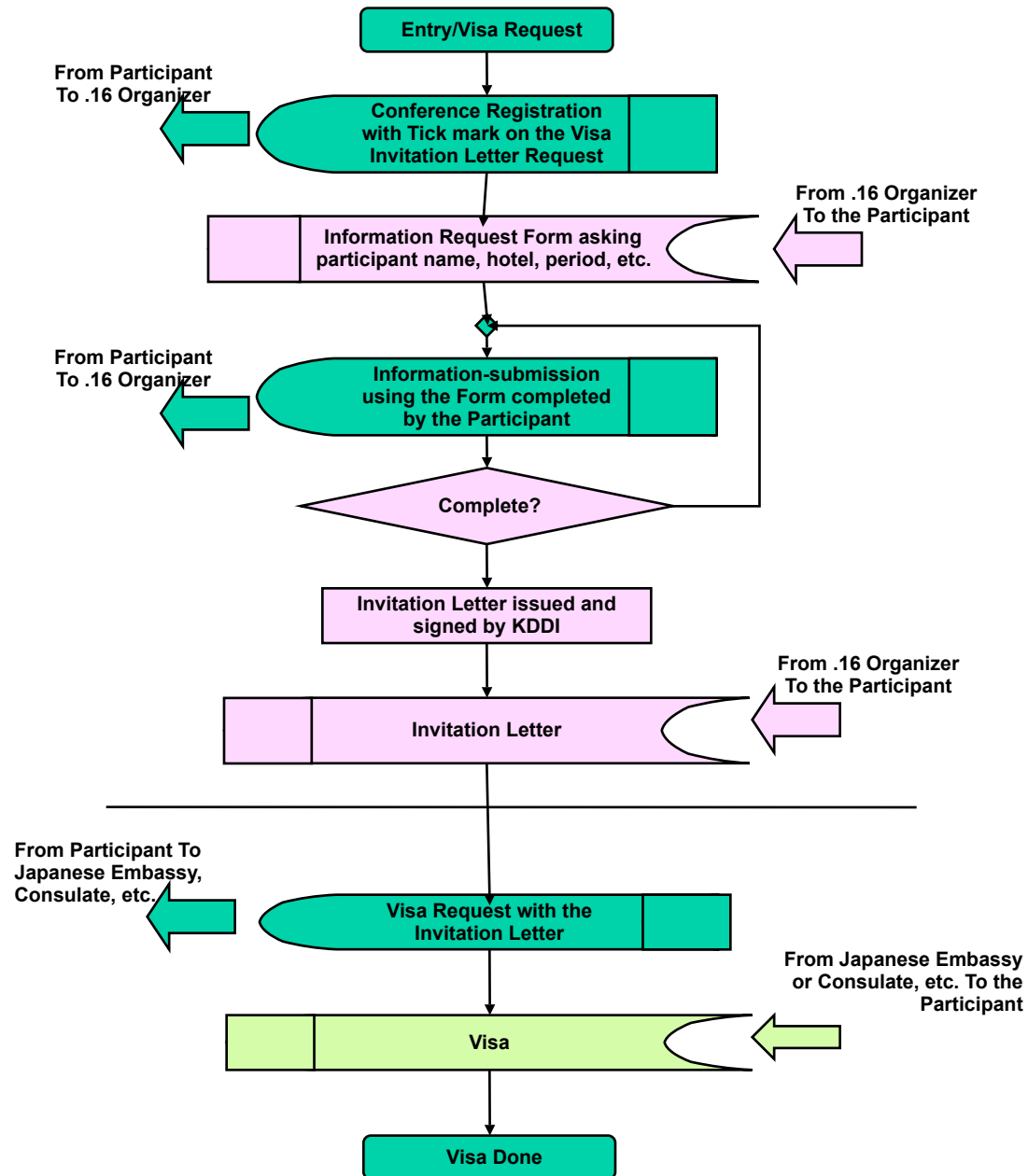
*An alternative, Hotel New Otani Kobe Harborland is also provided on the registration web-site.

Annex A: Checklist to Accompany IEEE 802.16 Interim Session Proposals (2/2)

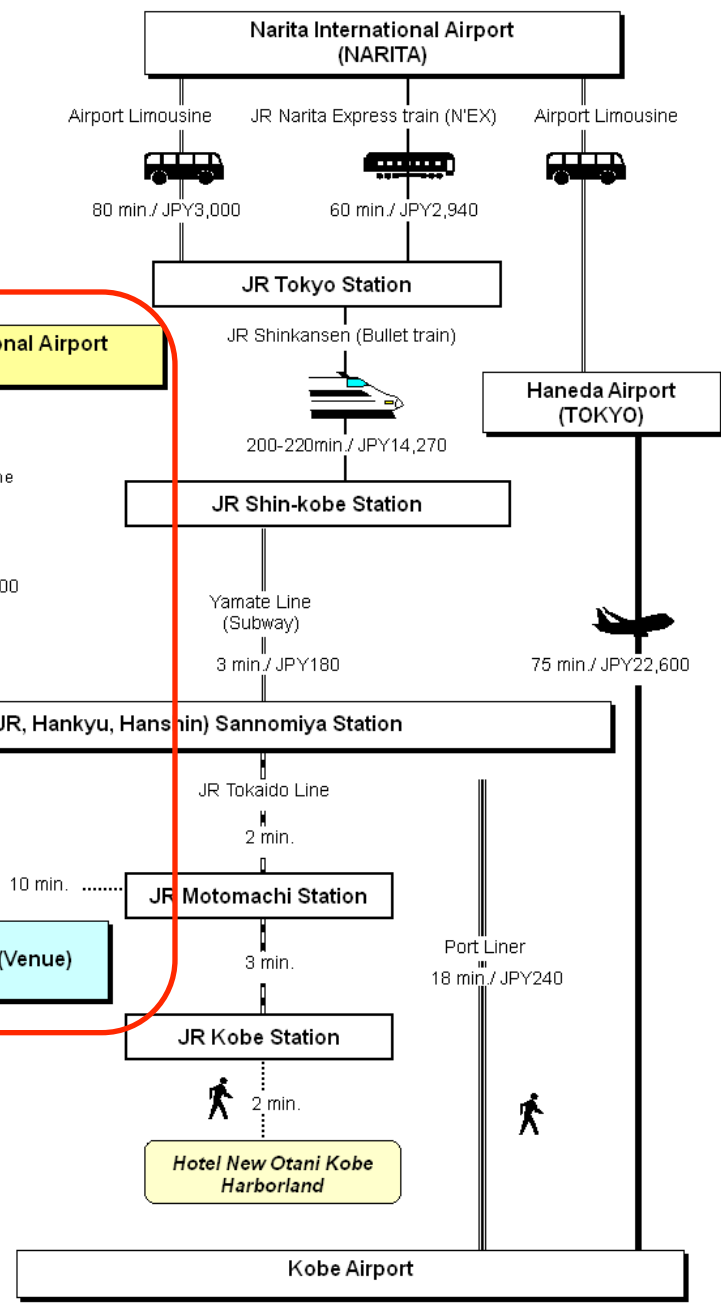
- Will breakfast and coffe/tea/snack breaks be included?
Coffee/tea/snack breaks included
- Will lunches be included in the registration fee? **Yes**
- Will the Host sponsor (pay for) a social event? **Yes**
- Will the Host sponsor (pay for) any other functions or features? **TBD**
- Will classroom-style meeting rooms be included? **Yes**
- What are the seating capacities of the meeting rooms?
400 x 1 / 100 x 2 / 40 x 1 / 20 x 1
- Is hotel currently holding these rooms for the group? **Yes**
- Will all meeting rooms be available both day and night? **Yes**
- Will Internet connectivity be provided? **Yes**
- Will wireless LAN access be provided? **Yes**
- Will a local server be provided? **TBD**
- Will the Host provide network technical support? **Yes**
- *Special features: describe in separate contributed document* **–**

Note: *: Those details are subjects to change.

Visa Invitation Letter Process for #57 Session, Kobe, Japan



Access to Kobe



Osaka International Airport (Itami)

40 min. by Airport Limousine

Between Sannomiya Station and Hotel Okura Kobe, the courtesy shuttle bus is also available, running every 20 min.

<https://act.jtbgmt.com/gmt/ssl/IEEE802.16.ASP>



Access to the Site

Note

- A session calendar of Tue. 16-Fri. 19 Sept., 2008, will be applied.
- Tue. Morning to start, Friday noon to finish -

Date	AM	PM	Eve.
Mon. 15 Sept.	*Japanese	National	Holiday
Tue. 16 Sept.	Session	Session	(if required)
Wed. 17 Sept.	Session	Session	(if required)
Thu. 18 Sept.	Session	Session	Social
Fri. 19 Sept.	Session		
Total	4hx4=16	5hx3=15	31+(3x2)=37

*From Kansai Intl. Airport, you may take late Friday Afternoon flight to San Francisco (UA), Vancouver (CA), Beijing, Shanghai, Seoul, Hong Kong, Singapore, Sydney, etc.

The on-line registration is now ready at:
<http://www.wirelessman.org/meetings/mtg57/index.html>
am looking forward to seeing you in Kobe.

Yokoso!

