

Proposal to host IEEE 802.16 Session #69 in St. Petersburg, Russia

IEEE 802.16 Presentation Submission Template (Rev. 9)

Document Number:

IEEE S802.16-09/0021

Date Submitted:

2009-11-19

Source:

Max Kumskoy
Yota, Scartel Ltd.
SaintPetersburg, Russia

E-mail: mkumskoy@yotateam.ru

Venue:

Proposal to host IEEE 802.16 September 2010 Interim Session #69 in St. Petersburg, Russia

Base Contribution:

IEEE C802.16-09/0021

Purpose:

Proposal to host the IEEE 802.16 Session #69 in St. Petersburg, Russia

Notice:

This document does not represent the agreed views of the IEEE 802.16 Working Group or any of its subgroups. It represents only the views of the participants listed in the "Source(s)" field above. It is offered as a basis for discussion. It is not binding on the contributor(s), who reserve(s) the right to add, amend or withdraw material contained herein.

Release:

The contributor grants a free, irrevocable license to the IEEE to incorporate material contained in this contribution, and any modifications thereof, in the creation of an IEEE Standards publication; to copyright in the IEEE's name any IEEE Standards publication even though it may include portions of this contribution; and at the IEEE's sole discretion to permit others to reproduce in whole or in part the resulting IEEE Standards publication. The contributor also acknowledges and accepts that this contribution may be made public by IEEE 802.16.

Patent Policy:

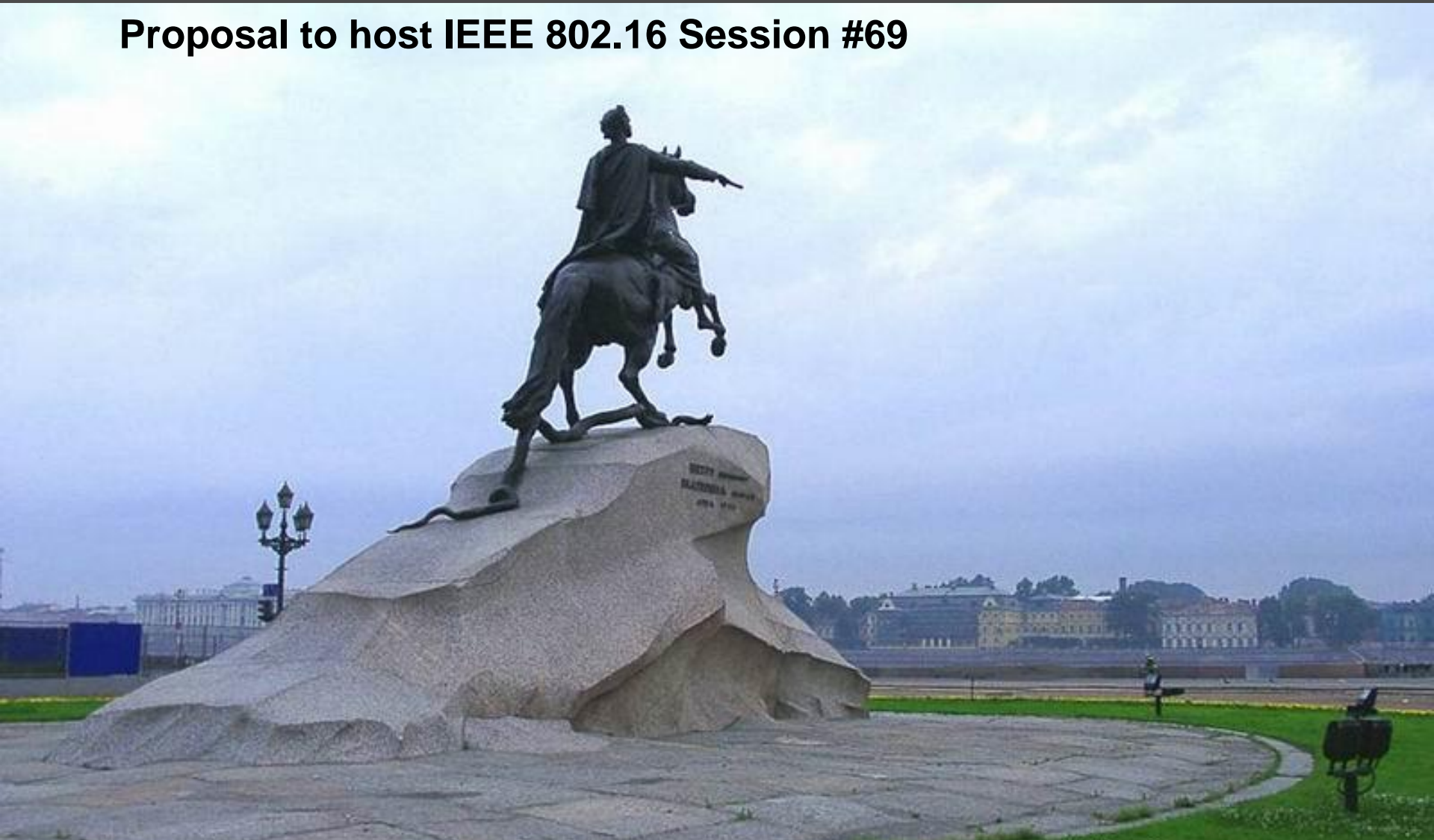
The contributor is familiar with the IEEE-SA Patent Policy and Procedures:

<<http://standards.ieee.org/guides/bylaws/sect6-7.html#6>> and <<http://standards.ieee.org/guides/opman/sect6.html#6.3>>.

Further information is located at <<http://standards.ieee.org/board/pat/pat-material.html>> and <<http://standards.ieee.org/board/pat>>.

Saint Petersburg, Russia

Proposal to host IEEE 802.16 Session #69



Host

- ❑ Yota is the first Russian Mobile WiMAX operator
 - ❑ use of 2.5 GHz band
 - ❑ Already deployed in Moscow, St. Petersburg, Ufa, Sochi and Krasnodar.
 - ❑ Constructing 4G networks in Belarus, Nicaragua and Peru.
 - ❑ IEEE 802.16m is currently under testing
- ❑ Yota has significant success in User Equipment development
 - ❑ The very first WiMAX/GSM communicator (HTC MAX 4G)
 - ❑ Offers wide range of laptops, USB-dongles and CPE from major vendors
- ❑ Yota is a member of WiMAX Forum board of directors
- ❑ Website: <http://yota.ru/en/>

Saint Petersburg, Russia



- ❑ Famous for high art, gorgeous architecture, an extraordinary history and rich cultural traditions
- ❑ September average high 15C(59F), low 9C(48F)
- ❑ Local time: GMT+3
- ❑ Airport: Pulkovo 2 (LED) 15km away from city center
 - ❑ AirFrance, Lufthasa, KLM, LOT, Rossiya Airlines

Proposed dates for IEEE 802.16 Interim Session #69

Dates: from 13th to 16th of September, 2010
Monday 13th morning: Welcome Seminar & Yota demonstrations
Wednesday 15th : Off-site social event sponsored by Yota
Friday 17th : City tours

Venue: Saint-Petersburg, Russia
Hotel booked: from 12th to 17th of September, 2010

MON	TUE	WED	THU	FRI	SAT	SUN
		1	2	3	4	5
6	7	8	9	10	11	12
13	14	15	16	17	18	19
20	21	22	23	24	25	26
27	28	29	30			

Meeting Hotel: Park Inn Pribaltiyskaya



Sleeping rooms blocked – 300:

All rooms are equipped with

- individual climate control
- laundry
- dry cleaning and tailoring services
- Internet access



Meeting rooms:

- Big theater room for 600 seats
- 2 class-rooms of 200 seats
- 7 class-rooms from 40 to 80 seats



Room rate ~\$150 per day

Booked for: 12-17th September



Meeting Hotel Location

- ❑ Located on the Gulf of Finland
- ❑ 25 km from St. Petersburg Pulkovo II International Airport
- ❑ 2 km to the closest subway station
- ❑ 10 minutes drive to impressive city hotspots like The Hermitage and the Peter and Paul's Fortress
- ❑ Shuttle service to the city centre

14 Korablestroiteley Street
St. Petersburg 199226 Russia
T. +7 812 329 26 26
F. +7 812 356 60 94

info.pribaltiyskaya@rezidorparkinn.com



Meeting Hotel: Park Inn Pribaltiyskaya

Dining

❑ **Replica Restaurant** offers renowned Mediterranean cuisine as well as Russian specialties along with the only Stone Grill in St. Petersburg

❑ **The Three Moons restaurant** offers wide variety of Russian delicious dishes

❑ **Lounge Bar** has wireless Internet access and is an ideal meeting spot for an after-hours mixer or coffee with friends while enjoying live music or sporting events on large screens

Meetings

❑ Up to 600 people

❑ Theater and Class-room type seating

❑ Wired Internet in all rooms

❑ Stunning views of the Gulf of Finland

❑ The Fountain Lobby and Seafront Façade Hall are perfect for registrations, exhibitions, coffee breaks and receptions

Meeting Facilities

Room	Area, m. square	Class-room, seats	Theater, seats
Pushkin	141	60	100
Leningrad	695	300	600
North	505	-	450
Peterhoff	226	120	160
Pavlovsk	100	50	80
Blue	104	50	80
Red	104	50	80
Room-A	57	35	50
Kronshtadt	73	40	60
Pribaltiyskiy	1563	400	100

Food Functions

Morning

Continental breakfast

Coffee/tea break

Afternoon

Coffee/tea break with snacks

No lunch service provided

Possible to eat at on-site restaurants

Hotel will offer cash-based lunches

Wednesday, September 15th

Off-site Evening Social sponsored by Yota

Meeting Registration

Early registration fee (before 13th of August) \$400 (estimate) USD

Late registration fee (after 13th of August and on-site) \$500 (estimate) USD

Hotel Booking

Booking available on-line

Rates from \$150 USD

Flying to St. Petersburg, Russia

❑ Saint Petersburg has an International Airport Pulkovo II (Code: LED)

Connection flights from USA	Direct flights from Europe	Connection Flights from Asia	Domestic Airlines
New York(KLM,LOT)	London (Rossiya Airlines)	Beijing(Rossiya Airlines, Hainan Airlines)	Aeroflot
Los-Angeles (KLM,LOT)	Paris(Air France, Rossiya Airlines)	Hong Kong(Air China, KLM)	Rossiya
San-Francisco (KLM,LOT)	Berlin(Air Berlin)	Tokyo(Air France, Lufthansa)	S7
Portland (KLM,LOT)		Dubai(Rossiya Airlines)	SkyExpress

❑ Pulkovo Airport is within 25 km from the meeting Hotel.

<http://www.pulkovoairport.ru/eng/>

Visas and Invitations

Business Visas

To obtain a business visa the following documents should be submitted to the local Russian Consulate:

1. A completed visa application form
2. A valid passport
3. One passport size photo
4. An official letter of invitation (will be issued by Yota)
5. A cover letter with information on the traveler, destination, terms and purpose of the trip.
6. A money order or cashier's check payable to the Russian Embassy for visa processing.

The visa processing fees are:

For single entry visas are (non-EU citizens):
\$131 for 4-20 business days processing;
\$250 for 3 business days processing;

For single entry visas are (EU citizens):
\$50 for 1-10 business days processing;
\$100 for 1-3 business days processing;

Exact information can be obtained from your local Russian consulate

IEEE, Welcome to Saint Petersburg

