

Project	<b>IEEE 802.16 Broadband Wireless Access Working Group</b> < <a href="http://ieee802.org/16">http://ieee802.org/16</a> >	
Title	<b>message reported by SSs and share DB updating for neighbor discovery</b>	
Date Submitted	<b>2005-09-06</b>	
Source(s)	Wu Xuyong Huawei Huawei Industrial Base, Bantian, Longgang, Shenzhen 518129 P.R.C	Voice: +86-755-28971677 Fax: +86-755-28972045 <a href="mailto:wuxuyong@huawei.com">wuxuyong@huawei.com</a>
Re:	80216h-05_018 : Call for Contributions IEEE 802.16's License-Exempt (LE) Task Group. 2005-08-18	
Abstract	Define the messages for the SS report and the database content for the SS interference info	
Purpose	Consolidate the mechanism of neighbor discovery	
Notice	This document has been prepared to assist IEEE 802.16. It is offered as a basis for discussion and is not binding on the contributing individual(s) or organization(s). The material in this document is subject to change in form and content after further study. The contributor(s) reserve(s) the right to add, amend or withdraw material contained herein.	
Release	The contributor grants a free, irrevocable license to the IEEE to incorporate material contained in this contribution, and any modifications thereof, in the creation of an IEEE Standards publication; to copyright in the IEEE's name any IEEE Standards publication even though it may include portions of this contribution; and at the IEEE's sole discretion to permit others to reproduce in whole or in part the resulting IEEE Standards publication. The contributor also acknowledges and accepts that this contribution may be made public by IEEE 802.16.	
Patent Policy and Procedures	The contributor is familiar with the IEEE 802.16 Patent Policy and Procedures < <a href="http://ieee802.org/16/ipr/patents/policy.html">http://ieee802.org/16/ipr/patents/policy.html</a> >, including the statement "IEEE standards may include the known use of patent(s), including patent applications, provided the IEEE receives assurance from the patent holder or applicant with respect to patents essential for compliance with both mandatory and optional portions of the standard." Early disclosure to the Working Group of patent information that might be relevant to the standard is essential to reduce the possibility for delays in the development process and increase the likelihood that the draft publication will be approved for publication. Please notify the Chair < <a href="mailto:chair@wirelessman.org">mailto:chair@wirelessman.org</a> > as early as possible, in written or electronic form, if patented technology (or technology under patent application) might be incorporated into a draft standard being developed within the IEEE 802.16 Working Group. The Chair will disclose this notification via the IEEE 802.16 web site < <a href="http://ieee802.org/16/ipr/patents/notices">http://ieee802.org/16/ipr/patents/notices</a> >.	

## message reported by SSs and share DB updating for neighbor discovery

Wu Xuyong

wuxuyong@huawei.com

### Overview

In current working document 2.1.1, we now have a possible simple approach to make the initializing BS to get in touch with its neighbors, without any centralized server involved in this phase. That is, initializing BS can use the coexistence time slot to broadcast its IP address to the reachable SS which belong to other serving BS, and let the serving BS to contact the initializing BS using the IP network.

We need to define some message for the SSs to report the information to their serving OBS, when they have received from the IBS\_IPBC broadcasted by IBS. This contribution will propose some message features added in the REP\_REQ/RSP, and describe some updating work need to be done after the serving OBS receives the reporting message.

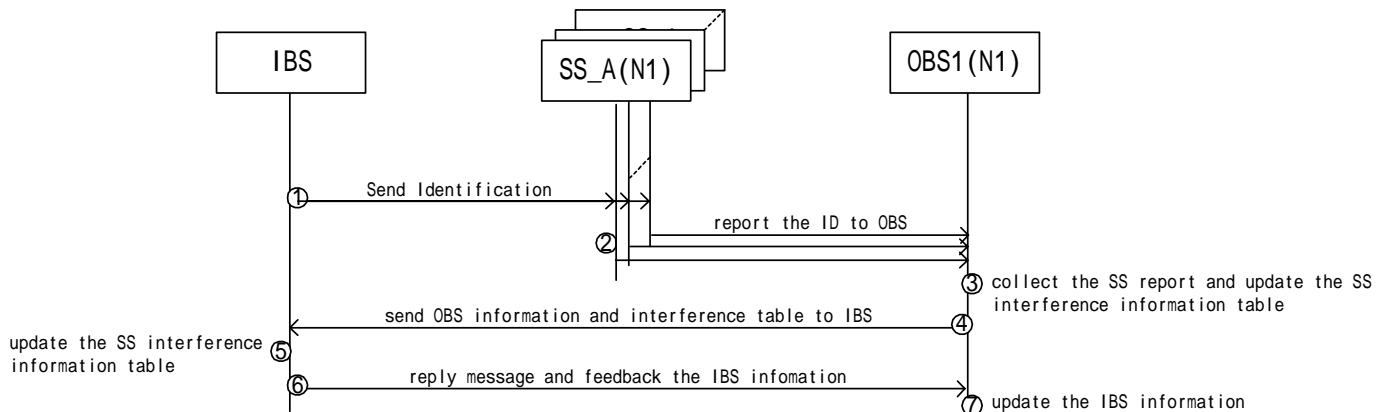
### Acronyms

- IBS - Initializing Base Station
- OBS - Operating Base Station
- IPBC - IP address Broadcast

### Reference:

- [1] *IEEE802.16-2004: IEEE standard for Local and metropolitan area networks Part16: Air Interface for Fixed Broadband Wireless Access Systems 2004-10-01*
- [2] *IEEE 802.16-05/017: working document Amendment for Improved Coexistence Mechanisms for License-Exempt Operation 2005-08-15*

### Description of concept



Please see to the chart above shown the neighbor discovery procedure:

The initializing BS (IBS) use the coexistence time slot to broadcast its IP address to the reachable SSs in the neighbor network(N1) belong to its serving BS(OBS1).

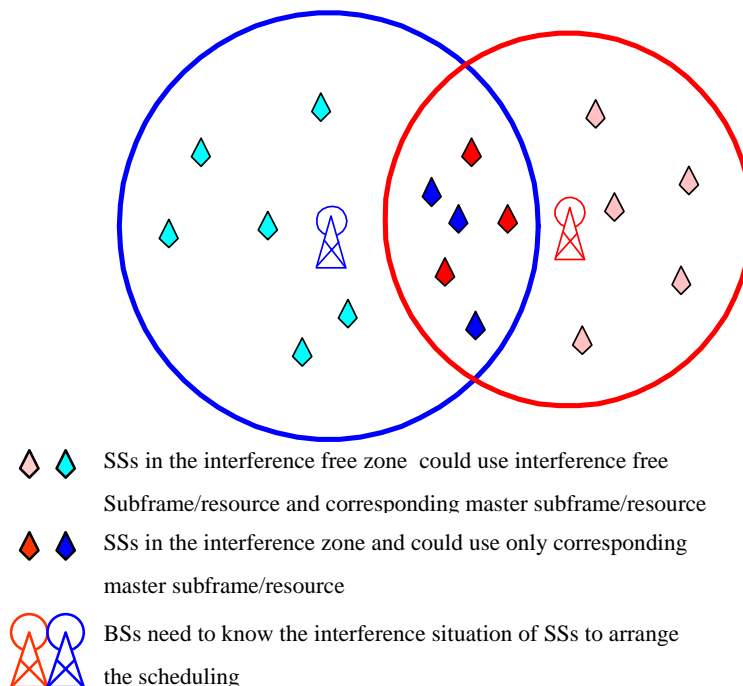
The SSs then report to their serving BS (OBS1) one by one unsolicitedly<1>, they will report the information of IBS and the interference status that they record in the process of receiving the IPBC message signal.

The OBS1 will get all the information from the related SSs and saved the useful content to their database<2>. After that, the OBS1 will contact IBS using the IP address reported by the SS and transfer the parameter of its own to IBS after the negotiation and authorization, and got the parameter and other corresponding information from the IBS too.

There are 2 points in this procedure to be concerned with in this paper:

<1> We need a message type for the SSs to carry the parameter reported to their serving BS;

<2> We need to define the content in the database for gathering the SSs interference status and sources. The interference source and status information for each SS related to the decision by the serving BS for their traffic scheduling. So the serving BS need to maintain a table inside there database and update the table in time.



### Message for SS report

We could choose existing message REP\_RSP for the interference reporting by the SSs for issue<1>, since the REP\_RSP have already defined and used as RSSI/CINR measurement reports, we could add only some features fit for the IPBC report in the neighbor discovery stage. In the existing description, we can find the characteristic of this message that already meet the requirement:

” Where regulation mandates detection of specific signals by the SS, the SS shall also send a REP-RSP in an unsolicited fashion upon detecting such signals on the channel it is operating in, if mandated by regulatory

requirements. The SS may also send a REP-RSP containing channel measurement reports, in an unsolicited fashion, or when other interference is detected above a threshold value.”

We proposed some text changing in related section to clarify this feature:

[insert the following text into the WD 2.1.3]

[change the 6.3.2.3.33 into the following text in 802.16 primary standard]

6.3.2.3.33 Channel measurement Report Request/Response (REP-REQ/RSP)

If the BS, operating in bands below 11 GHz, requires RSSI and CINR channel measurement reports, or requires neighbor detection reports, it shall send the channel measurements Report Request message. The Report Request message shall additionally be used to request the results of the measurements the BS has previously scheduled. Table 62 shows the REP-REQ message.

The channel measurement Report Response message shall be used by the SS to respond to the channel measurements listed in the received Report Requests. Where regulation mandates detection of specific signals by the SS, the SS shall also send a REP-RSP in an unsolicited fashion upon detecting such signals on the channel it is operating in, if mandated by regulatory requirements. The SS may also send a REP-RSP containing channel measurement reports, in an unsolicited fashion, or when other interference is detected above a threshold value. In cases where specific signal detection by an SS is not mandated by regulation, the SS may indicate 'Unmeasured. Channel not measured.' (see 11.12) in the REP-RSP message when responding to the REP-REQ message from the BS. Especially for coexistence network, when SS have detected the IP broadcasting message from the coexistence neighbor BS, the SS need to use REP\_RSP to report the information to its serving BS unsolicitedly. Table 63 shows the REP-RSP message.

[insert the following entry in the second table of 11.11]

<u>Neighbor Interference Report</u>	<u>1.9</u>	<u>1</u>	<u>Bit #0: 1-include IP address received in IPBC</u> <u>Bit #1: 1-include RSSI of CTS symbols(only valid when bit#0 is set to one)</u> <u>Bit #2: 1-include FSN that start to receive IPBC</u> <u>Bit #3~7: reserved, shall be set to zero</u>
-------------------------------------	------------	----------	---

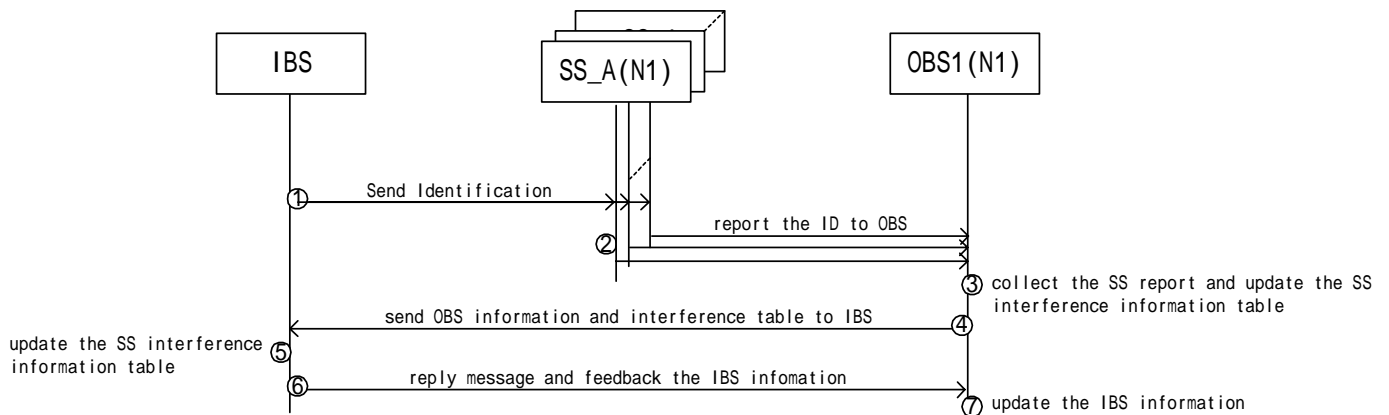
[insert the following entry in the first table of 11.12]

<u>Neighbor Report</u>	<u>7</u>	<u>variable</u>	<u>Compound</u>
------------------------	----------	-----------------	-----------------

[insert the following table into 11.12 as indicates:]

<u>Neighbor Interference Report type</u>	<u>Name</u>	<u>Type</u>	<u>Length</u>	<u>Value</u>
<u>all</u>	<u>Neighbor count</u> <u>/New NDS</u>	<u>7.1</u>	<u>1</u>	<u>Bit #0:1-New Neighbor Discovered by IPBC received</u> <u>Bit #1-7:The number of neighbor that interference to this SS</u>
<u>bit #0=1</u>	<u>Neighbor IP address</u>	<u>7.2</u>	<u>4</u>	<u>4bytes IP address of neighbor interference to this SS,</u> <u>255. 255. 255. 255 indicate the fail of CRC check.</u>
<u>bit #1=1</u>	<u>Neighbor IP address with RSSI</u>	<u>7.3</u>	<u>2</u>	<u>1byte RSSI mean (see also 8.2.2, 8.3.9, 8.4.11) for details)</u> <u>1byte standard deviation</u>
<u>Bit #2=1</u>	<u>Starting Frame Serial Number of IPBC</u>	<u>7.4</u>	<u>2</u>	<u>Bit# 0-10: FSN of IPBC starting frame</u> <u>Bit#11-15: reserved</u>

[Change the figure10 as indicated]



## Complement of the database

For the point <2>, we need to clarify some content in the BS database as inputs to support the BS to schedule the traffic of each SS. And these information needs to be updated when any BS startup in the coexistence neighborhood.

[insert the entries into the first paragraph of page 19 as indicates:]

The BS data base will include:

.....

*For every active SS: SSID and its attenuation relative to radio-signature power, in the used subframes, in the interval between two Master sub-frames.*

*For every neighbor BS: the BSID, the IP address of the neighbor and other profile information, and the SSs it interfered to, (and the SSs belong to it that interfered by the database owner BS.tbd.)*

*For every BS in the same community: the contact IP address and the interference situation between this BS and other BS, including the interference situation with the DB owner.*

*For every SS registered: the interference situation, the number of interference source, the IP address and RSSI of each source detected by the SS.*

[Change the first the section 2.1.5 as indicates:]

### 2.1.5 BS regular operation

- Schedule SS traffic

*The traffic of each served SS should be schedule into corresponding sub-frame/resource based on the SSs' interference situation. Traffic of SSs in the interference free zone could be scheduled into any available sub-frame/resource of the serving BS, and traffic of SSs in the interference zone should take only corresponding master subframe/resource of the serving BS.*

- Set Tx power levels, such to use minimum power levels for both BS and SSs;

- Maintain its own database when other BSs join the network.

The BS needs to keep updating the information of all the BS in the community including the neighbor BS, and the information of the served SSs in the own network. The information includes the profile and the interference situation of the stations. The interference situation information includes the interference status, the interference source and corresponding RSSI, the interference victims founded. Etc.

[change the section 2.1.8.3 as indicates: ]

### 2.1.8.3 Interference to SS

Report to BS about experienced interference

List of frame\_number, sub-frame, offset, IP address of source BS (if detected)

BS start process for interference reduction with feedback from the SS.

[change the first line 3-14 in page 25 as indicates: ]

**The first phase of the Community Entry is to judge the validity of country/region data base. If the country/region database is valid, process uses the country/region (FCC) data base::**

- Read the Regional/country (FCC) data base;
- Identify which Base Stations might create interference, based on the location information;
- Learn the IP identifier for those Base Stations;

#### Otherwise:

- New BS uses the interference free slot to broadcast the contact request
- The SS in the common coverage will forward the information to its operating base station using REP\_RSP message.
- The operating neighbor BS update its database and send feedback information using IP network
- learn the IP identifier By the message from neighbor BS via IP network

**To support the functionality, the content of database needs to be refined and standardized.**

[Tables proposed to be inserted in the working document as indicated:]

<u>Syntax</u>	<u>Size</u>	<u>Notes</u>
<u>This BS information table()</u>		
<u>BSID</u>	<u>48bits</u>	
<u>Operator ID</u>	<u>?bits</u>	
<u>IP address</u>	<u>32bits</u>	<u>IPv4 address</u>
<u>Master resource ID</u>	<u>8bits</u>	<u>Sub-frame number</u>
<u>Negotiation status</u>	<u>8bits</u>	<u>Bit0: get communication in the IP network</u> <u>Bit1: be registered in</u> <u>Bit2: registered to</u>

		<i>Bit3: done for resource sharing(if neighboring) Bit4-7: tbc.</i>
<u>CTS parameter()</u> {		<u>Regulated by region/country</u>
<u>Tcts_start</u>	<u>16bits</u>	<u>In microseconds</u>
<u>Tcts_duration</u>	<u>8bits</u>	<u>In microseconds</u>
<u>Period of frames</u>	<u>8bits</u>	<u>frames</u>
<u>Starting frames offset</u>	<u>16bits</u>	<u>frame serial number of the first frame that CTS presented</u>
<u>Length of Symbols</u>	<u>8bits</u>	<u>In microseconds, need to be 1/n of Tcts_duration</u>
<u>}</u>		
<u>Neighboring</u>	<u>1bit</u>	<u>Neighbor with this BS?</u> <u>1=yes</u> <u>0=no</u>
<u>If (Neighbor){</u>		
<u>Number of victim SSs</u>	<u>16bits</u>	<u>The number of victim SSs of this neighbor, in this network</u>
<u>for (I = 1; I &lt;= n; i++) {</u>		
<u>SSID</u>	<u>48bits</u>	
<u>RSSI</u>	<u>16bits</u>	<u>1byte RSSI mean (see also 8.2.2, 8.3.9, 8.4.11) for details</u> <u>1byte standard deviation</u>
<u>(tbc.)</u>	<u>(tbc.)</u>	<u>(tbc.)</u>
<u>}</u>		
<u>}</u>		
<u>Profile()</u> {		
<u>Band</u>		
<u>PHY mode()</u> {		
<u>Modulation</u>		
<u>(Tbc.)</u>		
<u>}</u>		
<u>Maximum power</u>	<u>8 bits</u>	<u>dbm</u>
<u>Number of registered SS</u>	<u>12bits</u>	
<u>for (I = 1; I &lt;= n; i++) {</u>		
<u>SSID</u>	<u>48bits</u>	
<u>(tbc.)</u>	<u>(tbc.)</u>	<u>(tbc.)</u>
<u>}</u>		
<u>(tbc.)</u>	<u>(tbc.)</u>	<u>(tbc.)</u>
<u>}</u>		
<u>}</u>		

<u>Syntax</u>	<u>Size</u>	<u>Notes</u>
<u>BS information table()</u> {		
<u>Index</u>	<u>16bits</u>	
<u>BSID</u>	<u>48bits</u>	
<u>Operator ID</u>	<u>?bits</u>	
<u>IP address</u>	<u>32bits</u>	<u>IPv4 address</u>
<u>Sector ID</u>	<u>8bits</u>	
<u>Master resource ID</u>	<u>8bits</u>	<u>Sub-frame number</u>
<u>Negotiation status</u>	<u>8bits</u>	<u>Bit0: get communication in the IP network</u>

		<i>Bit1: be registered in</i> <i>Bit2: registered to</i> <i>Bit3: done for resource sharing(if neighboring)</i> <i>Bit4-7: tbc.</i>
<i>Neighboring</i>	<i>1bit</i>	<i>Neighbor with this BS?</i> <i>1=yes</i> <i>0=no</i>
<i>If (Neighbor){</i>		
<i>  Number of victim SSs</i>	<i>16bits</i>	<i>The number of victim SSs of this neighbor, in this network</i>
<i>  for (i = 1; i &lt;= n; i++) {</i>		
<i>    SSID</i>	<i>48bits</i>	
<i>    RSSI</i>	<i>16bits</i>	<i>1byte RSSI mean (see also 8.2.2, 8.3.9, 8.4.11) for details)</i> <i>1byte standard deviation</i>
<i>  }</i>		
<i>(Tbc.)</i>	<i>(Tbc.)</i>	<i>(Tbc.)</i>
<i>}</i>		
<i>Number of Neighbors</i>	<i>8bits</i>	<i>The number of neighbors of this BS</i>
<i>for (i= 1; i &lt;= m; i++) {</i>		
<i>  BSID</i>	<i>48bits</i>	
<i>  (Tbc.)</i>	<i>(Tbc.)</i>	<i>(Tbc.)</i>
<i>}</i>		
<i>Profile(){</i>		
<i>  Band</i>		
<i>  PHY mode(){</i>		
<i>    Modulation</i>		
<i>    (Tbc.)</i>		
<i>  }</i>		
<i>  Maximum power</i>	<i>8 bits</i>	<i>dbm</i>
<i>  Number of registered SS</i>	<i>12bits</i>	
<i>  (tbc.)</i>	<i>(tbc.)</i>	<i>(tbc.)</i>
<i>}</i>		
<i>(tbc.)</i>	<i>(tbc.)</i>	<i>(tbc.)</i>
<i>}</i>		

<b><u>Syntax</u></b>	<b><u>Size</u></b>	<b><u>Notes</u></b>
<i>SS information table(){</i>		
<i>  Index</i>	<i>16bits</i>	
<i>  SSID</i>	<i>48bits</i>	
<i>  Interference status</i>	<i>1bit</i>	<i>Interfered by neighbor?</i> <i>1=yes</i> <i>0=no</i>
<i>  If (Interfered){</i>		
<i>    Number of source BSs</i>	<i>8bits</i>	<i>The number of interference source of neighbor</i>
<i>    for (I = 1; I &lt;= n; i++) {</i>		
<i>      BSID</i>	<i>48bits</i>	



<u>IBS IPBC detected</u>	<u>1bits</u>	<u>1=yes 0=no</u>
<u>If (IBS IPBC detected){</u>		
<u>IP address</u>	<u>32bits</u>	<u>If the IBS IPBC message detected, the IP address report by the SS will add here, and updating the bit above</u>
<u>Sector ID</u>	<u>?bits</u>	<u>Reported by SS</u>
<u>FSN</u>	<u>16bits</u>	<u>Reported by SS</u>
<u>(tbc.)</u>	<u>(tbc.)</u>	<u>(tbc.)</u>
<u>}</u>		
<u>RSSI</u>	<u>16bits</u>	<u>1byte RSSI mean (see also 8.2.2, 8.3.9, 8.4.11) for details)</u> <u>1byte standard deviation</u>
<u>(tbc.)</u>	<u>(tbc.)</u>	<u>(tbc.)</u>
<u>}</u>		
<u>(tbc.)</u>	<u>(tbc.)</u>	<u>(tbc.)</u>
<u>}</u>		
<u>(tbc.)</u>	<u>(tbc.)</u>	<u>(tbc.)</u>
<u>}</u>		