

Project	IEEE 802.16 Broadband Wireless Access Working Group < http://ieee802.org/16 >	
Title	Flow charts merging for the BS initialization procedure	
Date Submitted	2006-09-17	
Source(s)	Wu Xuyong, Huawei Huawei Industrial Base, Bantian, Longgang, Shenzhen 518129 P.R.C	Voice: +86-755-28972327 Fax: wuxuyong@huawei.com
Re:	80216h-06_021: Third Working Group Review: P802.16h Working Document (2006-08-10)	
Abstract	To merge 2 flow chart figure h8/h9 according to the 44 th meeting.	
Purpose	To consolidate the working document.	
Notice	This document has been prepared to assist IEEE 802.16. It is offered as a basis for discussion and is not binding on the contributing individual(s) or organization(s). The material in this document is subject to change in form and content after further study. The contributor(s) reserve(s) the right to add, amend or withdraw material contained herein.	
Release	The contributor grants a free, irrevocable license to the IEEE to incorporate material contained in this contribution, and any modifications thereof, in the creation of an IEEE Standards publication; to copyright in the IEEE's name any IEEE Standards publication even though it may include portions of this contribution; and at the IEEE's sole discretion to permit others to reproduce in whole or in part the resulting IEEE Standards publication. The contributor also acknowledges and accepts that this contribution may be made public by IEEE 802.16.	
Patent Policy and Procedures	The contributor is familiar with the IEEE 802.16 Patent Policy and Procedures < http://ieee802.org/16/ipr/patents/policy.html >, including the statement "IEEE standards may include the known use of patent(s), including patent applications, provided the IEEE receives assurance from the patent holder or applicant with respect to patents essential for compliance with both mandatory and optional portions of the standard." Early disclosure to the Working Group of patent information that might be relevant to the standard is essential to reduce the possibility for delays in the development process and increase the likelihood that the draft publication will be approved for publication. Please notify the Chair < mailto:chair@wirelessman.org > as early as possible, in written or electronic form, if patented technology (or technology under patent application) might be incorporated into a draft standard being developed within the IEEE 802.16 Working Group. The Chair will disclose this notification via the IEEE 802.16 web site < http://ieee802.org/16/ipr/patents/notices >.	

Flow chart merging for the BS initialization procedure

Huawei Technologies Co., Ltd.

Overview

There are 2 flow charts inside 802.16h-06_015r1 working document illustrating the BS initializing procedure. They are somehow or other overlapping and redundant with each other.

This contribution is to merge these two figure into one and trying to keep all useful illustration inside, according to the action item as LE TG resolution in meeting 44th.

Reference:

- [1] *IEEE 802.16h-06/019: 802.16h License-Exempt Task Group Meeting Minutes (2006-08-08)*
- [2] *IEEE 802.16h-06/015r1: Working Document for P802.16h (2006-08-01)*
- [3] *IEEE 802.16h-06/021: Third Working Group Review: P802.16h Working Document (2006-08-10)*

Original Figures:

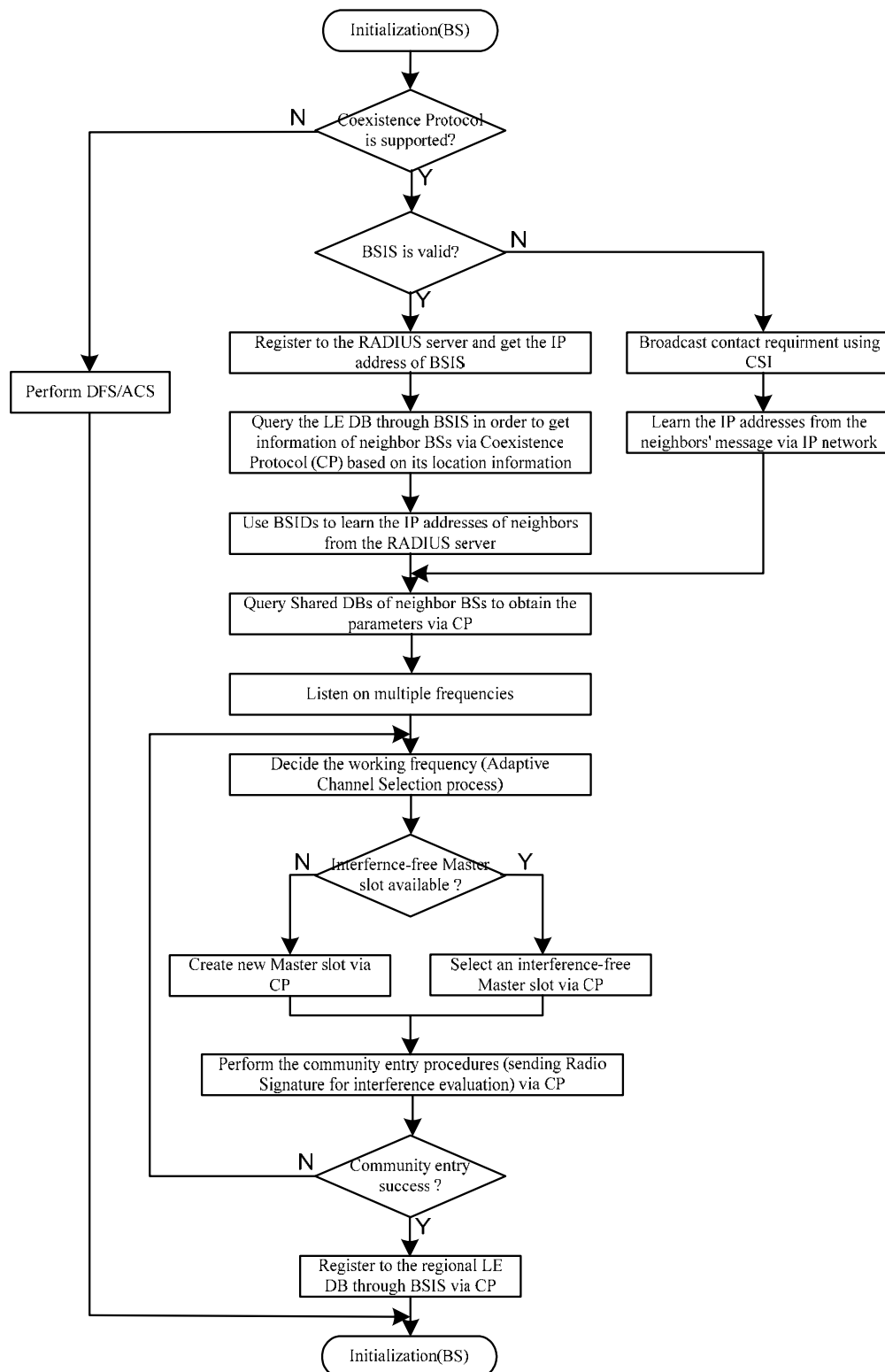


Figure h8 – Initialization procedures — BS

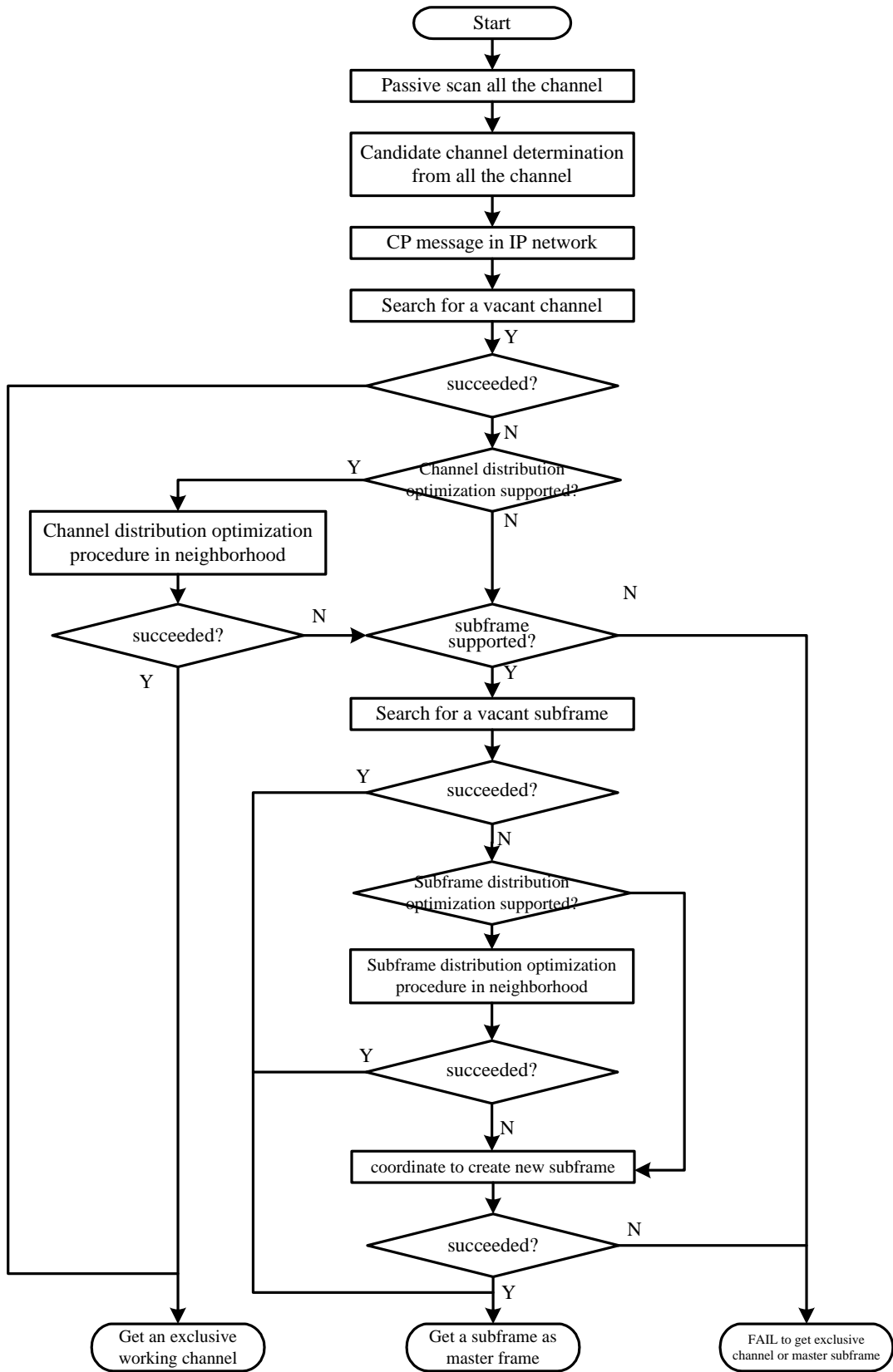


Figure h9 – Initialization procedures - BS radio resource allocation

Proposal:

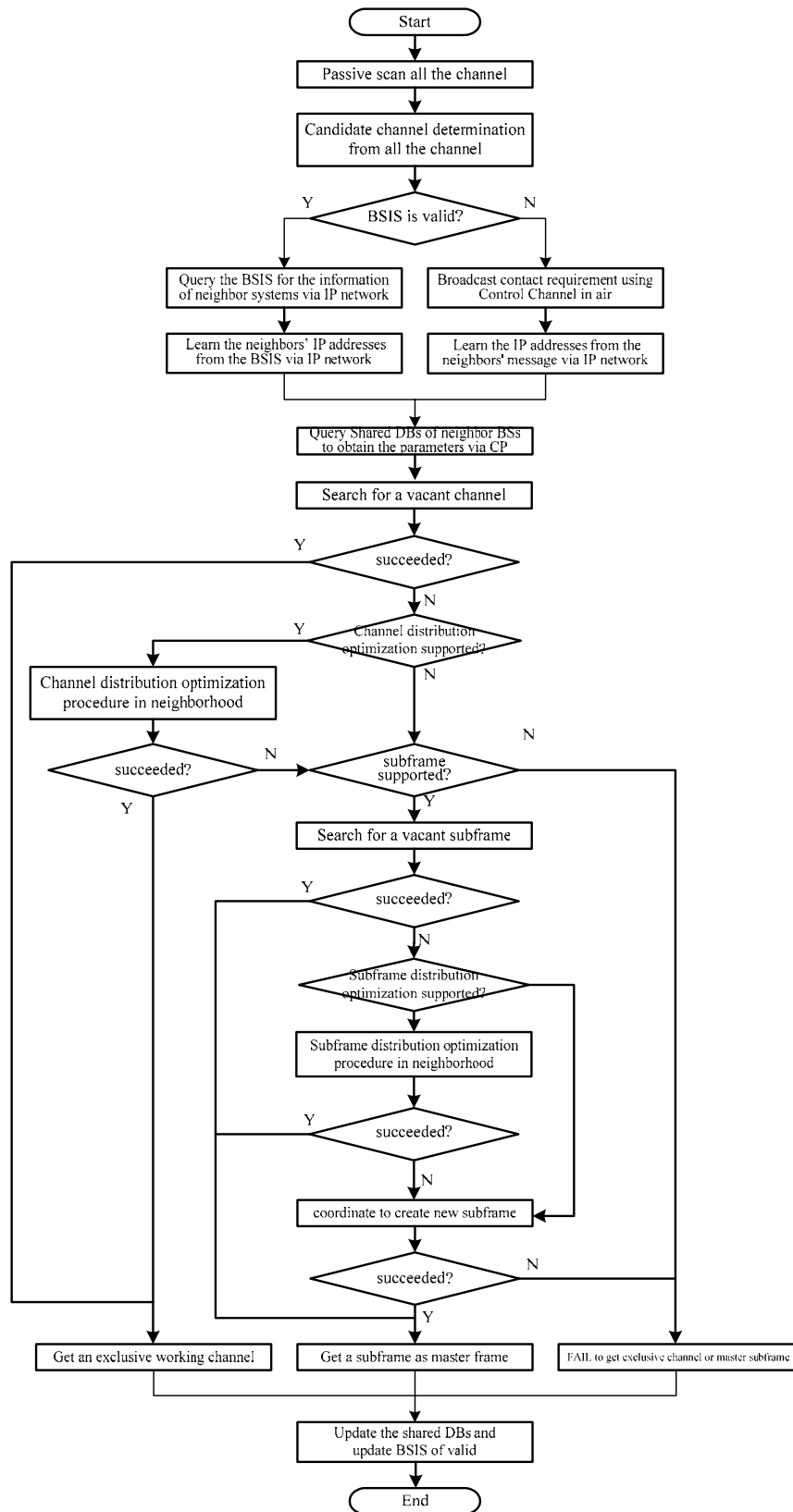


Figure h8 — Initialization procedures — BS