

Project	IEEE 802.16 Broadband Wireless Access Working Group < http://ieee802.org/16 >	
Title	Update of network entry figures	
Date Submitted	2005-07-06	
Source(s)	Giulio Cavalli Siemens	Voice: +39 0224376380 Fax: +39 0224376726 Giulio.cavalli@siemens.com
Re:	Corrigendum Sponsor Ballot	
Abstract	Editorial modifications to network entry figures to reflect security support	
Purpose	To incorporate the text changes proposed in this contribution into the P802.16_Cor1/D3 draft	
Notice	This document has been prepared to assist IEEE 802.16. It is offered as a basis for discussion and is not binding on the contributing individual(s) or organization(s). The material in this document is subject to change in form and content after further study. The contributor(s) reserve(s) the right to add, amend or withdraw material contained herein.	
Release	The contributor grants a free, irrevocable license to the IEEE to incorporate material contained in this contribution, and any modifications thereof, in the creation of an IEEE Standards publication; to copyright in the IEEE's name any IEEE Standards publication even though it may include portions of this contribution; and at the IEEE's sole discretion to permit others to reproduce in whole or in part the resulting IEEE Standards publication. The contributor also acknowledges and accepts that this contribution may be made public by IEEE 802.16.	
Patent Policy and Procedures	<p>The contributor is familiar with the IEEE 802.16 Patent Policy and Procedures <http://ieee802.org/16/ipr/patents/policy.html>, including the statement "IEEE standards may include the known use of patent(s), including patent applications, provided the IEEE receives assurance from the patent holder or applicant with respect to patents essential for compliance with both mandatory and optional portions of the standard." Early disclosure to the Working Group of patent information that might be relevant to the standard is essential to reduce the possibility for delays in the development process and increase the likelihood that the draft publication will be approved for publication. Please notify the Chair <mailto:chair@wirelessman.org> as early as possible, in written or electronic form, if patented technology (or technology under patent application) might be incorporated into a draft standard being developed within the IEEE 802.16 Working Group. The Chair will disclose this notification via the IEEE 802.16 web site <http://ieee802.org/16/ipr/patents/notices>.</p>	

Update of network entry figures

Giulio Cavalli

Introduction

In order to make the document consistent, the figure 66 and figure 70 shall be updated according to changes in paragraph 6.3.9.8 where it is stated that "If PKM is enabled the BS and SS shall perform authorization and key exchange". Authorization policy can be supported or not supported by the SS and the network entry procedure should reflect this option.

Text changes

[paragraph 6.3.9.7, replace Figure 66 with the following figure]

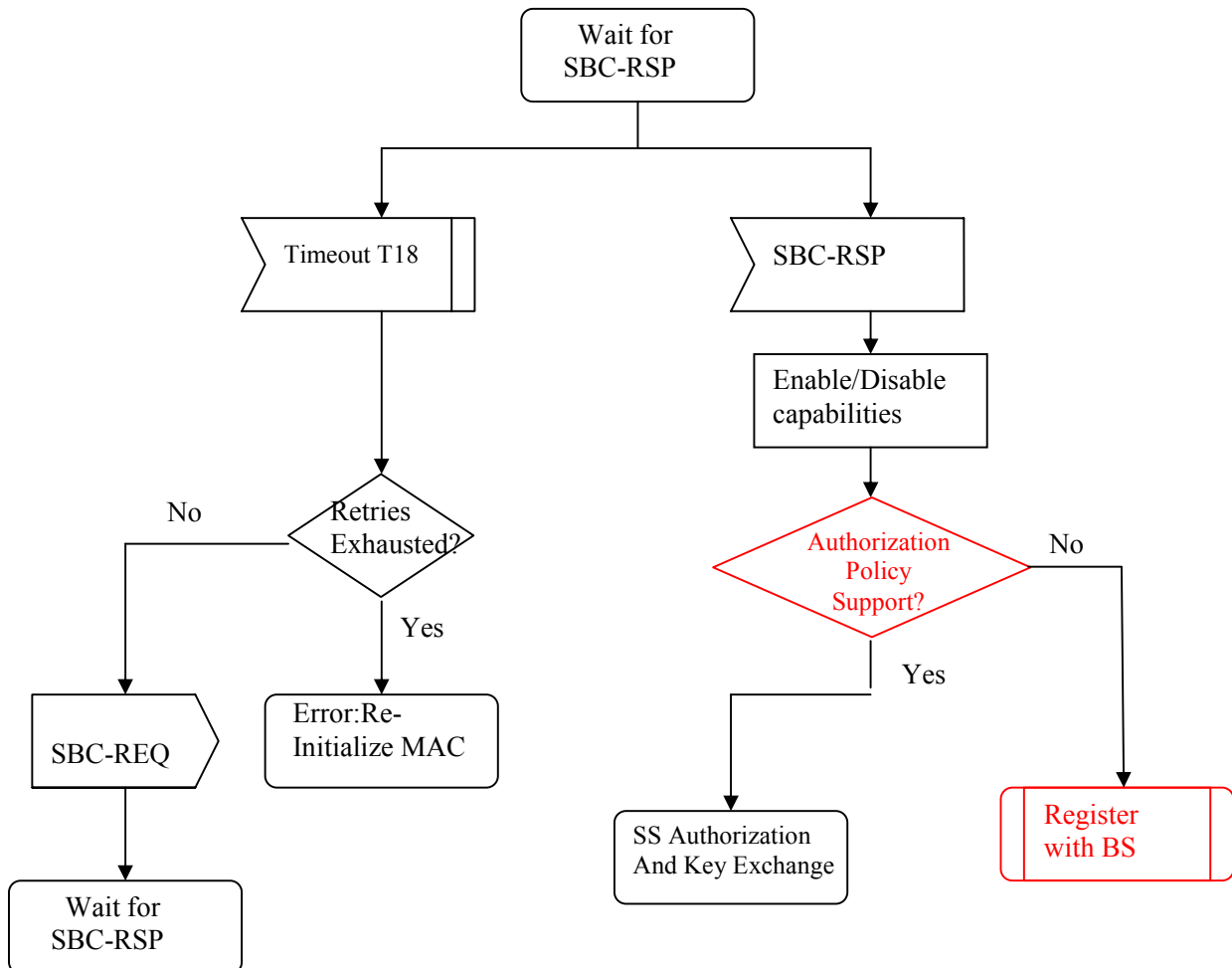


Figure 66 – Wait for SBC-RSP- SS

[paragraph 6.3.9.9, page 48, line 40, add the following]:

6.3.9.9 Registration

Replace Figure 70 with following figure

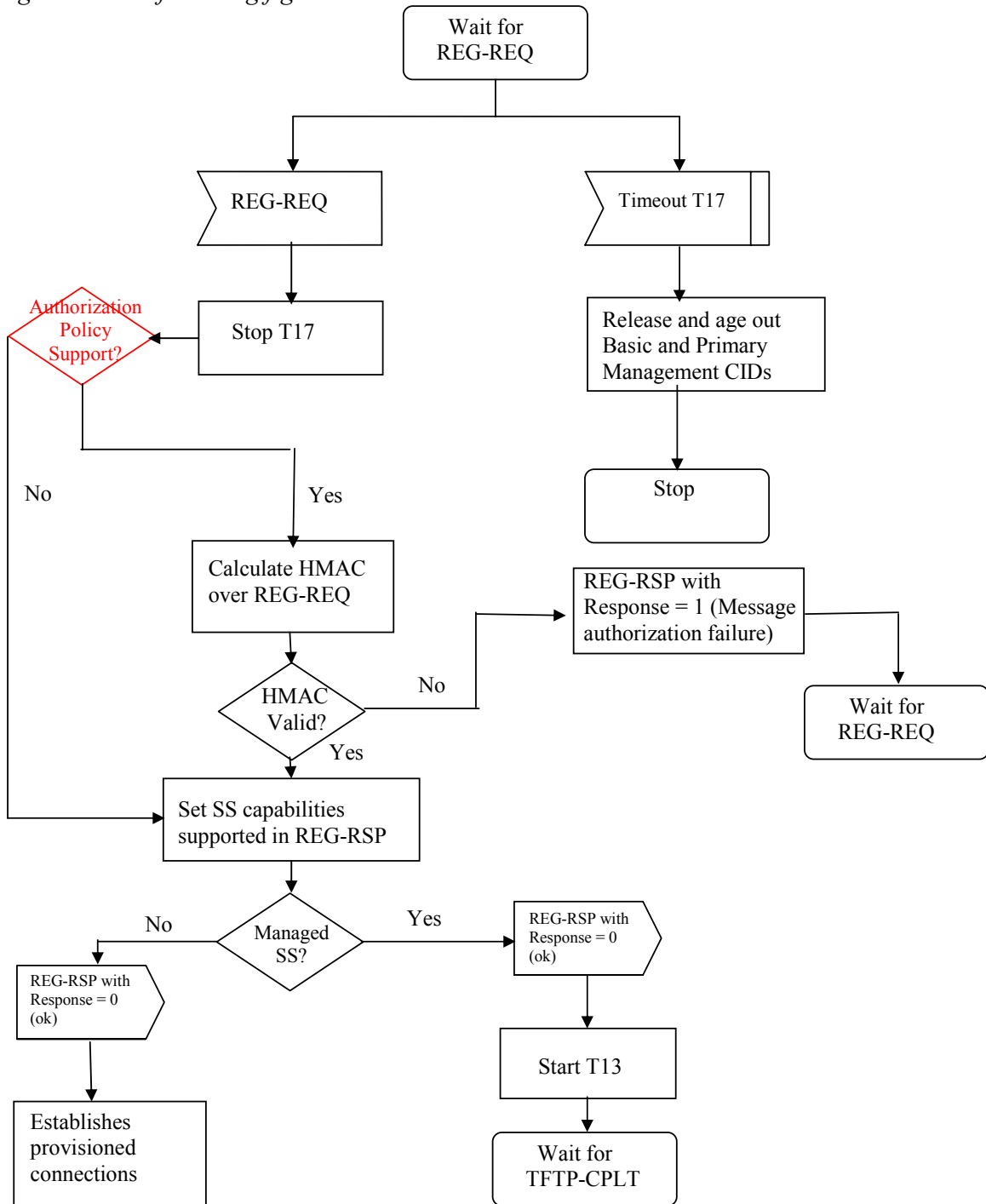


Figure 70 – Registration- BS