

Project	IEEE 802.16 Broadband Wireless Access Working Group < http://ieee802.org/16 >	
Title	Changes on Sleep mode SDL Diagram	
Date Submitted	[2003-11-06]	
Source(s)	Changhoi Koo Hyunjeong Kang Jungje Son Samsung Elec. 416, Maetan-3dong, Youngtong-gu Suwon-si, Gyeonggi-do Korea	Voice: +82-31-279-5091 Fax: +82-31-279-5130 chkoo@samsung.com hyunjeong.kang@samsung.com jungje.son@samsung.com
Re:	This contribution is for commentary #68 and #70 as a reference	
Abstract	This contribution supports the commentary and proposes some changes in Sleep mode SDL diagram.	
Purpose	Propose changes in Sleep mode SDL diagram for the IEEE802.16e Handoff Ad hoc group	
Notice	This document has been prepared to assist IEEE 802.16. It is offered as a basis for discussion and is not binding on the contributing individual(s) or organization(s). The material in this document is subject to change in form and content after further study. The contributor(s) reserve(s) the right to add, amend or withdraw material contained herein.	
Release	The contributor grants a free, irrevocable license to the IEEE to incorporate material contained in this contribution, and any modifications thereof, in the creation of an IEEE Standards publication; to copyright in the IEEE's name any IEEE Standards publication even though it may include portions of this contribution; and at the IEEE's sole discretion to permit others to reproduce in whole or in part the resulting IEEE Standards publication. The contributor also acknowledges and accepts that this contribution may be made public by IEEE 802.16.	
Patent Policy and Procedures	The contributor is familiar with the IEEE 802.16 Patent Policy and Procedures < http://ieee802.org/16/ipr/patents/policy.html >, including the statement "IEEE standards may include the known use of patent(s), including patent applications, provided the IEEE receives assurance from the patent holder or applicant with respect to patents essential for compliance with both mandatory and optional portions of the standard." Early disclosure to the Working Group of patent information that might be relevant to the standard is essential to reduce the possibility for delays in the development process and increase the likelihood that the draft publication will be approved for publication. Please notify the Chair < mailto:chair@wirelessman.org > as early as possible, in written or electronic form, if patented technology (or technology under patent application) might be incorporated into a draft standard being developed within the IEEE 802.16 Working Group. The Chair will disclose this notification via the IEEE 802.16 web site < http://ieee802.org/16/ipr/patents/notices >.	

Changes on Sleep mode SDL Diagram

Changhoi Koo, Hyunjeong Kang and Jungje Son

Samsung Electronics

Problem Statements

For making consistency with the contexts in IEEE 802.16e-03/07r4 and providing reference to the commentary #68 and #70, we propose some changes on SDL diagram of MSS listening interval operation.

Proposed Changes to Figure 106d

- *Delete 'Send Fill'*
 - ◆ *There is no any mentioning in IEEE 802.16e-03/07r4 about sending Fill bytes when MSS is polled but has no data to send.*
- *Insert the process for 'checking the frame number of PHY Synchronization Field to verify the synchronization with the BS'*
 - ◆ *To make the MSS operation, during listening interval, firm and consistent with contents in 6.4.16.3(P.35, 3~7)*
- *Change 'DL Data for SS?' to 'Positive Indication for MSS?'*
 - ◆ *To make consistency with MOB_TRF_IND message and contents through IEEE 802.16e-03/07r4*
- *Insert the process for 'checking whether MSS doesn't receive any MOB_TRF_IND message during listening interval'*
 - ◆ *To reflect commentary #70 for considering an abnormal case that MSS didn't receive any MOB_TRF_IND message during listening interval*

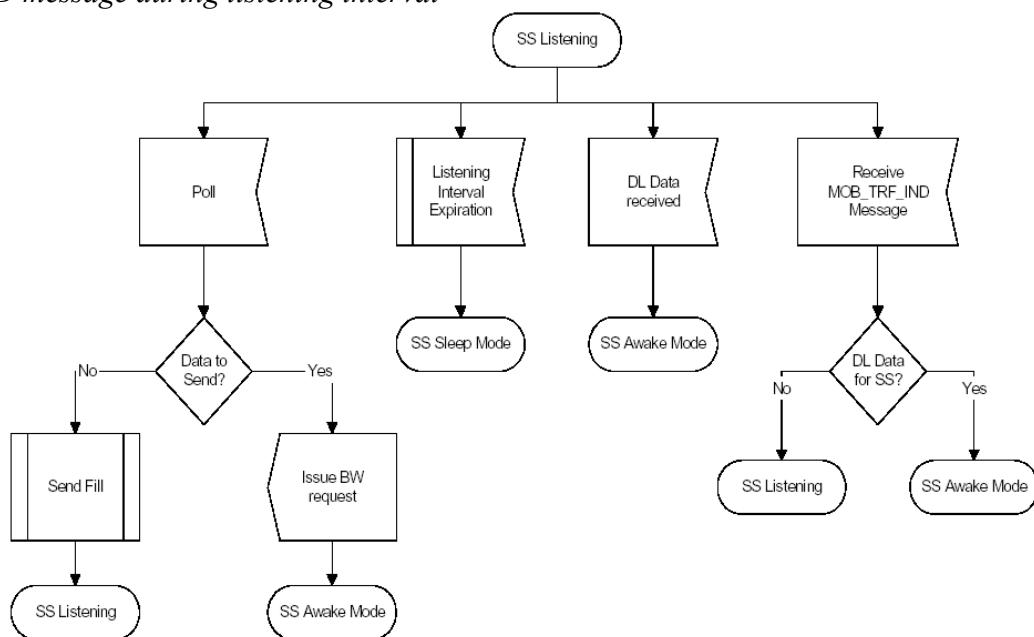


Figure 106d—SS Listening SDL Diagram
 Figure 106d—SS Listening SDL Diagram

Proposed Remedy (text change)

6.4.16 Sleep-mode for mobility-supporting SS

6.4.16.1 Introduction

[Replace Figure 106d with the following:]

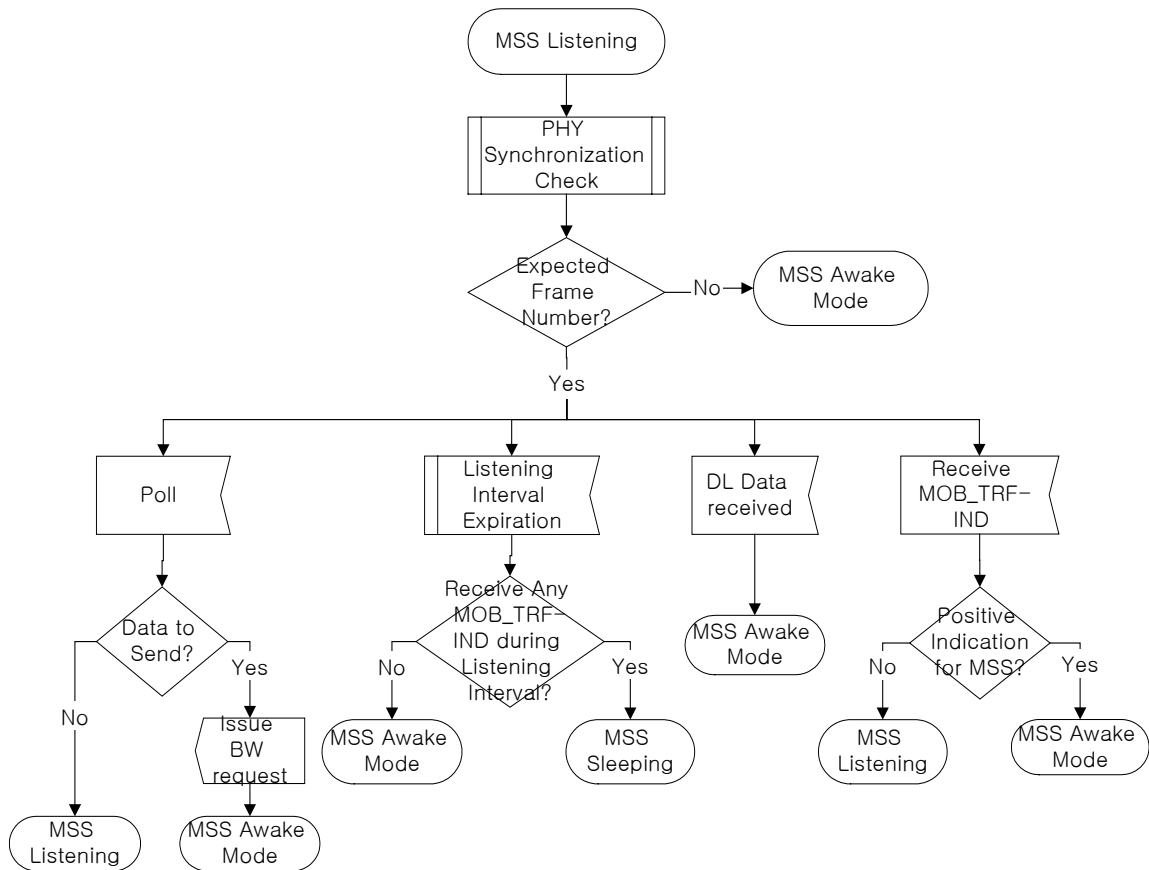


Figure 106d – MSS Listening SDL Diagram