

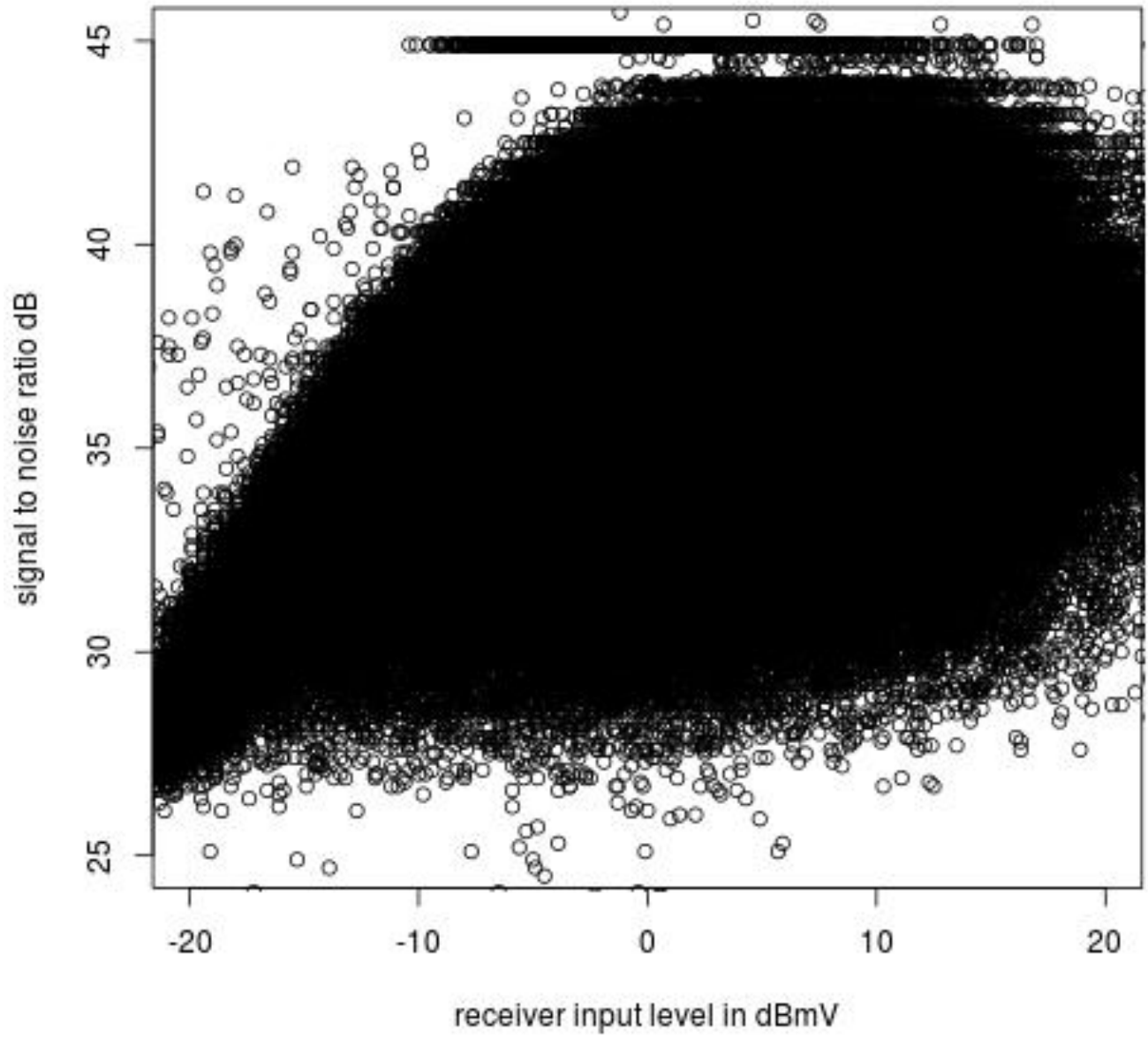
# MTA data by node

Dave Urban

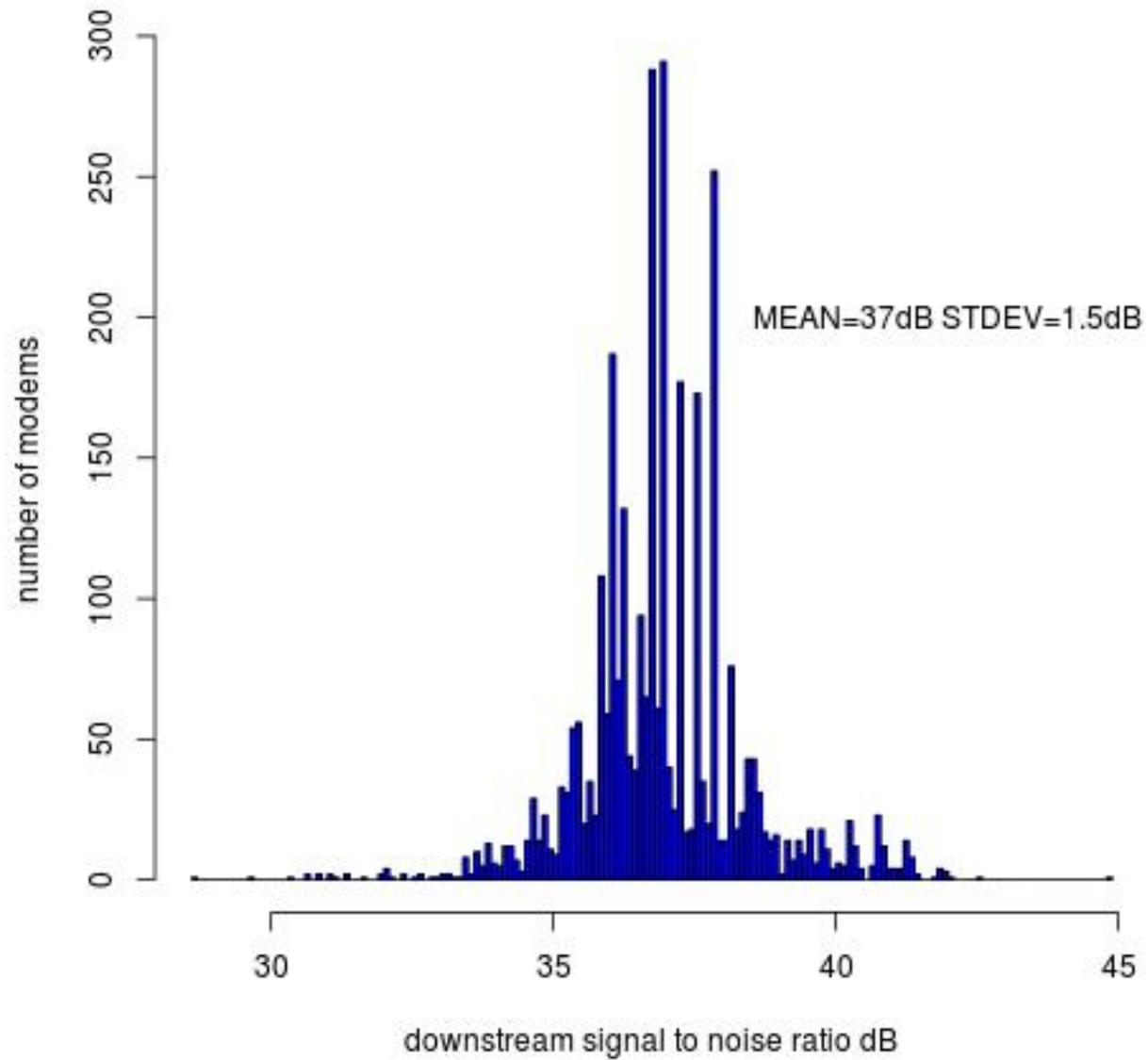
Comcast

(Other)	:6469201	(Other)	:6416168
DS_SNR	DS_RX_POWER	FEC_CORRECTED	FEC_UNCORRECTABLE
Min. :-9024.5	Min. :-1125.000	Min. :0.000e+00	Min. :0.000e+00
1st Qu.: 36.1	1st Qu.: -2.600	1st Qu.:6.000e+02	1st Qu.:6.000e+01
Median : 36.9	Median : 1.200	Median :8.302e+03	Median :5.112e+03
Mean : 36.9	Mean : 1.064	Mean :1.023e+07	Mean :1.729e+06
3rd Qu.: 37.9	3rd Qu.: 4.900	3rd Qu.:1.007e+05	3rd Qu.:5.140e+04
Max. : 89.5	Max. : 240.000	Max. :4.295e+09	Max. :4.294e+09
NA's :24966	NA's :24964	NA's :24968	NA's :24968
US_TX_POWER	US_INTERFACE_ID		
Min. :0.00	Min. : 3961		
1st Qu.:42.00	1st Qu.: 197177		
Median :45.30	Median : 328249		
Mean :45.02	Mean : 409784		
3rd Qu.:48.80	3rd Qu.: 459353		
Max. :61.20	Max. :231538844		
NA's :24964	NA's :11324		

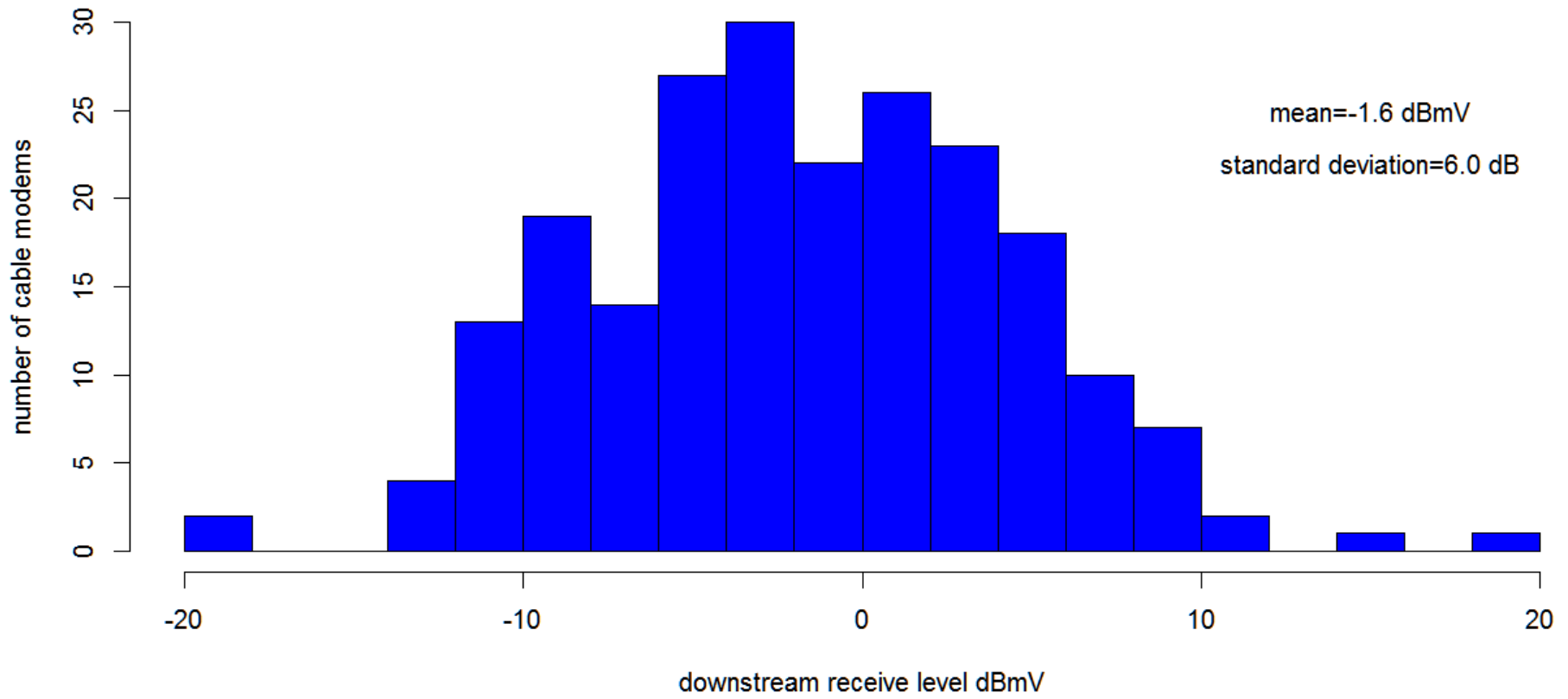
SNR vs RX for 6 million modems



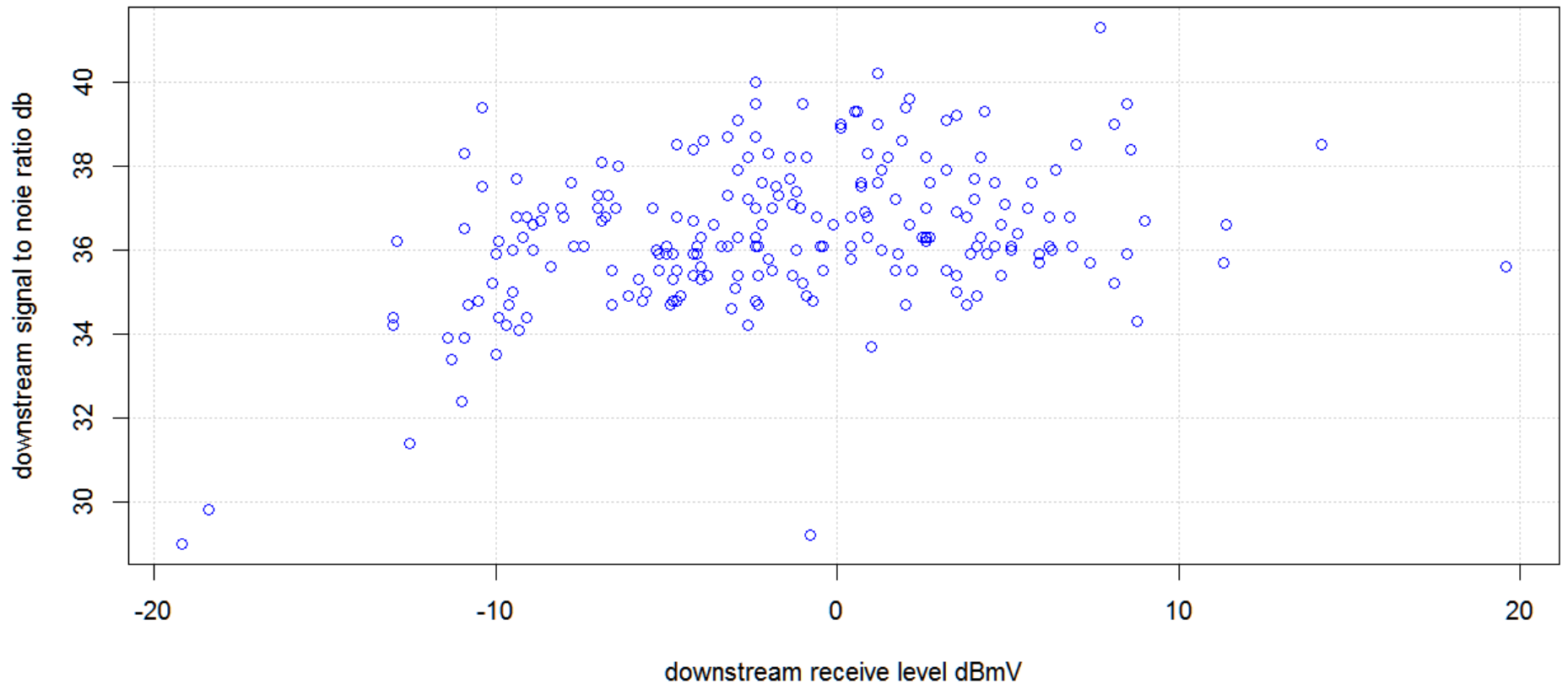
### Shady Grove CMTS SNR Distribution



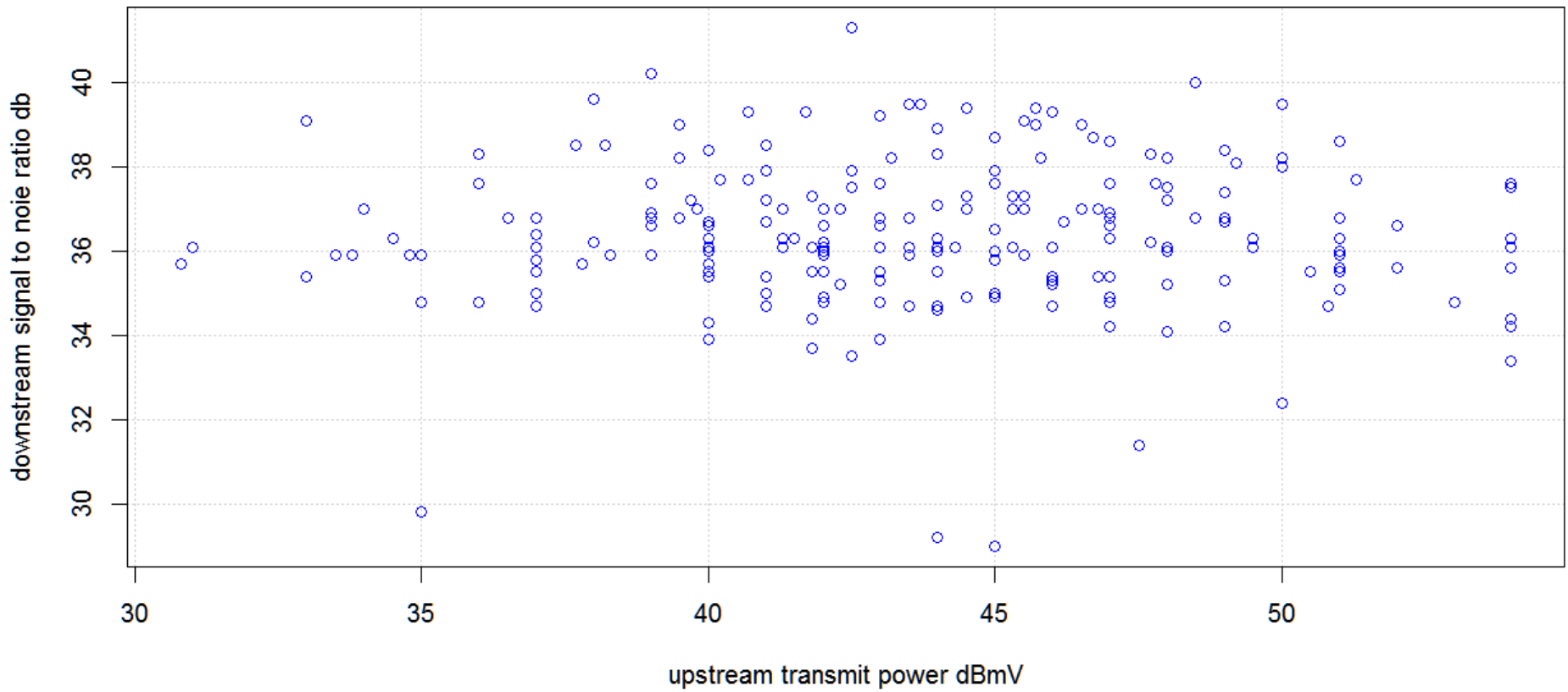
### Example Node 2 with 219 Cable Modems



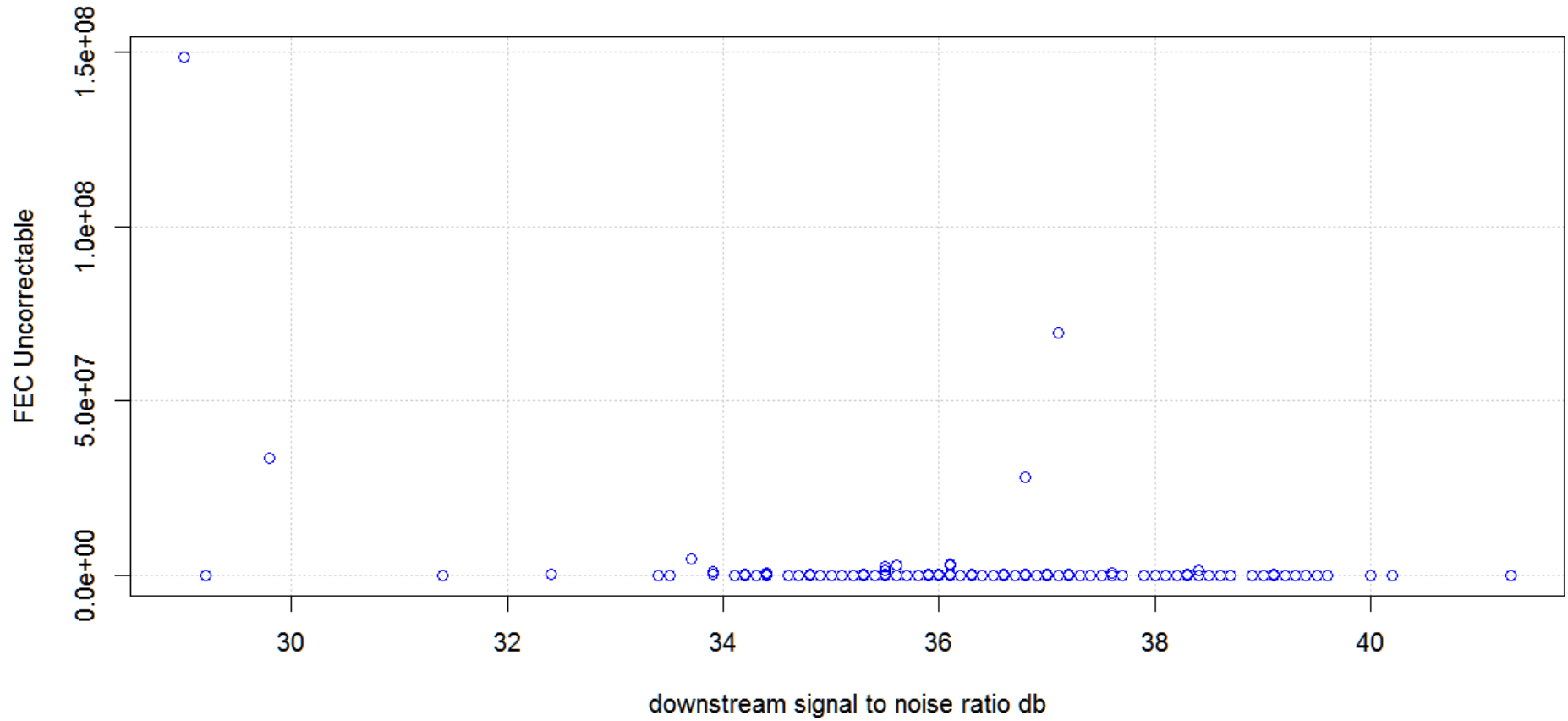
**Example Node 2 Data for 219 MTAs**



**Example Node 2 Data for 219 MTAs**

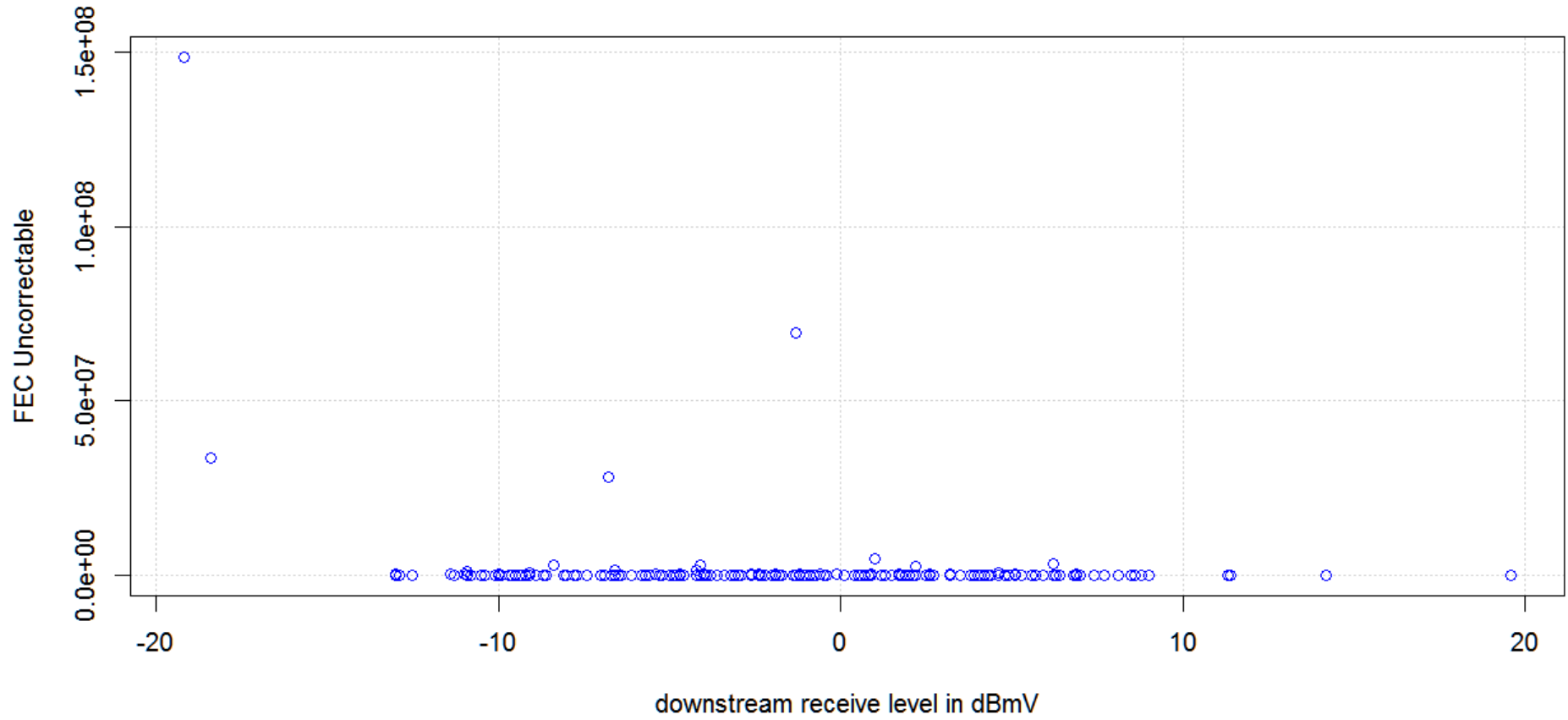


Example Node 2 Data for 219 MTAs

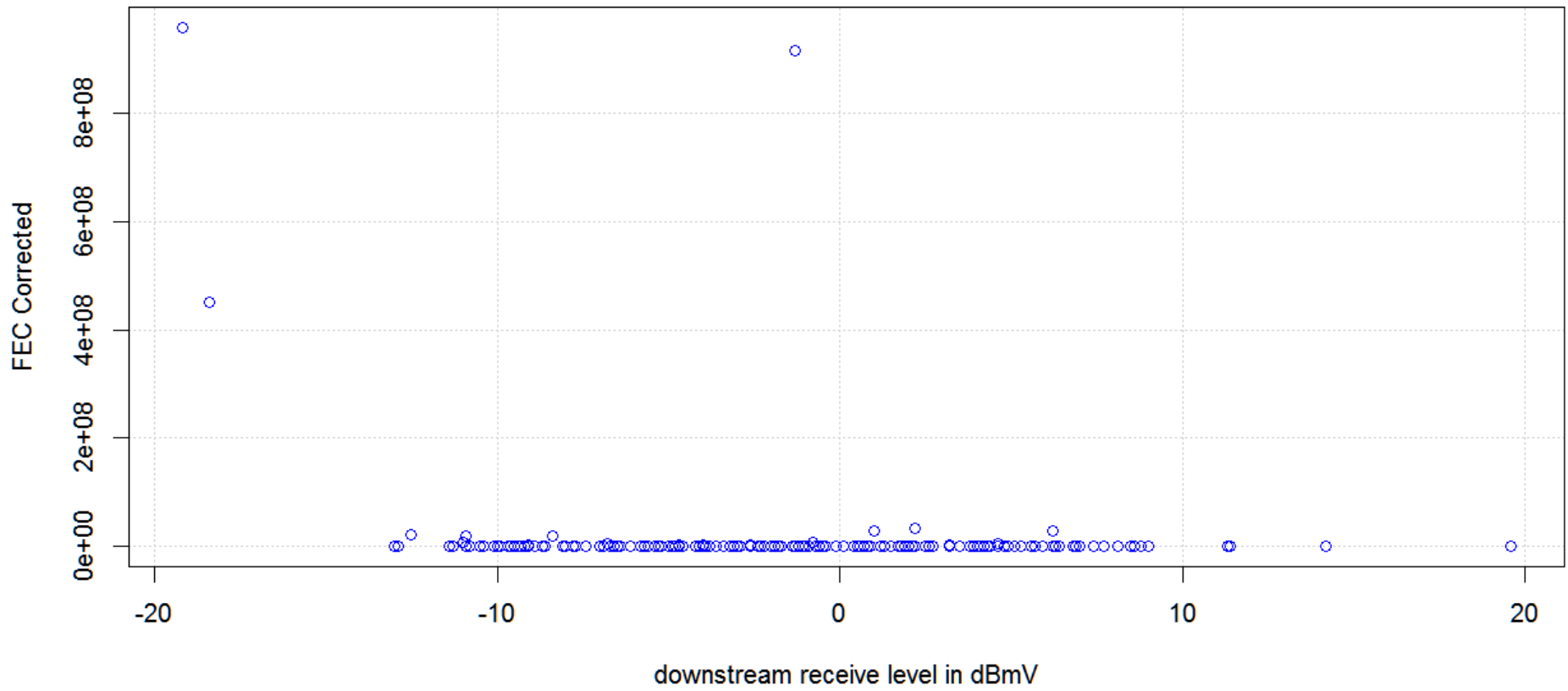




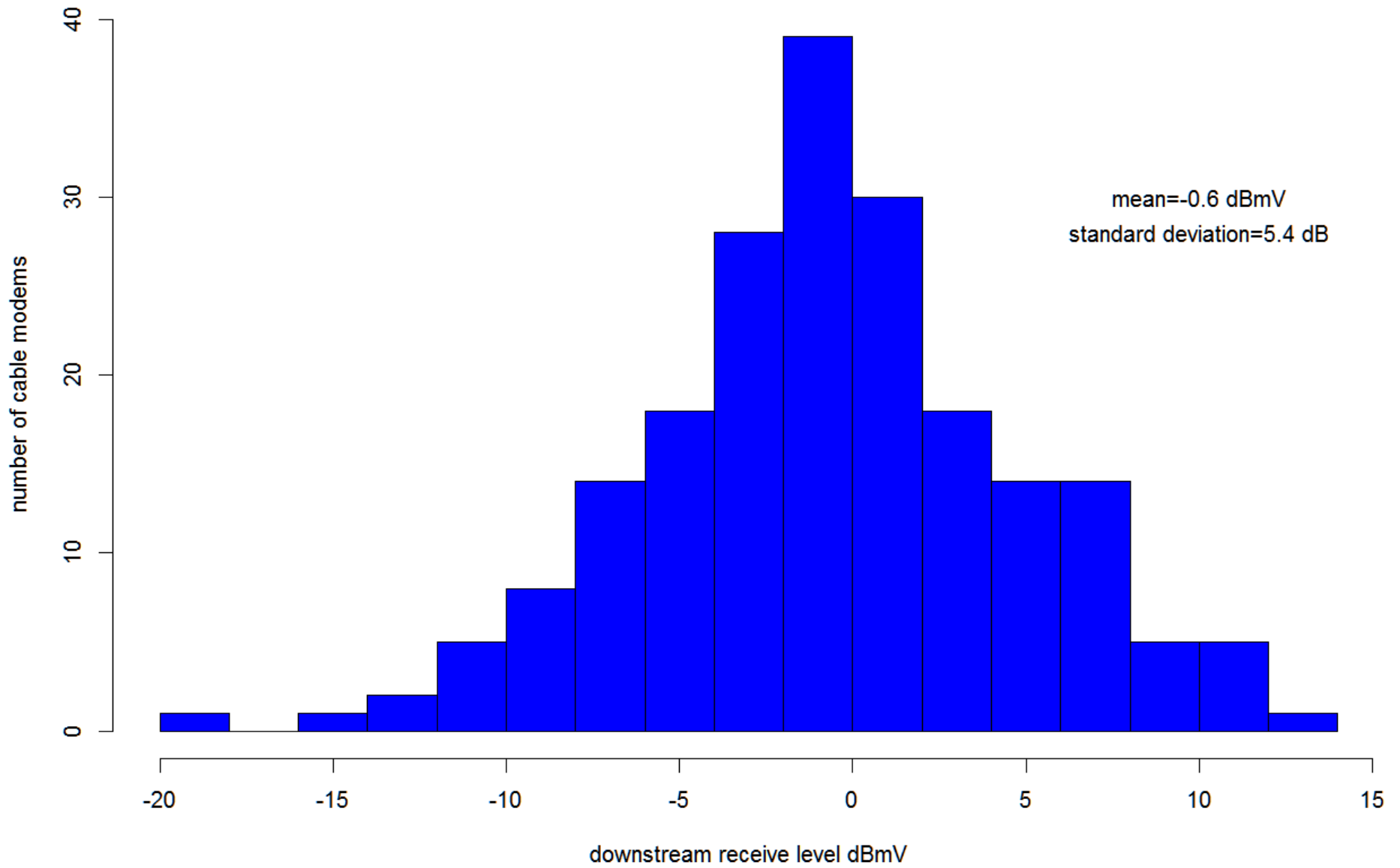
Example Node 2 Data for 219 MTAs



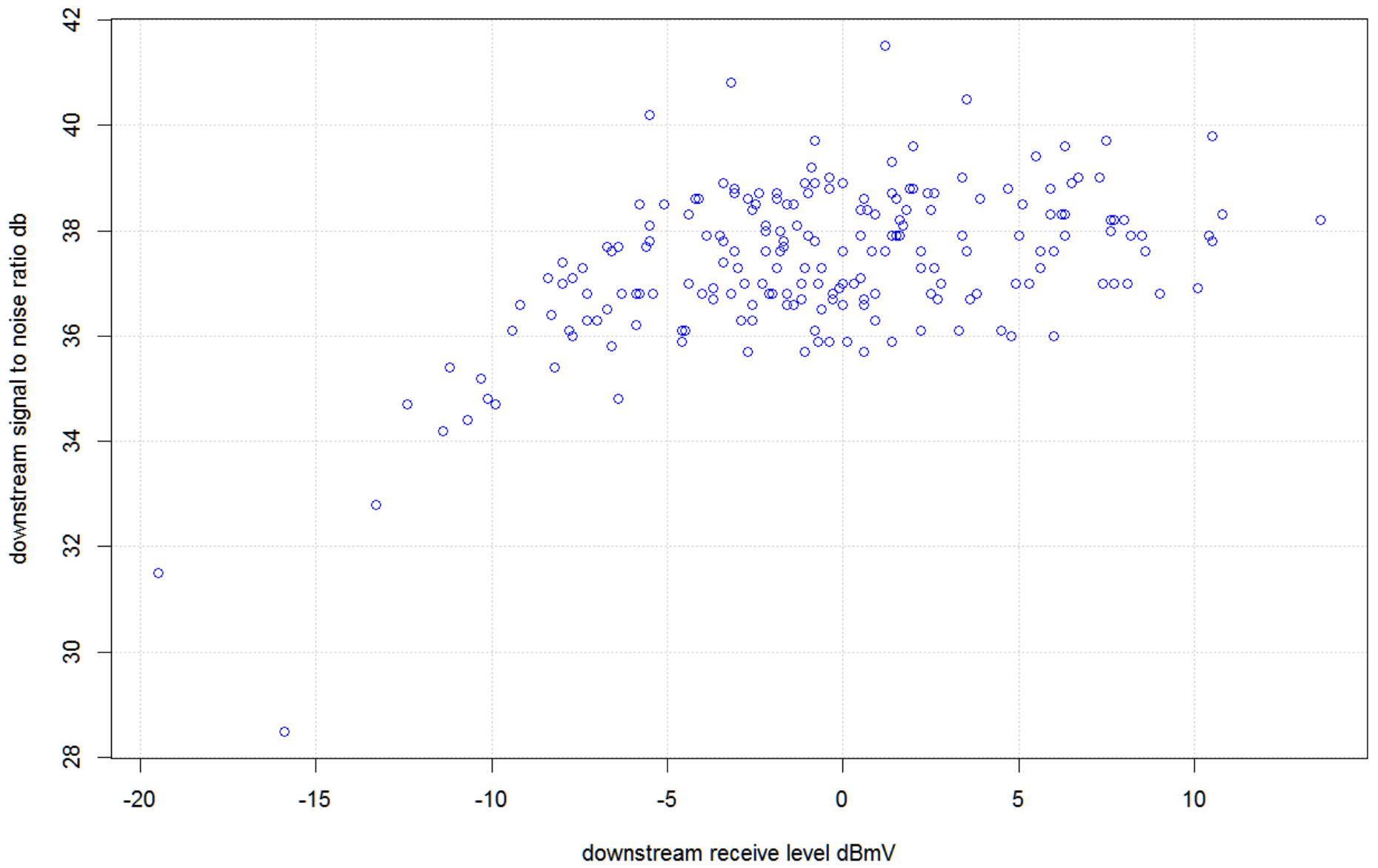
Example Node 2 Data for 219 MTAs



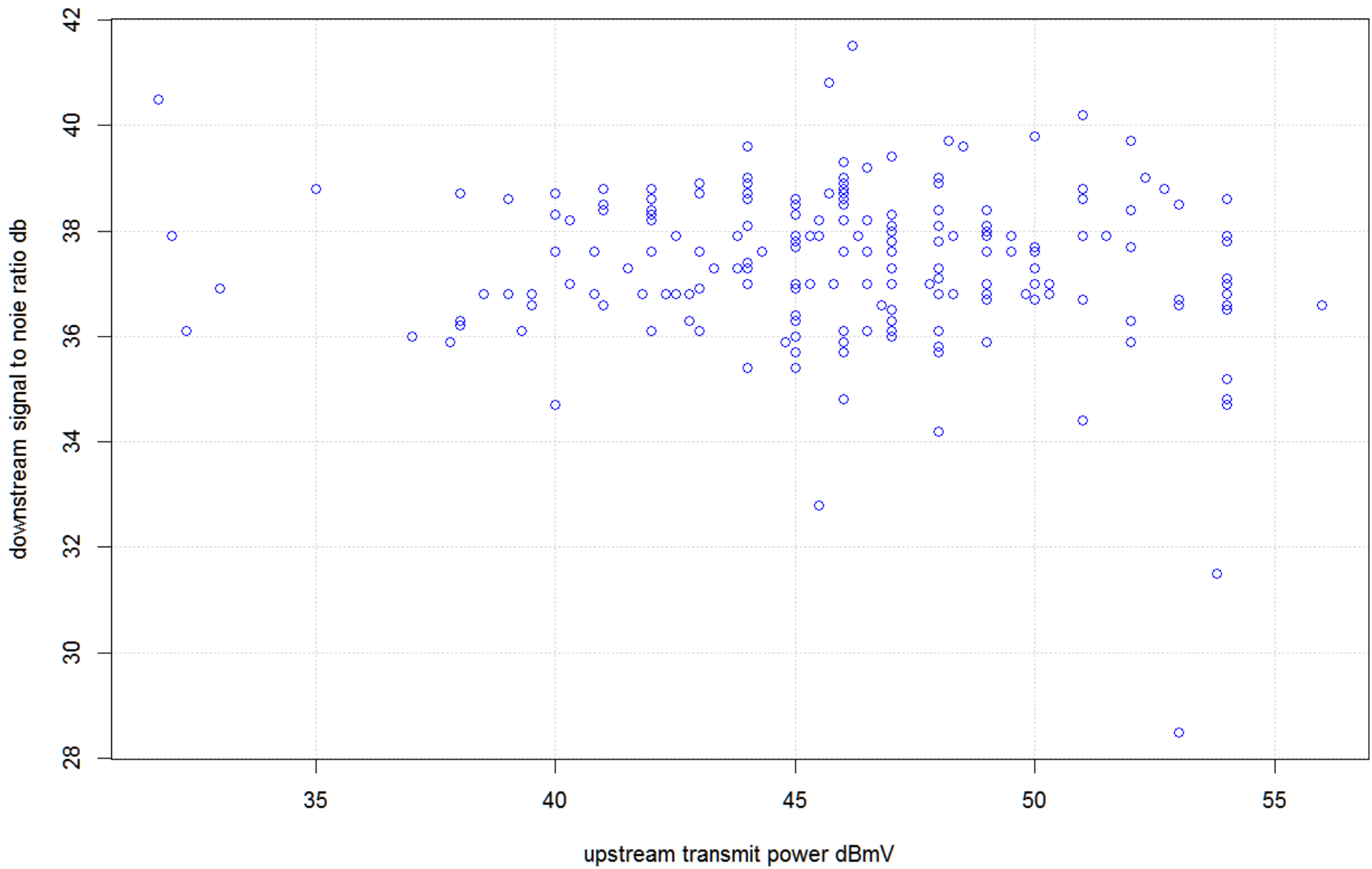
### Example Node 3 with 203 Cable Modems



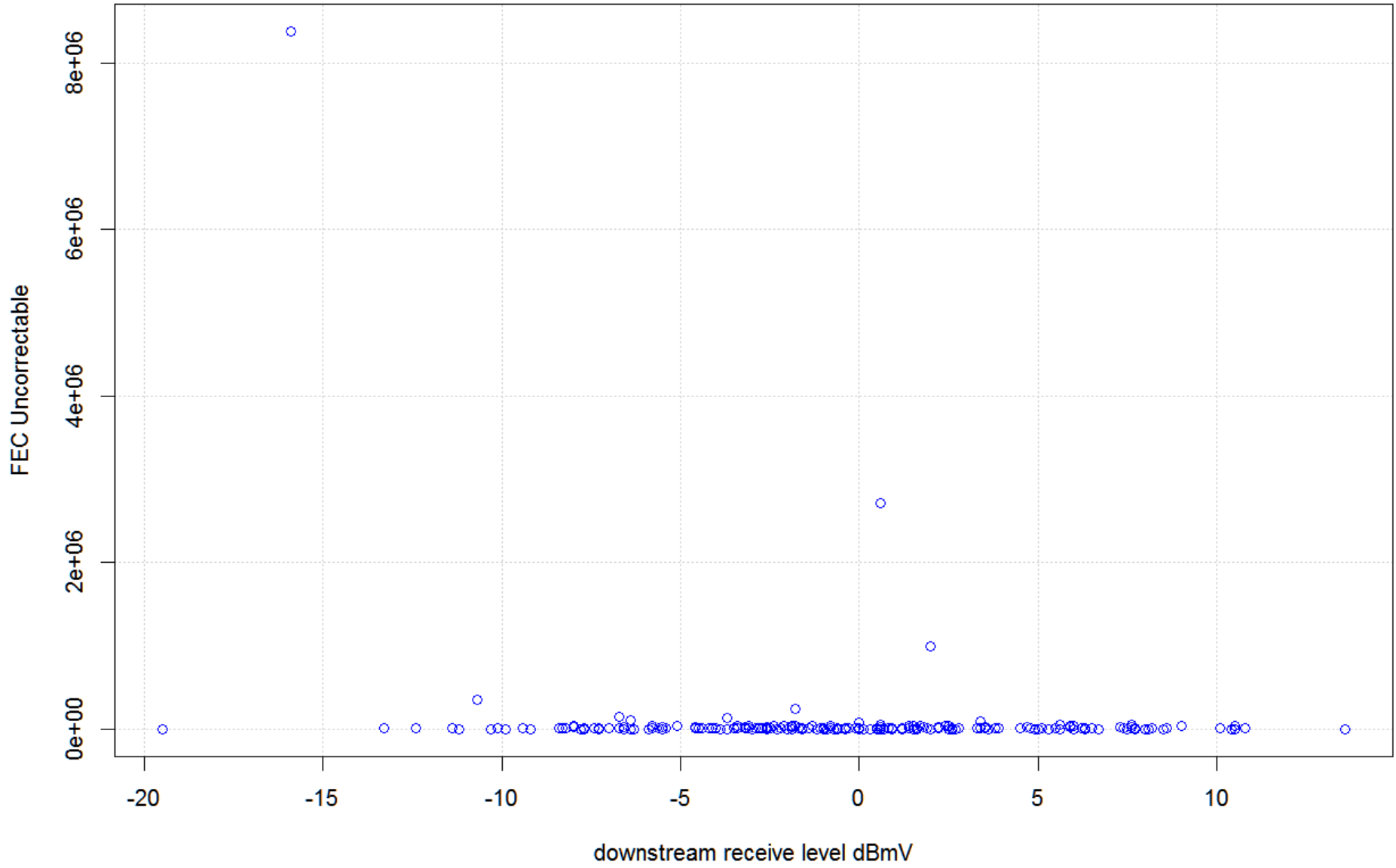
Example Node 3 Data for 203 MTAs



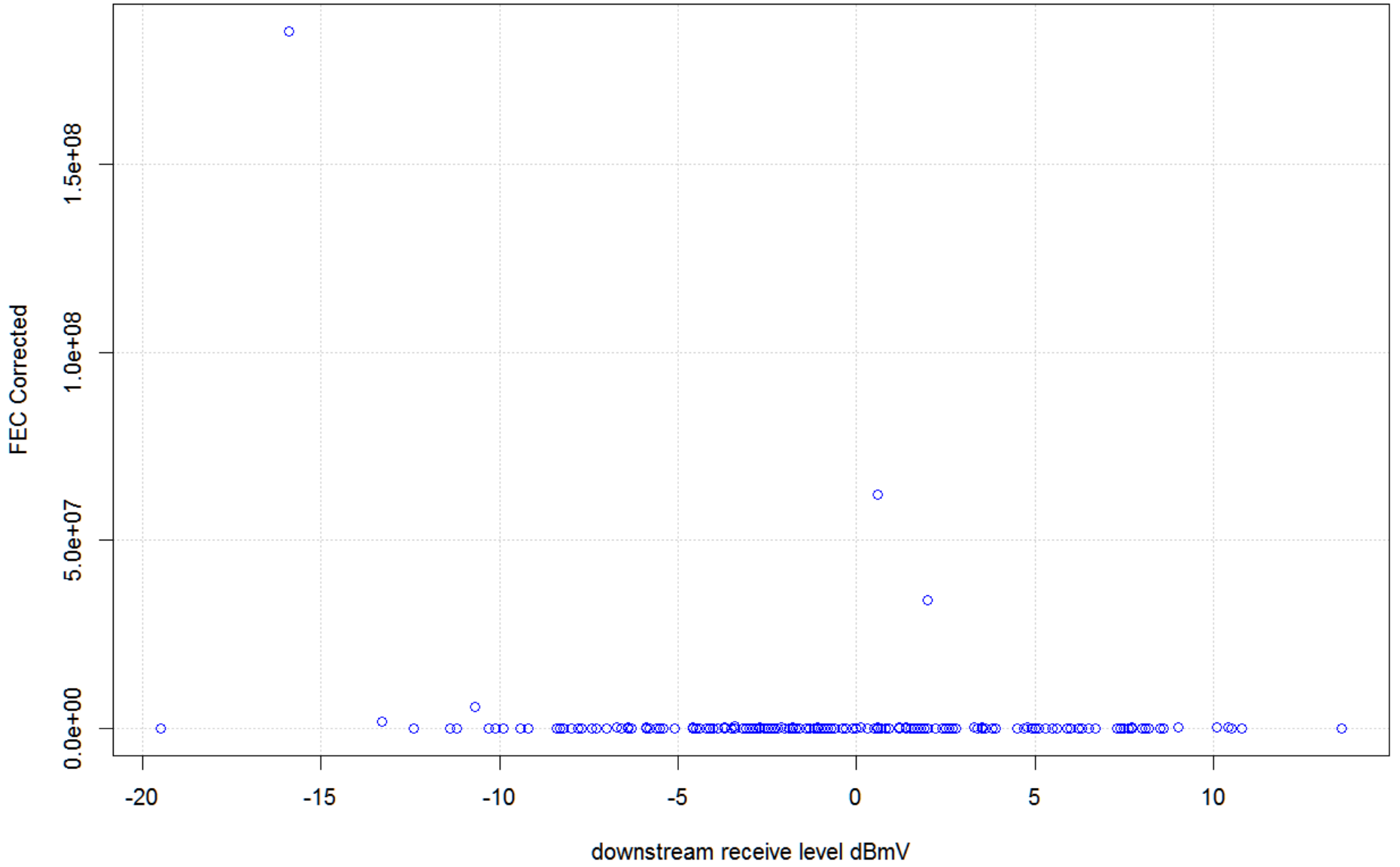
Example Node 3 Data for 203 MTAs



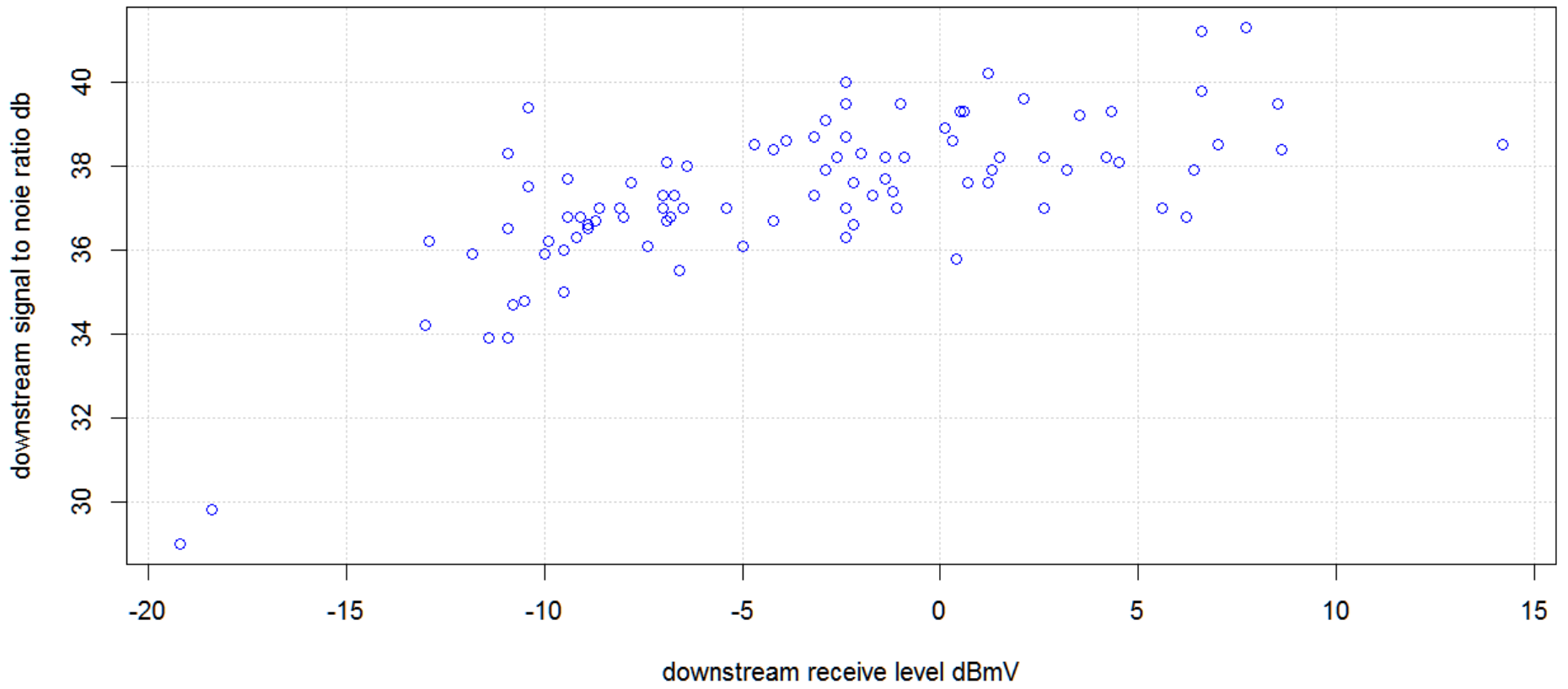
Example Node 3 Data for 203 MTAs



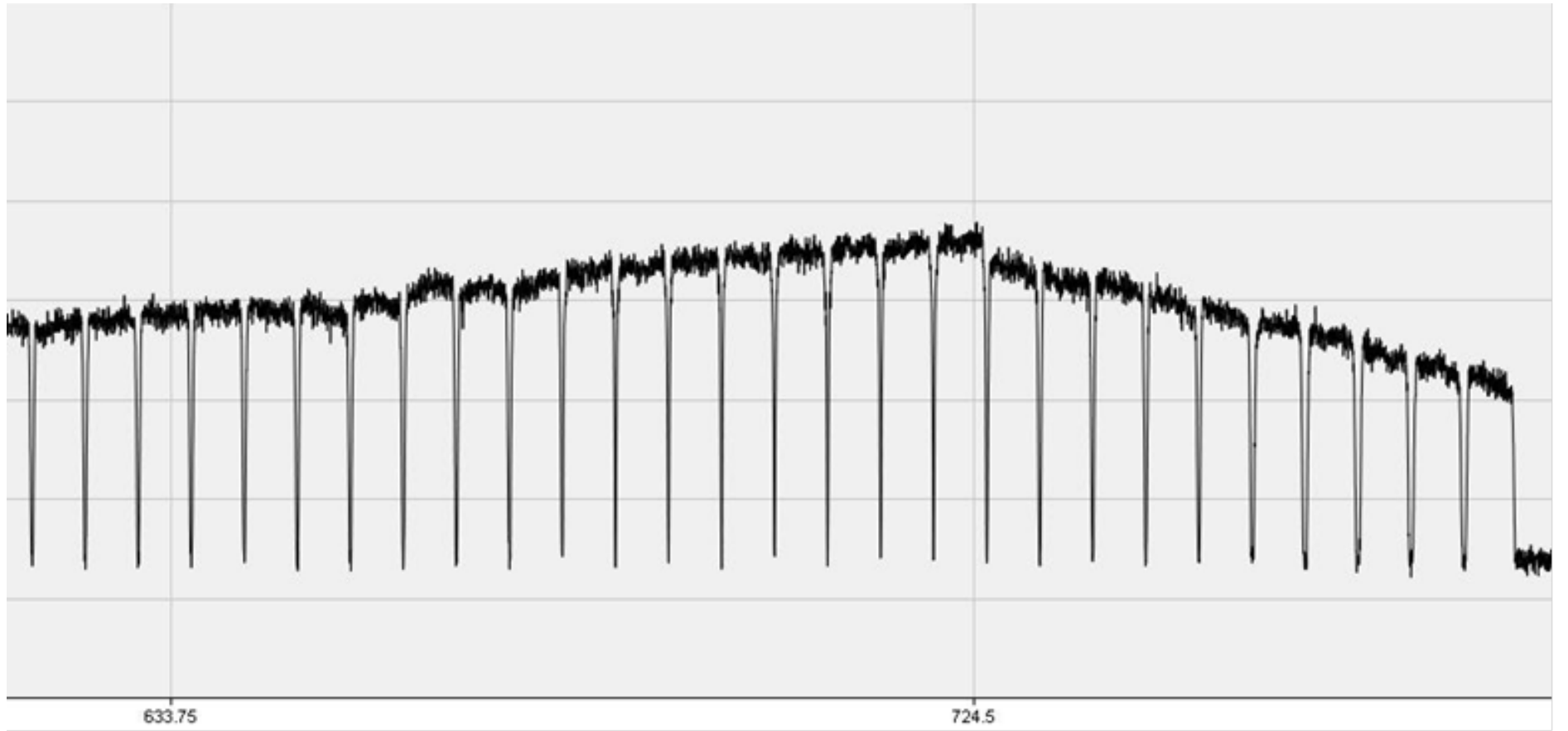
Example Node 3 Data for 203 MTAs

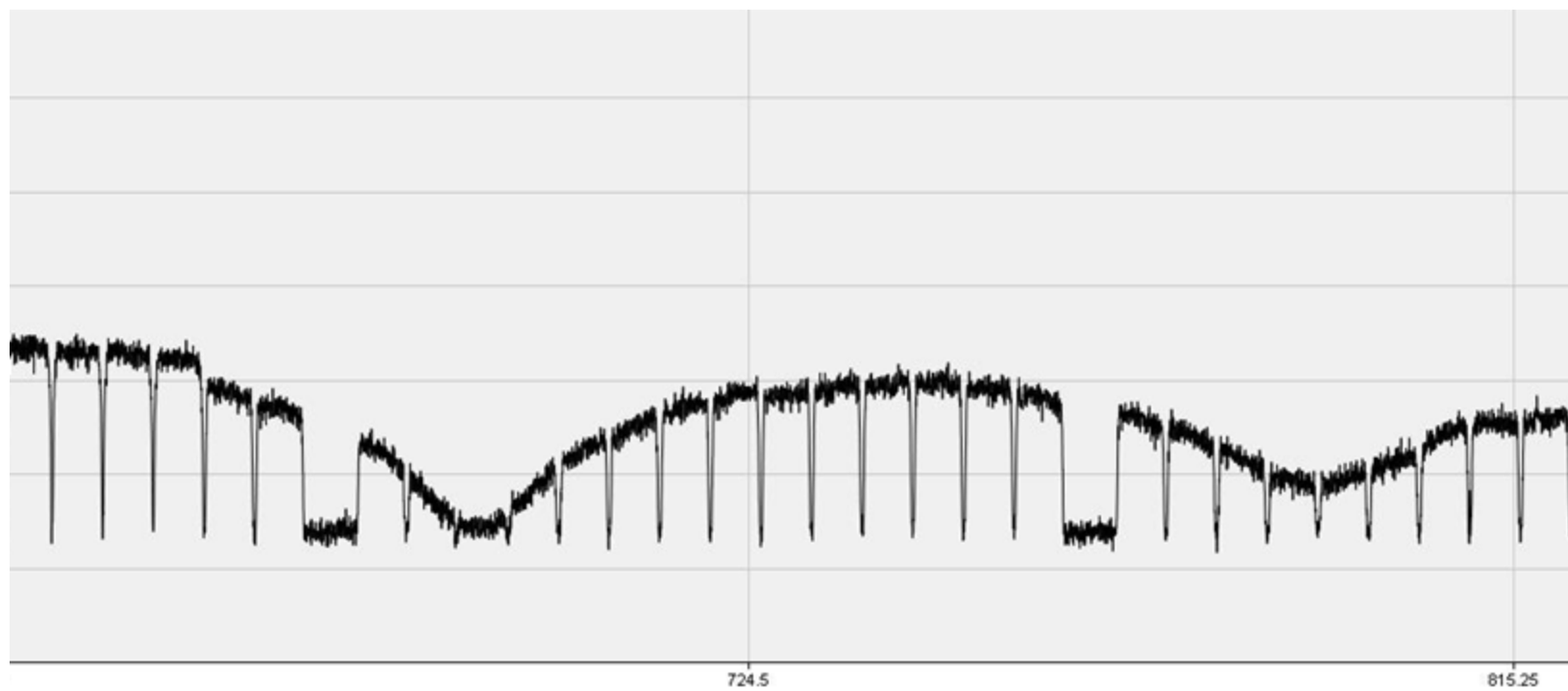


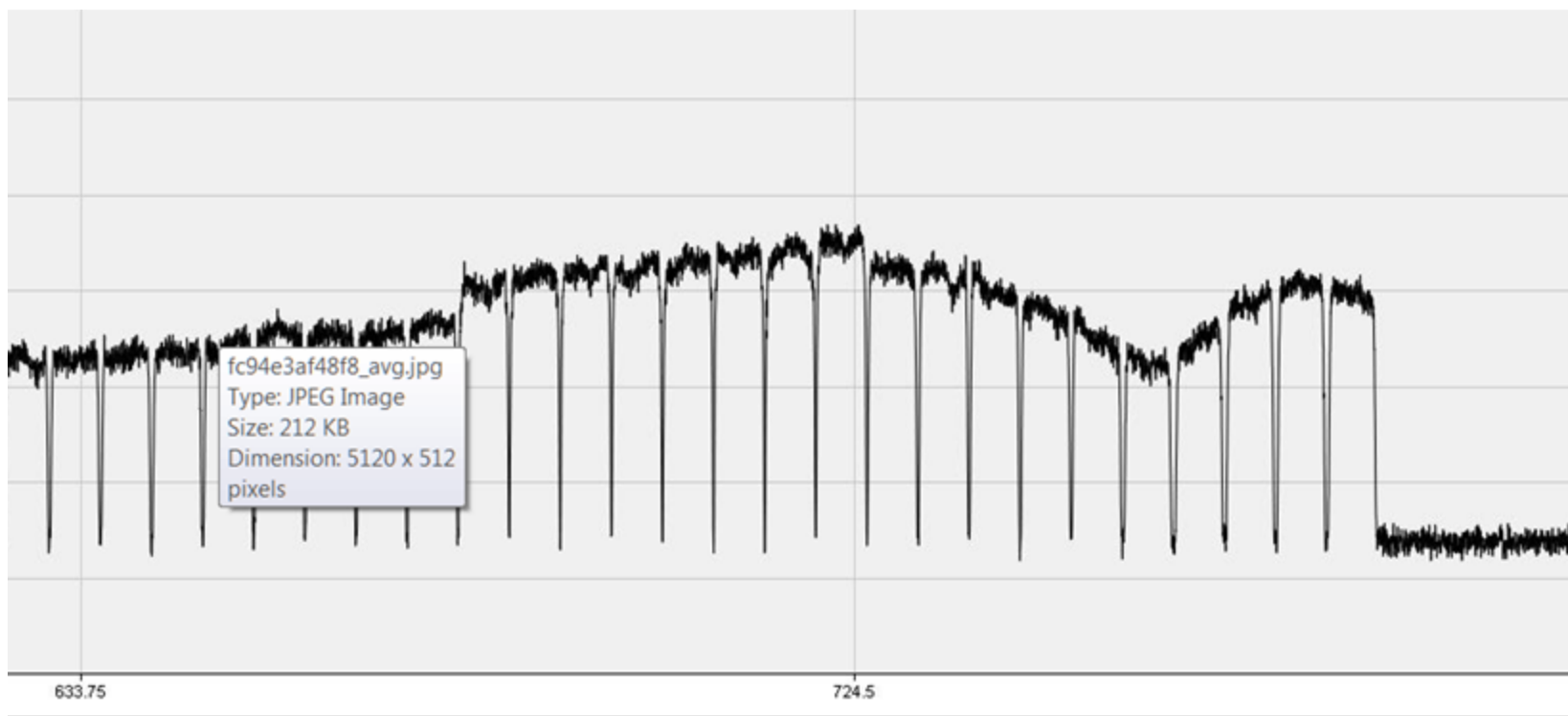
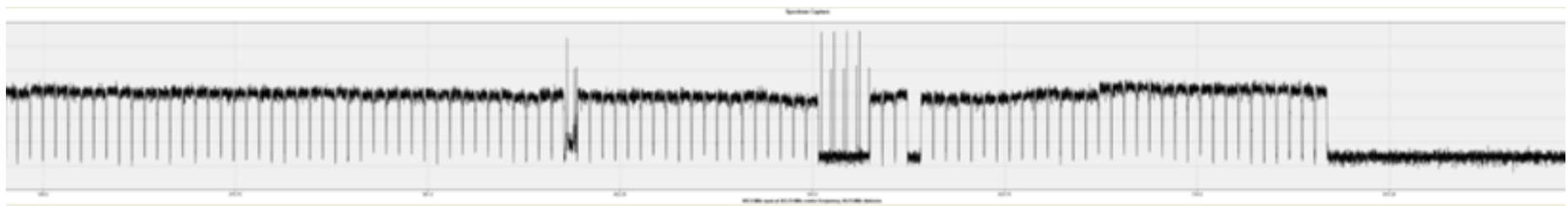
**Example Node Data for 93 MTAs**

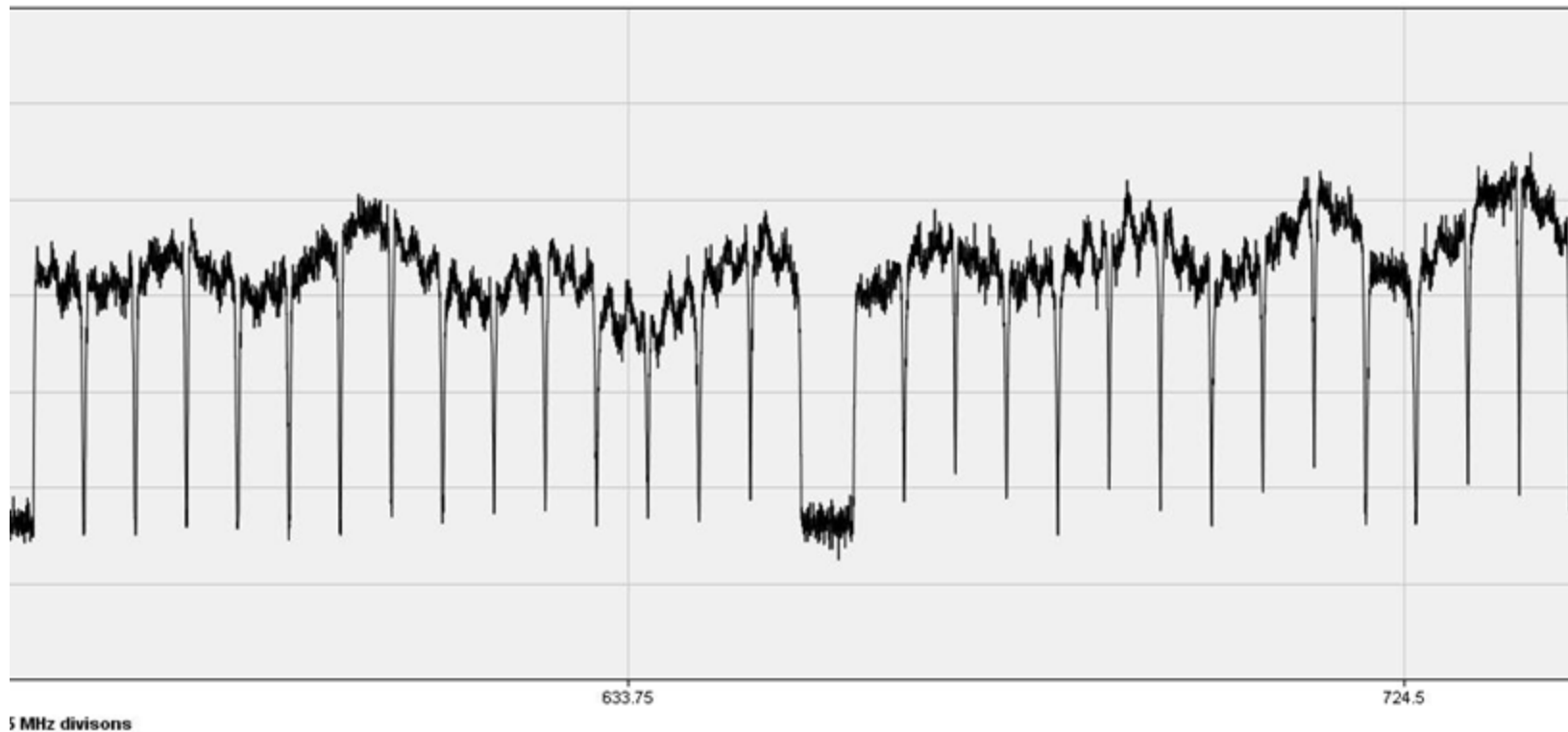


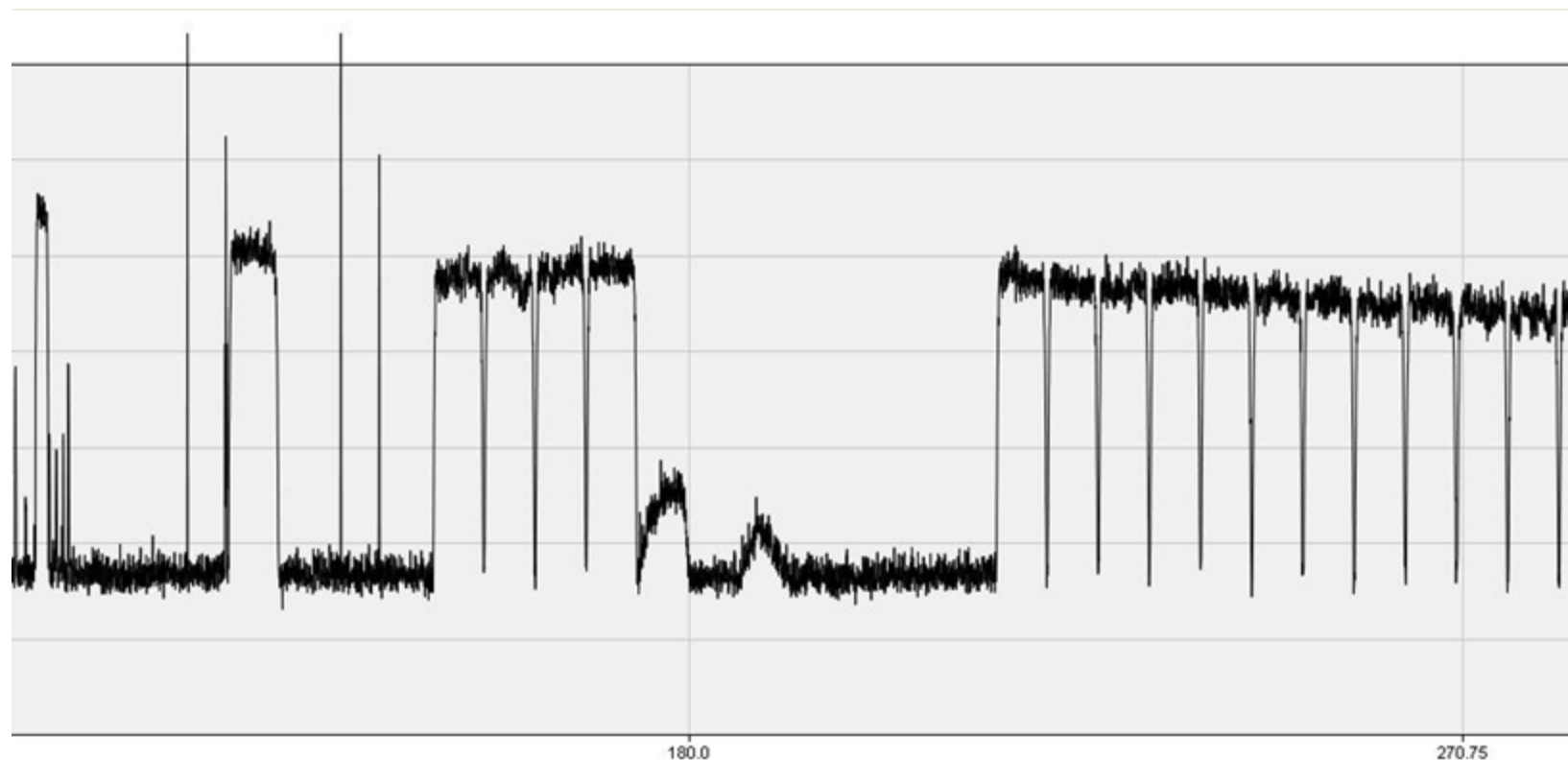


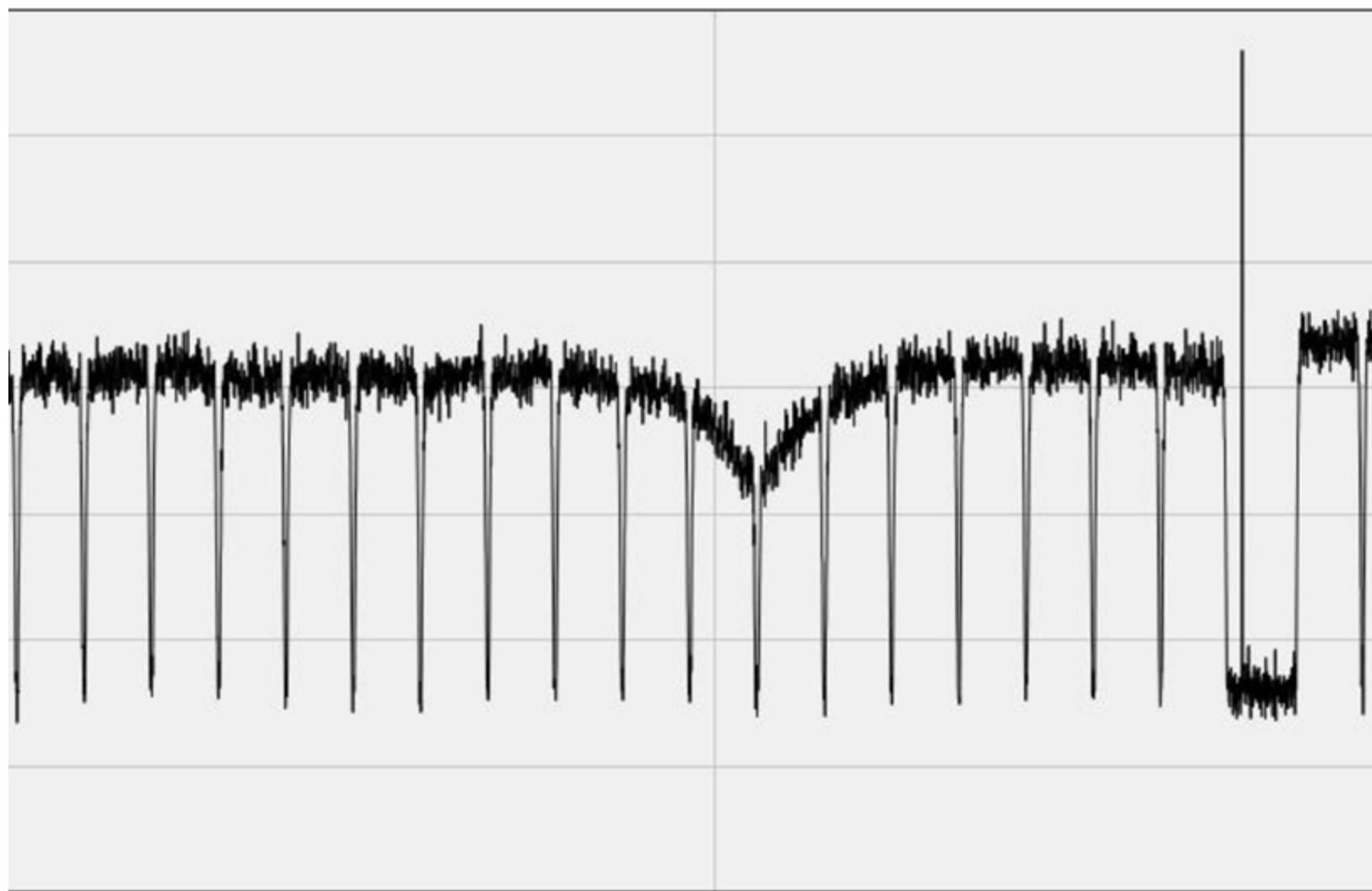




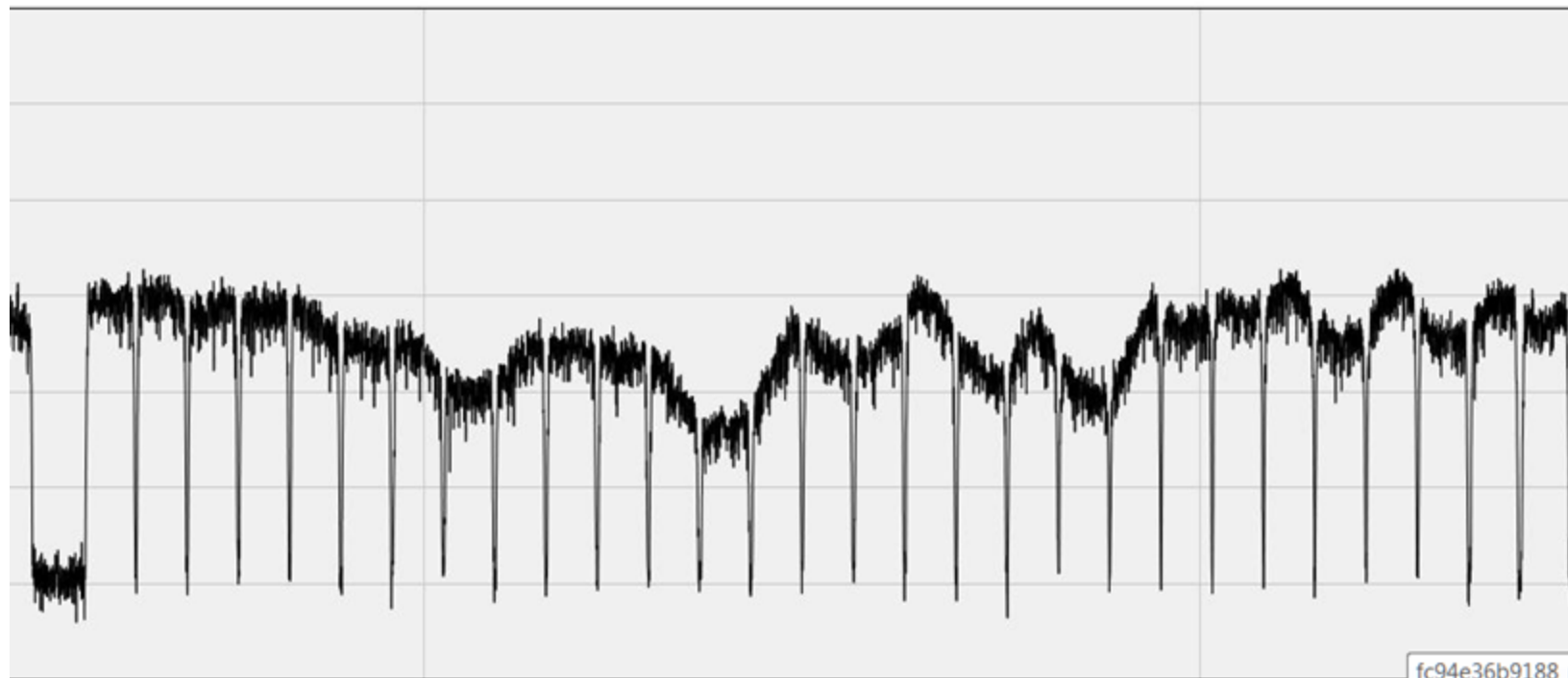








452.25



633.75

724.5

fc94e36b9188\_n  
Type: JPEG Imag  
Size: 244 KB