

# AGENDA AND FRONT MATERIAL

IEEE P802.3CK - 100 GB/S, 200 GB/S, AND 400 GB/S  
ELECTRICAL INTERFACES TASK FORCE

BETH KOCHUPARAMBIL, EMPLOYED BY AND AFFILIATED WITH CISCO SYSTEMS

KENT LUSTED, EMPLOYED BY AND AFFILIATED WITH INTEL CORPORATION

MATT BROWN, EMPLOYED BY AND AFFILIATED WITH HUAWEI CANADA

TELEPHONIC INTERIM SERIES TO ADDRESS COMMENTS TO DRAFT 1.2

JULY 21, 2020

# MEETING

## ■ Attendance

- Attendee names and affiliations for the minutes and as a backup record for this Telephonic meeting will be taken from the WebEx participants list.
- For 802.3 plenary record, please go to <https://imat.ieee.org/attendance> >> select 802 Plenary – July 2020 –Electronic” >> C/LM/WG802.3 Attendance
- Note that to get credit for attending the July Plenary Virtual Plenary, you must record attendance at 6 of 8 dates. See slide 21 of [http://www.ieee802.org/3/minutes/jul20/0720\\_802\\_3\\_opening\\_plenary.pdf](http://www.ieee802.org/3/minutes/jul20/0720_802_3_opening_plenary.pdf) for more information.

## ■ Please mute your lines if you are not speaking

- \*6 does NOT work in WebEx Events – chat or email the chair if you’re having a hard time getting off mute

# AGENDA FOR TWO-DAY SESSION (JULY 21 & 22)

- Approval of the Agenda
- IEEE Participation Requirements reminder (<https://standards.ieee.org/ipr/index.html>)
- IEEE Copyright reminder (<http://www.ieee802.org/devdocs.shtml>)
- IEEE Patent Policy reminder (<http://www.ieee802.org/3/patent.html>)
- Ground Rules and Operations Reminder
- Comment Resolution
- Liaison Response to OIF

# CR Cable Assembly and MDI

Topic	Comments
162 CA: CA IL	181
162 CA: CA DC RL	71*, 181, 148, 74, haser_3ck_adhoc_02_061720.pdf
162 CA: CA CD IL	148*, 181
162 CA: CA CC RL	73*, 181, 76, haser_3ck_adhoc_02_061720.pdf
162 CA: CA COM Tr	149
162 CA: CA COM SNR_TX	37*, 70, 77, 152, 11162
162A: ILMaxHost( <i>f</i> ) TBD, ILCamin( <i>f</i> ) TBD	182
162C: MDI Connector contact map	1, lusted_3ck_01_0720.pdf
162B: Frequency Range	91*, 79, 80, 81, 84, 85, 87, 89, 90
162B: FOM_ILD	83 value, 84 frequency range, 180
162B: ICN	92, 93, 94, 95, 96
162B: RL / CMIL	180*, 86, 87, 88, 89
MDI: MDI connectors require normative references	232*, 233, 234, 251, 252, 253, 254

\* Please note that we may not get through the entire list of the comments sent out for focus at this meeting. If time runs out, leadership will work to adjust comment agendas for future meetings.

# ERL

Topic	Comments
ERL Parameters	<a href="#">champion_3ck_01a_0720.pdf</a> <a href="#">kochuparambil_3ck_01_0720.pdf</a> - discuss with and adopt where there is consensus into Comment #6 -- the rest can be sent to "closed as a result of" bucket Tr Values – 14, 44 N Values – 45*, 50, 51, 52 Nbx Values – 6, 46, 47, 48, 15, 49 ERL Values – 68*, 5, 8, 10, 16, 18, 23 COM Qualifier – 11163
ERL Measurement Method	TDR method – 43
ERL Wording	"beginning of the ____ connector" - 110*, 111, 112, 113 C2M/TP4 table reference - 51*, 50, 52, 19 (21, 24, 26 from bucket)

# CR Cable Assembly COM

Topic	Comments
Channel variables	124, 125, 126, 127, 128, 129, 217, 218, 219, 221, 230
eta0	69, 78, 11161
PN skew	204
Reference DFE	Minimum tap limits - 247 Span - 248 RSS limit - 240, 250
Package transmission line model	150
Units	151 (CC with 163.10 and 120F.4.1)

\* Please note that we may not get through the entire list of the comments sent out for focus at this meeting. If time runs out, leadership will work to adjust comment agendas for future meetings.

## CR TX & Logic

Topic	Comments
linear fit	255
vf(min) CC	141, 165
jitter CC	140*, 168
TX ACCM	203, 55
TX EQ control	144, 258, 256
Swing	257
Return loss	137, 138, 139
Logic	60, 66

\* Please note that we may not get through the entire list of the comments sent out for focus at this meeting. If time runs out, leadership will work to adjust comment agendas for future meetings.

## Participants in the IEEE-SA “*individual process*” shall act independently of others, including employers

- The [IEEE-SA Standards Board Bylaws](#) require that “*participants in the IEEE standards development individual process shall act based on their qualifications and experience*”
- This means participants:
  - **Shall act & vote** based on their personal & independent opinions derived from their expertise, knowledge, and qualifications
  - **Shall not act or vote** based on any obligation to or any direction from any other person or organization, including an employer or client, regardless of any external commitments, agreements, contracts, or orders
  - **Shall not direct** the actions or votes of other participants or retaliate against other participants for fulfilling their responsibility to act & vote based on their personal & independently developed opinions
- By participating in standards activities using the “*individual process*”, you are deemed to accept these requirements; if you are unable to satisfy these requirements then you shall immediately cease any participation

## **IEEE SA COPYRIGHT POLICY**

**By participating in this activity, you agree to comply with the IEEE Code of Ethics, all applicable laws, and all IEEE policies and procedures including, but not limited to, the IEEE SA Copyright Policy.**

- Previously Published material (copyright assertion indicated) shall not be presented/submitted to the Working Group nor incorporated into a Working Group draft unless permission is granted.
- Prior to presentation or submission, you shall notify the Working Group Chair of previously Published material and should assist the Chair in obtaining copyright permission acceptable to IEEE SA.
- For material that is not previously Published, IEEE is automatically granted a license to use any material that is presented or submitted.



## PARTICIPANTS HAVE A DUTY TO INFORM THE IEEE

- Participants shall inform the IEEE (or cause the IEEE to be informed) of the identity of each holder of any potential Essential Patent Claims of which they are personally aware if the claims are owned or controlled by the participant or the entity the participant is from, employed by, or otherwise represents
- Participants should inform the IEEE (or cause the IEEE to be informed) of the identity of any other holders of potential Essential Patent Claims

**Early identification of holders of potential  
Essential Patent Claims is encouraged**

# PARTICIPANTS HAVE A DUTY TO INFORM THE IEEE OF POTENTIALLY ESSENTIAL PATENTS...

## Ways to inform IEEE

- **Cause an LOA to be submitted to the IEEE-SA ([patcom@ieee.org](mailto:patcom@ieee.org)); or**
- **Provide the chair of this group with the identity of the holder(s) of any and all such claims as soon as possible; or**

- **Speak up now and respond to this Call for Potentially Essential Patents**

If anyone in this meeting is personally aware of the holder of any patent claims that are potentially essential to implementation of the proposed standard(s) under consideration by this group and that are not already the subject of an Accepted Letter of Assurance, please respond at this time by providing relevant information to the WG Chair

# GROUND RULES & OPERATIONS

- Recording is prohibited – Is anyone here press?
- **RESPECT one another**... give it, get it
- 10 min presentations (including Q&A)
- Raise your hand or send a chat to be added to the queue
- Trust in Editorial License

Viewing Matt Brown (Guest)...

Speaking: Jeff Slavick (Guest)

RM

Brief Tutorial  
 This interface looks slightly different based upon your operating system, but general function should be the same!

RICHARD MELLITZ (Guest)

Participants (9)

Search

Panelist: 6

BK Beth Kochuparambil (Cisco) Host

MB Matt Brown (Gue...

JS Jeff Slavick (Guest)

KL Kent Luste...

PS Phil Sun (Guest)

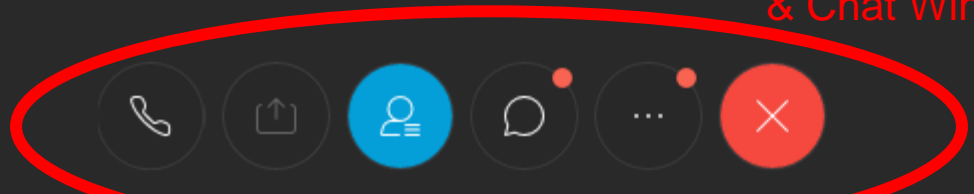
RM RICHARD MELLITZ (Guest)

Attendee: 3 (1 displayed)

View Attendee List

Raise Hand

Polling Tab



# MOTION #?

Move to adopt the proposed responses in  
[comments\\_proposedclosure\\_as\\_a\\_result\\_of\\_3ck\\_02\\_0720.pdf](#)

- Moved by:
- Seconded by:
  
- Technical (>75%)
- Y: N: A:

## MOTION #?

Move to adopt the proposed responses in [8023ck\\_D1p2\\_comments\\_proposed\\_bucket.pdf](#) except comments 1, 3, 4, 21, 24, 26, 41, 61, 62, 63, 64, 127, 128, 159, 169, 179, 213, 214, 216, 219, 227, 237, 239, 244

- Moved by:
- Seconded by:
  
- Technical (>75%)
- Y: N: A:



THANK YOU!



# DI.2 TELEPHONIC INTERIM SERIES & MARCH PLENARY

- Tuesday, 6/30 – Misc. Topics
- Monday, 7/6 – C2C/KR
- Wednesday, 7/8\* – C2M
- Wednesday, 7/15\* – ERL/C2M
- Tuesday, 7/21 – CR
- Wednesday, 7/22\* – TBD
- Tuesday, 7/28 – TBD
- Wednesday, 7/29\* – TBD

## 7-10am PDT

\*Bridge will open 30min early for “public discussions” on Wed. Telephonic Interims

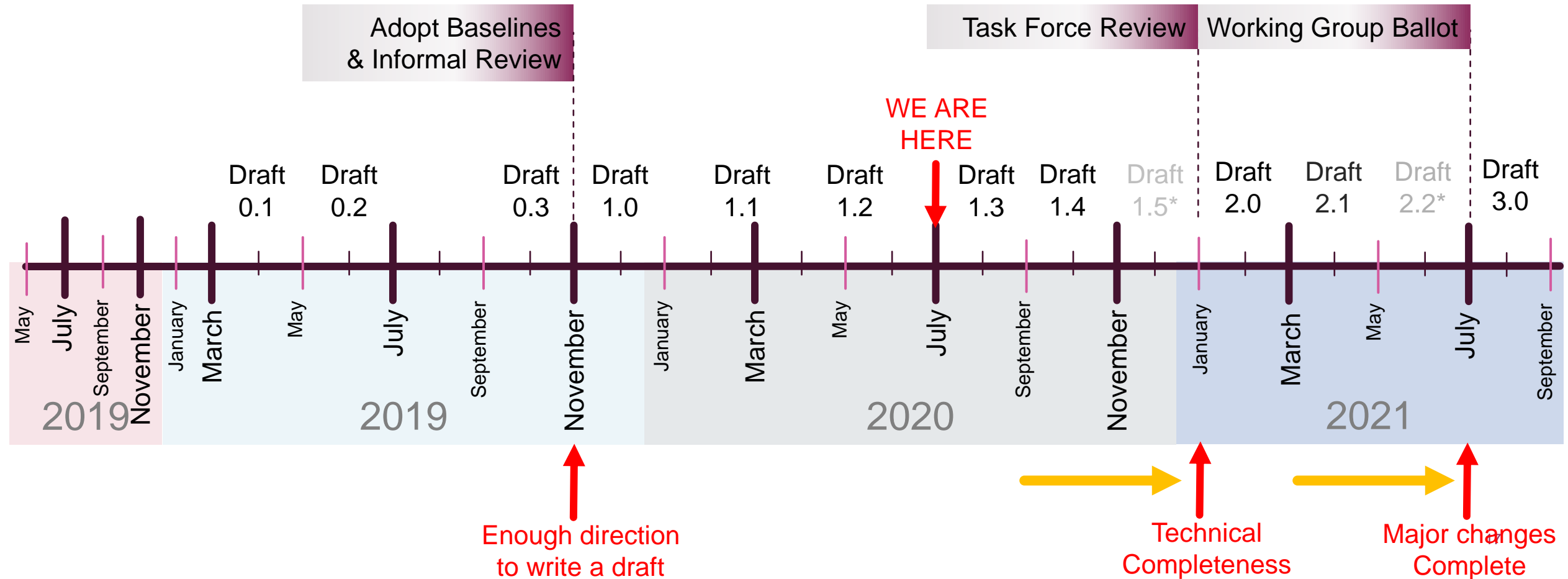
Consensus Building Presentations and Updates on these topics due the Friday before the topic is to be covered... Noon PDT

## ■ July Plenary

- Attend 6 out of 8 days between 7/13-7/23 (Mondays-Thursdays)
- See: <http://www.ieee802.org/3/calendar.html>
- Name will change of calls during plenary week – nothing else



# TASK FORCE STATUS – LIKELY PUSHING WG BALLOT TO 2021



# COMMON COMMENT RESOLUTION PROCESS (.3CK,.3CU,.3CT)

## ■ Comment Status Terminology

- “Open” comments – comments that Task Force have not agreed upon a remedy
- “Closed” comments – comments that Task Force have agreed upon a remedy
- “Final” comments – Task Force has approved motion to adopt the responses to the closed comments

## ■ Allow individuals (other than commenter) two business days (AoE, ~67hrs) to request, *via the reflector*, a “Closed” comment, *from the prior meeting only*, be considered for re-opening

- Post updated comment database after each meeting
- Individual needs to be present at next meeting to address
- Normal procedures within the group will apply to determine if comment will be re-opened

## ■ After comment resolution is over – normal procedures to adopt responses and generate next draft will be followed

# IEEE STRUCTURE

**IEEE-SA**  
Standards Association

Standards | Process

**IEEE-SA**  
Standards Board

**RevCom**  
Review Committee

**NesCom**  
New Stds. Committee

**IEEE 802**  
Sponsor Group

**IEEE 802.3**  
Working Group

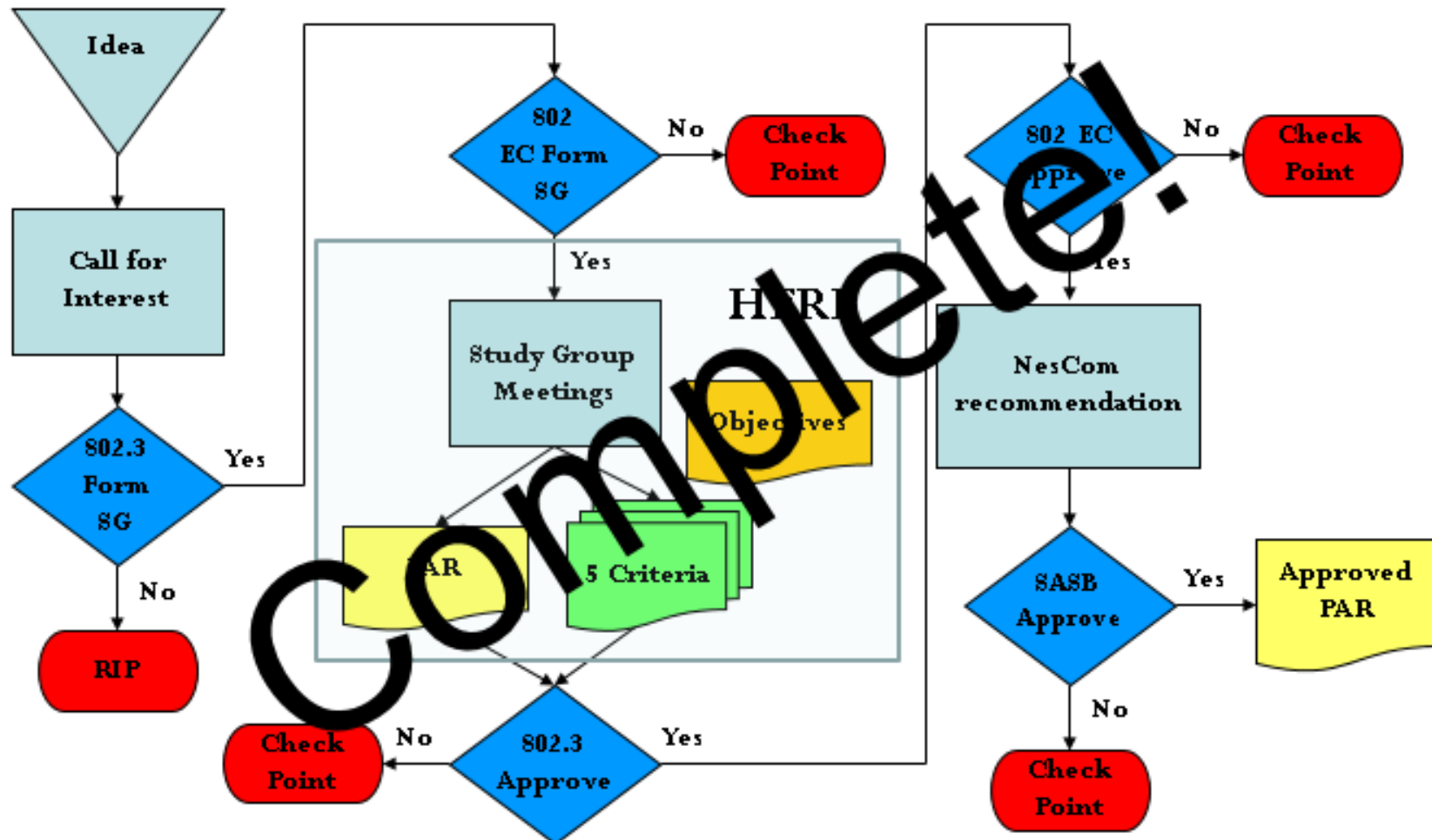
**IEEE 802.3**  
Task Force

Approval Process

Standards Process

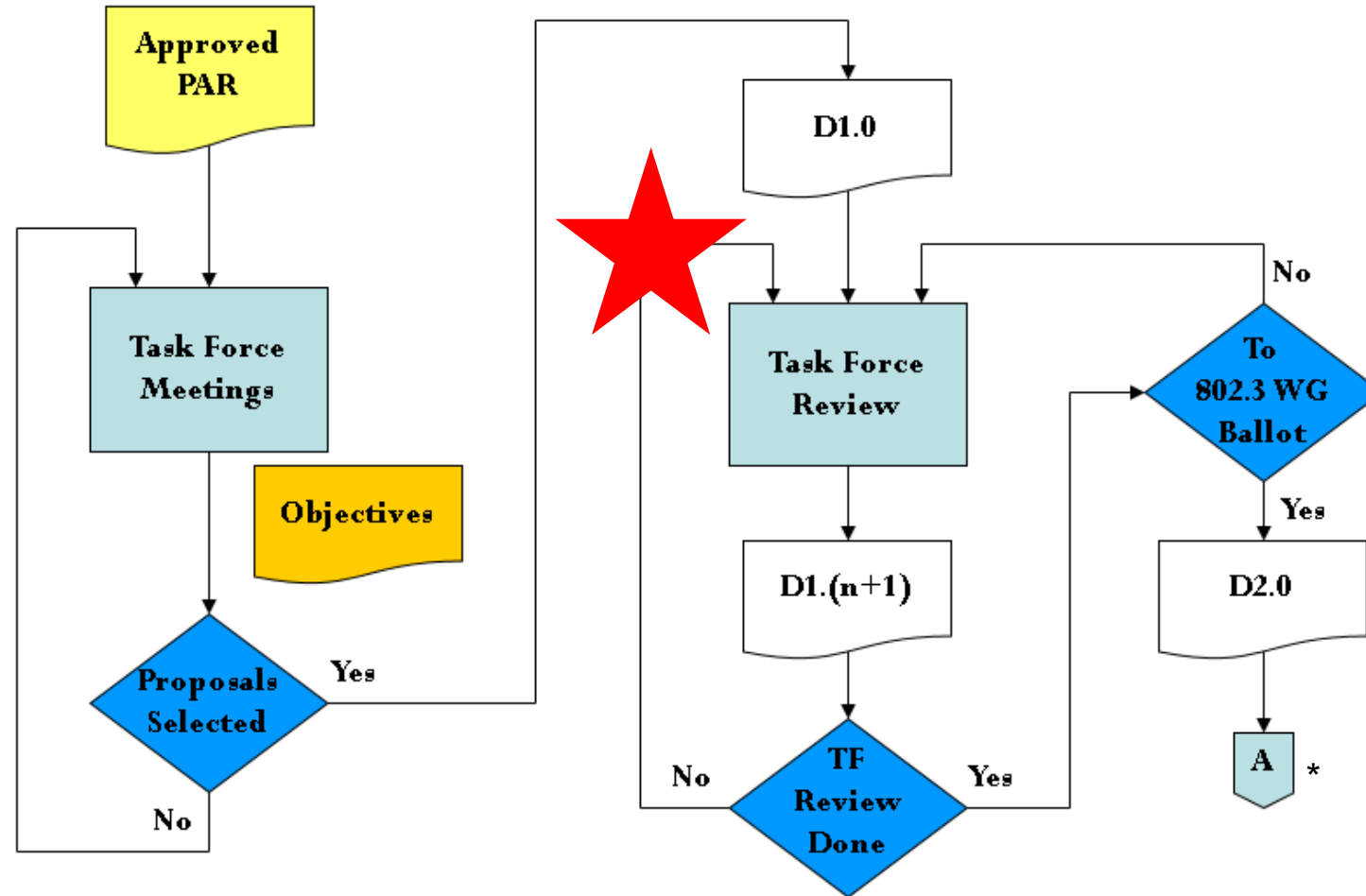
Technical Activities

# Overview of IEEE 802.3 Standards Process (1/5)- Study Group Phase

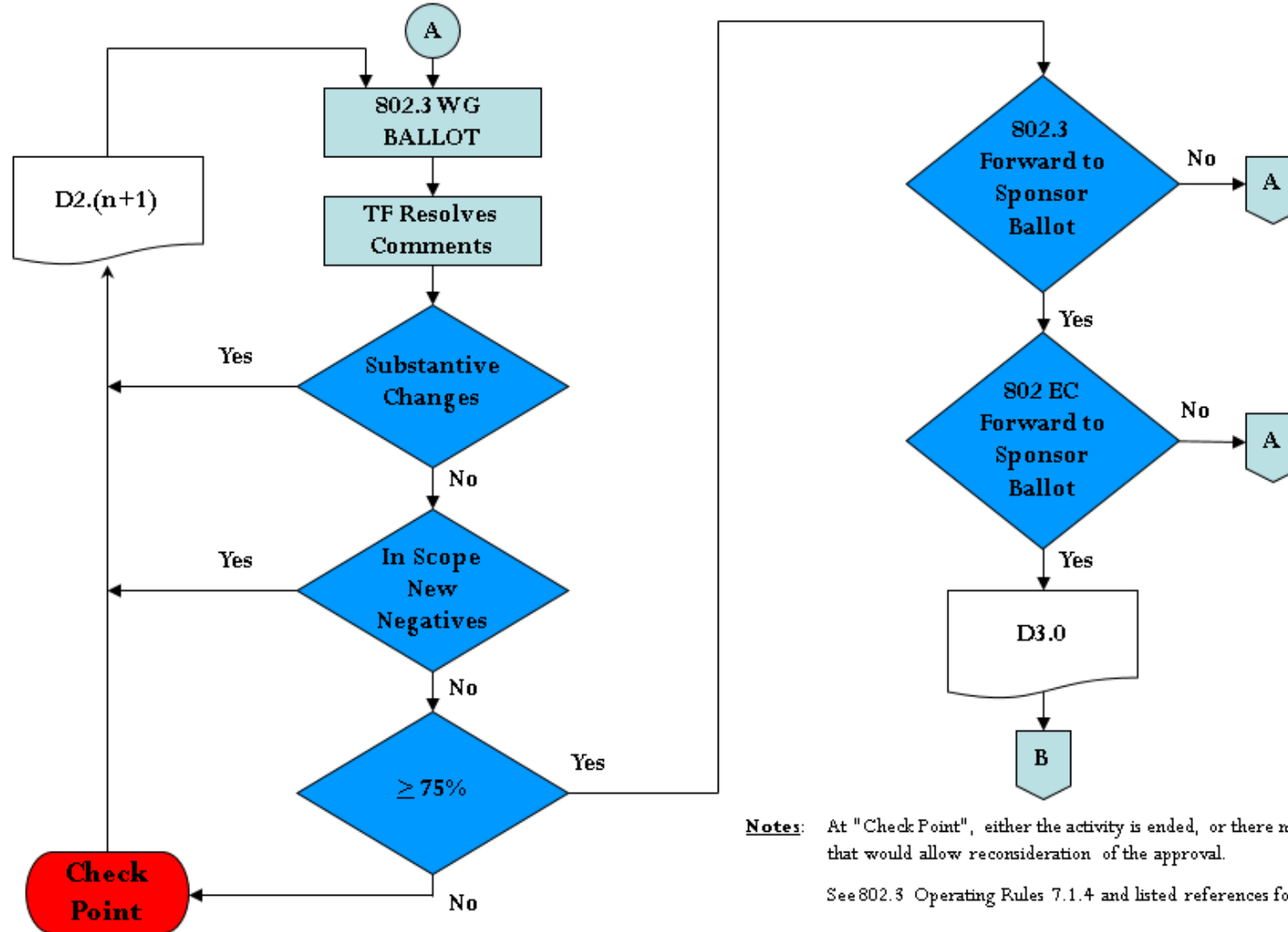


Note: At "Check Point", either the activity is ended, or there may be various options that would allow reconsideration of the approval.

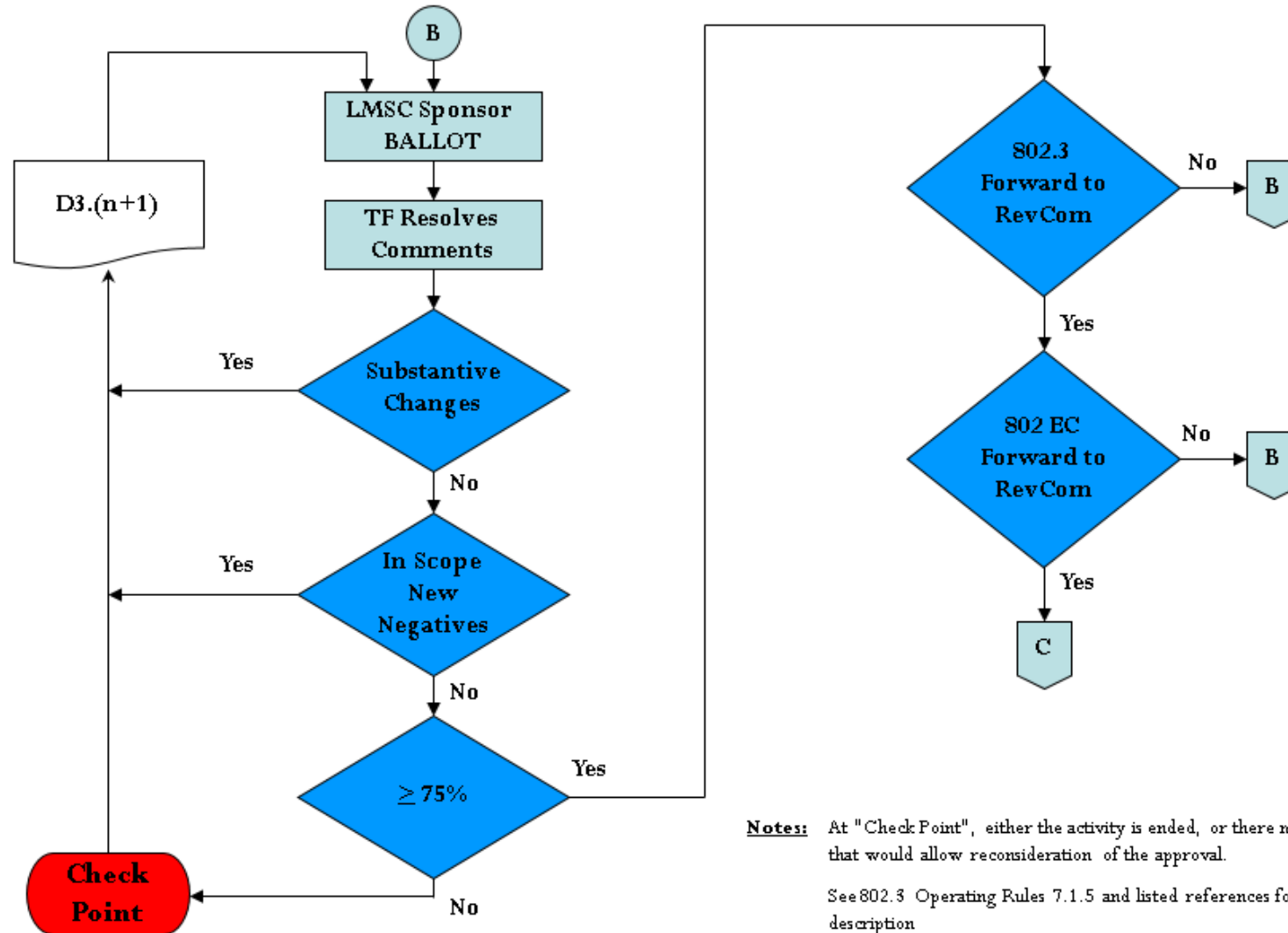
# Overview of IEEE 802.3 Standards Process (2/5) – Task Force Comment Phase



# Overview of IEEE 802.3 Standards Process (3/5) – Working Group Ballot Phase



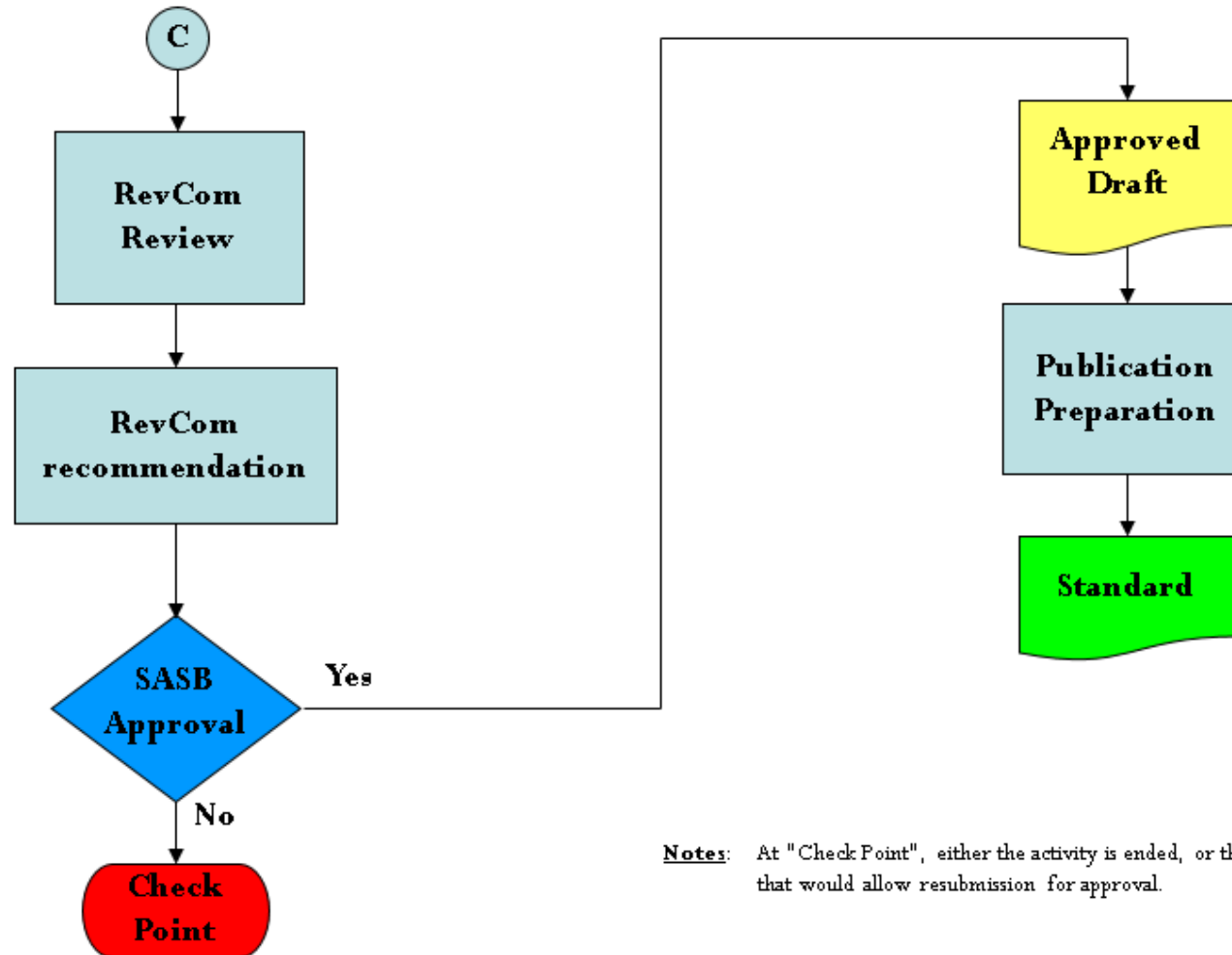
# Overview of IEEE 802.3 Standards Process (4/5)- Sponsor Ballot Phase



**Notes:** At "Check Point", either the activity is ended, or there may be various options that would allow reconsideration of the approval.

See 802.3 Operating Rules 7.1.5 and listed references for complete description

# Overview of IEEE 802.3 Standards Process (5/5) – Final Approvals / Standard Release



**Notes:** At "Check Point", either the activity is ended, or there may be various options that would allow resubmission for approval.



# IEEE P802.3CK – 100 GB/S, 200 GB/S, 400 GB/S ELECTRICAL INTERFACES TASK FORCE - APPROVED PROJECT DOCUMENTS

- PAR: [http://www.ieee802.org/3/ck/P802\\_3ck\\_PAR\\_140518.pdf](http://www.ieee802.org/3/ck/P802_3ck_PAR_140518.pdf)
- CSD: [http://www.ieee802.org/3/ck/P802\\_3ck\\_CSD\\_06apr18.pdf](http://www.ieee802.org/3/ck/P802_3ck_CSD_06apr18.pdf)
- Objectives: [http://www.ieee802.org/3/ck/P802\\_3ck\\_Objectives\\_2018mar.pdf](http://www.ieee802.org/3/ck/P802_3ck_Objectives_2018mar.pdf)

## REFLECTOR AND WEB

- To subscribe to the 100GEL reflector, send an email to:

*ListServ@ieee.org*

with the following in the body of the message (do not include “<>”):

*subscribe* STDS-802-3-100GEL <yourfirstname> <yourlastname>

*end*

- Send 100GEL reflector messages to:

*STDS-802-3-100GEL@LISTSERV.IEEE.ORG*

- Task Force  web page URL:

*http://www.ieee802.org/3/ck/index.html*

# IMPORTANT BYLAWS AND RULES

- **IEEE-SA Operations Manual**  
[http://standards.ieee.org/develop/policies/sa\\_opman/](http://standards.ieee.org/develop/policies/sa_opman/)
- **IEEE-SA Standards Board Bylaws**  
<http://standards.ieee.org/develop/policies/bylaws/>
- **IEEE-SA Standards Board Operations Manual**  
<http://standards.ieee.org/develop/policies/opman/>
- **IEEE 802 LAN/MAN Standards Committee (LMSC) Policies and Procedures**  
<https://ieee.app.box.com/v/PandP-LMSC>
- **IEEE 802 LAN/MAN Standards Committee (LMSC) Operations Manual**  
<http://www.ieee802.org/devdocs.shtml>
- **IEEE 802 LAN/MAN Standards Committee (LMSC) Working Group (WG) Policies and Procedures**  
<http://www.ieee802.org/devdocs.shtml>
- **IEEE 802.3 Working Group Operating Rules**  
[http://ieee802.org/3/rules/P802\\_3\\_rules.pdf](http://ieee802.org/3/rules/P802_3_rules.pdf)