

# July 2024 IEEE 802 Plenary Session

Event Summary and Important Information

Prepared By: Face to Face Events, June 27, 2024

# Meeting Planner Contact Information

**Dawn Slykhouse, Face to Face Events**

Mobile: +1 (408) 594-1342

Email: [dawns@facetoface-events.com](mailto:dawns@facetoface-events.com)

**Lisa Ronmark, Face to Face Events**

Mobile: +1 (604) 316-4947

Email: [lisa@facetoface-events.com](mailto:lisa@facetoface-events.com)

**Stephanie Williams, Face to Face Events**

Mobile: +1 (408) 497-9613

Email: [stephanie@facetoface-events.com](mailto:stephanie@facetoface-events.com)

**Meeting Planner Office:** Salon 6

**Registration:** Ballroom Foyer, Level 4

# Network Access and Support Information

## Plenary Session Network

- **SSID:** IEEE802
- **Password:** ieeeieee

This SSID will support all IEEE 802.11 compliant devices using any of the 2.4GHz, 5GHz or 6GHz radio bands.

## IEEE 802 Documents: Local Document Server

- <http://ieee802.linespeed.com/>

## Onsite Network Support

Members of the Linespeed team can be dispatched by contacting the Meeting Planner directly or by placing a request at the event registration desk.

## Linespeed Events Contact Information

**Richard Alvin**

Mobile: +1 (585) 781-0952

Email: [rick@linespeed.com](mailto:rick@linespeed.com)

**Network Office:** Salon 6

# Audio Visual Support – Onsite support

## WHO TO CONTACT IF AUDIO VISUAL EQUIPMENT ISN'T WORKING IN YOUR ONSITE MEETING ROOM

Please contact the Meeting Planner directly if you have any issues with the audio visual equipment in your meeting room. The Meeting Planner will contact support and the appropriate technician will be sent to assist as soon as possible.

Meeting Planner can be reached at:

- Registration and Information Desk: Ballroom Foyer, Level 4 Le Centre Sheraton Montreal
- Event Office: Salon 6
- Via Text or Call: Lisa Ronmark: +1 (604) 316-4947, Stephanie Williams +1 (408) 497-9613

## WEBEX AUDIO IN THE ONSITE MEETING ROOM

If you are a local participant, PLEASE, select **“Don't connect to audio”** when joining WebEx.

Connecting to the audio, may cause an audio interference or a feedback loop that will disrupt the meeting.

# Badge Pick Up and In Person Registration Times and Location

- **Sunday**
  - Registration Counter, Ballroom Foyer Level 4 Le Centre Sheraton Montreal
  - 5:00 PM - 7:30 PM
- **Monday - Wednesday**
  - Registration Counter, Ballroom Foyer Level 4 Le Centre Sheraton Montreal
  - 7:30 AM - 5:00 PM
- **Thursday**
  - Event Office, Salon 6, Level 3 Le Centre Sheraton Montreal
  - 8:00 AM - 5:00 PM

# *IEEE 802 Newcomer Orientation*

Monday July 8th

11:00 AM or 10:00 PM ET

**WHO:** IEEE 802 Newcomers (and all others!)

**WHAT:** IEEE 802 Orientation Program

**WHEN:** Monday 8 July, 11 AM ET and or Monday 8 July, 10 PM ET

**WHERE:** WebEx Link: <https://ieeesa.webex.com/ieeesa/j.php?MTID=md68b84ad111f7d97b2213bd1867d8b22>  
Meeting number (access code): 2344 643 3773 Meeting password: 802sec

or IEEE 802 Calendar [https://ieee802.org/802tele\\_calendar.html](https://ieee802.org/802tele_calendar.html)

## **HOW TO PREPARE:**

Please review the presentation: [https://mentor.ieee.org/802-ec/documents?is\\_dcn=0023&is\\_year=2020](https://mentor.ieee.org/802-ec/documents?is_dcn=0023&is_year=2020)

## **REGISTRATION FEE:**

Registration for the IEEE 802 Plenary Session (with fee) is required, whether attending in-person or remotely.

# Schedule of Meetings and Attendance

**In Person Room Assignments:** Schedule QR codes posted outside each meeting room and on back of your badge. <http://schedule.802world.com/schedule/schedule/show>

**Virtual Participation details:** [https://ieee802.org/802tele\\_calendar.html](https://ieee802.org/802tele_calendar.html)

## ATTENDANCE TOOL (IMAT)

<https://imat.ieee.org/my-site/home>

## REGISTRATION FEE REQUIREMENT REMINDER

Payment of the session registration fee is required for all individuals who participate in any meetings associated with the July 2024 IEEE 802 Plenary Session.

**Registration Link:** <https://cvent.me/LV94ez>

# Le Centre Sheraton Montreal All Floors Meeting Space Map



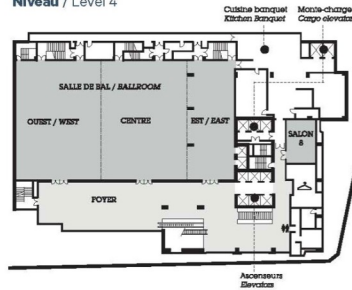
**Sheraton**  
LE CENTRE  
MONTREAL HOTEL

## Le Centre Sheraton Montréal Hôtel

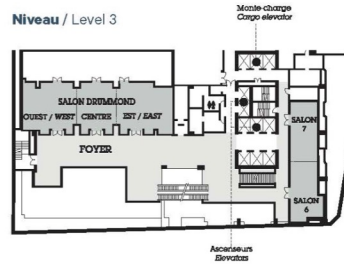
1201, boulevard René-Lévesque Ouest  
Montréal (Québec) H3B 2L7

Téléphone pour les groupes / Group desk : 514-878-4040  
Télécopieur pour les groupes / Group fax : 514-878-2305  
Courriel ventes / Sales e-mail : ventes.00463@sheraton.com  
sheraton.com/lecentre

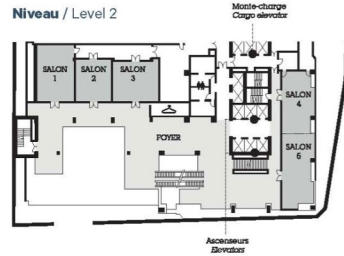
Niveau / Level 4



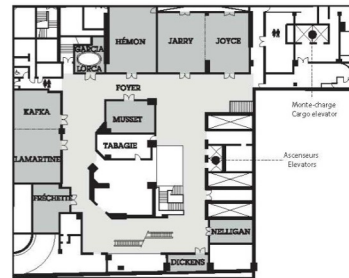
Niveau / Level 3



Niveau / Level 2



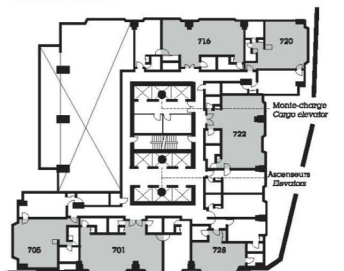
Niveau / Level A



Niveau / Level B



Niveau / Level 7



## Level 4

- Ballroom Est (East) - EC Opening/Closing
- Ballroom Centre - Lunch
- Ballroom Ouest (West) - 802.11 Plenaries and Large Sessions
- Ballroom Foyer - Breakfast, AM, PM Breaks
- Salon 8 - 802.11 Room #5

## Level 3

- Drummond Est (East) - 802.11 Room #3
- Drummond Ouest Centre (West Centre) - 802.11 Room #2
- Salon 7 - 802.11 Room #4

## Level 2

- Salon 1 - 802. Shared Room (.18/.19/.24)
- Salon 2 - 802.15
- Salon 3 - 802.1
- Salon 4 5 - 802.1, 802.15/.15 Joint, 802 Yangsters

## Level A

- Garcia Lorca - 802 EC/WG Chair Work Room
- Hemon - 802.15
- Jarry Joyce - 802.15
- Kafka - 802 EC Board Room
- Lamartine - 802.15
- Musset - 802.3, 802 ITU SC

## Level B

- Salon AB - 802.3
- Salon C - 802.3

Room Assignments are subject to change



# Food and Beverage Breaks

FOR REGISTERED ATTENDEES ONLY

## Light Breakfast

**Ballroom Foyer, Level 4**

Monday - Friday

7:15 AM - 8:30 AM

## Morning Coffee & Tea Break

**Ballroom Foyer, Level 4**

Monday - Thursday

9:50 AM - 10:35 AM

## Lunch

**Ballroom Centre, Level 4**

Monday - Thursday

12:00 PM - 1:30 PM

## Afternoon Break

**Ballroom Foyer, Level 4**

Monday - Thursday

3:15 PM - 4:00 PM

# IEEE 802 Social

Wednesday July 17th at 6:30 PM



**WHO:** Registered Attendee & Guests who purchased tickets.\*

\*Tickets were sold online until sold out (400 capacity) for \$24.99 each.

**WHAT:** Networking Reception, Food Court, Bar Service, Games

**WHERE:** TimeOut Market Montreal - 705 rue Sainte-Catherine Ouest

**DIRECTIONS:** The market is a modest distance (approximately 800 m) from the hotel and can be accessed by walking, public transport or private car service such as Uber or Lyft.

- Google directions may inform your travel choice.

<https://maps.app.goo.gl/WRGUaEzgaL7wxRZCA>

## **SOCIAL EVENT NAME BADGE**

All individuals attending the event (attendees and their guests) must wear a Social Event Name Badge. Badges must be picked up before 12:00 PM Wednesday July 17th.

Late requests may not be accommodated.

# Quick Start Guide to Local information in Montreal

## Weather Forecast

- [Montreal, Quebec Weather Forecast | AccuWeather](#)

## Time Zone - Eastern Time

- Time Zone Tool (What time is at home or where virtual attendees are logging in?)  
<https://www.timeanddate.com/worldclock/meeting.html>

## Montreal Airport - Guide and Flight Status

- [Airport Guide](#)
- [Arrival and Departure Flight Status](#)

## Getting the Bus Back to the Airport

- <https://www.admtl.com/en/access/transports/buses-747>

## Places to Eat

- [Time Out Montreal - Eatery Guide](#)

## Things to Do In Montreal, When You're Not in a Meeting

- [Some of the Best Things to Do In Montreal](#)

# Nearby Emergency & Health Services

## Emergency Services

Montréal Police Department:  
911

Fire: 911

Ambulance: 911

## Walk In Clinics

### Clinique Médicale Crescent

1198 Crescent St

Phone # +1 (514) 933-8383

### Clinique Medicale en Route

895 Rue De la Gauchetière O Suite 335

Phone # +1 (514) 954-1444

### RocklandMD - Downtown Montreal

1538 Sherbrooke St W #500

Phone # +1 (514) 667-3383

## Pharmacies

### Shoppers Drug Mart

1120 Saint-Catherine St W ·

Phone # +1 (514) 398-9759

### PJC Jean Coutu

980 Saint-Catherine St W

Phone # +1 (514) 866-7791

### Pharmaprix

1500 Saint-Catherine St W

Phone # +1 (514) 933-4744

## Hospitals

### CHUM - Centre hospitalier de l'Université de Montréal

1051 Rue Sanguinet, Montréal, QC H2X 3E4

+1 (514) 890-8000

### Montreal General Hospital

1650 Cedar Ave, Montreal, Quebec H3G 1A4

+1 (514) 934-1934

# General Shops & Services

## Market & Groceries

### Provigo

1275 Av. des Canadiens-de-Montréal  
#200, Montreal, Quebec

Sunday 08:00 - 21:00

Monday 07:00 - 21:00

Tuesday 07:00 - 21:00

Wednesday 07:00 - 21:00

Thursday 07:00 - 21:00

Friday 07:00 - 21:00

Saturday 08:00 - 21:00

Website: [PLM Lefebvre Montreal](#)  
[Canadien - Montréal, Québec | Provigo](#)

## Convenience Store

### Presse Gateway

Located Inside Le Centre  
Sheraton Montreal

### Dépanneur 4 Saisons

1439 Stanley St

## Shopping District

Nearby Shopping Street:  
Rue Sainte Catherine West

## Transportation

### Bus Station

- [Gare d'autocars de Montreal](#)

### Subway Stations

- [Peel Station - Green Line](#)
- [Bonaventure - Orange Line](#)
- [Metro Map](#)
- [Centre Ville Underground Map](#)

### Train Station

- [Gare Centreal - Central Station](#)
- [Lucien-L'allier](#)

# Thanks for helping us make this session a success, we look forward to working with you again!

The next IEEE 802 Plenary Session will be November 10-15, 2024. In-Person participation at the Hyatt Regency Vancouver in Vancouver British Columbia, Canada with remote participation available.

**We are preparing to make Hotel Reservations and Registration available in August 2024**

If you have any questions please email: [802info@facetoface-events.com](mailto:802info@facetoface-events.com)