

Figure 36-5—PCS transmit ordered_set state diagram

1
2
3
4
5
6
7
8
9
10
11
12
13
14
15
16
17
18
19
20
21
22
23
24
25
26
27
28
29
30
31
32
33
34
35
36
37
38
39
40
41
42
43
44
45
46
47
48
49
50
51
52
53
54
55

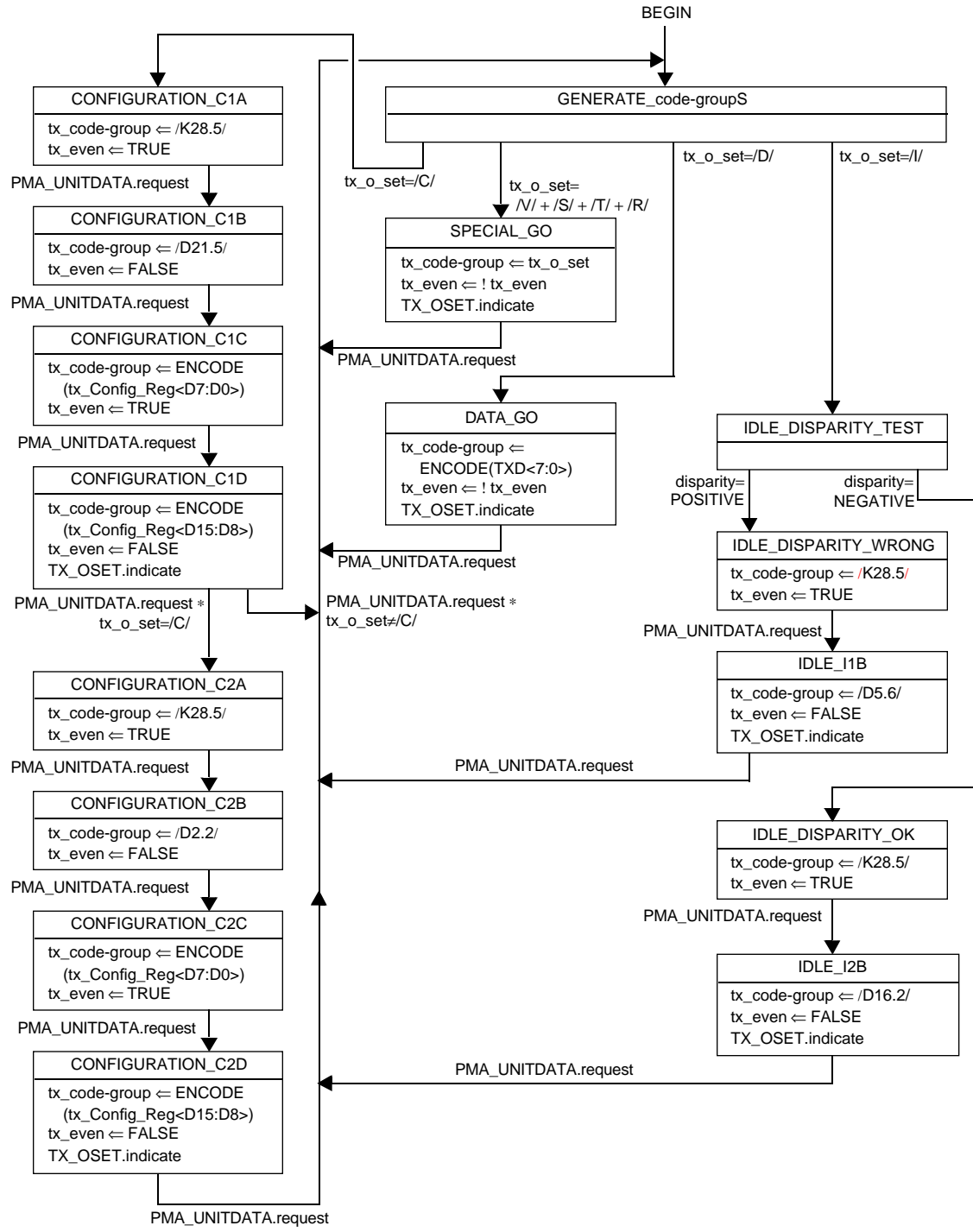


Figure 36-6—PCS transmit code-group state diagram

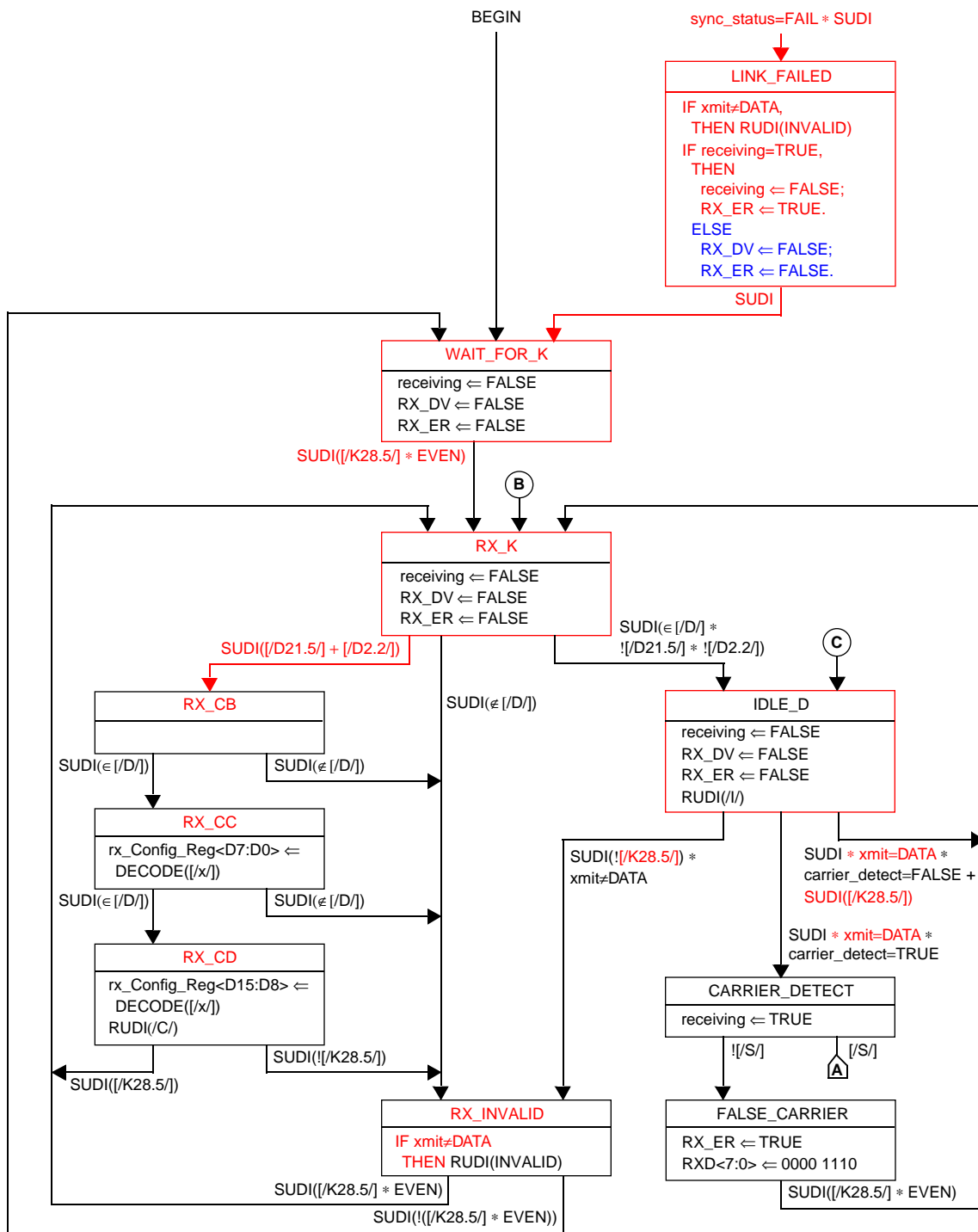


Figure 36-7a—PC3 receive state diagram, part a

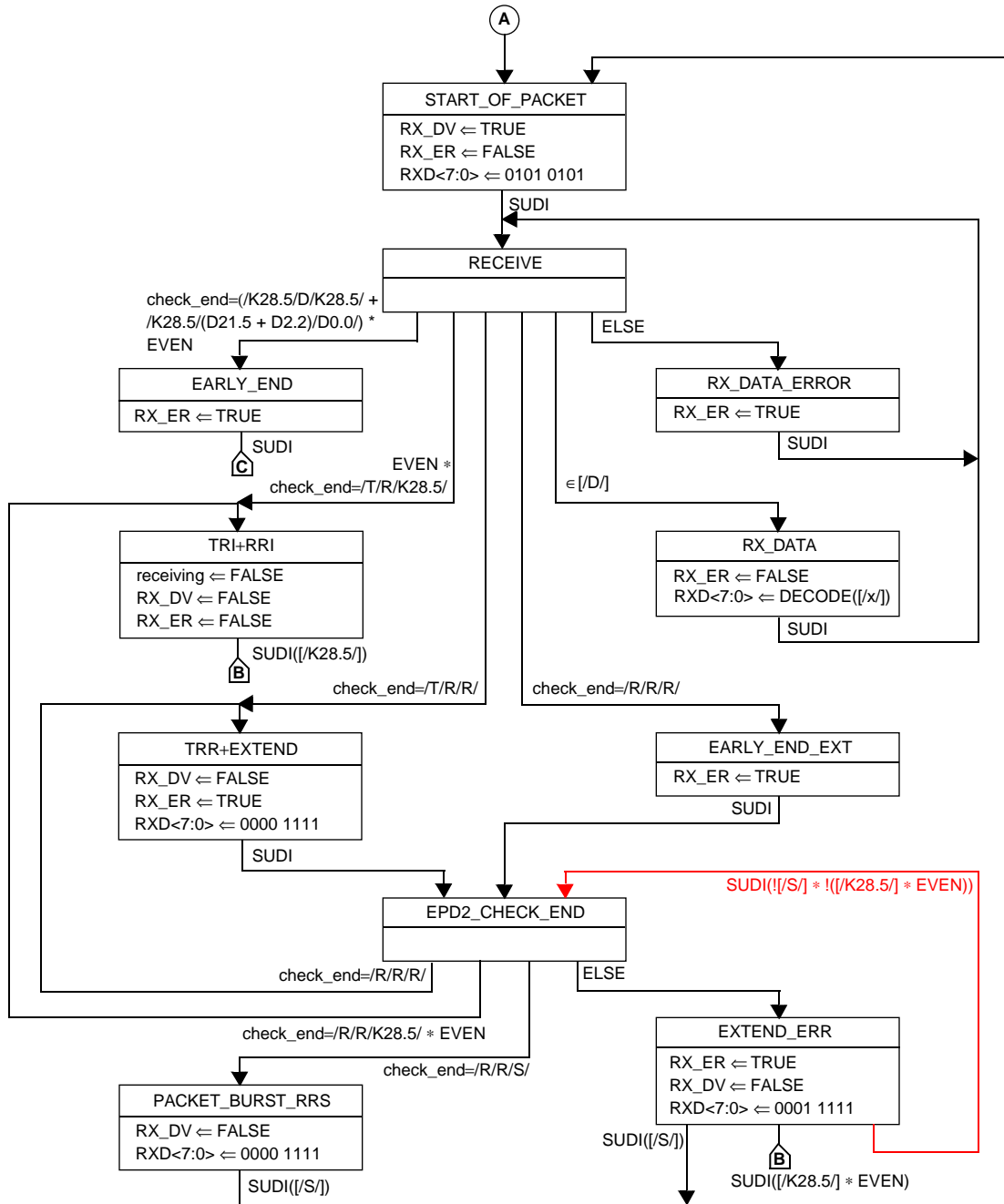


Figure 36-7b—PCS receive state diagram, part b

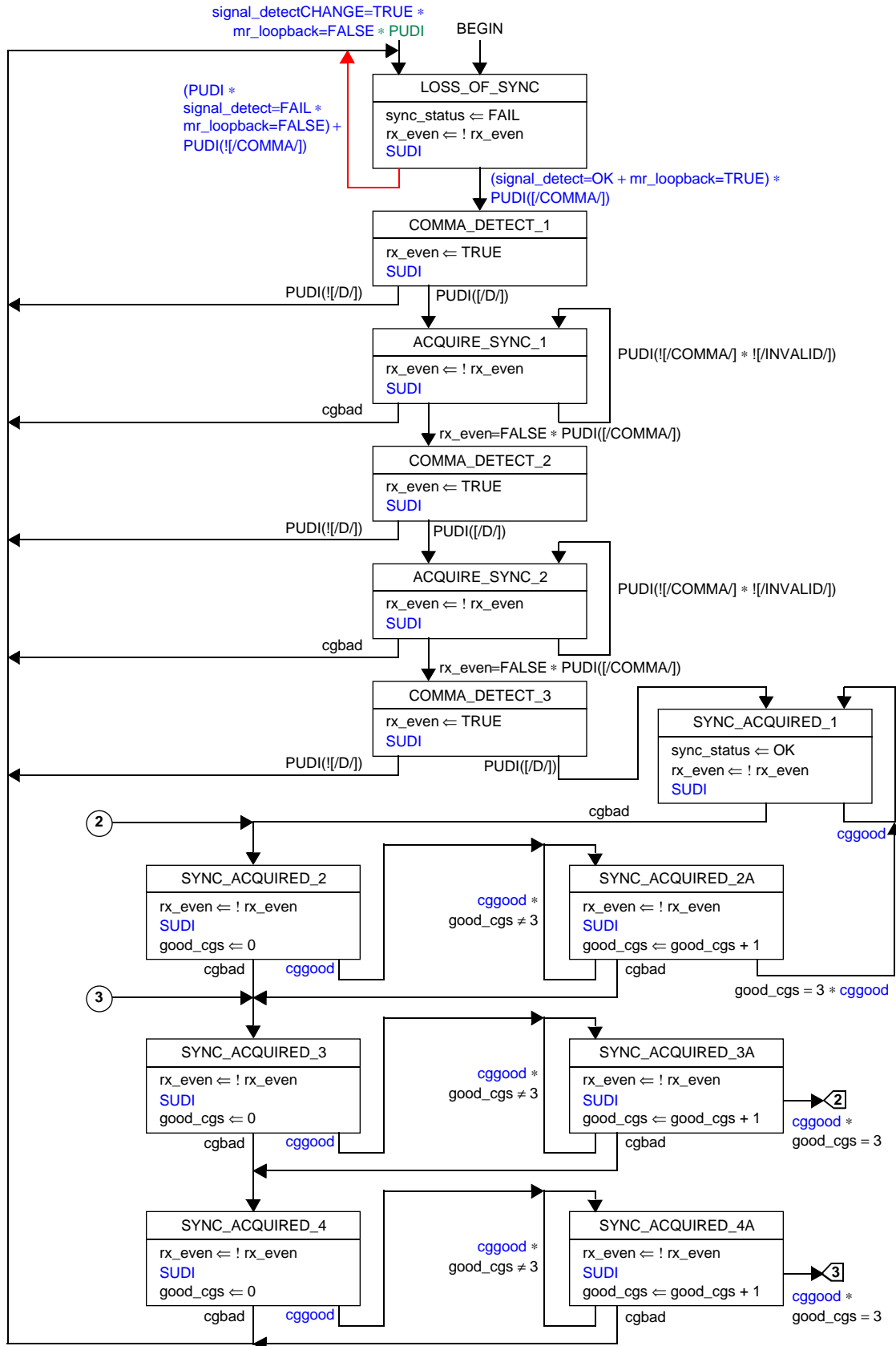
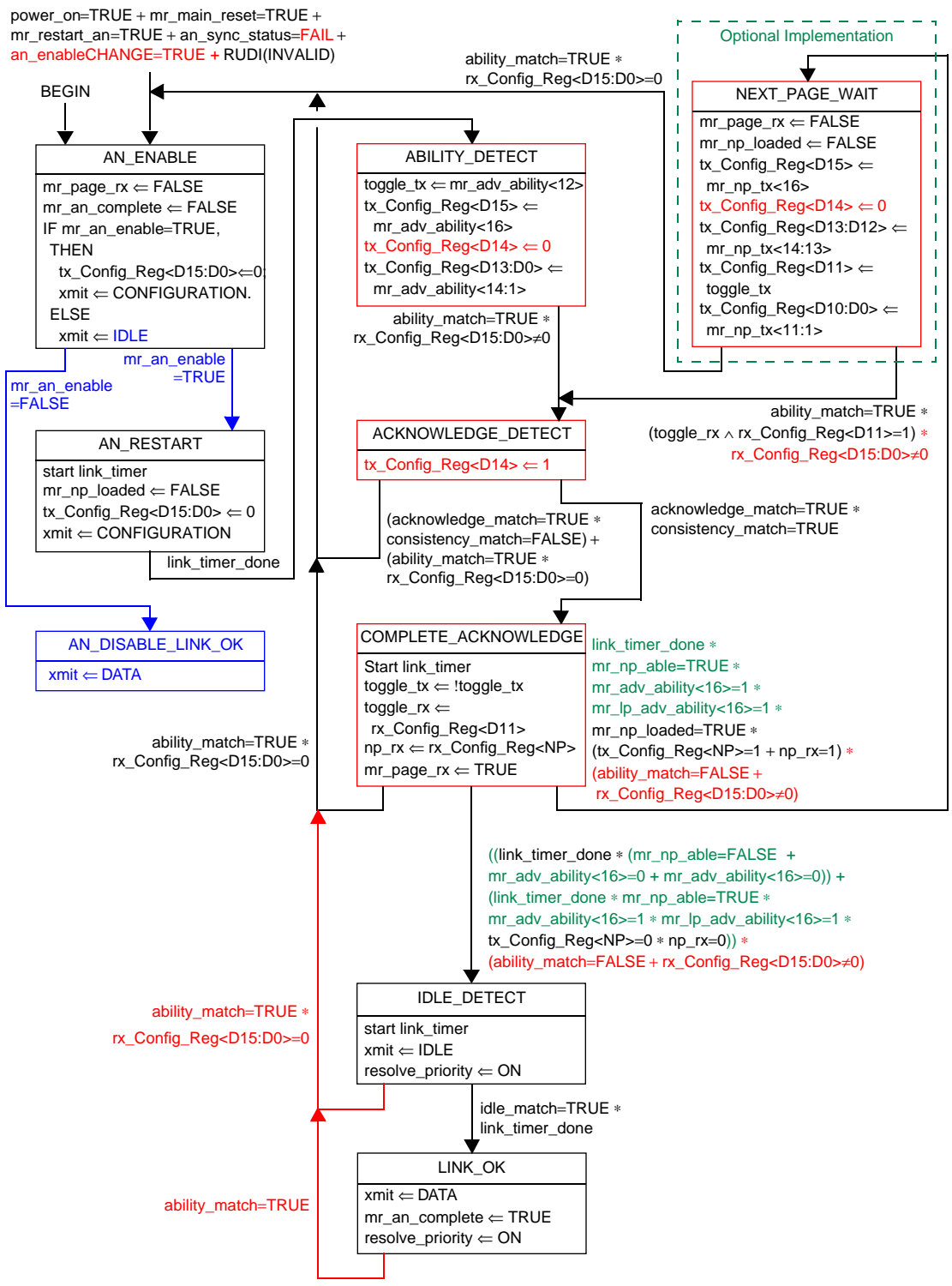


Figure 36-9—Synchronization state diagram

1
2
3
4
5
6
7
8
9
10
11
12
13
14
15
16
17
18
19
20
21
22
23
24
25
26
27
28
29
30
31
32
33
34
35
36
37
38
39
40
41
42
43
44
45
46
47
48
49
50
51
52
53
54
55



NOTE—If the optional Next Page function is not supported, the transition from COMPLETE ACKNOWLEDGE to IDLE_DETECT can be simplified to: link_timer_done * (ability_match=FALSE + rx_Config_Reg<D15:D0>≠0)

Figure 37-6— Auto-Negotiation state diagram