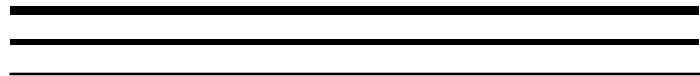
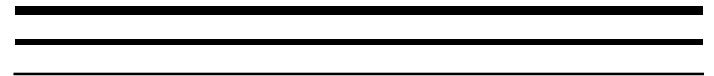


# In Search Of...

## Fragmentation



Denton Gentry  
Sun Microsystems



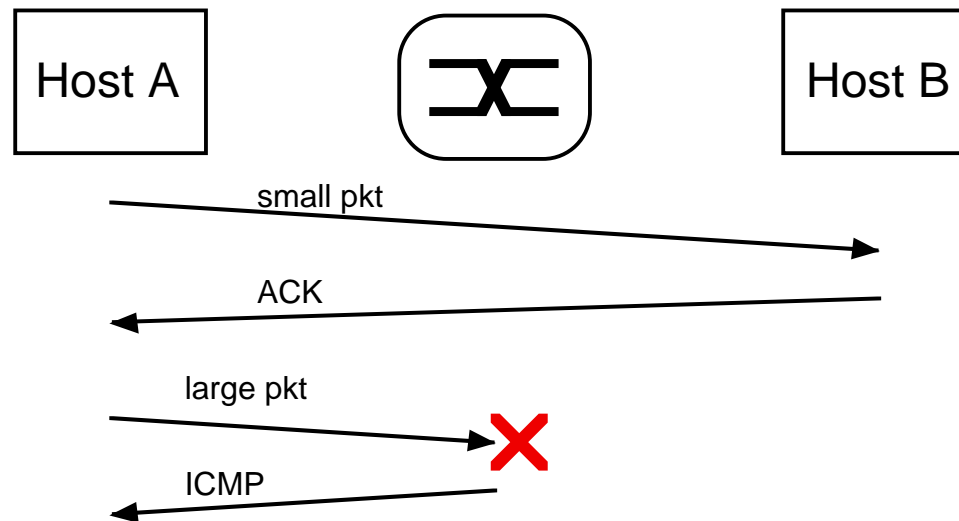
# Mechanism #1: TCP mss option

- TCP option sent in SYN & SYN+ACK
- Not a negotiation. Minimum mss wins.

source port		dest port	
sequence number			
acknowledgement number			
hlen	code bits		window
checksum		urgent	
mss			

# Mechanism #2: IP Path MTU Discovery

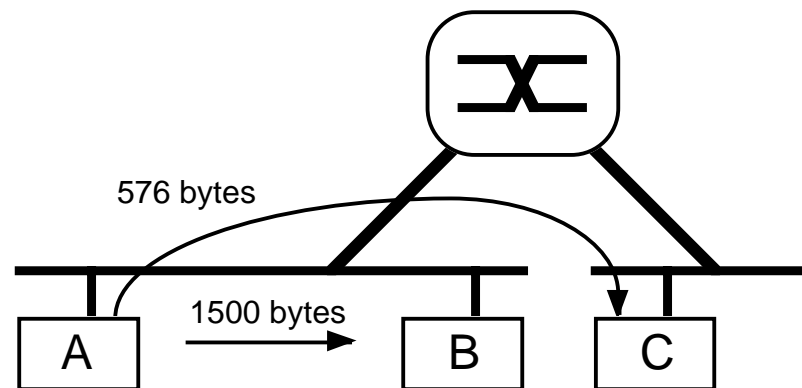
- mss only knows the leaf networks
- Solution: send large packets with DF
  - Expect ICMP error



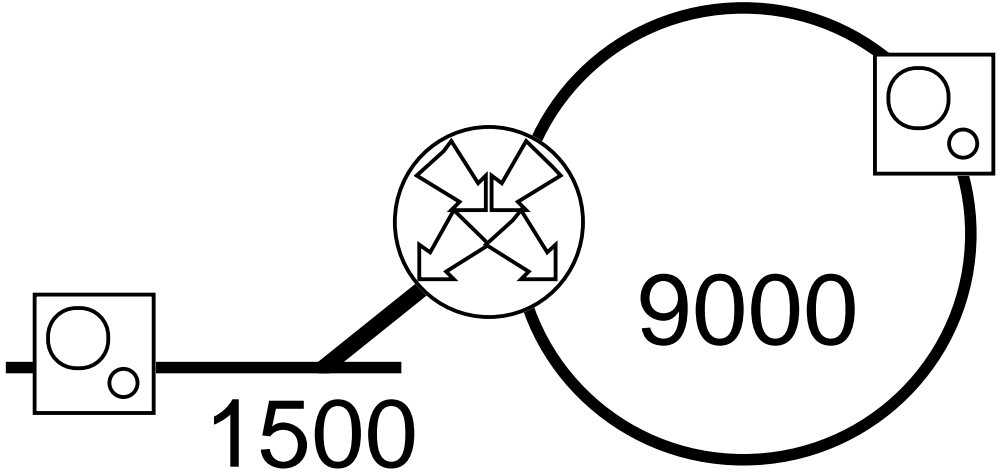
# Mechanism #3:

send small packets

- On subnet, use MTU size
- Off subnet, use 576 bytes

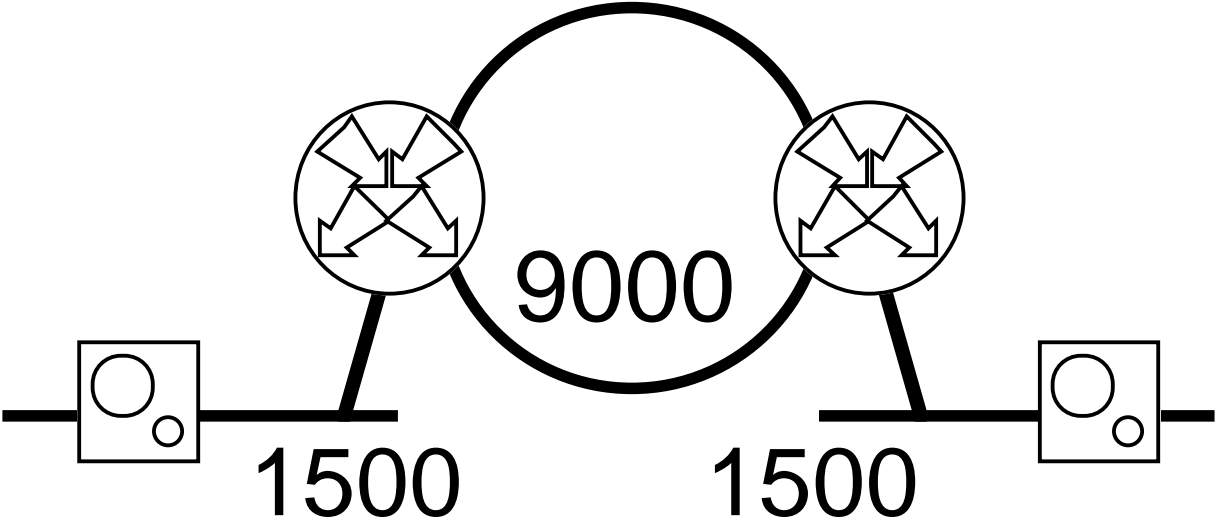


Ether->RPR, routed  
Handled: mss



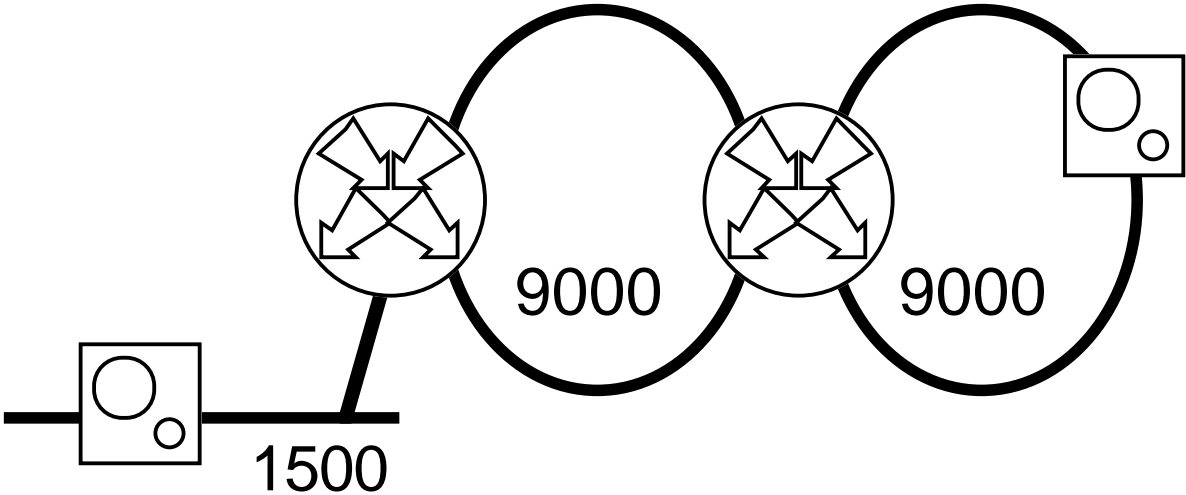
Ether->RPR->Ether, routed

Handled: mss

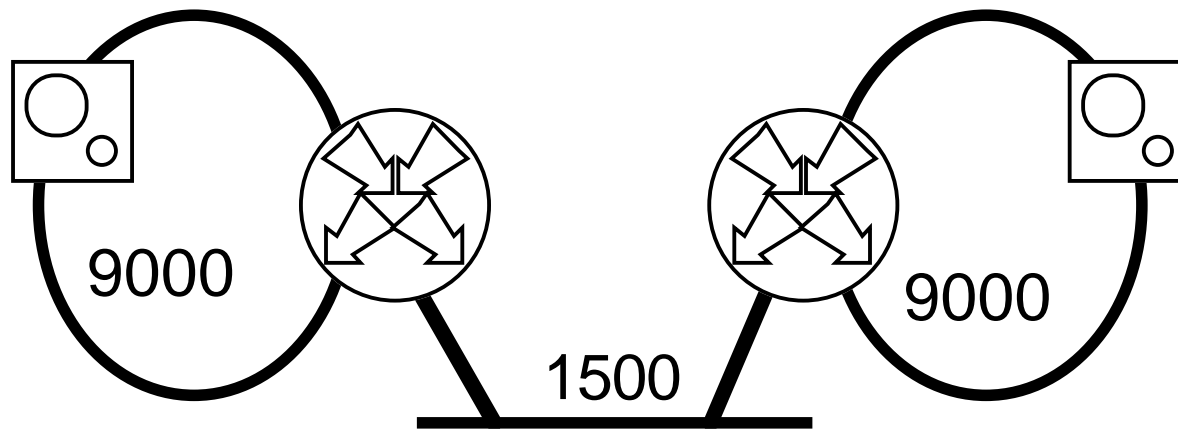


Ether->RPR->RPR, routed

Handled: mss



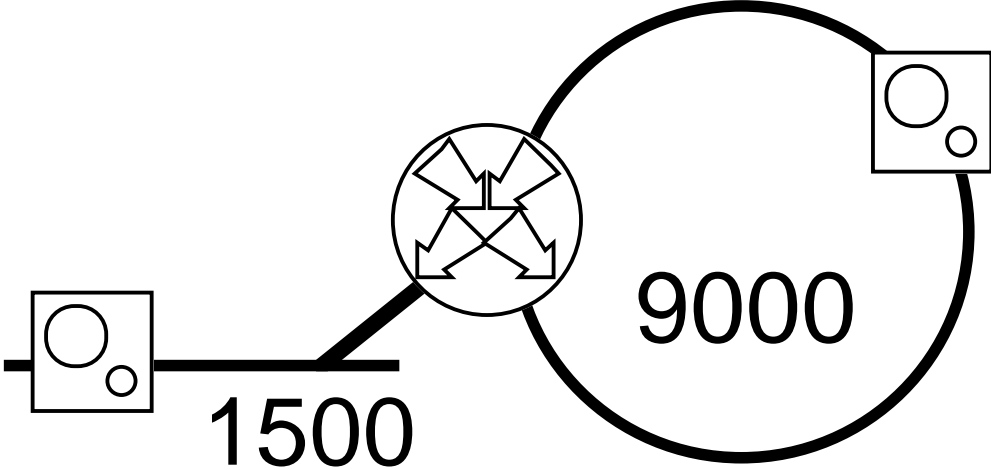
RPR->Ether->RPR, routed  
Handled: Path MTU Discovery





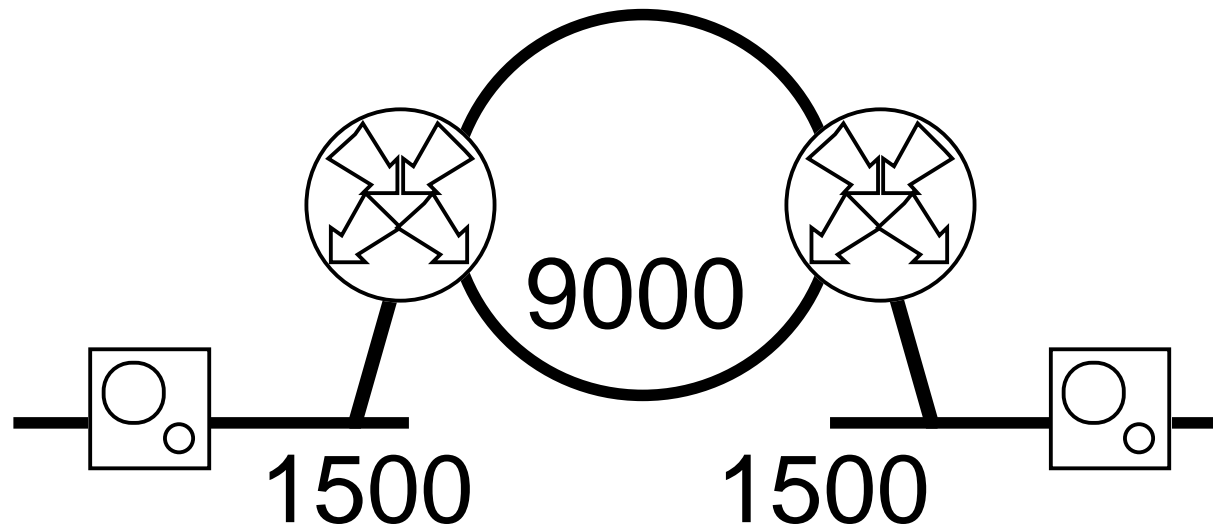
Ether->RPR, bridged

Handled: mss



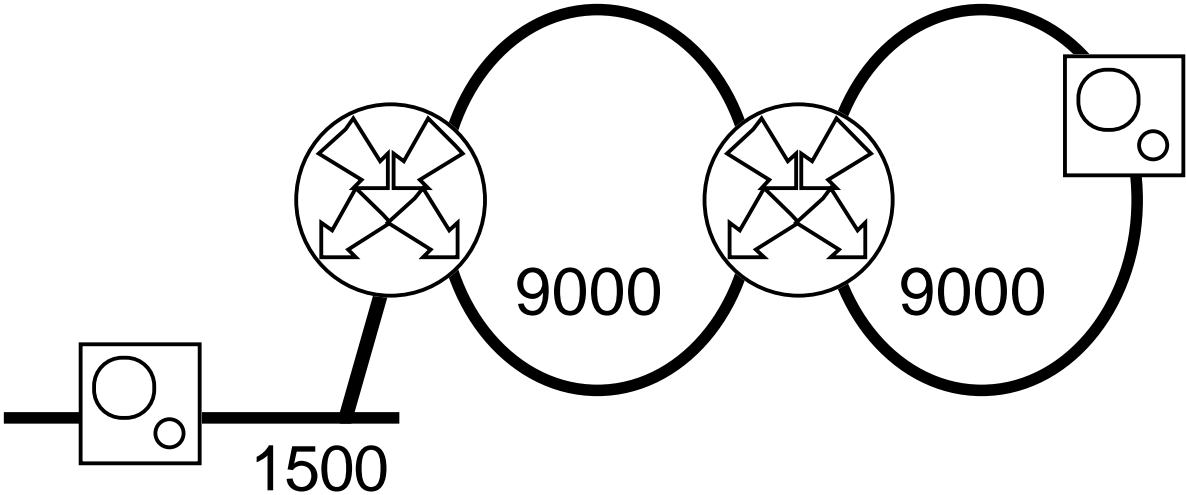
Ether->RPR->Ether, bridged

Handled: mss



Ether->RPR->RPR, bridged

Handled: mss



RPR->Ether->RPR, bridged  
Not handled.

