

**IEEE 802 LMSC Policy and Procedure Revision Ballot**  
**on**  
**Editorial Issues**

**From:** Matthew Sherman, LMSC Vice Chair

**To:** LMSC Executive Committee

**Date:** 1/1/2006

**Duration:** Till February 2, 2006

**Purpose:** Make editorial adjustments to P&P

**Rationale for proposed change:**

There are numerous editorial inconsistencies that have crept into the P&P. They include issues such as when to use acronyms such as WG for Working Group, and when to capitalize words such as 'Plenary Session'. Use of the term LMSC, vs IEEE802 is another example where the LMSC P&P is inconsistent. This change would enable editorial clean ups throughout the document that do not change the substantive meaning of the text.

Editorial instructions are highlighted in Pink.

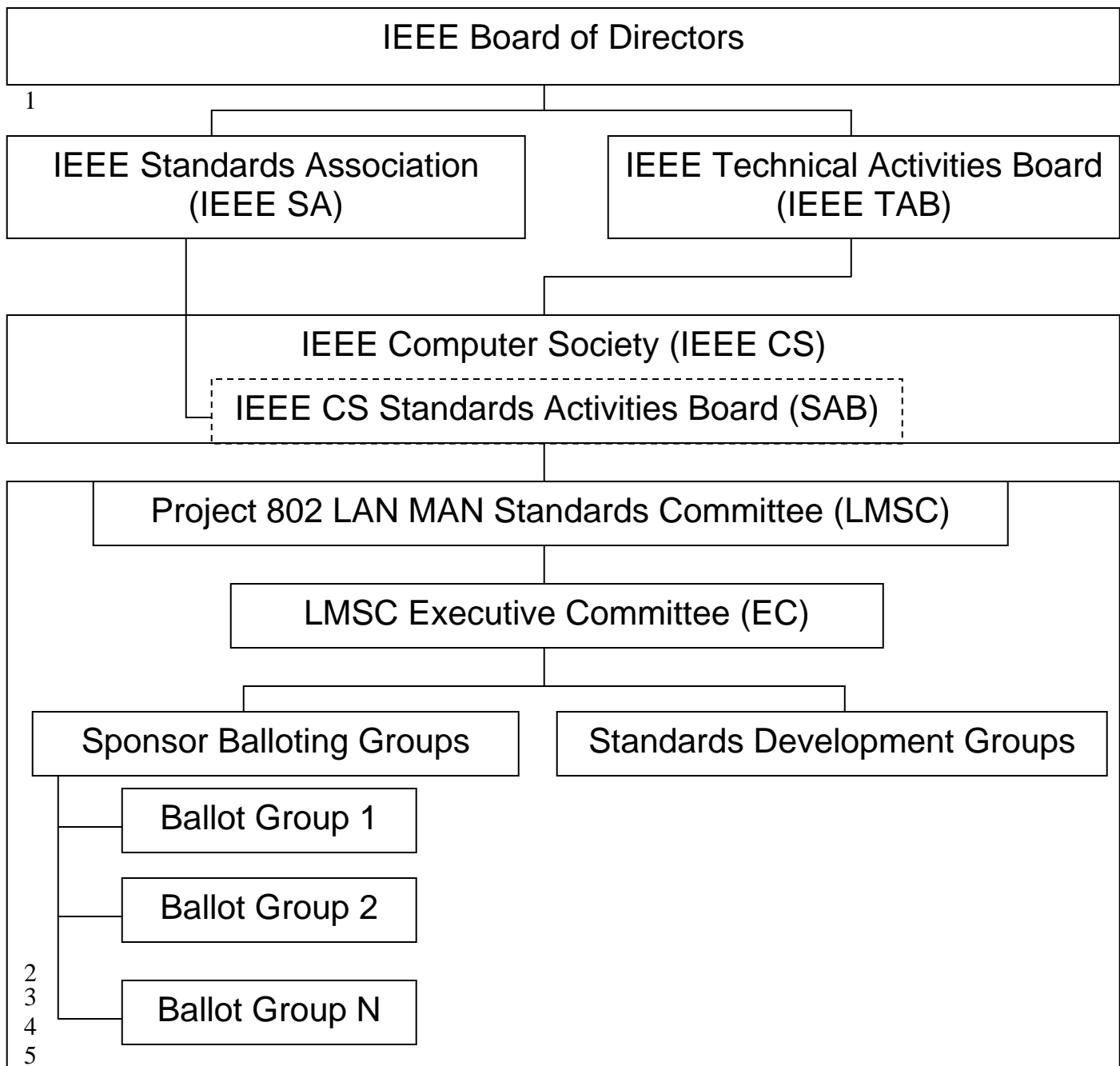
**Proposed Changes:**

Empty clauses are unmodified from the current P&P.

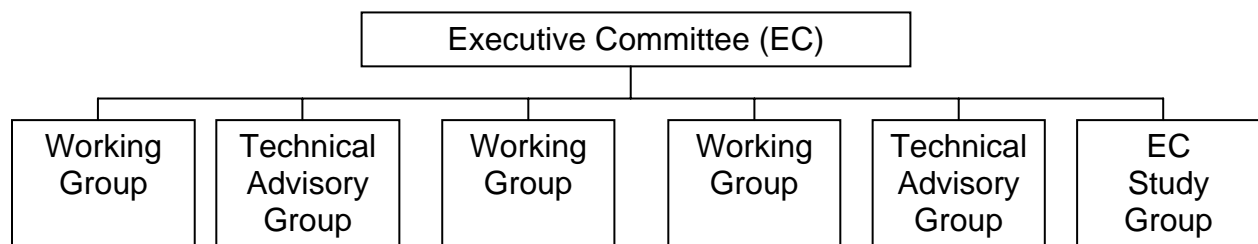
## **8. LMSC Organization**

The LAN/MAN Standards Committee (LMSC) has grown significantly from the original IEEE Project 802 that was its origin, but because of its roots and the family of standards it has developed; it is also widely known as "IEEE 802" ~~Standards~~. The terms "LMSC" and "LMSC Standards" will be used in these P&P.

LMSC operates as a sponsor within the IEEE Standards Association, and LMSC has reporting requirements to the Standards Activity Board (SAB) of the IEEE Computer Society (see Figure 1). LMSC is governed by an Executive Committee (EC) and LMSC procedures are designed to minimize overlap and conflict between standards and to promote commonality and compatibility among the family of LMSC standards. LMSC standards are developed within ~~a Working Group~~ WG or TAG ~~Technical Advisory Group~~ (see Figure 2).



**Figure 1 ~~IEEE PROJECT 802~~LMSC REPORTING RELATIONSHIPS**



**Figure 2 STANDARDS DEVELOPMENT GROUPS**